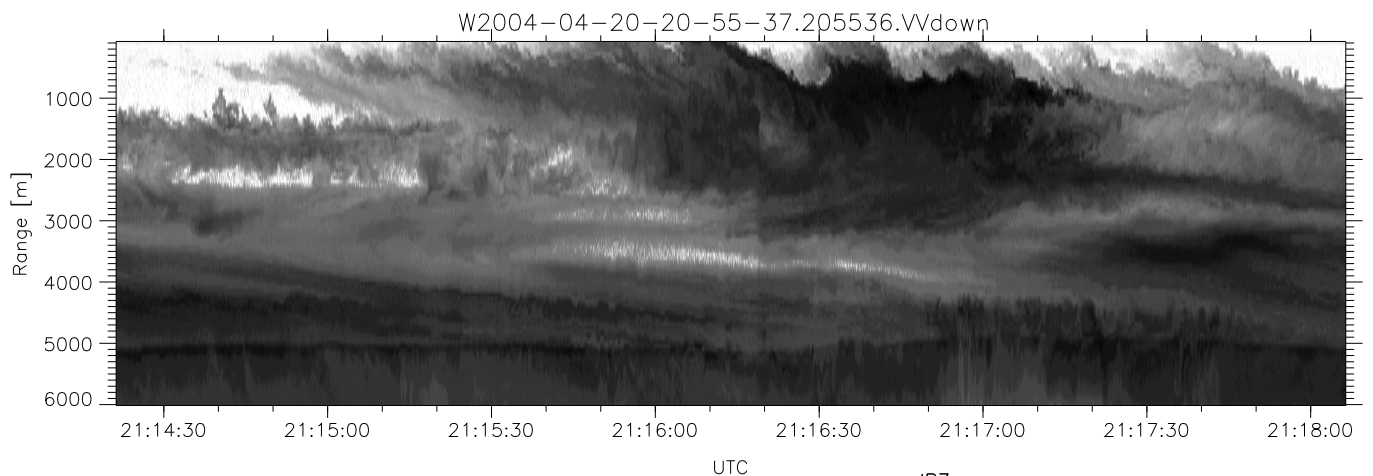
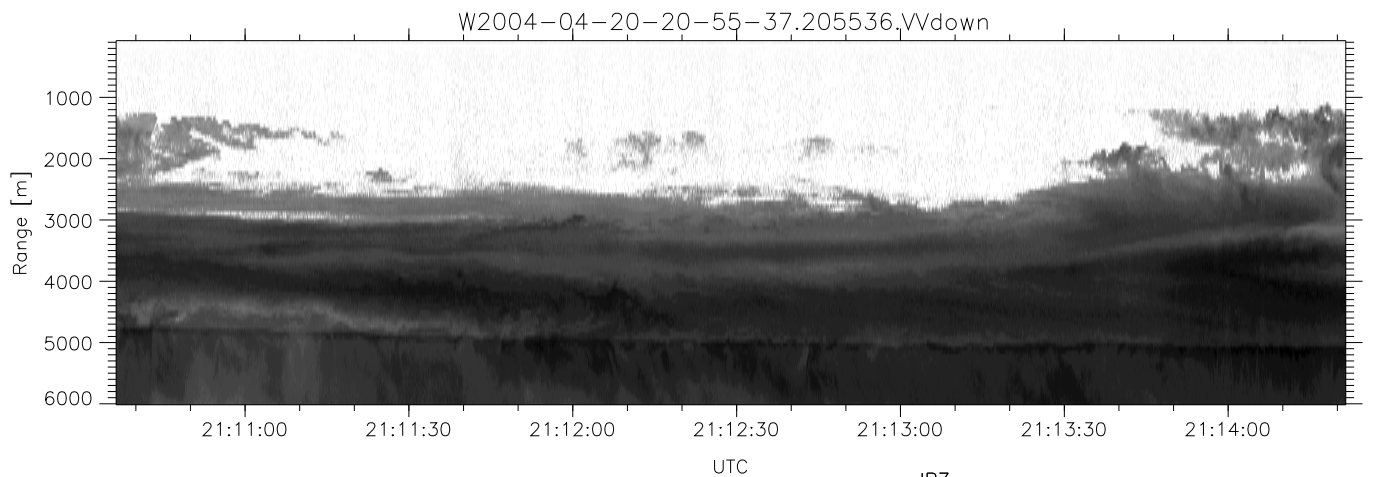
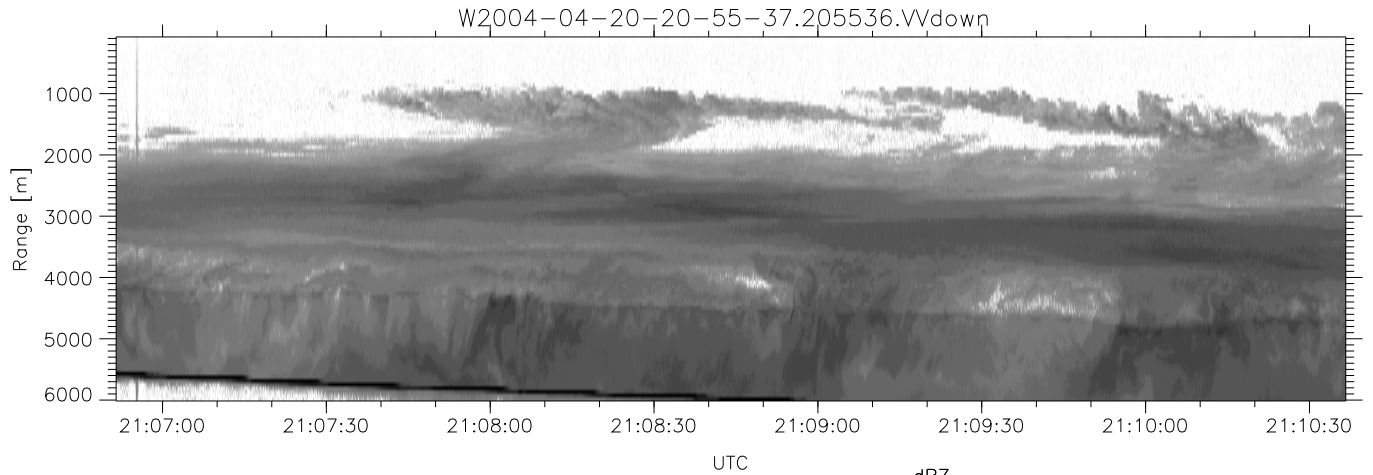


CIFEX 2004 Data (cal/250ns+2.5/100ns-3.5/500ns: 53.0,50.0)

W2004-04-20-20-55-37 - PPMAG4, IRIG:1/0/6
 UTC: 20:55:36.87 to 22:02:23.39, Dur: 4007s
 TimeLngth: 4006.59s, TimeInt: 28ms (35.4pps)
 TimeCor=-13.0s, PPS(min,max,med): 35,36,35
 Timeint/DSPdiff(mn,min,mx):28,28,42/28,28,42
 Prof: 513 to 142400, NumProf(r/t): 70285/141887
 ProcTime/Recs: 20:55:36-21:28:41/0-70284
 ADacqtime: 25ms; DRate: 198.2KB/s; Flags: 0, 0, 0
 Pulse: 275ns, IFfilt: 5.0MHz; ppPol: HH HV VV
 TxPol: HHVV, PRF: 20 10 20 10 kHz, Noiseflg:2,3
 Range: Delay 75m, Spacing 60m, Gates 100
 Ave. Pulses: 84, Rng/Prof Aspect@90m/s: 23.6

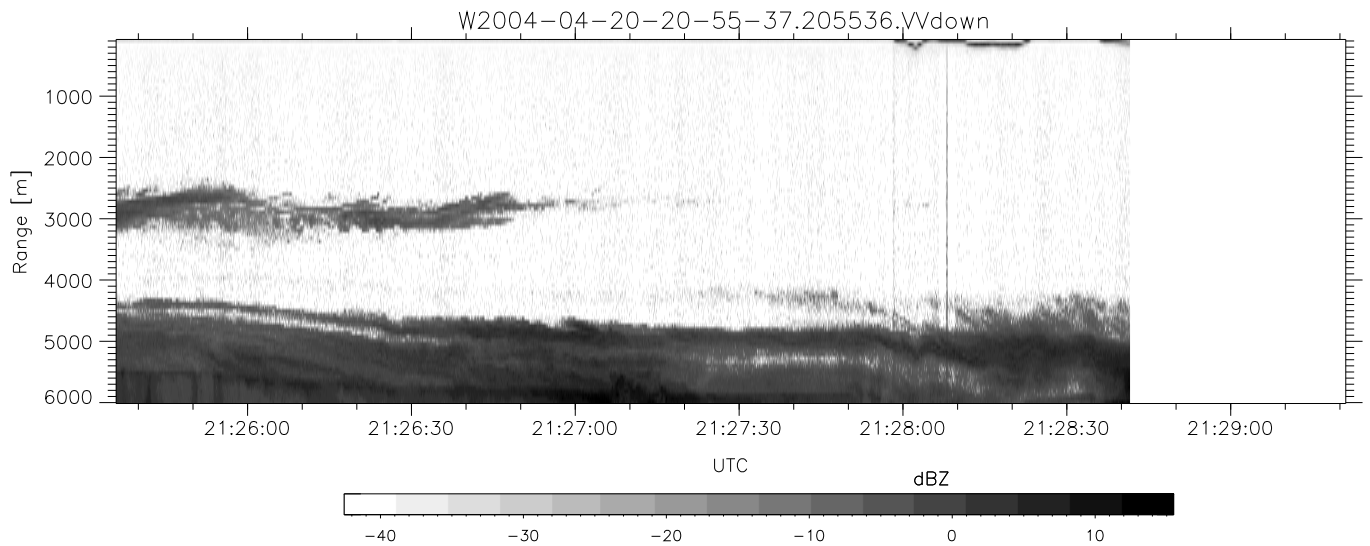
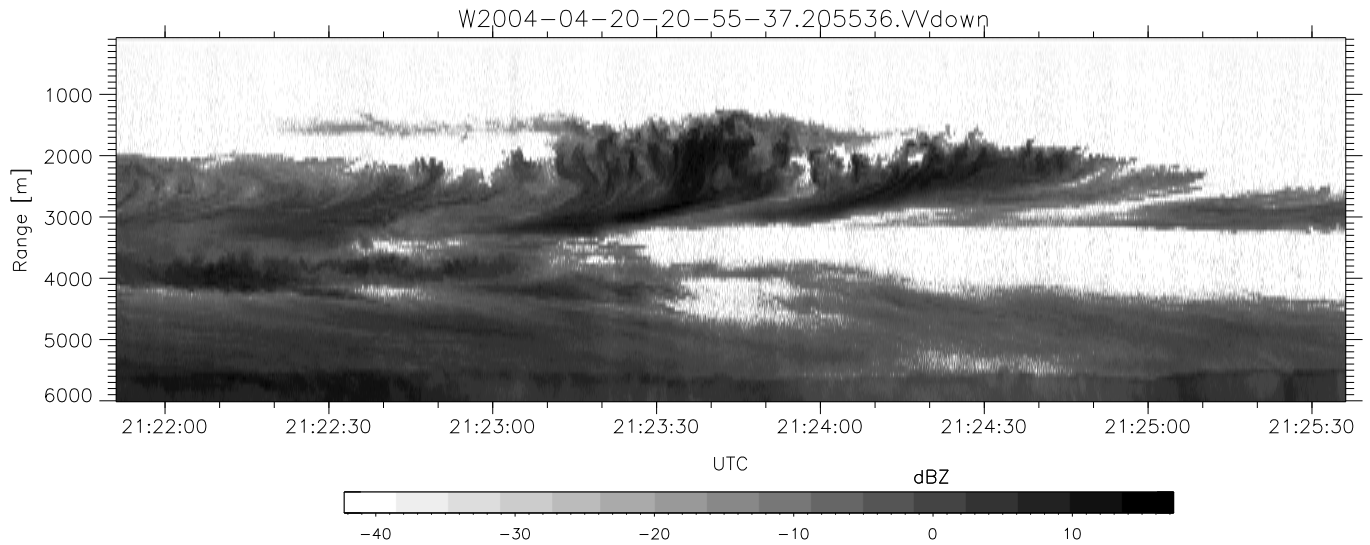
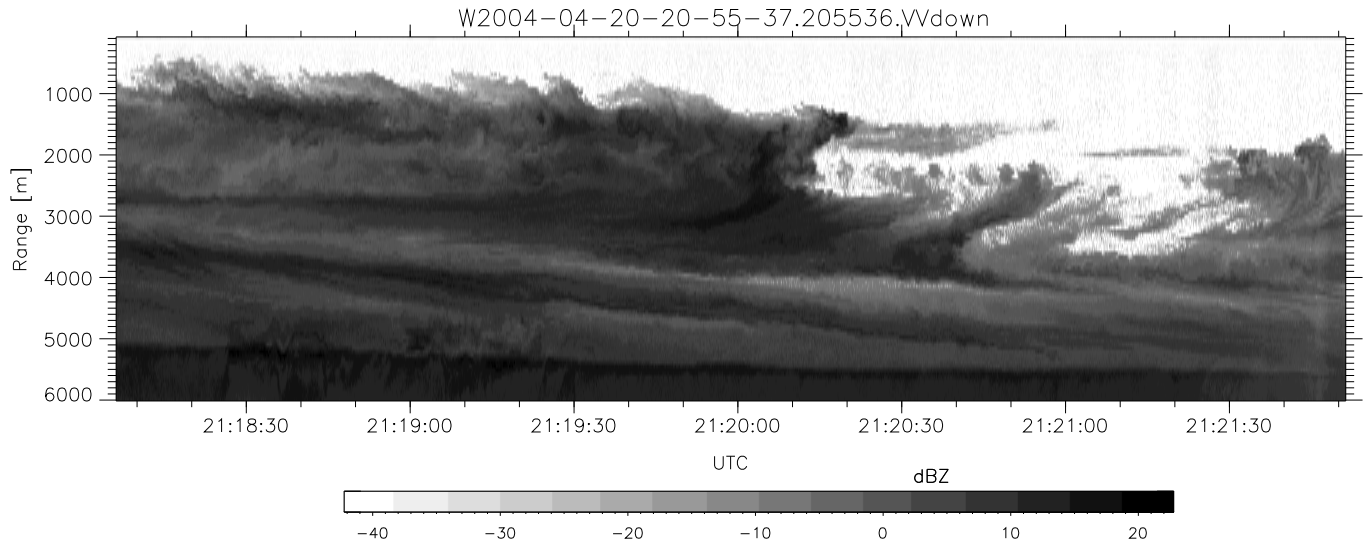
	Min	Max	Mean	Std	Varc%
hhN(dB)	-67.84	-64.10	-65.84	-75.81	10.1
vvN(dB)	-67.87	-63.67	-65.67	-75.51	10.4
hhL(dB)	-16.67	2.70	-2.87	-3.95	77.9
vvL(dB)	-15.52	5.33	-4.66	-6.67	62.9
ppN(m/s)	-12.52	12.79	-0.05	4.15	
ppT(m/s)	-98.90	101.01	-0.41	32.75	
hh/vv(dB)	-28.98	19.01	-4.26	0.99	335.
vh/hh(dB)	NaN	-28.55	-40.59	-38.57	159.
hv/vv(dB)	NaN	-33.54	-47.91	-43.33	286.
hnjmp(dB)			0.16		
vnjmp(dB)			0.16		



CIFEX 2004 Data (cal/250ns+2.5/100ns-3.5/500ns: 53.0,50.0)

W2004-04-20-20-55-37 - PPMAG4, IRIG:1/0/6
 UTC: 20:55:36.87 to 22:02:23.39, Dur: 4007s
 TimeLngth: 4006.59s, TimeInt: 28ms (35.4pps)
 TimeCor=-13.0s, PPS(min,max,med): 35,36,35
 Timeint/DSPdiff(mn,min,mx):28,28,42/28,28,42
 Prof: 513 to 142400, NumProf(r/t): 70285/141887
 ProcTime/Recs: 20:55:36-21:28:41/0-70284
 ADacqtime: 25ms; DRate: 198.2KB/s; Flags: 0, 0, 0
 Pulse: 275ns, IFfilt: 5.0MHz; ppPol: HH HV VV
 TxPol: HHVV, PRF: 20 10 20 10 kHz, Noiseflg:2,3
 Range: Delay 75m, Spacing 60m, Gates 100
 Ave. Pulses: 84, Rng/Prof Aspect@90m/s: 23.6

	Min	Max	Mean	Std	Varc%
hhN (dB)	-67.84	-64.10	-65.84	-75.81	10.1
vvN (dB)	-67.87	-63.67	-65.67	-75.51	10.4
hhL (dB)	-16.67	2.70	-2.87	-3.95	77.9
vvL (dB)	-15.52	5.33	-4.66	-6.67	62.9
ppN (m/s)	-12.52	12.79	-0.05	4.15	
ppT (m/s)	-98.90	101.01	-0.41	32.75	
hh/vv (dB)	-28.98	19.01	-4.26	0.99	335.
vh/hh (dB)	NaN	-28.55	-40.59	-38.57	159.
hv/vv (dB)	NaN	-33.54	-47.91	-43.33	286.
hn_jmp (dB)				0.16	
vn_jmp (dB)				0.16	



CIFEX 2004 Data (cal/250ns+2.5/100ns-3.5/500ns: 53.0,50.0)

W2004-04-20-20-55-37 - PPMAG4, IRIG:1/0/6
 UTC: 20:55:36.87 to 22:02:23.39, Dur: 4007s
 TimeLngth: 4006.59s, TimeInt: 28ms (35.4pps)
 TimeCor=-13.0s, PPS(min,max,med): 35,36,35
 Timeint/DSPdiff(mn,min,mx):28,28,42/28,28,42
 Prof: 513 to 142400, NumProf(r/t): 70285/141887
 ProcTime/Recs: 20:55:36-21:28:41/0-70284
 ADacqtime: 25ms; DRate: 198.2KB/s; Flags: 0, 0, 0
 Pulse: 275ns, IFfilt: 5.0MHz; ppPol: HH HV VV
 TxPol: HHVV, PRF: 20 10 20 10 kHz, Noiseflg:2,3
 Range: Delay 75m, Spacing 60m, Gates 100
 Ave. Pulses: 84, Rng/Prof Aspect@90m/s: 23.6

	Min	Max	Mean	Std	Varc%
hhN (dB)	-67.84	-64.10	-65.84	-75.81	10.1
vvN (dB)	-67.87	-63.67	-65.67	-75.51	10.4
hhL (dB)	-16.67	2.70	-2.87	-3.95	77.9
vvL (dB)	-15.52	5.33	-4.66	-6.67	62.9
ppN (m/s)	-12.52	12.79	-0.05	4.15	
ppT (m/s)	-98.90	101.01	-0.41	32.75	
hh/vv (dB)	-28.98	19.01	-4.26	0.99	335.
vh/hh (dB)	NaN	-28.55	-40.59	-38.57	159.
hv/vv (dB)	NaN	-33.54	-47.91	-43.33	286.
hn_jmp (dB)			0.16		
vn_jmp (dB)			0.16		