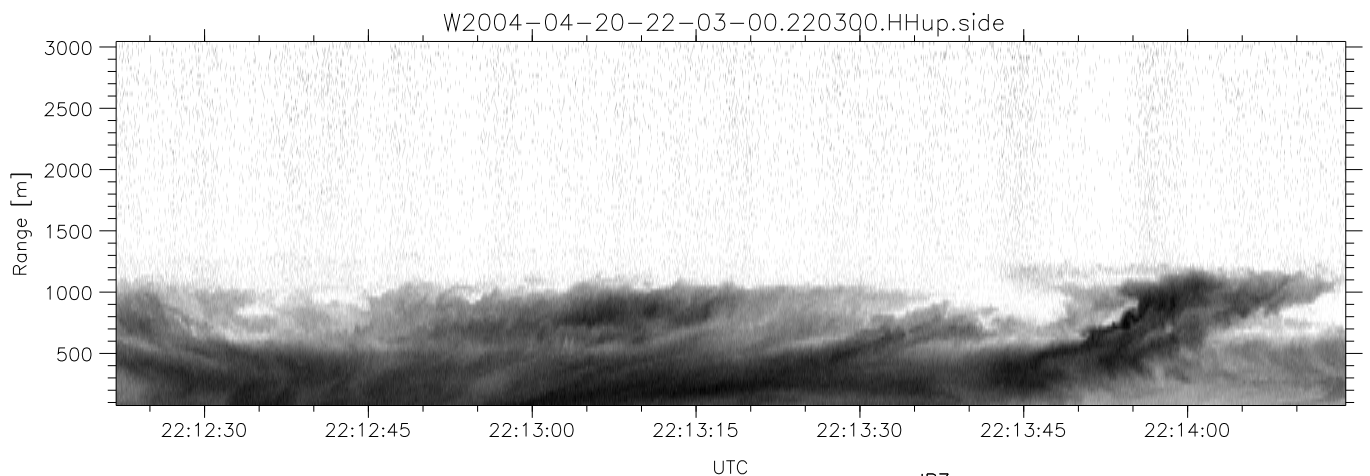
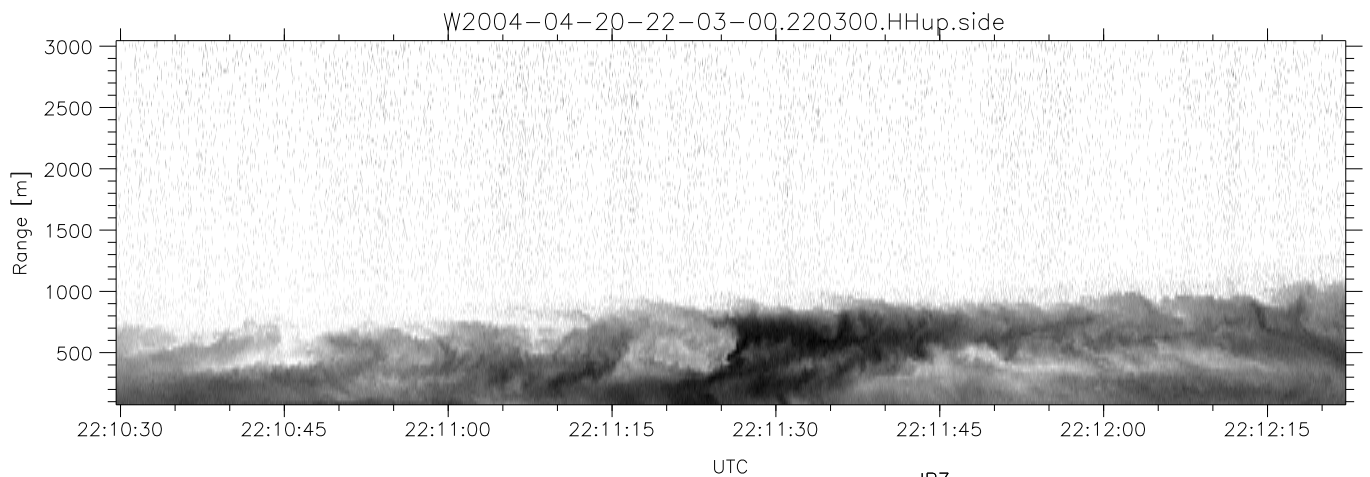
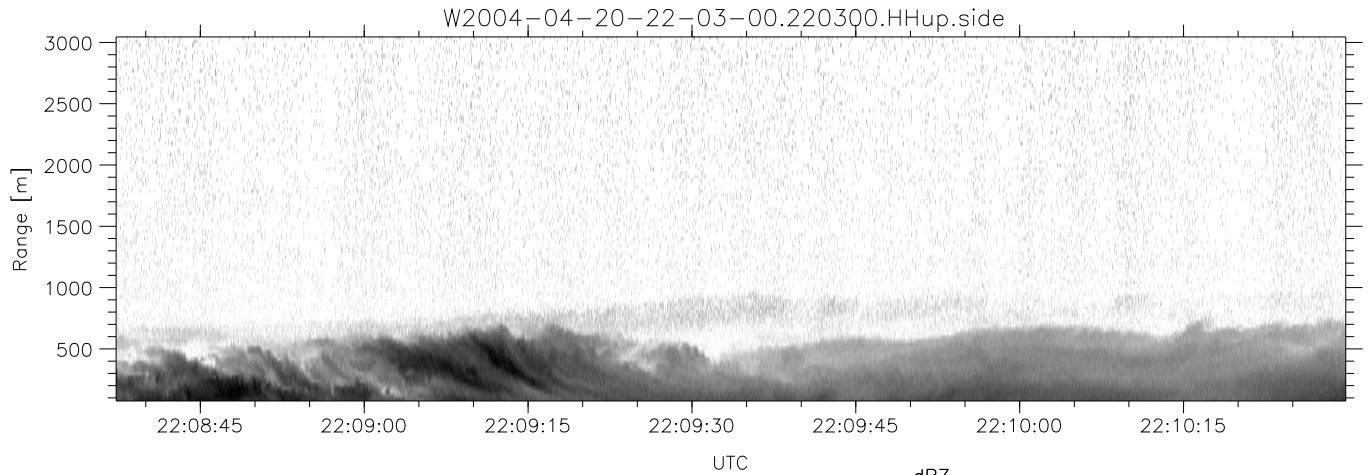


CIFEX 2004 Data (cal/250ns+2.5/100ns-3.5/500ns: 53.0,50.0)

W2004-04-20-22-03-00 - PPMAG4, IRIG:1/0/6
 UTC: 22:03:00.40 to 22:29:23.97, Dur: 1583s
 TimeLngth: 1583.57s, TimeInt: 28ms (35.4pps)
 TimeCor=-13.0s, PPS(min,max,med): 35,36,35
 Timeint/DSPdiff(mn,min,mx):28,28,36/28,28,28
 Prof: 532 to 56652, NumProf(r/t): 35142/56120
 ProcTime/Recs: 22:03:00-22:19:32/0-35141
 ADacqtime: 25ms; DRate: 198.4KB/s; Flags: 0, 0, 0
 Pulse: 275ns, IFilt: 5.0MHz; ppPol: HH HV VV
 TxPol: HHVV, PRF: 20 10 20 10 kHz, NoiseFlg:4,2
 Range: Delay 75m, Spacing 30m, Gates 100
 Ave. Pulses: 84, Rng/Prof Aspect@90m/s: 11.8

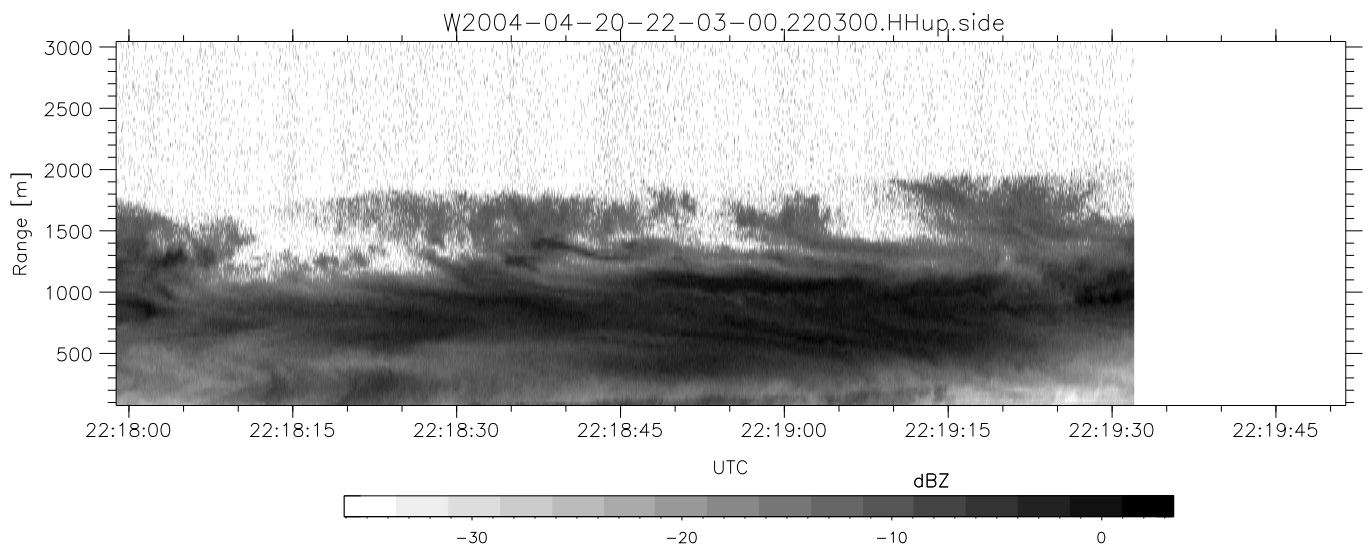
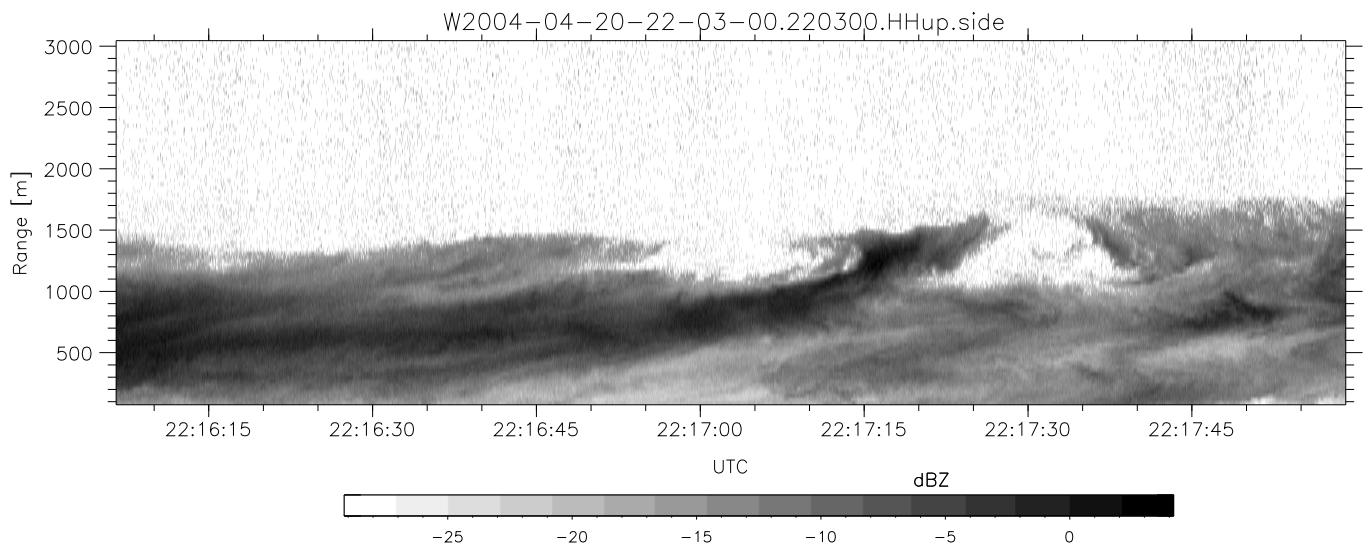
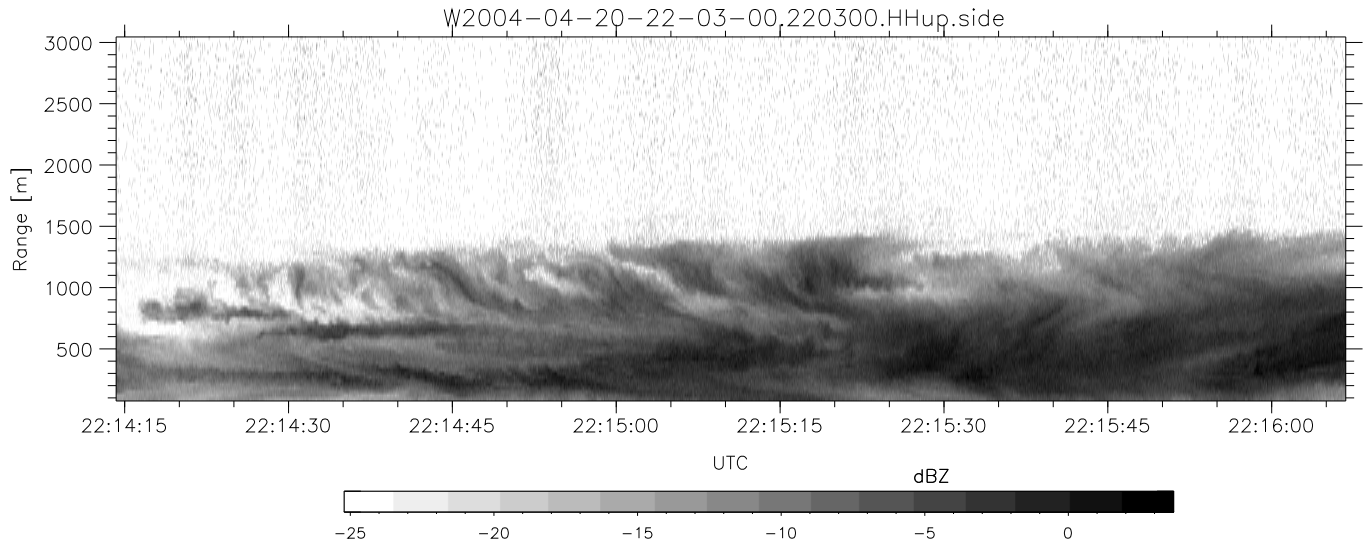
	Min	Max	Mean	Std	Varc%
hhN (dB)	-67.88	-63.84	-65.59	-75.64	9.9
vvN (dB)	-67.48	-63.95	-65.61	-75.62	10.0
hhL (dB)	-17.97	3.62	0.25	-2.03	59.2
vvL (dB)	-9.82	6.00	2.64	0.75	64.7
ppN (m/s)	-12.43	12.30	-0.04	4.13	
ppT (m/s)	-98.20	97.19	-0.31	32.66	
hh/vv (dB)	NaN	77.50	25.14	49.96	3027
vh/hh (dB)	NaN	-28.03	-37.19	-36.22	124.
hv/vv (dB)	NaN	-33.31	-50.08	-43.03	507.
hnjmp (dB)			-0.13		
vnjmp (dB)			-0.14		



CIFEX 2004 Data (cal/250ns+2.5/100ns-3.5/500ns: 53.0,50.0)

W2004-04-20-22-03-00 - PPMAG4, IRIG:1/0/6
 UTC: 22:03:00.40 to 22:29:23.97, Dur: 1583s
 TimeLngth: 1583.57s, TimeInt: 28ms (35.4pps)
 TimeCor=-13.0s, PPS(min,max,med): 35,36,35
 Timeint/DSPdiff(mn,min,mx):28,28,36/28,28,28
 Prof: 532 to 56652, NumProf(r/t): 35142/56120
 ProcTime/Recs: 22:03:00-22:19:32/0-35141
 ADacqtime: 25ms; DRate: 198.4KB/s; Flags: 0, 0, 0
 Pulse: 275ns, IFfilt: 5.0MHz; ppPol: HH HV VV
 TxPol: HHVV, PRF: 20 10 20 10 kHz, NoiseFlg:4,2
 Range: Delay 75m, Spacing 30m, Gates 100
 Ave. Pulses: 84, Rng/Prof Aspect@90m/s: 11.8

	Min	Max	Mean	Std	Varc%
hhN(dB)	-67.88	-63.84	-65.59	-75.64	9.9
vvN(dB)	-67.48	-63.95	-65.61	-75.62	10.0
hhL(dB)	-17.97	3.62	0.25	-2.03	59.2
vvL(dB)	-9.82	6.00	2.64	0.75	64.7
ppN(m/s)	-12.43	12.30	-0.04	4.13	
ppT(m/s)	-98.20	97.19	-0.31	32.66	
hh/vv(dB)	NaN	77.50	25.14	49.96	3027
vh/hh(dB)	NaN	-28.03	-37.19	-36.22	124.
hv/vv(dB)	NaN	-33.31	-50.08	-43.03	507.
hn_jmp(dB)			-0.13		
vn_jmp(dB)			-0.14		



CIFEX 2004 Data (cal/250ns+2.5/100ns-3.5/500ns: 53.0,50.0)

W2004-04-20-22-03-00 - PPMAG4, IRIG:1/0/6
 UTC: 22:03:00.40 to 22:29:23.97, Dur: 1583s
 TimeLngth: 1583.57s, TimeInt: 28ms (35.4pps)
 TimeCor=-13.0s, PPS(min,max,med): 35,36,35
 Timeint/DSPdiff(mn,min,mx):28,28,36/28,28,28
 Prof: 532 to 56652, NumProf(r/t): 35142/56120
 ProcTime/Recs: 22:03:00-22:19:32/0-35141
 ADacqtime: 25ms; DRate: 198.4KB/s; Flags: 0, 0, 0
 Pulse: 275ns, IFilt: 5.0MHz; ppPol: HH HV VV
 TxPol: HHVV, PRF: 20 10 20 10 kHz, Noiseflg:4,2
 Range: Delay 75m, Spacing 30m, Gates 100
 Ave. Pulses: 84, Rng/Prof Aspect@90m/s: 11.8

	Min	Max	Mean	Std	Varc%
hhN (dB)	-67.88	-63.84	-65.59	-75.64	9.9
vvN (dB)	-67.48	-63.95	-65.61	-75.62	10.0
hhL (dB)	-17.97	3.62	0.25	-2.03	59.2
vvL (dB)	-9.82	6.00	2.64	0.75	64.7
ppN (m/s)	-12.43	12.30	-0.04	4.13	
ppT (m/s)	-98.20	97.19	-0.31	32.66	
hh/vv (dB)	NaN	77.50	25.14	49.96	3027
vh/hh (dB)	NaN	-28.03	-37.19	-36.22	124.
hv/vv (dB)	NaN	-33.31	-50.08	-43.03	507.
hn_jmp (dB)			-0.13		
vn_jmp (dB)			-0.14		