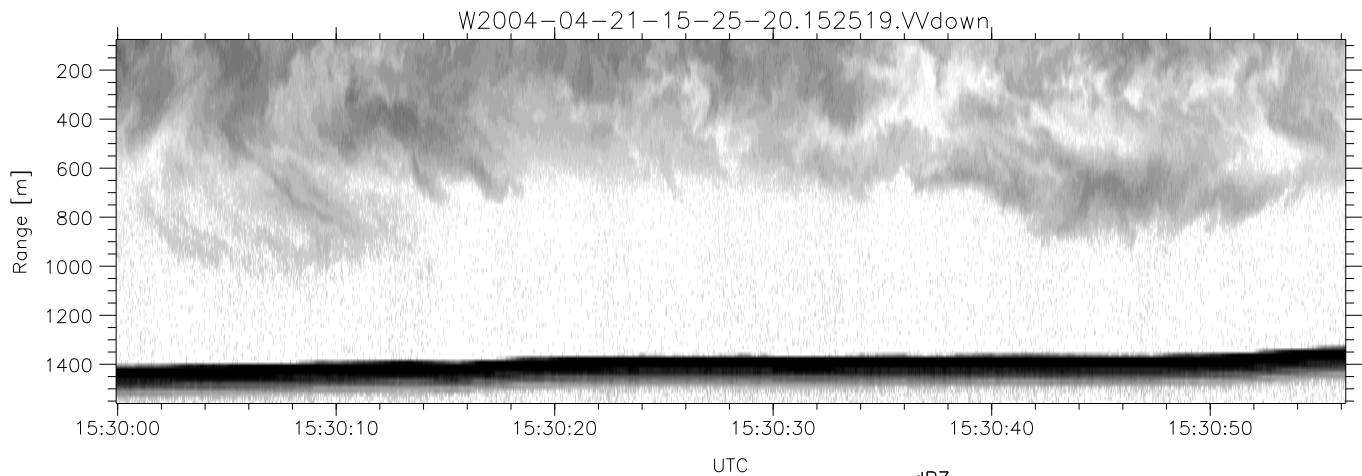
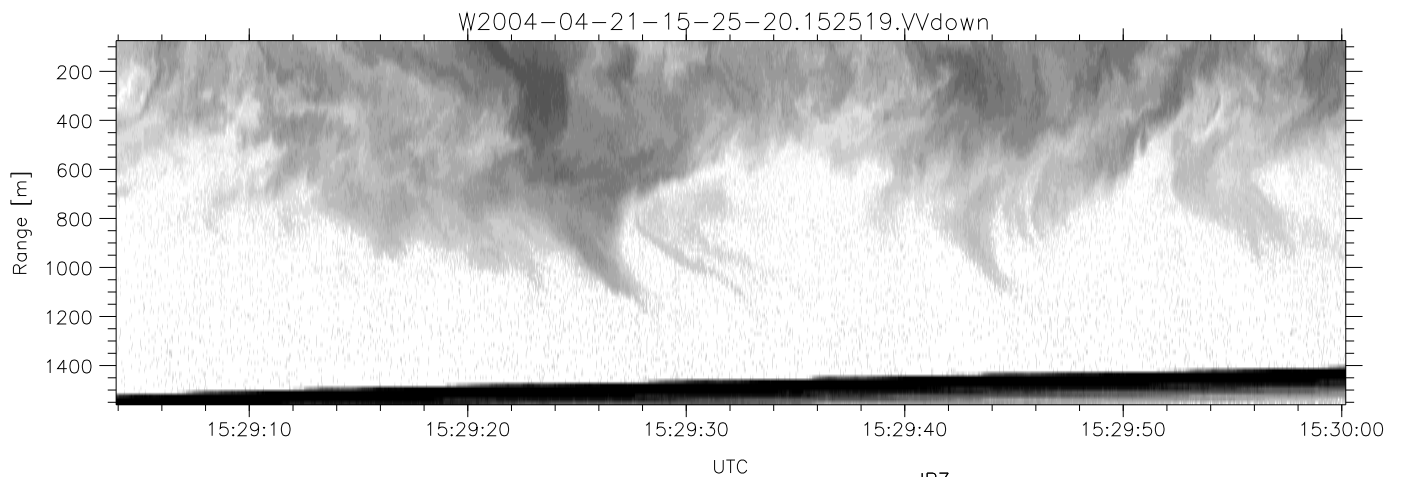
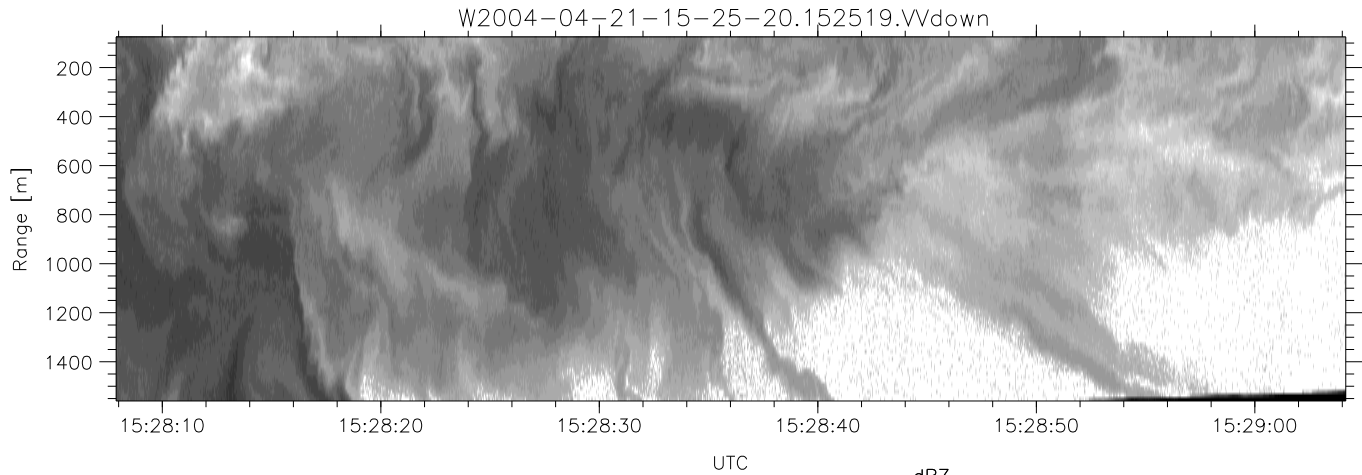


CIFEX 2004 Data (cal/250ns+2.5/100ns-3.5/500ns: 53.0,50.0)

W2004-04-21-15-25-20 - PPMAG4, IRIG:1/0/0
 UTC: 15:25:19.85 to 15:41:55.91, Dur: 996s
 TimeLngth: 996.09s, TimeInt: 28ms (35.4pps)
 TimeCor=-13.0s, PPS(min,max,med): 35,36,35
 Timeint/DSPdiff(mn,min,mx):28,28,28/28,28,28
 Prof: 280 to 35592, NumProf(r/t): 17571/35312
 ProcTime/Recs: 15:25:19-15:33:35/0-17570
 ADacqtime: 25ms; DRate: 198.4KB/s; Flags: 0, 0, 0
 Pulse: 275ns, IFilt: 5.0MHz; ppPol: HH HV VV
 TxPol: HHVV, PRF: 20 10 20 10 kHz, NoiseFlg:4,1
 Range: Delay 75m, Spacing 15m, Gates 100
 Ave. Pulses: 84, Rng/Prof Aspect@90m/s: 5.9

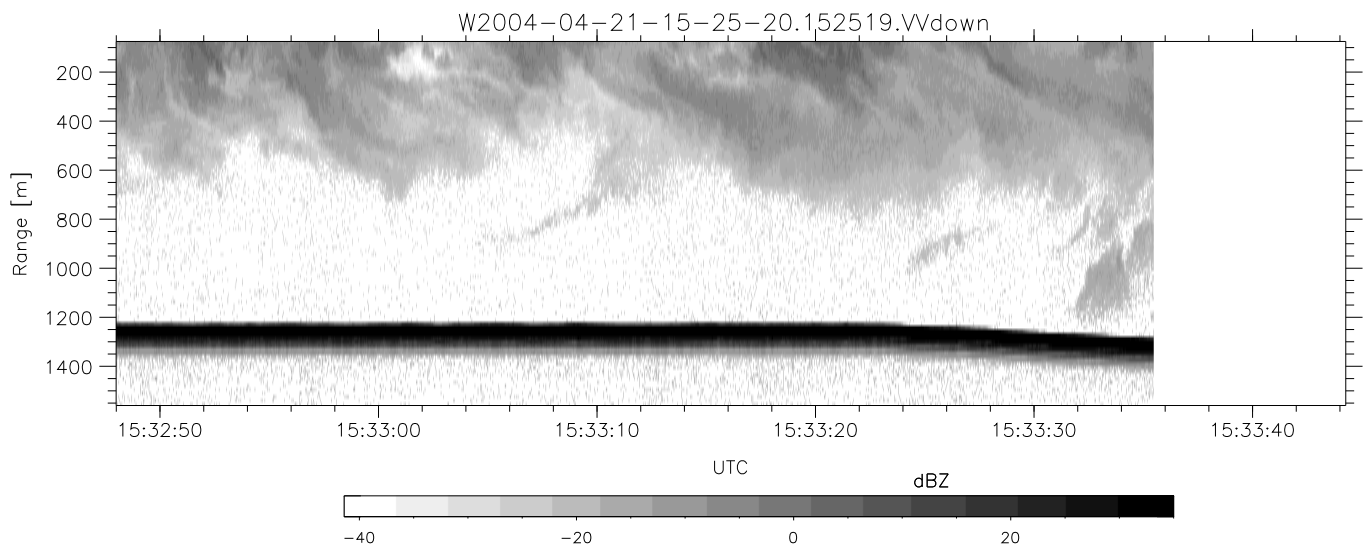
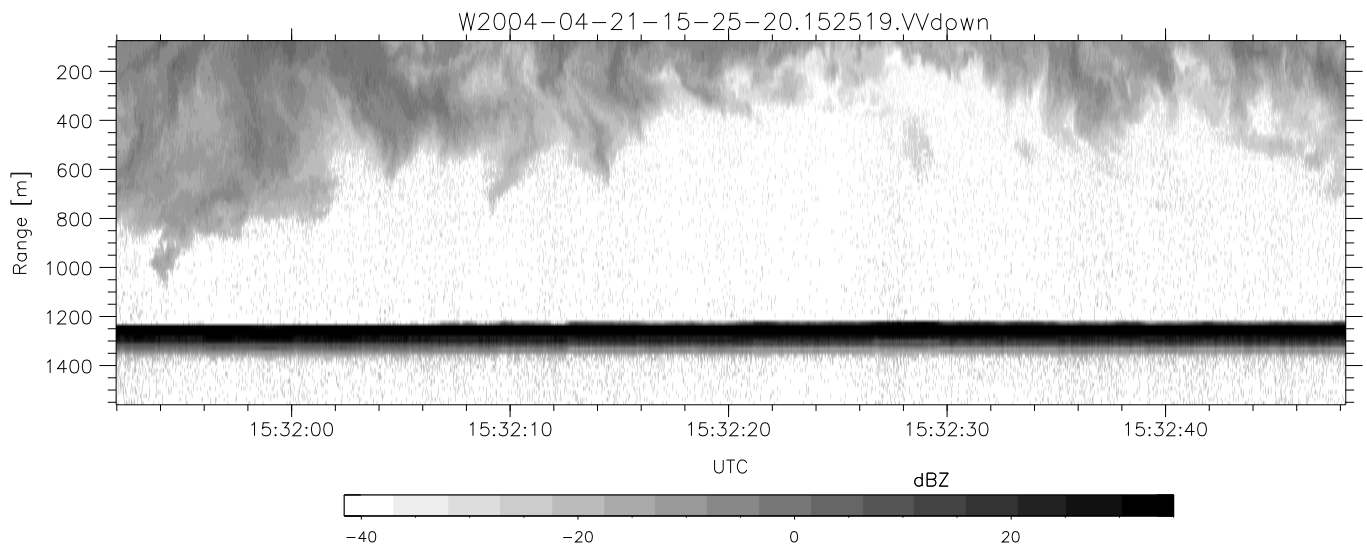
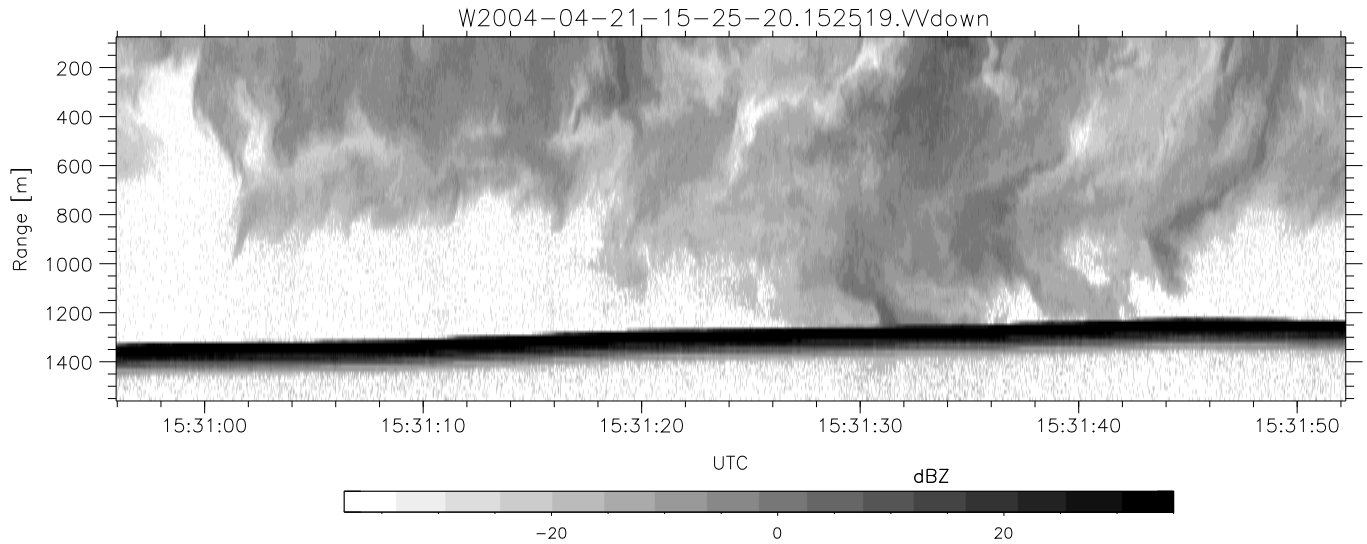
	Min	Max	Mean	Std	Varc%
hhN (dB)	-67.39	-63.84	-65.36	-75.45	9.8
vvN (dB)	-67.22	-63.64	-65.29	-75.29	10.0
hhL (dB)	-12.77	3.08	-1.43	-2.19	84.0
vvL (dB)	-13.00	6.00	5.04	0.81	37.7
ppN (m/s)	-12.28	12.60	-0.03	4.16	
ppT (m/s)	-97.05	99.52	-0.24	32.87	
hh/vv (dB)	NaN	54.28	10.29	30.90	1149
vh/hh (dB)	NaN	-27.10	-34.86	-35.32	90.0
hv/vv (dB)	NaN	-32.86	-46.24	-42.33	246.
hn_jmp (dB)			-0.15		
vn_jmp (dB)			-0.17		



CIFEX 2004 Data (cal/250ns+2.5/100ns-3.5/500ns: 53.0,50.0)

W2004-04-21-15-25-20 - PPMAG4, IRIG:1/0/0
 UTC: 15:25:19.85 to 15:41:55.91, Dur: 996s
 TimeLngth: 996.09s, TimeInt: 28ms (35.4pps)
 TimeCor=-13.0s, PPS(min,max,med): 35,36,35
 Timeint/DSPdiff(mn,min,mx):28,28,28/28,28,28
 Prof: 280 to 35592, NumProf(r/t): 17571/35312
 ProcTime/Recs: 15:25:19-15:33:35/0-17570
 ADacqtime: 25ms; DRate: 198.4KB/s; Flags: 0, 0, 0
 Pulse: 275ns, IFilt: 5.0MHz; ppPol: HH HV VV
 TxPol: HHVV, PRF: 20 10 20 10 kHz, NoiseFlg:4,1
 Range: Delay 75m, Spacing 15m, Gates 100
 Ave. Pulses: 84, Rng/Prof Aspect@90m/s: 5.9

	Min	Max	Mean	Std	Varc%
hhN(dB)	-67.39	-63.84	-65.36	-75.45	9.8
vvN(dB)	-67.22	-63.64	-65.29	-75.29	10.0
hhL(dB)	-12.77	3.08	-1.43	-2.19	84.0
vvL(dB)	-13.00	6.00	5.04	0.81	37.7
ppN(m/s)	-12.28	12.60	-0.03	4.16	
ppT(m/s)	-97.05	99.52	-0.24	32.87	
hh/vv(dB)	NaN	54.28	10.29	30.90	1149
vh/hh(dB)	NaN	-27.10	-34.86	-35.32	90.0
hv/vv(dB)	NaN	-32.86	-46.24	-42.33	246.
hnjmp(dB)			-0.15		
vnjmp(dB)			-0.17		



CIFEX 2004 Data (cal/250ns+2.5/100ns-3.5/500ns: 53.0,50.0)

W2004-04-21-15-25-20 - PPMAG4, IRIG:1/0/0
 UTC: 15:25:19.85 to 15:41:55.91, Dur: 996s
 TimeLngth: 996.09s, TimeInt: 28ms (35.4pps)
 TimeCor=-13.0s, PPS(min,max,med): 35,36,35
 Timeint/DSPdiff(mn,min,mx):28,28,28/28,28,28
 Prof: 280 to 35592, NumProf(r/t): 17571/35312
 ProcTime/Recs: 15:25:19-15:33:35/0-17570
 ADacqtime: 25ms; DRate: 198.4KB/s; Flags: 0, 0, 0
 Pulse: 275ns, IFfilt: 5.0MHz; ppPol: HH HV VV
 TxPol: HHVV, PRF: 20 10 20 10 kHz, NoiseFlg:4,1
 Range: Delay 75m, Spacing 15m, Gates 100
 Ave. Pulses: 84, Rng/Prof Aspect@90m/s: 5.9

	Min	Max	Mean	Std	Varc%
hhN (dB)	-67.39	-63.84	-65.36	-75.45	9.8
vvN (dB)	-67.22	-63.64	-65.29	-75.29	10.0
hhL (dB)	-12.77	3.08	-1.43	-2.19	84.0
vvL (dB)	-13.00	6.00	5.04	0.81	37.7
ppN (m/s)	-12.28	12.60	-0.03	4.16	
ppT (m/s)	-97.05	99.52	-0.24	32.87	
hh/vv (dB)	NaN	54.28	10.29	30.90	1149
vh/hh (dB)	NaN	-27.10	-34.86	-35.32	90.0
hv/vv (dB)	NaN	-32.86	-46.24	-42.33	246.0
hn_jmp (dB)			-0.15		
vn_jmp (dB)			-0.17		