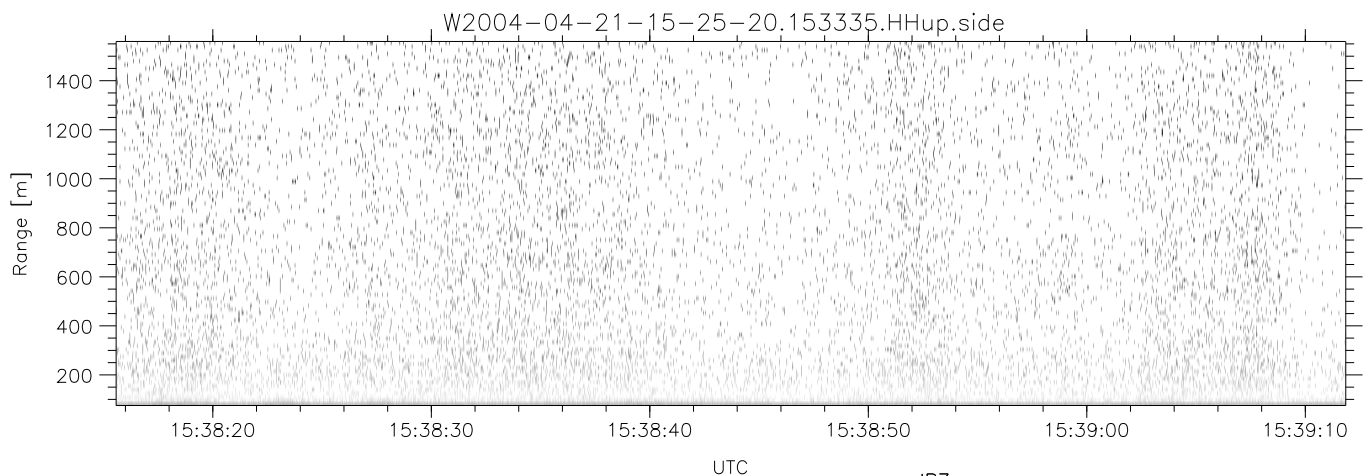
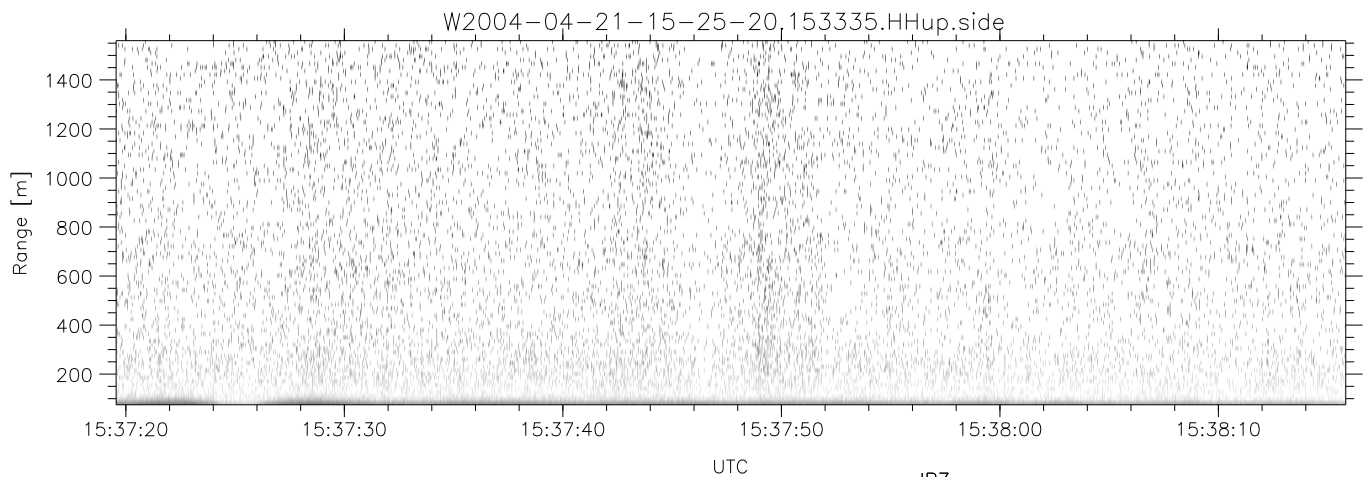
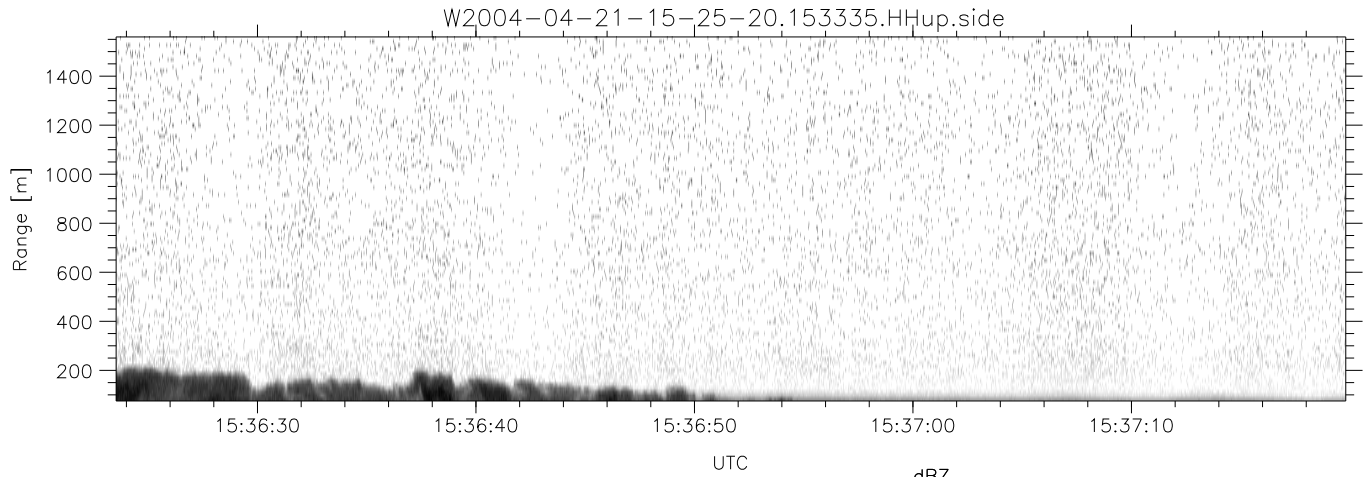


CIFEX 2004 Data (cal/250ns+2.5/100ns-3.5/500ns: 53.0,50.0)

W2004-04-21-15-25-20 - PPMAG4, IRIG:1/0/0  
 UTC: 15:25:19.85 to 15:41:55.91, Dur: 996s  
 TimeLngth: 996.09s, TimeInt: 28ms (35.4pps)  
 TimeCor=-13.0s, PPS(min,max,med): 35,36,35  
 Timeint/DSPdiff(mn,min,mx):28,28,29/28,28,29  
 Prof: 280 to 35592, NumProf(r/t): 17571/35312  
 ProcTime/Recs: 15:33:35-15:41:51/17571-35141  
 ADacqtime: 25ms; DRate: 198.4KB/s; Flags: 0, 0, 0  
 Pulse: 275ns, IFfilt: 5.0MHz; ppPol: HH HV VV  
 TxPol: HHVV, PRF: 20 10 20 10 kHz, Noiseflg:4,1  
 Range: Delay 75m, Spacing 15m, Gates 100  
 Ave. Pulses: 84, Rng/Prof Aspect@90m/s: 5.9

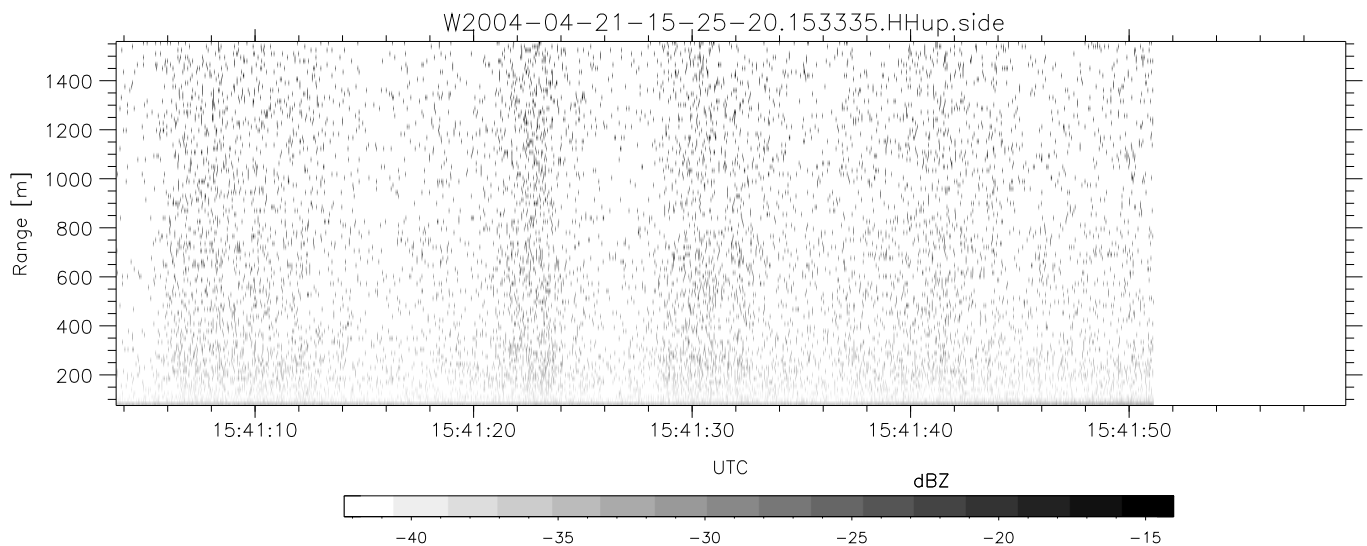
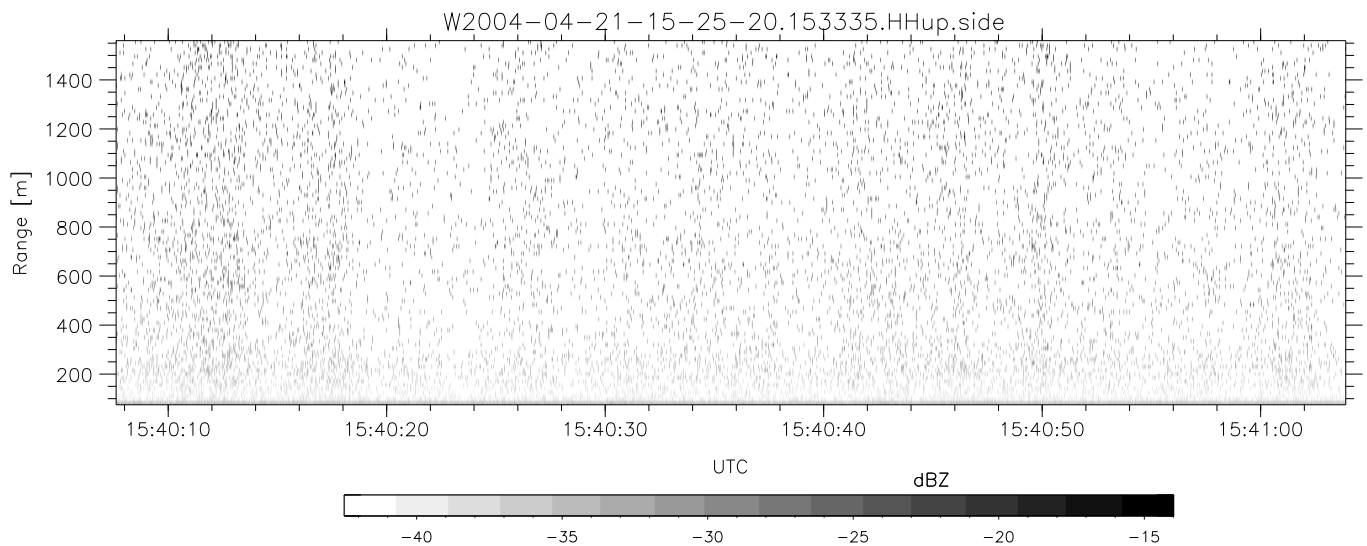
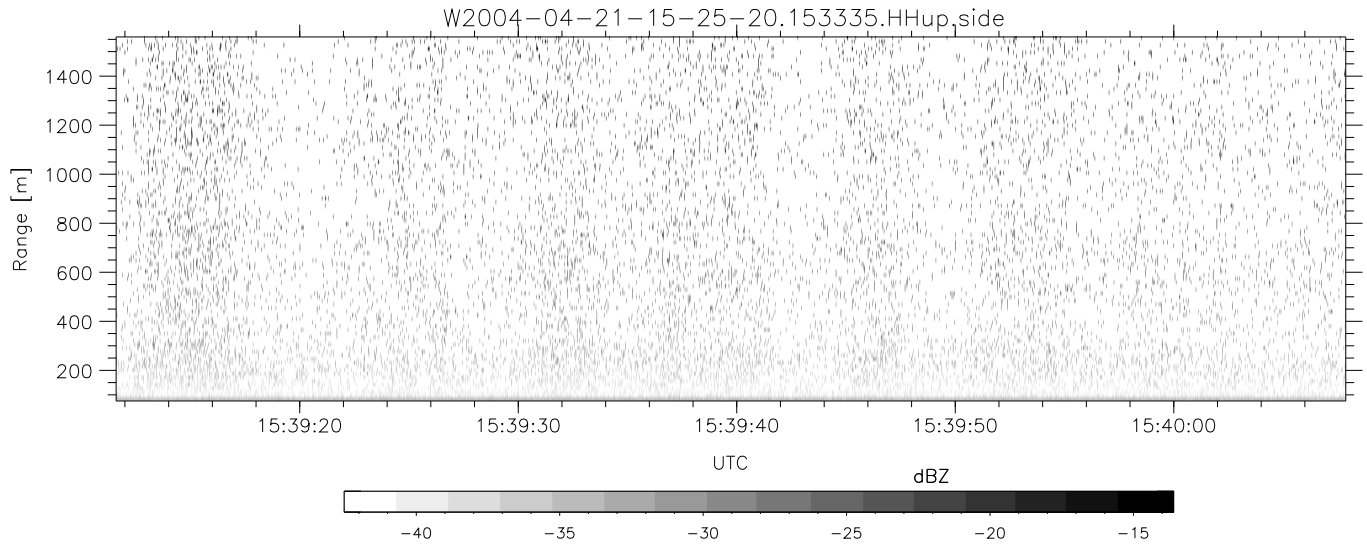
	Min	Max	Mean	Std	Varc%
hhN(dB)	-67.14	-63.76	-65.42	-75.47	9.9
vvN(dB)	-67.56	-63.87	-65.33	-75.41	9.8
hhL(dB)	-14.83	2.52	-2.85	-3.03	96.0
vvL(dB)	-2.44	6.00	5.78	-3.59	11.6
ppN(m/s)	-12.47	12.07	-0.10	4.18	
ppT(m/s)	-98.53	95.35	-0.77	33.01	
hh/vv(dB)	-35.47	18.92	-3.77	3.21	498.
vh/hh(dB)	NaN	-26.34	-32.76	-34.73	63.5
hv/vv(dB)	NaN	-33.04	-45.90	-42.27	231.
hnjmp(dB)			0.15		
vnjmp(dB)			0.14		



CIFEX 2004 Data (cal/250ns+2.5/100ns-3.5/500ns: 53.0,50.0)

W2004-04-21-15-25-20 - PPMAG4, IRIG:1/0/0  
 UTC: 15:25:19.85 to 15:41:55.91, Dur: 996s  
 TimeLngth: 996.09s, TimeInt: 28ms (35.4pps)  
 TimeCor=-13.0s, PPS(min,max,med): 35,36,35  
 Timeint/DSPdiff(mn,min,mx):28,28,29/28,28,29  
 Prof: 280 to 35592, NumProf(r/t): 17571/35312  
 ProcTime/Recs: 15:33:35-15:41:51/17571-35141  
 ADacqtime: 25ms; DRate: 198.4KB/s; Flags: 0, 0, 0  
 Pulse: 275ns, IFfilt: 5.0MHz; ppPol: HH HV VV  
 TxPol: HHVV, PRF: 20 10 20 10 kHz, Noiseflg:4,1  
 Range: Delay 75m, Spacing 15m, Gates 100  
 Ave. Pulses: 84, Rng/Prof Aspect@90m/s: 5.9

	Min	Max	Mean	Std	Varc%
hhN(dB)	-67.14	-63.76	-65.42	-75.47	9.9
vvN(dB)	-67.56	-63.87	-65.33	-75.41	9.8
hhL(dB)	-14.83	2.52	-2.85	-3.03	96.0
vvL(dB)	-2.44	6.00	5.78	-3.59	11.6
ppN(m/s)	-12.47	12.07	-0.10	4.18	
ppT(m/s)	-98.53	95.35	-0.77	33.01	
hh/vv(dB)	-35.47	18.92	-3.77	3.21	498.
vh/hh(dB)	NaN	-26.34	-32.76	-34.73	63.5
hv/vv(dB)	NaN	-33.04	-45.90	-42.27	231.
hnjmp(dB)			0.15		
vnjmp(dB)			0.14		



CIFEX 2004 Data (cal/250ns+2.5/100ns-3.5/500ns: 53.0,50.0)

W2004-04-21-15-25-20 - PPMAG4, IRIG:1/0/0  
 UTC: 15:25:19.85 to 15:41:55.91, Dur: 996s  
 TimeLngth: 996.09s, TimeInt: 28ms (35.4pps)  
 TimeCor=-13.0s, PPS(min,max,med): 35,36,35  
 Timeint/DSPdiff(mn,min,mx):28,28,29/28,28,29  
 Prof: 280 to 35592, NumProf(r/t): 17571/35312  
 ProcTime/Recs: 15:33:35-15:41:51/17571-35141  
 ADacqtime: 25ms; DRate: 198.4KB/s; Flags: 0, 0, 0  
 Pulse: 275ns, IFfilt: 5.0MHz; ppPol: HH HV VV  
 TxPol: HHVV, PRF: 20 10 20 10 kHz, Noiseflg:4,1  
 Range: Delay 75m, Spacing 15m, Gates 100  
 Ave. Pulses: 84, Rng/Prof Aspect@90m/s: 5.9

	Min	Max	Mean	Std	Varc%
hhN(dB)	-67.14	-63.76	-65.42	-75.47	9.9
vvN(dB)	-67.56	-63.87	-65.33	-75.41	9.8
hhL(dB)	-14.83	2.52	-2.85	-3.03	96.0
vvL(dB)	-2.44	6.00	5.78	-3.59	11.6
ppN(m/s)	-12.47	12.07	-0.10	4.18	
ppT(m/s)	-98.53	95.35	-0.77	33.01	
hh/vv(dB)	-35.47	18.92	-3.77	3.21	498.
vh/hh(dB)	NaN	-26.34	-32.76	-34.73	63.5
hv/vv(dB)	NaN	-33.04	-45.90	-42.27	231.
hh/jmp(dB)			0.15		
vv/jmp(dB)			0.14		