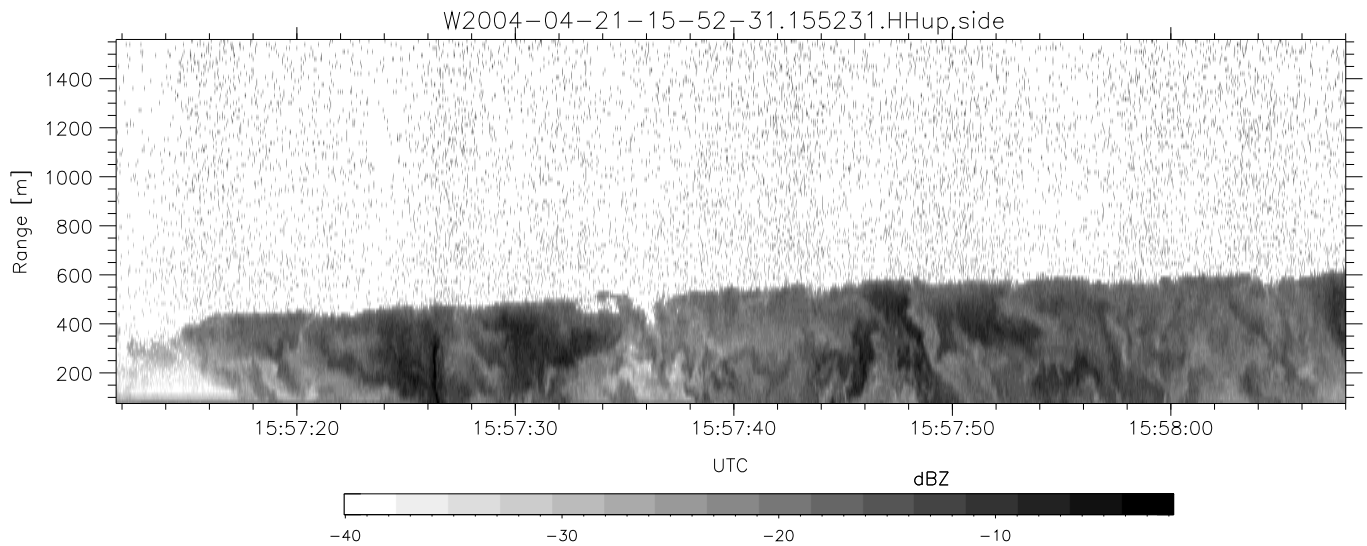
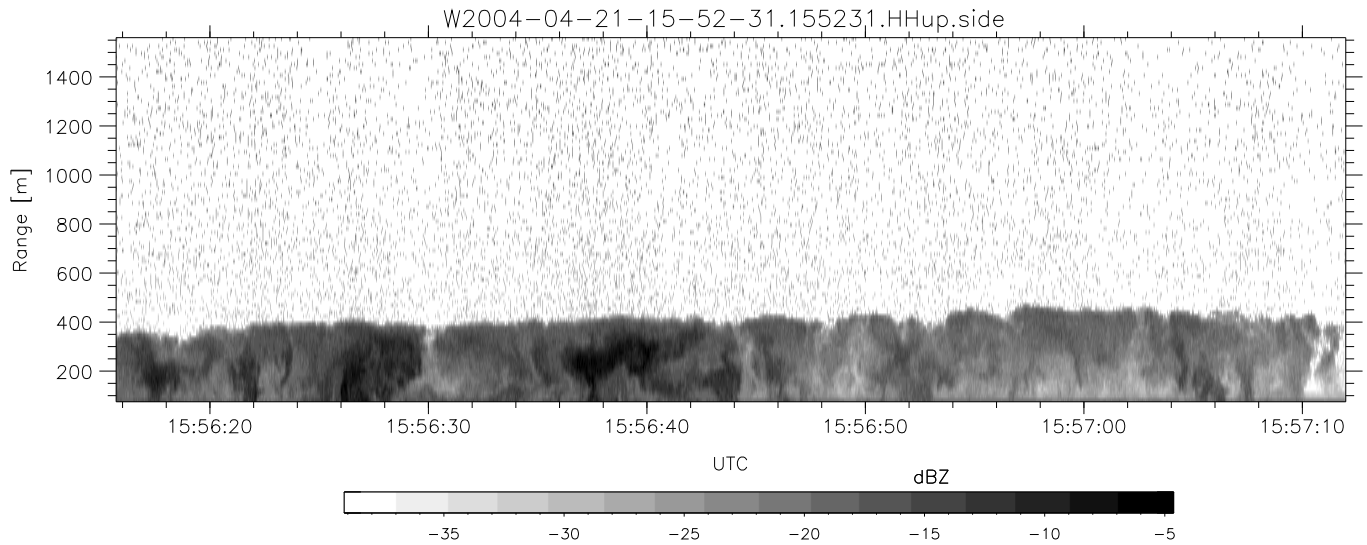
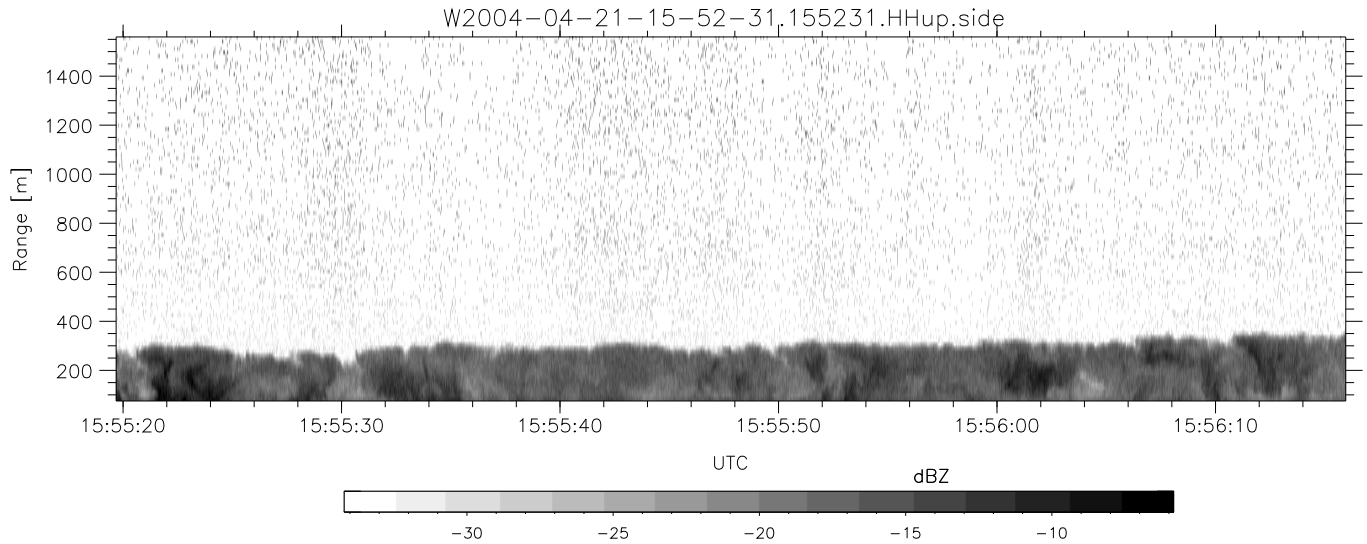


CIFEX 2004 Data (cal/250ns+2.5/100ns-3.5/500ns: 53.0,50.0)

W2004-04-21-15-52-31 - PPMAG4, IRIG:1/0/2
 UTC: 15:52:31.65 to 16:01:04.81, Dur: 513s
 TimeLngth: 513.18s, TimeInt: 28ms (35.4pps)
 TimeCor=-13.0s, PPS(min,max,med): 35,36,35
 Timeint/DSPdiff(mn,min,mx):28,28,28/28,28,28
 Prof: 283 to 18476, NumProf(r/t): 18193/18193
 ADacqtime: 25ms; DRate: 198.5KB/s; Flags: 0, 0, 0
 Pulse: 275ns, IFfilt: 5.0MHz; ppPol: HH HV W
 TxPol: HHVV, PRF: 20 10 20 10 kHz, NoiseFlg:4,2
 Range: Delay 75m, Spacing 15m, Gates 100
 Ave. Pulses: 84, Rng/Prof Aspect@90m/s: 5.9

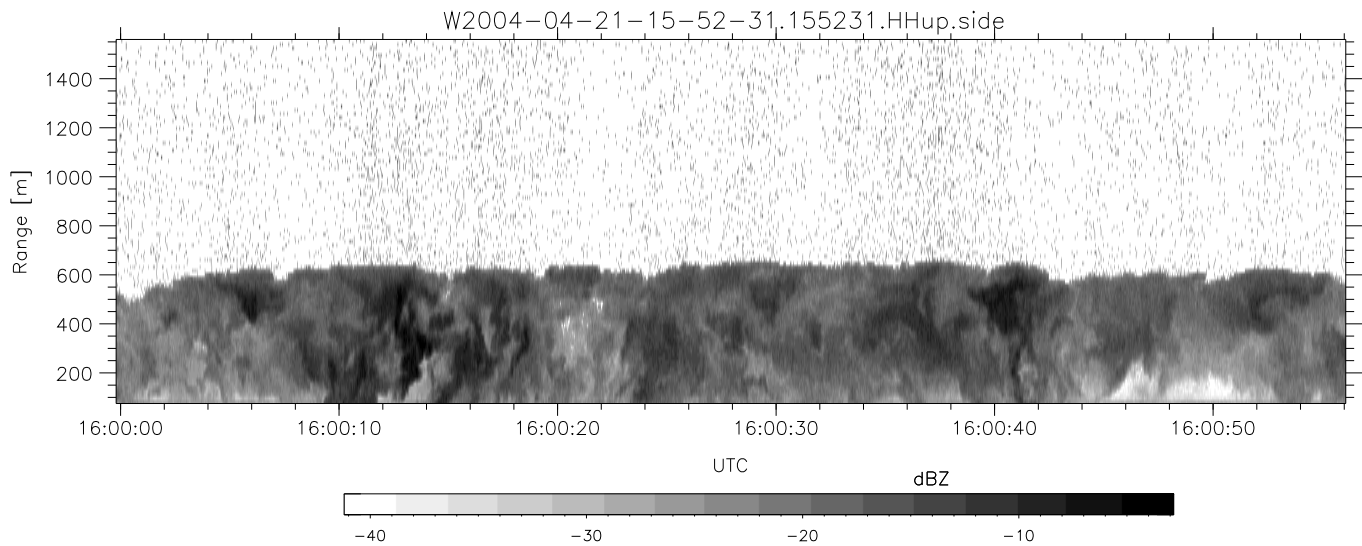
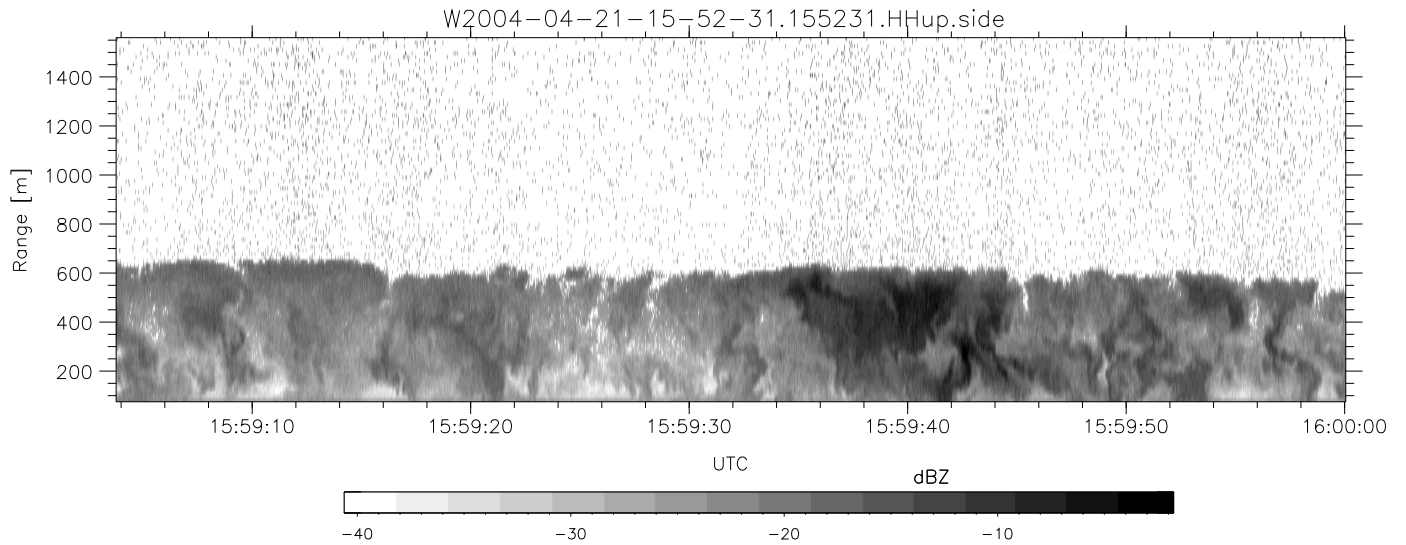
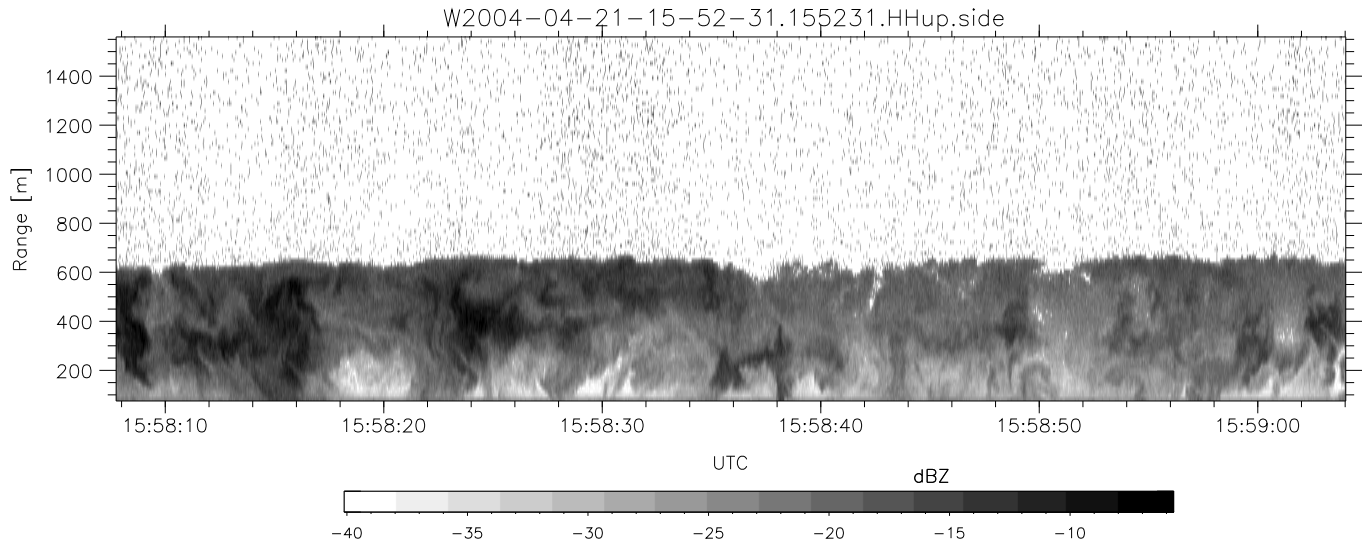
	Min	Max	Mean	Std	Varc%
hhN (dB)	-67.24	-64.12	-65.62	-75.74	9.7
vvN (dB)	-67.74	-64.07	-65.61	-75.60	10.0
hhL (dB)	-9.15	3.38	0.36	-2.04	57.4
vvL (dB)	4.87	6.00	6.00	-17.93	0.4
ppN (m/s)	-12.53	12.31	0.02	4.14	
ppT (m/s)	-99.01	97.21	0.16	32.72	
hh/vv (dB)	NaN	59.76	16.65	40.55	2452
vh/hh (dB)	NaN	-27.56	-33.28	-35.06	66.4
hv/vv (dB)	NaN	-33.49	-52.79	-45.05	594.
hn_jmp (dB)				0.15	
vn_jmp (dB)				0.16	



CIFEX 2004 Data (cal/250ns+2.5/100ns-3.5/500ns: 53.0,50.0)

W2004-04-21-15-52-31 - PPMAG4, IRIG:1/0/2
 UTC: 15:52:31.65 to 16:01:04.81, Dur: 513s
 TimeLngth: 513.18s, TimeInt: 28ms (35.4pps)
 TimeCor=-13.0s, PPS(min,max,med): 35,36,35
 Timeint/DSPdiff(mn,min,mx):28,28,28/28,28,28
 Prof: 283 to 18476, NumProf(r/t): 18193/18193
 ADacqtime: 25ms; DRate: 198.5KB/s; Flags: 0, 0, 0
 Pulse: 275ns, IFfilt: 5.0MHz; ppPol: HH HV VV
 TxPol: HHVV, PRF: 20 10 20 10 kHz, NoiseFlg:4,2
 Range: Delay 75m, Spacing 15m, Gates 100
 Ave. Pulses: 84, Rng/Prof Aspect@90m/s: 5.9

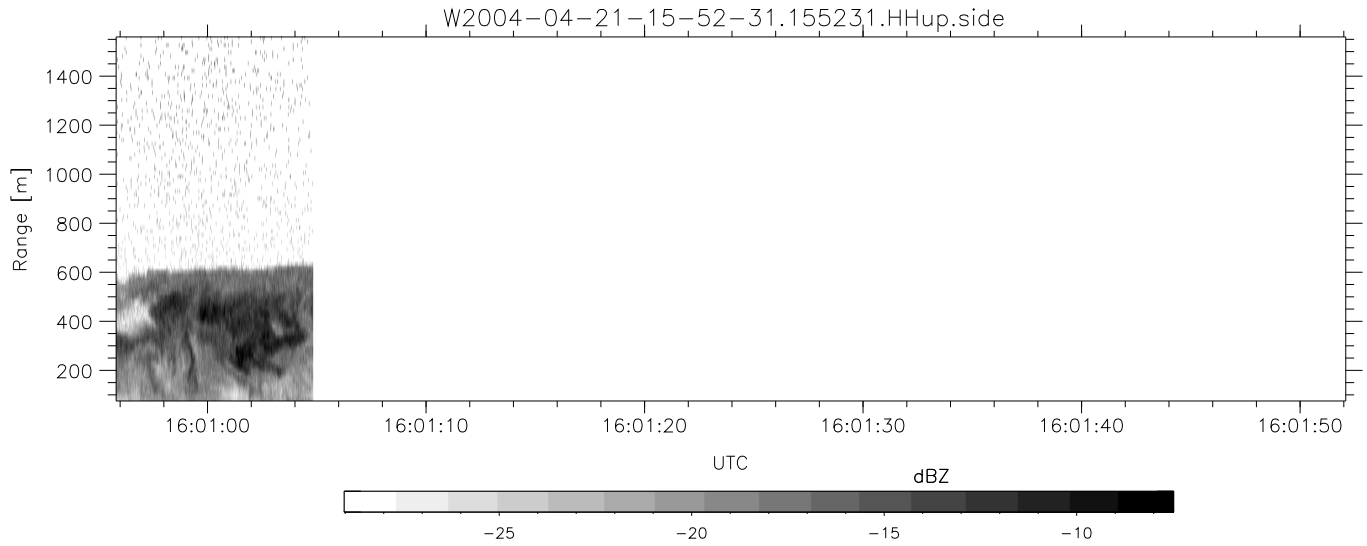
	Min	Max	Mean	Std	Varc%
hhN (dB)	-67.24	-64.12	-65.62	-75.74	9.7
vvN (dB)	-67.74	-64.07	-65.61	-75.60	10.0
hhL (dB)	-9.15	3.38	0.36	-2.04	57.4
vvL (dB)	4.87	6.00	6.00	-17.93	0.4
ppN (m/s)	-12.53	12.31	0.02	4.14	
ppT (m/s)	-99.01	97.21	0.16	32.72	
hh/vv (dB)	NaN	59.76	16.65	40.55	2452
vh/hh (dB)	NaN	-27.56	-33.28	-35.06	66.4
hv/vv (dB)	NaN	-33.49	-52.79	-45.05	594.
hn_jmp (dB)				0.15	
vn_jmp (dB)				0.16	



CIFEX 2004 Data (cal/250ns+2.5/100ns-3.5/500ns: 53.0,50.0)

W2004-04-21-15-52-31 - PPMAG4, IRIG:1/0/2
 UTC: 15:52:31.65 to 16:01:04.81, Dur: 513s
 TimeLngth: 513.18s, TimeInt: 28ms (35.4pps)
 TimeCor=-13.0s, PPS(min,max,med): 35,36,35
 Timeint/DSPdiff(mn,min,mx):28,28,28/28,28,28
 Prof: 283 to 18476, NumProf(r/t): 18193/18193
 ADacqtime: 25ms; DRate: 198.5KB/s; Flags: 0, 0, 0
 Pulse: 275ns, IFfilt: 5.0MHz; ppPol: HH HV VV
 TxPol: HHVV, PRF: 20 10 20 10 kHz, NoiseFlg:4,2
 Range: Delay 75m, Spacing 15m, Gates 100
 Ave. Pulses: 84, Rng/Prof Aspect@90m/s: 5.9

	Min	Max	Mean	Std	Varc%
hhN(dB)	-67.24	-64.12	-65.62	-75.74	9.7
vvN(dB)	-67.74	-64.07	-65.61	-75.60	10.0
hhL(dB)	-9.15	3.38	0.36	-2.04	57.4
vvL(dB)	4.87	6.00	6.00	-17.93	0.4
ppN(m/s)	-12.53	12.31	0.02	4.14	
ppT(m/s)	-99.01	97.21	0.16	32.72	
hh/vv(dB)	NaN	59.76	16.65	40.55	2452
vh/hh(dB)	NaN	-27.56	-33.28	-35.06	66.4
hv/vv(dB)	NaN	-33.49	-52.79	-45.05	594.
hn_jmp(dB)			0.15		
vn_jmp(dB)			0.16		



CIFEX 2004 Data (cal/250ns+2.5/100ns-3.5/500ns: 53.0,50.0)

W2004-04-21-15-52-31 - PPMAG4, IRIG:1/0/2
 UTC: 15:52:31.65 to 16:01:04.81, Dur: 513s
 TimeLngth: 513.18s, TimeInt: 28ms (35.4pps)
 TimeCor=-13.0s, PPS(min,max,med): 35,36,35
 Timeint/DSPdiff(mn,min,mx):28,28,28/28,28,28
 Prof: 283 to 18476, NumProf(r/t): 18193/18193
 ADacqtime: 25ms; DRate: 198.5kB/s; Flags: 0, 0, 0
 Pulse: 275ns, IFfilt: 5.0MHz; ppPol: HH HV VV
 TxPol: HHVV, PRF: 20 10 20 10 kHz, NoiseFlg:4,2
 Range: Delay 75m, Spacing 15m, Gates 100
 Ave. Pulses: 84, Rng/Prof Aspect@90m/s: 5.9

	Min	Max	Mean	Std	Varc%
hhN(dB)	-67.24	-64.12	-65.62	-75.74	9.7
vvN(dB)	-67.74	-64.07	-65.61	-75.60	10.0
hhL(dB)	-9.15	3.38	0.36	-2.04	57.4
vvL(dB)	4.87	6.00	6.00	-17.93	0.4
ppN(m/s)	-12.53	12.31	0.02	4.14	
ppT(m/s)	-99.01	97.21	0.16	32.72	
hh/vv(dB)	NaN	59.76	16.65	40.55	2452
vh/hh(dB)	NaN	-27.56	-33.28	-35.06	66.4
hv/vv(dB)	NaN	-33.49	-52.79	-45.05	594.
hnjmp(dB)			0.15		
vnjmp(dB)			0.16		