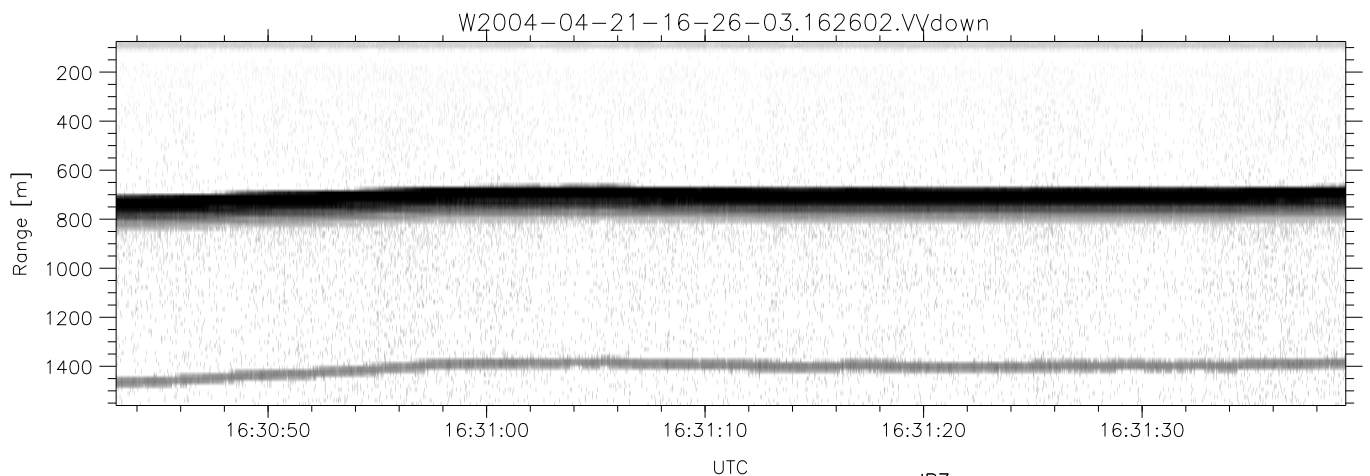
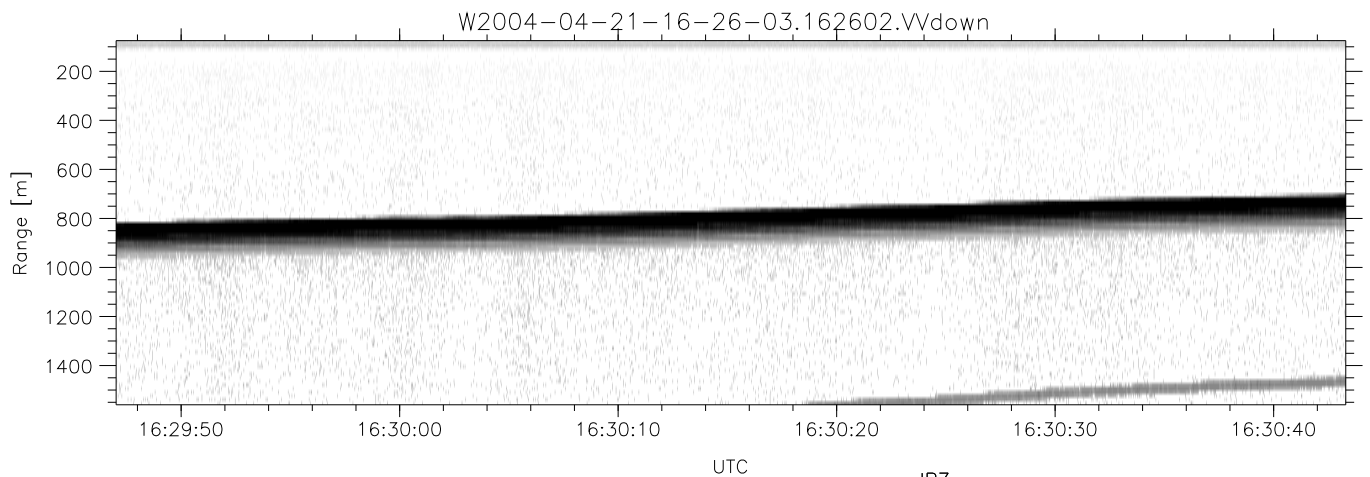
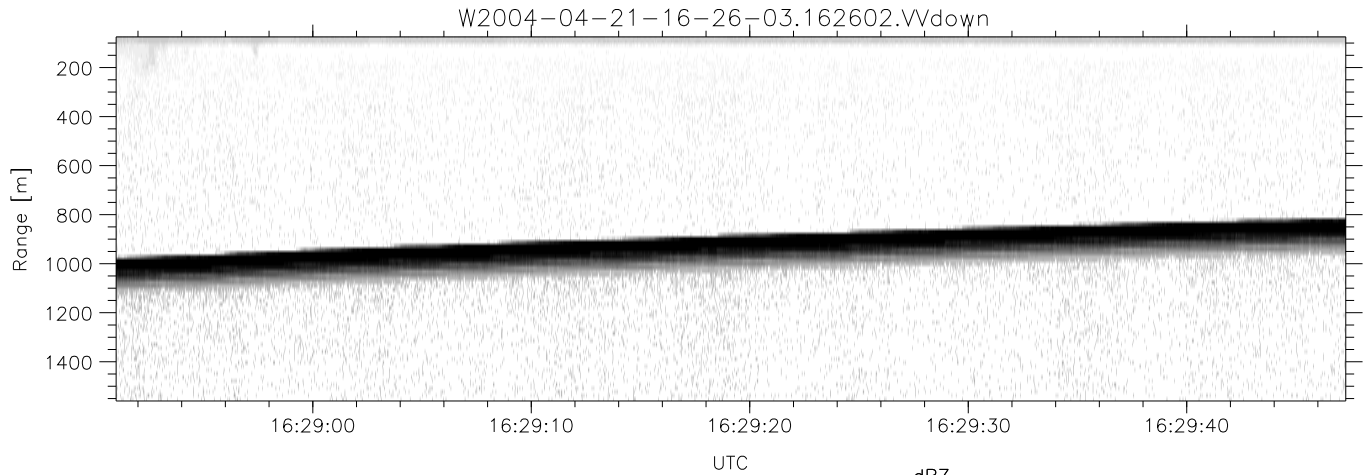


CIFEX 2004 Data (cal/250ns+2.5/100ns-3.5/500ns: 53.0,50.0)

W2004-04-21-16-26-03 - PPMAG4, IRIG:1/0/2  
 UTC: 16:26:02.96 to 17:03:07.55, Dur: 2225s  
 TimeLngth: 2224.62s, TimeInt: 28ms (35.4pps)  
 TimeCor=-13.0s, PPS(min,max,med): 35,36,35  
 Timeint/DSPdiff(mn,min,mx):28,28,29/28,28,28  
 Prof: 52476 to 131339, NumProf(r/t): 17571/78863  
 ProcTime/Recs: 16:26:02-16:34:18/0-17570  
 ADacqtime: 25ms; DRate: 198.4KB/s; Flags: 0, 0, 0  
 Pulse: 275ns, IFilt: 5.0MHz; ppPol: HH HV VV  
 TxPol: HHVV, PRF: 20 10 20 10 kHz, NoiseFlg:4,4  
 Range: Delay 75m, Spacing 15m, Gates 100  
 Ave. Pulses: 84, Rng/Prof Aspect@90m/s: 5.9

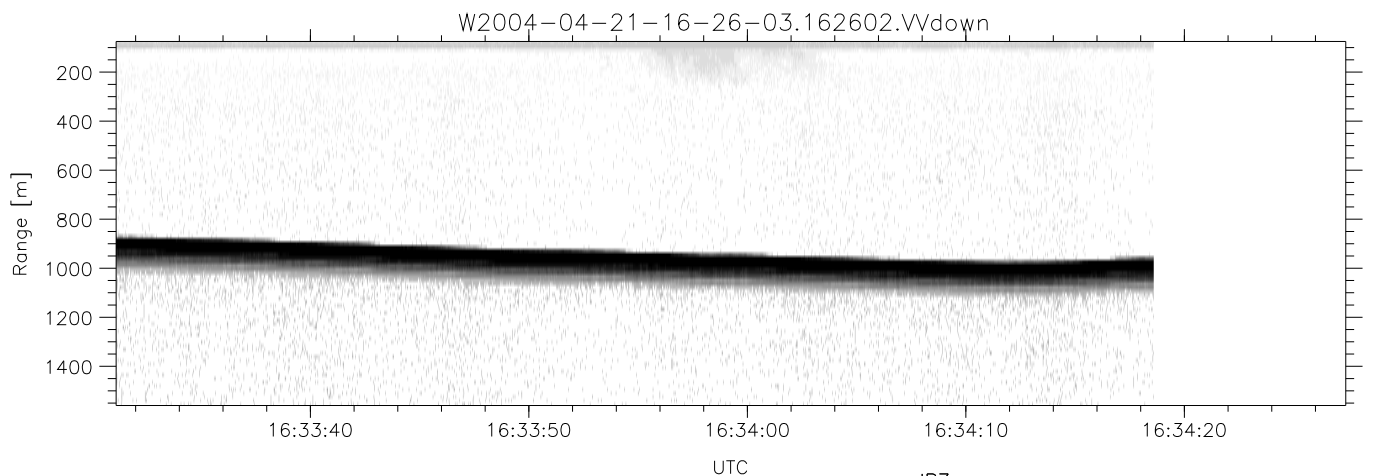
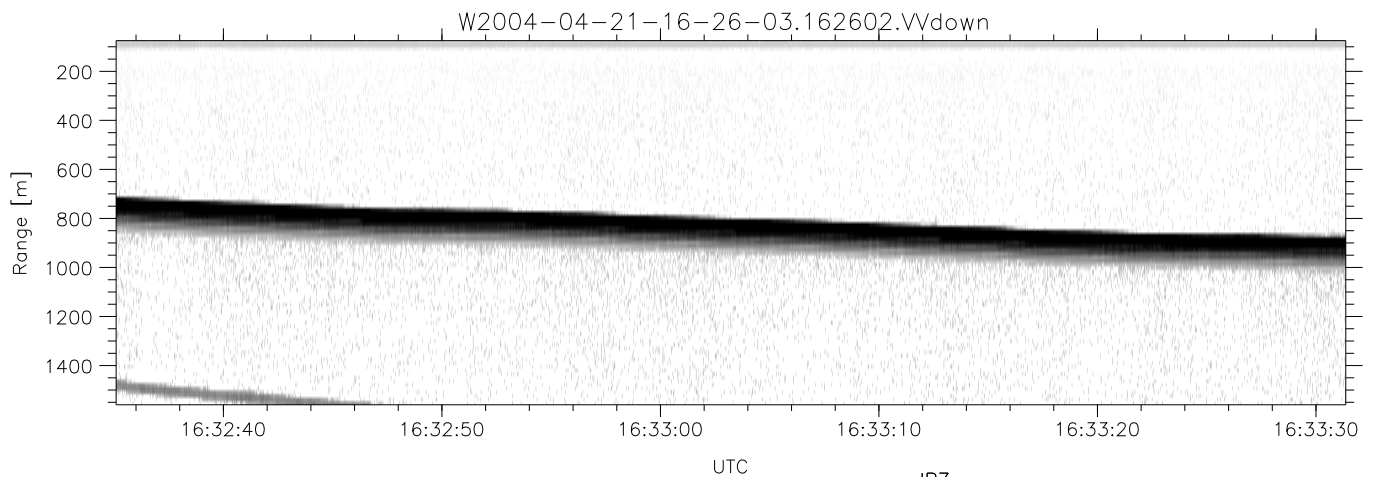
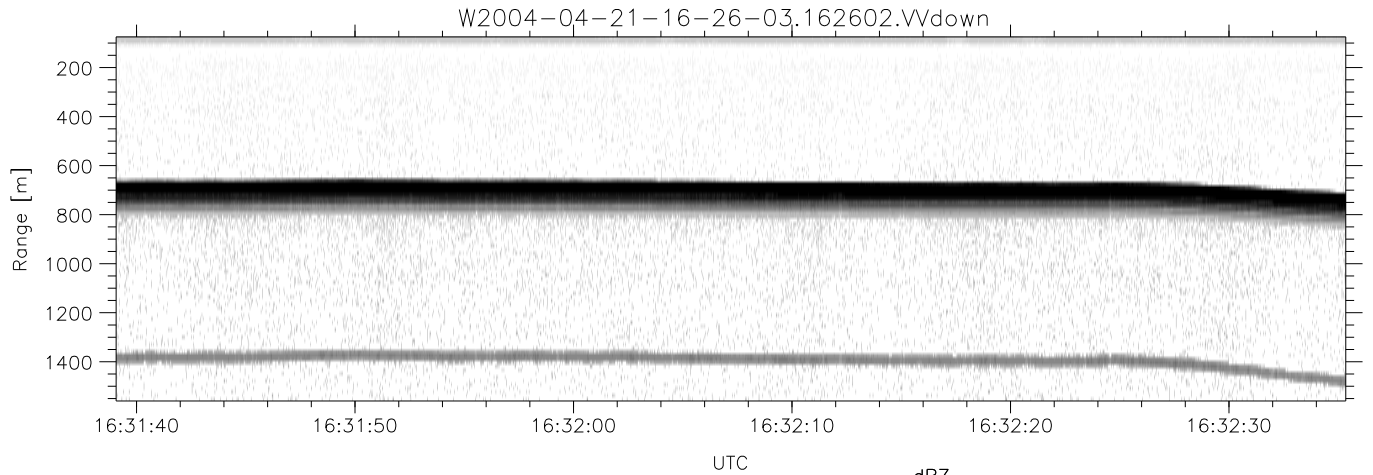
	Min	Max	Mean	Std	Varc%
hhN (dB)	-67.85	-64.36	-65.93	-75.97	9.9
vvN (dB)	-68.10	-64.21	-65.98	-75.90	10.2
hhL (dB)	-5.88	2.95	0.53	-3.27	41.7
vvL (dB)	2.45	6.00	5.89	-5.30	7.6
ppN (m/s)	-12.11	12.68	-0.08	4.16	
ppT (m/s)	-95.64	100.15	-0.60	32.84	
hh/vv (dB)	NaN	43.23	9.21	23.48	2671
vh/hh (dB)	NaN	-27.95	-32.37	-35.37	50.1
hv/vv (dB)	NaN	-34.65	-60.02	-47.56	1761
hnjmp (dB)			-0.16		
vnjmp (dB)			-0.17		



CIFEX 2004 Data (cal/250ns+2.5/100ns-3.5/500ns: 53.0,50.0)

W2004-04-21-16-26-03 - PPMAG4, IRIG:1/0/2  
 UTC: 16:26:02.96 to 17:03:07.55, Dur: 2225s  
 TimeLngth: 2224.62s, TimeInt: 28ms (35.4pps)  
 TimeCor=-13.0s, PPS(min,max,med): 35,36,35  
 Timeint/DSPdiff(mn,min,mx):28,28,29/28,28,28  
 Prof: 52476 to 131339, NumProf(r/t): 17571/78863  
 ProcTime/Recs: 16:26:02-16:34:18/0-17570  
 ADacqtime: 25ms; DRate: 198.4KB/s; Flags: 0, 0, 0  
 Pulse: 275ns, IFfilt: 5.0MHz; ppPol: HH HV VV  
 TxPol: HHVV, PRF: 20 10 20 10 kHz, Noiseflg:4,4  
 Range: Delay 75m, Spacing 15m, Gates 100  
 Ave. Pulses: 84, Rng/Prof Aspect@90m/s: 5.9

	Min	Max	Mean	Std	Varc%
hhN (dB)	-67.85	-64.36	-65.93	-75.97	9.9
vvN (dB)	-68.10	-64.21	-65.98	-75.90	10.2
hhL (dB)	-5.88	2.95	0.53	-3.27	41.7
vvL (dB)	2.45	6.00	5.89	-5.30	7.6
ppN (m/s)	-12.11	12.68	-0.08	4.16	
ppT (m/s)	-95.64	100.15	-0.60	32.84	
hh/vv (dB)	NaN	43.23	9.21	23.48	2671
vh/hh (dB)	NaN	-27.95	-32.37	-35.37	50.1
hv/vv (dB)	NaN	-34.65	-60.02	-47.56	1761
hn_jmp (dB)			-0.16		
vn_jmp (dB)			-0.17		



CIFEX 2004 Data (cal/250ns+2.5/100ns-3.5/500ns: 53.0,50.0)

W2004-04-21-16-26-03 - PPMAG4, IRIG:1/0/2  
 UTC: 16:26:02.96 to 17:03:07.55, Dur: 2225s  
 TimeLngth: 2224.62s, TimeInt: 28ms (35.4pps)  
 TimeCor=-13.0s, PPS(min,max,med): 35,36,35  
 Timeint/DSPdiff(mn,min,mx):28,28,29/28,28,28  
 Prof: 52476 to 131339, NumProf(r/t): 17571/78863  
 ProcTime/Recs: 16:26:02-16:34:18/0-17570  
 ADacqtime: 25ms; DRate: 198.4KB/s; Flags: 0, 0, 0  
 Pulse: 275ns, IFfilt: 5.0MHz; ppPol: HH HV VV  
 TxPol: HHVV, PRF: 20 10 20 10 kHz, Noiseflg:4,4  
 Range: Delay 75m, Spacing 15m, Gates 100  
 Ave. Pulses: 84, Rng/Prof Aspect@90m/s: 5.9

	Min	Max	Mean	Std	Varc%
hhN (dB)	-67.85	-64.36	-65.93	-75.97	9.9
vvN (dB)	-68.10	-64.21	-65.98	-75.90	10.2
hhL (dB)	-5.88	2.95	0.53	-3.27	41.7
vvL (dB)	2.45	6.00	5.89	-5.30	7.6
ppN (m/s)	-12.11	12.68	-0.08	4.16	
ppT (m/s)	-95.64	100.15	-0.60	32.84	
hh/vv (dB)	NaN	43.23	9.21	23.48	2671
vh/hh (dB)	NaN	-27.95	-32.37	-35.37	50.1
hv/vv (dB)	NaN	-34.65	-60.02	-47.56	1761
hnjmp (dB)			-0.16		
vnjmp (dB)			-0.17		