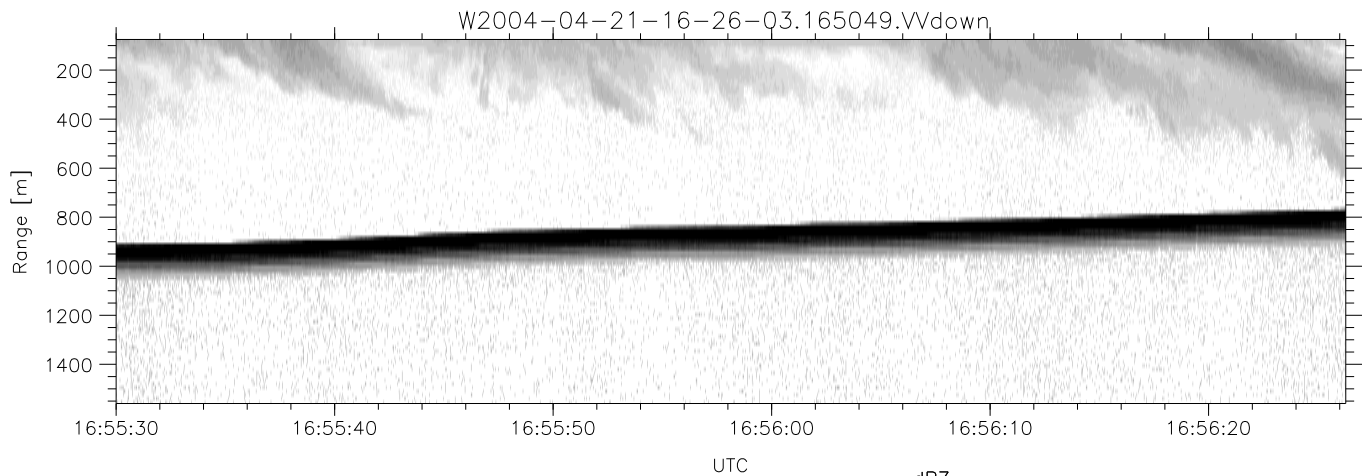
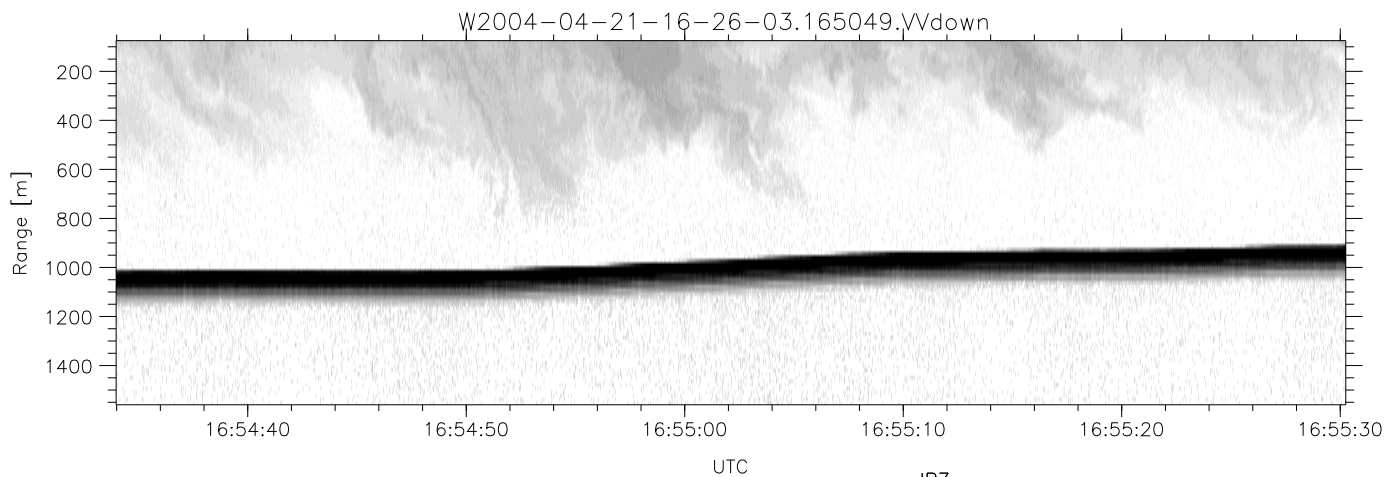
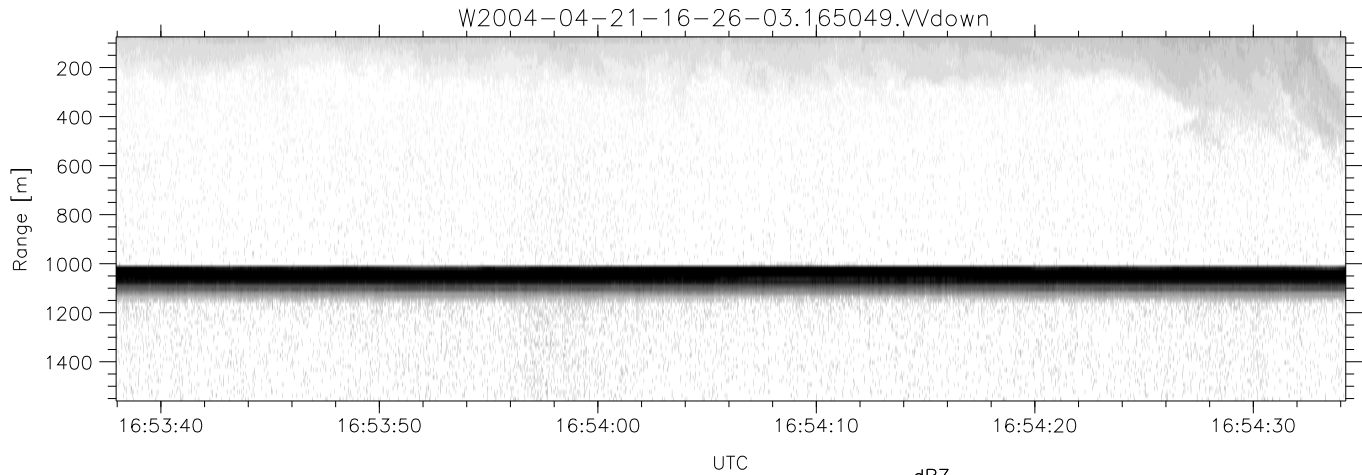


CIFEX 2004 Data (cal/250ns+2.5/100ns-3.5/500ns: 53.0,50.0)

W2004-04-21-16-26-03 - PPMAG4, IRIG:1/0/2  
 UTC: 16:26:02.96 to 17:03:07.55, Dur: 2225s  
 TimeLngth: 2224.62s, TimeInt: 28ms (35.4pps)  
 TimeCor=-13.0s, PPS(min,max,med): 35,36,35  
 Timeint/DSPdiff(mn,min,mx):28,28,28/28,28,28  
 Prof: 52476 to 131339, NumProf(r/t): 17571/78863  
 ProcTime/Recs: 16:50:49-16:59:05/52713-70283  
 ADacqtime: 25ms; DRate: 198.4KB/s; Flags: 0, 0, 0  
 Pulse: 275ns, IFilt: 5.0MHz; ppPol: HH HV VV  
 TxPol: HHVV, PRF: 20 10 20 10 kHz, NoiseFlg:2,2  
 Range: Delay 75m, Spacing 15m, Gates 100  
 Ave. Pulses: 84, Rng/Prof Aspect@90m/s: 5.9

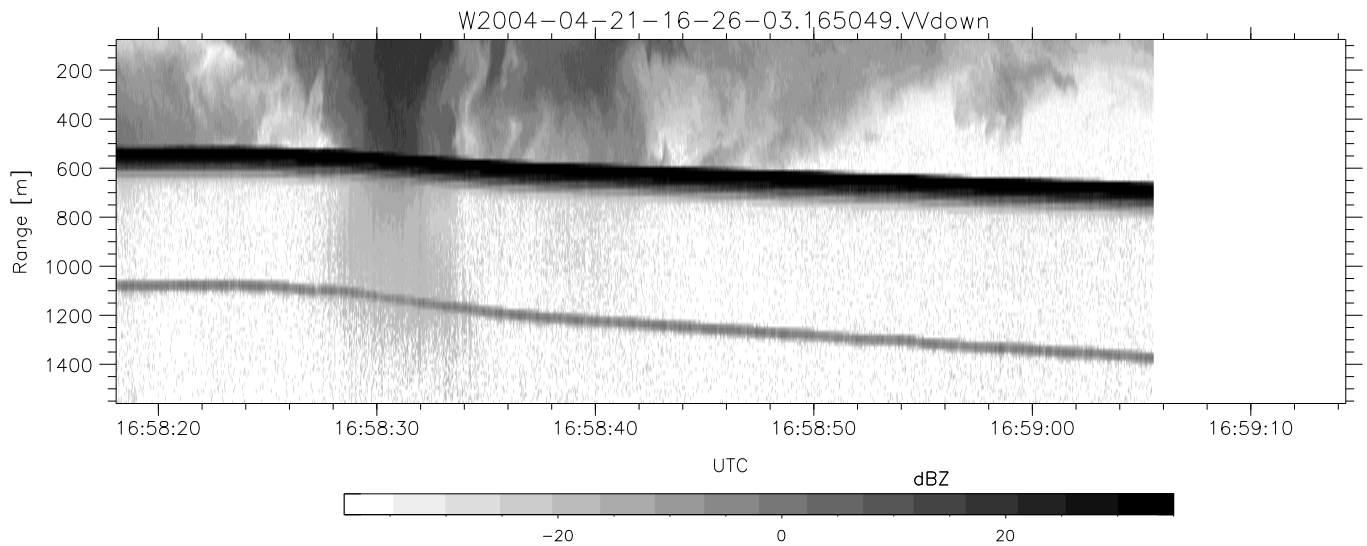
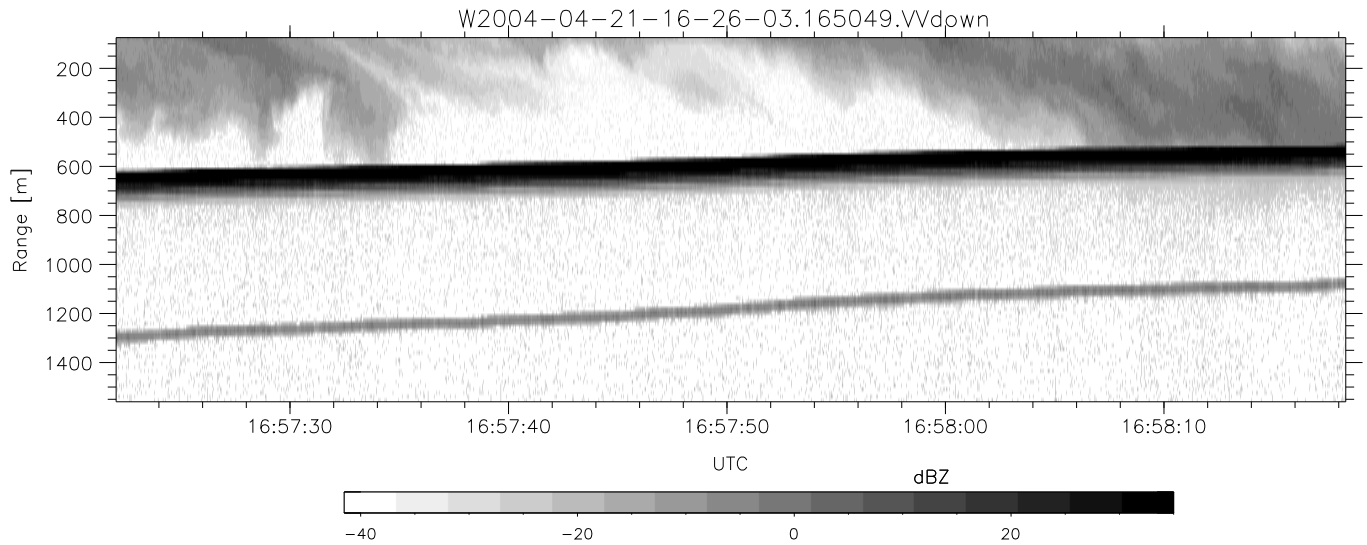
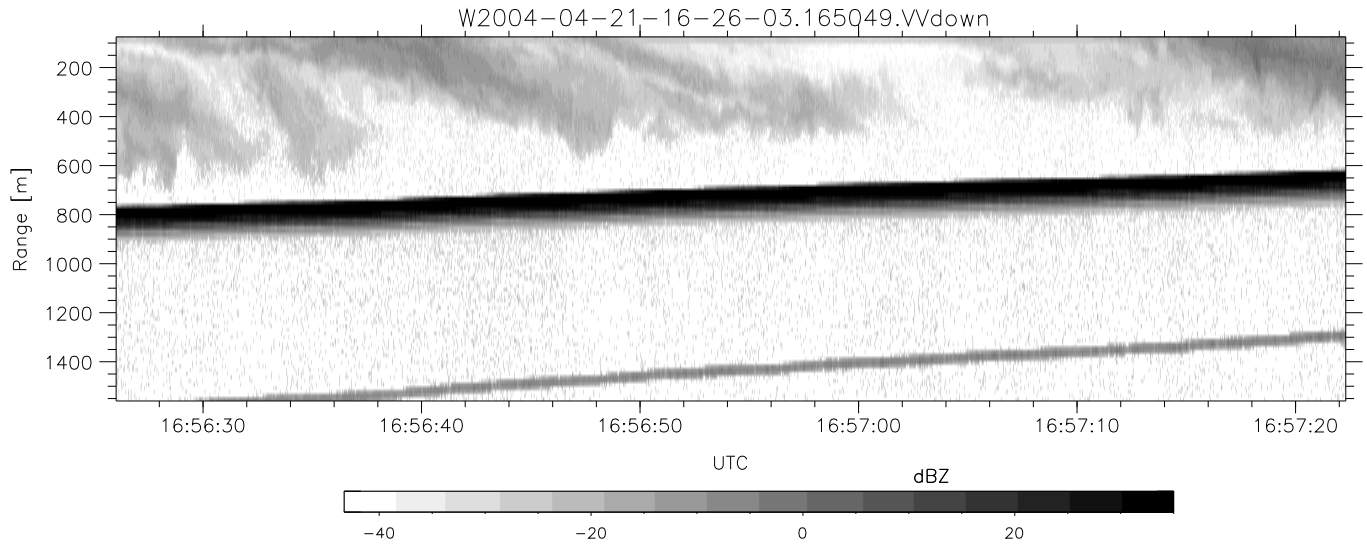
	Min	Max	Mean	Std	Varc%
hhN (dB)	-68.04	-64.44	-66.13	-76.17	9.9
vvN (dB)	-68.09	-64.57	-66.16	-76.16	10.0
hhL (dB)	-12.93	2.47	-0.63	-3.77	48.6
vvL (dB)	-0.41	6.00	5.41	-1.62	19.8
ppN (m/s)	-12.10	12.34	-0.04	4.15	
ppT (m/s)	-95.59	97.52	-0.30	32.78	
hh/vv (dB)	NaN	58.87	18.09	37.10	7966
vh/hh (dB)	NaN	-0.20	-24.35	-14.22	1031
hv/vv (dB)	NaN	-28.11	-52.06	-44.25	603.
hn_jmp (dB)			0.16		
vn_jmp (dB)			0.17		



CIFEX 2004 Data (cal/250ns+2.5/100ns-3.5/500ns: 53.0,50.0)

W2004-04-21-16-26-03 - PPMAG4, IRIG:1/0/2  
 UTC: 16:26:02.96 to 17:03:07.55, Dur: 2225s  
 TimeLngth: 2224.62s, TimeInt: 28ms (35.4pps)  
 TimeCor=-13.0s, PPS(min,max,med): 35,36,35  
 Timeint/DSPdiff(mn,min,mx):28,28,28/28,28,28  
 Prof: 52476 to 131339, NumProf(r/t): 17571/78863  
 ProcTime/Recs: 16:50:49-16:59:05/52713-70283  
 ADacqtime: 25ms; DRate: 198.4KB/s; Flags: 0, 0, 0  
 Pulse: 275ns, IFfilt: 5.0MHz; ppPol: HH HV VV  
 TxPol: HHVV, PRF: 20 10 20 10 kHz, NoiseFlg:2,2  
 Range: Delay 75m, Spacing 15m, Gates 100  
 Ave. Pulses: 84, Rng/Prof Aspect@90m/s: 5.9

	Min	Max	Mean	Std	Varc%
hhN (dB)	-68.04	-64.44	-66.13	-76.17	9.9
vvN (dB)	-68.09	-64.57	-66.16	-76.16	10.0
hhL (dB)	-12.93	2.47	-0.63	-3.77	48.6
vvL (dB)	-0.41	6.00	5.41	-1.62	19.8
ppN (m/s)	-12.10	12.34	-0.04	4.15	
ppT (m/s)	-95.59	97.52	-0.30	32.78	
hh/vv (dB)	NaN	58.87	18.09	37.10	7966
vh/hh (dB)	NaN	-0.20	-24.35	-14.22	1031
hv/vv (dB)	NaN	-28.11	-52.06	-44.25	603.
hnjmp (dB)			0.16		
vnjmp (dB)			0.17		



CIFEX 2004 Data (cal/250ns+2.5/100ns-3.5/500ns: 53.0,50.0)

W2004-04-21-16-26-03 - PPMAG4, IRIG:1/0/2  
 UTC: 16:26:02.96 to 17:03:07.55, Dur: 2225s  
 TimeLngth: 2224.62s, TimeInt: 28ms (35.4pps)  
 TimeCor=-13.0s, PPS(min,max,med): 35,36,35  
 Timeint/DSPdiff(mn,min,mx):28,28,28/28,28,28  
 Prof: 52476 to 131339, NumProf(r/t): 17571/78863  
 ProcTime/Recs: 16:50:49-16:59:05/52713-70283  
 ADacqtime: 25ms; DRate: 198.4KB/s; Flags: 0, 0, 0  
 Pulse: 275ns, IFfilt: 5.0MHz; ppPol: HH HV VV  
 TxPol: HHVV, PRF: 20 10 20 10 kHz, Noiseflg:2,2  
 Range: Delay 75m, Spacing 15m, Gates 100  
 Ave. Pulses: 84, Rng/Prof Aspect@90m/s: 5.9

	Min	Max	Mean	Std	Varc%
hhN(dB)	-68.04	-64.44	-66.13	-76.17	9.9
vvN(dB)	-68.09	-64.57	-66.16	-76.16	10.0
hhL(dB)	-12.93	2.47	-0.63	-3.77	48.6
vvL(dB)	-0.41	6.00	5.41	-1.62	19.8
ppN(m/s)	-12.10	12.34	-0.04	4.15	
ppT(m/s)	-95.59	97.52	-0.30	32.78	
hh/vv(dB)	NaN	58.87	18.09	37.10	7966
vh/hh(dB)	NaN	-0.20	-24.35	-14.22	1031
hv/vv(dB)	NaN	-28.11	-52.06	-44.25	603.
hnjmp(dB)				0.16	
vnjmp(dB)				0.17	