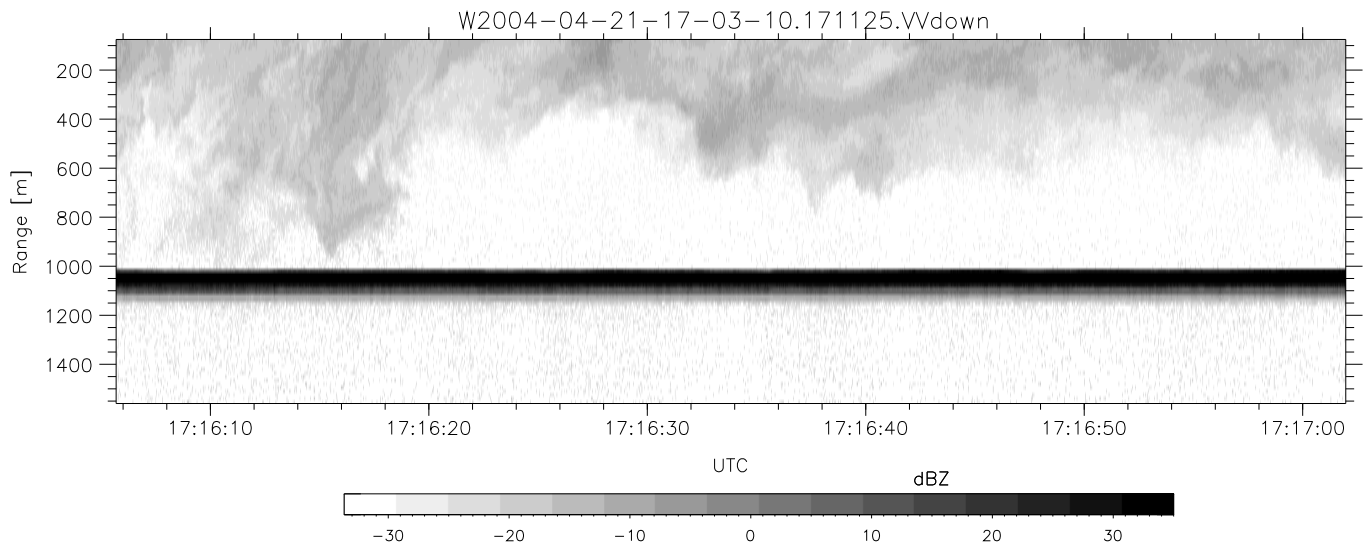
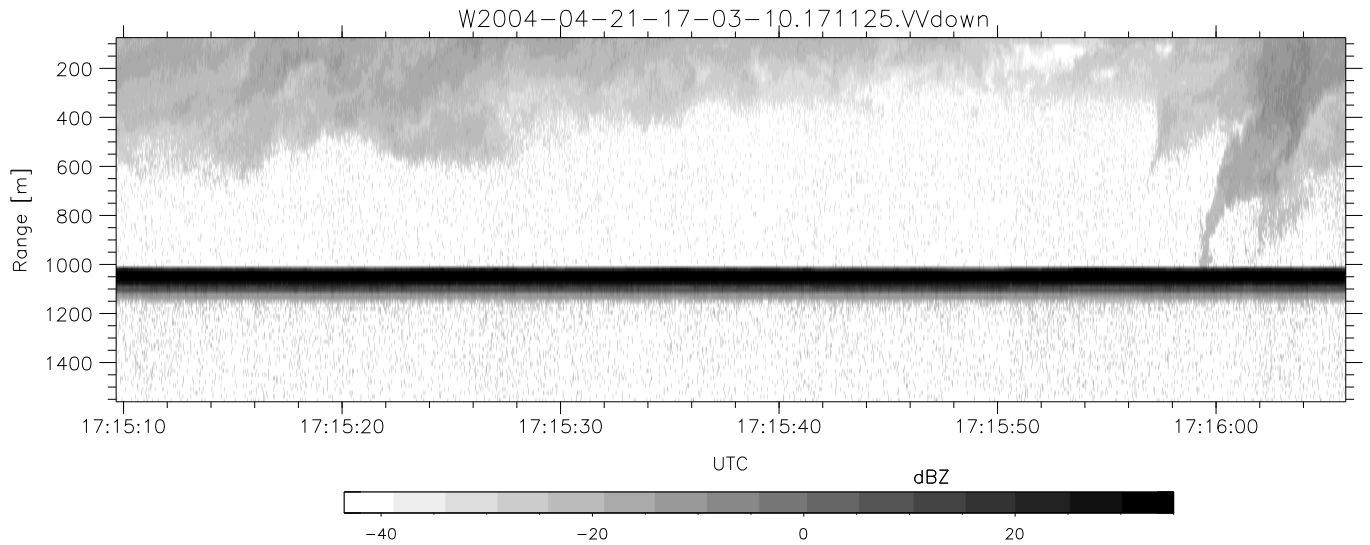
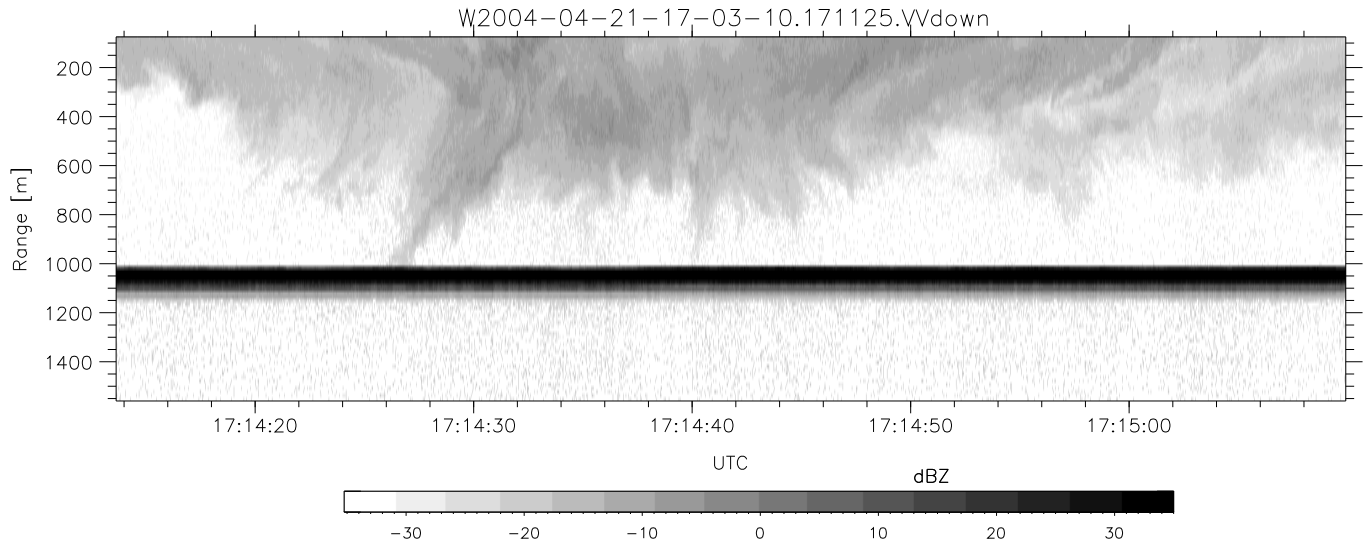


CIFEX 2004 Data (cal/250ns+2.5/100ns-3.5/500ns: 53.0,50.0)

W2004-04-21-17-03-10 - PPMAG4, IRIG:1/0/2
 UTC: 17:03:09.94 to 17:38:45.95, Dur: 2136s
 TimeLngth: 2136.01s, TimeInt: 28ms (35.4pps)
 TimeCor=-13.0s, PPS(min,max,med): 35,36,35
 Timeint/DSPdiff(mn,min,mx):28,28,41/28,28,28
 Prof: 351 to 76073, NumProf(r/t): 17571/75722
 ProcTime/Recs: 17:11:25-17:19:41/17571-35141
 ADacqtime: 25ms; DRate: 198.4KB/s; Flags: 0, 0, 0
 Pulse: 275ns, IFfilt: 5.0MHz; ppPol: HH HV VV
 TxPol: HHVV, PRF: 20 10 20 10 kHz, Noiseflg:2,4
 Range: Delay 75m, Spacing 15m, Gates 100
 Ave. Pulses: 84, Rng/Prof Aspect@90m/s: 5.9

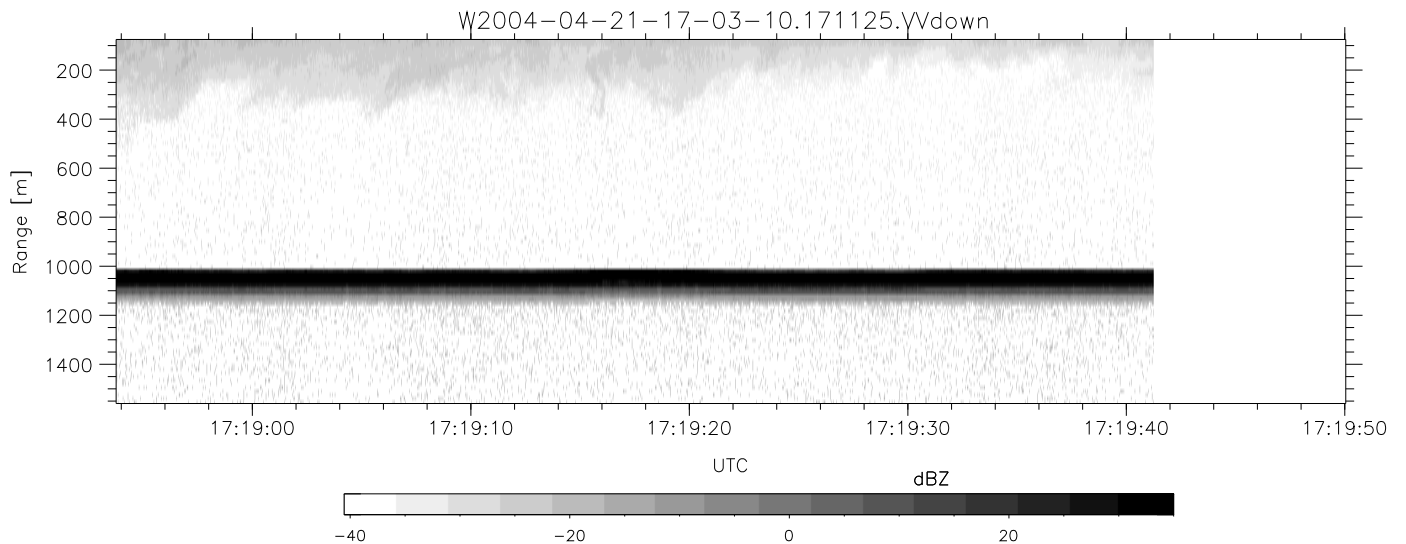
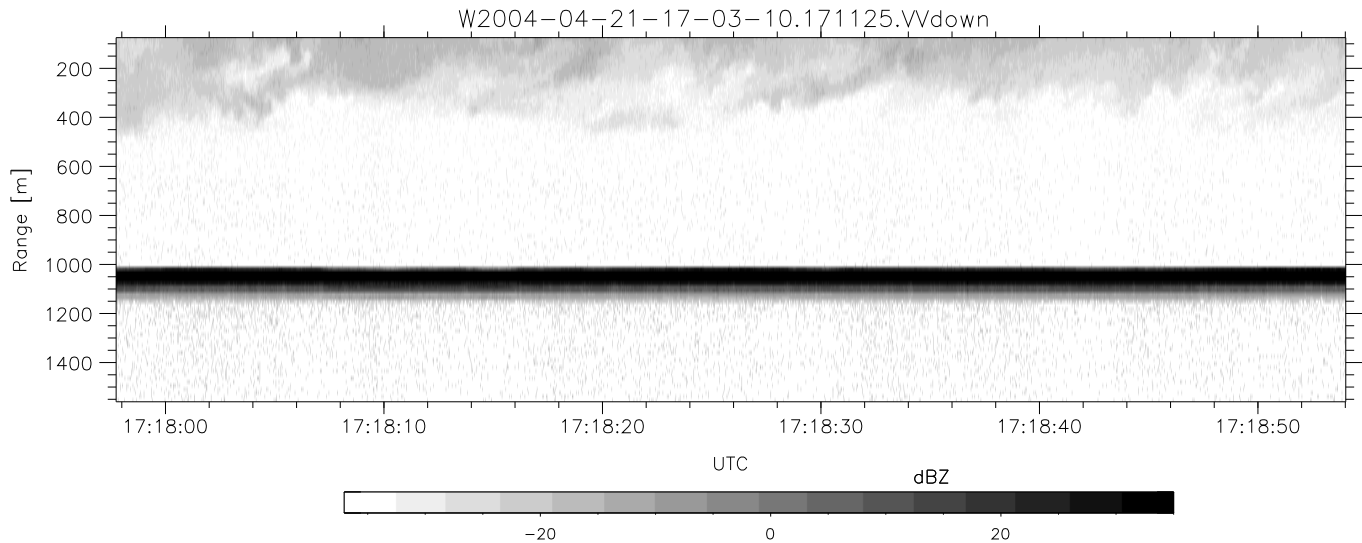
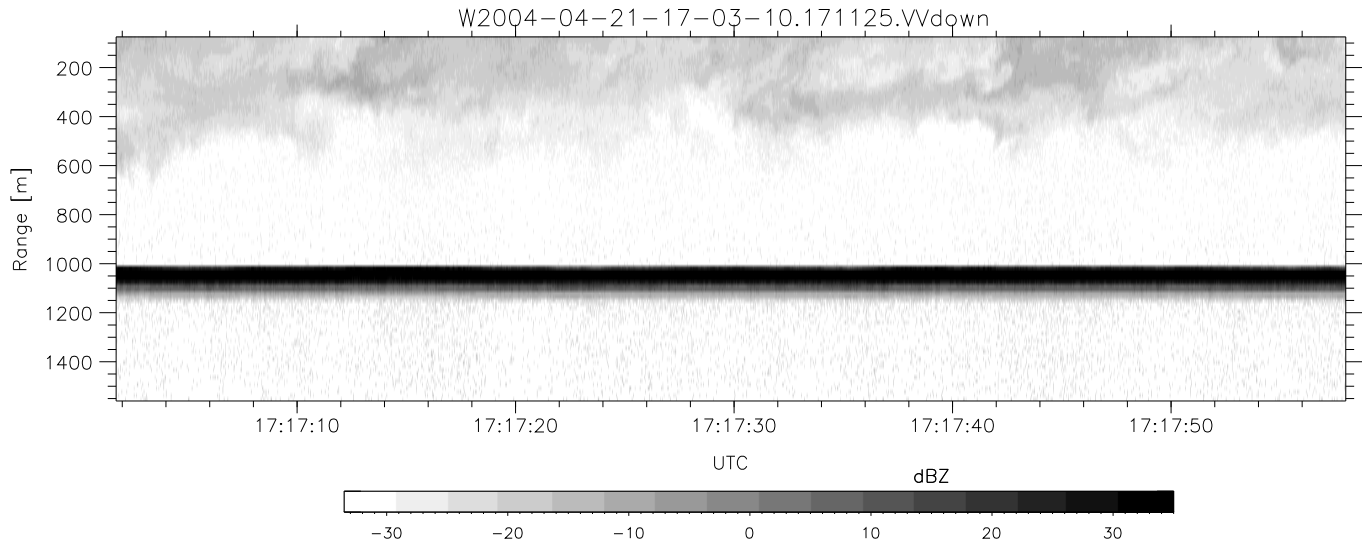
	Min	Max	Mean	Std	Varc%
hhN (dB)	-68.18	-64.85	-66.34	-76.32	10.0
vvN (dB)	-68.33	-64.79	-66.35	-76.29	10.1
hhL (dB)	-3.36	1.55	-0.54	-8.10	17.5
vvL (dB)	-1.95	5.97	3.16	-2.40	27.8
ppN (m/s)	-12.35	12.27	-0.04	4.12	
ppT (m/s)	-97.57	96.95	-0.28	32.52	
hh/vv (dB)	NaN	33.05	-1.06	13.04	2568
vh/hh (dB)	NaN	-32.44	-35.34	-37.09	66.8
hv/vv (dB)	NaN	-34.95	-59.84	-47.56	1690
hn_jmp (dB)			-0.16		
vn_jmp (dB)			-0.18		



CIFEX 2004 Data (cal/250ns+2.5/100ns-3.5/500ns: 53.0,50.0)

W2004-04-21-17-03-10 - PPMAG4, IRIG:1/0/2
 UTC: 17:03:09.94 to 17:38:45.95, Dur: 2136s
 TimeLngth: 2136.01s, TimeInt: 28ms (35.4pps)
 TimeCor=-13.0s, PPS(min,max,med): 35,36,35
 Timeint/DSPdiff(mn,min,mx):28,28,41/28,28,28
 Prof: 351 to 76073, NumProf(r/t): 17571/75722
 ProcTime/Recs: 17:11:25-17:19:41/17571-35141
 ADacqtime: 25ms; DRate: 198.4KB/s; Flags: 0, 0, 0
 Pulse: 275ns, IFfilt: 5.0MHz; ppPol: HH HV VV
 TxPol: HHVV, PRF: 20 10 20 10 kHz, Noiseflg:2,4
 Range: Delay 75m, Spacing 15m, Gates 100
 Ave. Pulses: 84, Rng/Prof Aspect@90m/s: 5.9

	Min	Max	Mean	Std	Varc%
hhN (dB)	-68.18	-64.85	-66.34	-76.32	10.0
vvN (dB)	-68.33	-64.79	-66.35	-76.29	10.1
hhL (dB)	-3.36	1.55	-0.54	-8.10	17.5
vvL (dB)	-1.95	5.97	3.16	-2.40	27.8
ppN (m/s)	-12.35	12.27	-0.04	4.12	
ppT (m/s)	-97.57	96.95	-0.28	32.52	
hh/vv (dB)	NaN	33.05	-1.06	13.04	2568
vh/hh (dB)	NaN	-32.44	-35.34	-37.09	66.8
hv/vv (dB)	NaN	-34.95	-59.84	-47.56	1690
hnjmp (dB)			-0.16		
vnjmp (dB)			-0.18		



CIFEX 2004 Data (cal/250ns+2.5/100ns-3.5/500ns: 53.0,50.0)

W2004-04-21-17-03-10 - PPMAG4, IRIG:1/0/2
 UTC: 17:03:09.94 to 17:38:45.95, Dur: 2136s
 TimeLngth: 2136.01s, TimeInt: 28ms (35.4pps)
 TimeCor=-13.0s, PPS(min,max,med): 35,36,35
 Timeint/DSPdiff(mn,min,mx):28,28,41/28,28,28
 Prof: 351 to 76073, NumProf(r/t): 17571/75722
 ProcTime/Recs: 17:11:25-17:19:41/17571-35141
 ADacqtime: 25ms; DRate: 198.4KB/s; Flags: 0, 0, 0
 Pulse: 275ns, IFilt: 5.0MHz; ppPol: HH HV VV
 TxPol: HHVV, PRF: 20 10 20 10 kHz, Noiseflg:2,4
 Range: Delay 75m, Spacing 15m, Gates 100
 Ave. Pulses: 84, Rng/Prof Aspect@90m/s: 5.9

	Min	Max	Mean	Std	Varc%
hhN (dB)	-68.18	-64.85	-66.34	-76.32	10.0
vvN (dB)	-68.33	-64.79	-66.35	-76.29	10.1
hhL (dB)	-3.36	1.55	-0.54	-8.10	17.5
vvL (dB)	-1.95	5.97	3.16	-2.40	27.8
ppN (m/s)	-12.35	12.27	-0.04	4.12	
ppT (m/s)	-97.57	96.95	-0.28	32.52	
hh/vv (dB)	NaN	33.05	-1.06	13.04	2568
vh/hh (dB)	NaN	-32.44	-35.34	-37.09	66.8
hv/vv (dB)	NaN	-34.95	-59.84	-47.56	1690
hnjmp (dB)			-0.16		
vnjmp (dB)			-0.18		