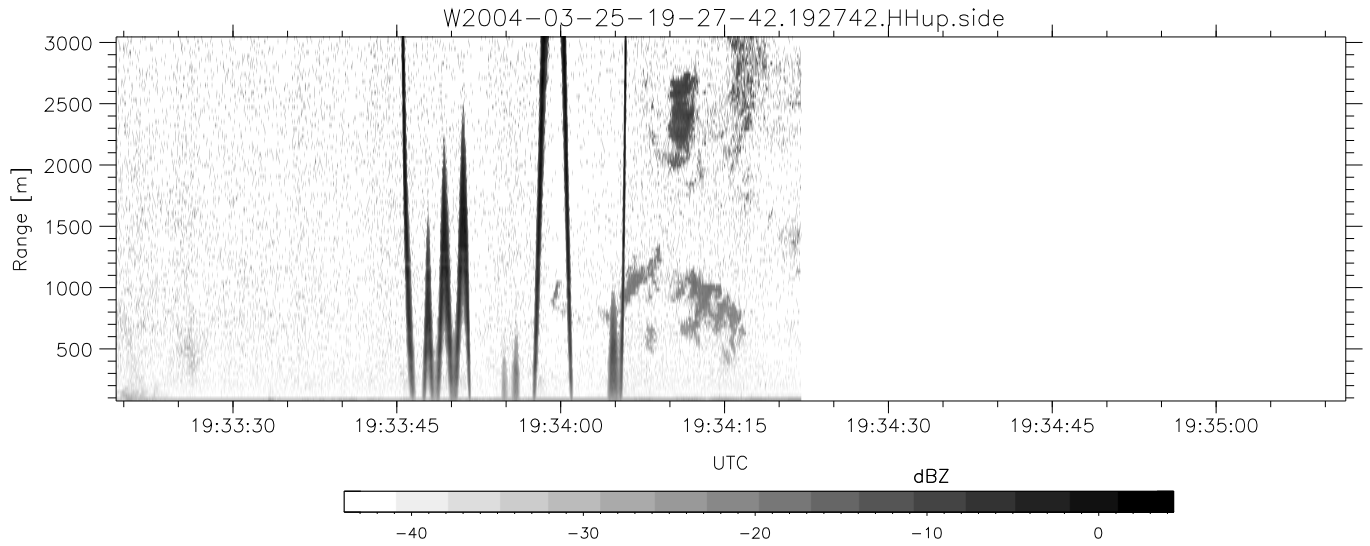


CIFEX 2004 Data (cal/250ns+2.5/100ns-3.5/500ns: 50.0,48.0)

W2004-03-25-19-27-42 - PPMAG4, IRIG:1/0/2
 UTC: 19:27:42.41 to 19:34:22.01, Dur: 400s
 TimeLngth: 399.60s, TimeInt: 28ms (35.4pps)
 TimeCor=-13.0s, PPS(min,max,med): 35,36,35
 Timeint/DSPdiff(mn,min,mx):28,28,28/28,28,28
 Prof: 18496 to 32658, NumProf(r/t): 14162/14162
 ADacqtime: 25ms; DRate: 198.4KB/s; Flags: 0, 0, 0
 Pulse: 275ns, IFfilt: 5.0MHz; ppPol: HH HV VV
 TxPol: HHVV, PRF: 20 10 20 10 kHz, NoiseFlg:4,2
 Range: Delay 75m, Spacing 30m, Gates 100
 Ave. Pulses: 84, Rng/Prof Aspect@90m/s: 11.8

	Min	Max	Mean	Std	Varc%
hhN (dB)	-67.26	-62.73	-65.30	-75.18	10.3
vvN (dB)	-67.22	-63.69	-65.46	-75.43	10.1
hhL (dB)	-21.49	0.90	-6.26	-6.68	90.7
vvL (dB)	-14.80	6.00	1.16	0.36	83.2
ppN (m/s)	-12.63	12.19	-0.07	4.12	
ppT (m/s)	-99.78	96.29	-0.54	32.54	
hh/vv (dB)	NaN	75.29	23.50	48.50	3162
vh/hh (dB)	NaN	-28.04	-38.32	-37.20	129.
hv/vv (dB)	NaN	-28.04	-44.01	-41.85	164.
hh_jmp (dB)				-0.18	
vv_jmp (dB)				-0.18	



CIFEX 2004 Data (cal/250ns+2.5/100ns-3.5/500ns: 50.0,48.0)

W2004-03-25-19-27-42 - PPMAG4, IRIG:1/0/2
 UTC: 19:27:42.41 to 19:34:22.01, Dur: 400s
 TimeLngth: 399.60s, TimeInt: 28ms (35.4pps)
 TimeCor=-13.0s, PPS(min,max,med): 35,36,35
 Timeint/DSPdiff(mn,min,mx):28,28,28/28,28,28
 Prof: 18496 to 32658, NumProf(r/t): 14162/14162
 ADacqtime: 25ms; DRate: 198.4KB/s; Flags: 0, 0, 0
 Pulse: 275ns, IFfilt: 5.0MHz; ppPol: HH HV VV
 TxPol: HHVV, PRF: 20 10 20 10 kHz, NoiseFlg:4,2
 Range: Delay 75m, Spacing 30m, Gates 100
 Ave. Pulses: 84, Rng/Prof Aspect@90m/s: 11.8

	Min	Max	Mean	Std	Varc%
hhN(dB)	-67.26	-62.73	-65.30	-75.18	10.3
vvN(dB)	-67.22	-63.69	-65.46	-75.43	10.1
hhL(dB)	-21.49	0.90	-6.26	-6.68	90.7
vvL(dB)	-14.80	6.00	1.16	0.36	83.2
ppN(m/s)	-12.63	12.19	-0.07	4.12	
ppT(m/s)	-99.78	96.29	-0.54	32.54	
hh/vv(dB)	NaN	75.29	23.50	48.50	3162
vh/hh(dB)	NaN	-28.04	-38.32	-37.20	129.
hv/vv(dB)	NaN	-28.04	-44.01	-41.85	164.
hnjmp(dB)			-0.18		
vnjmp(dB)			-0.18		