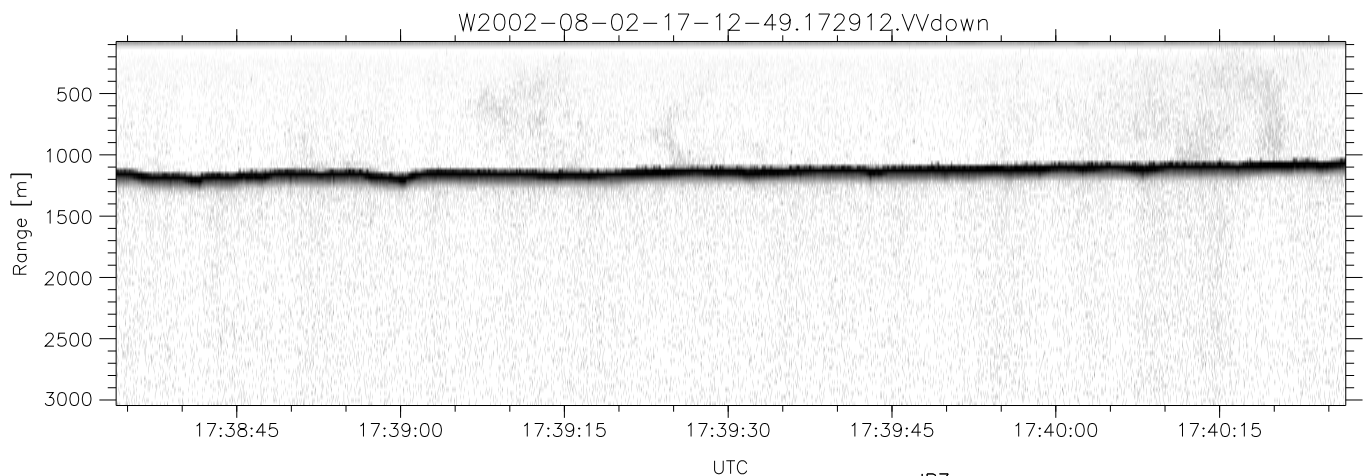
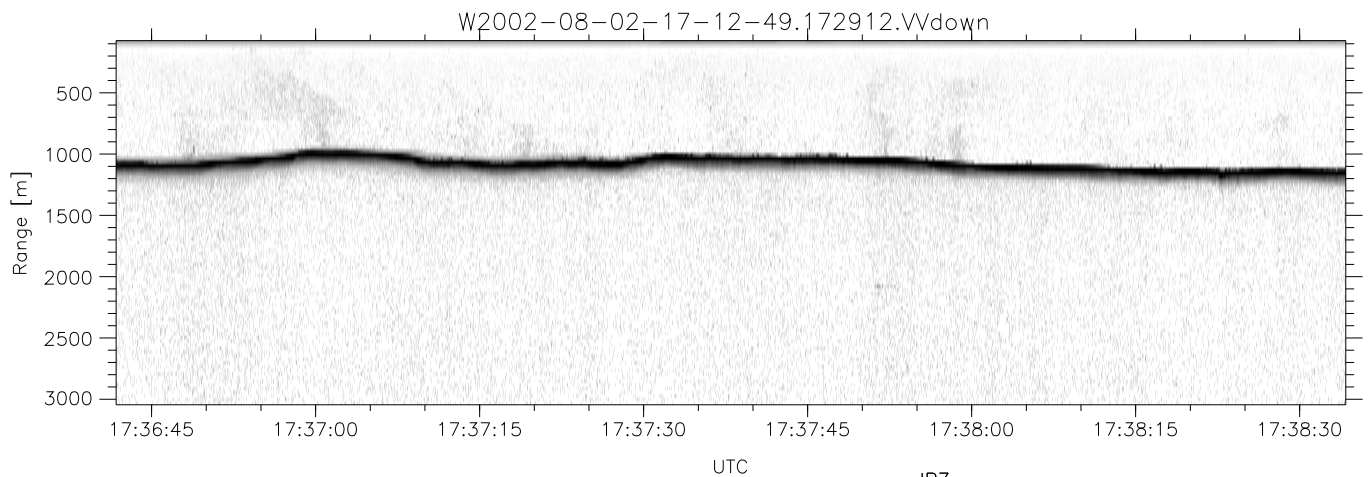
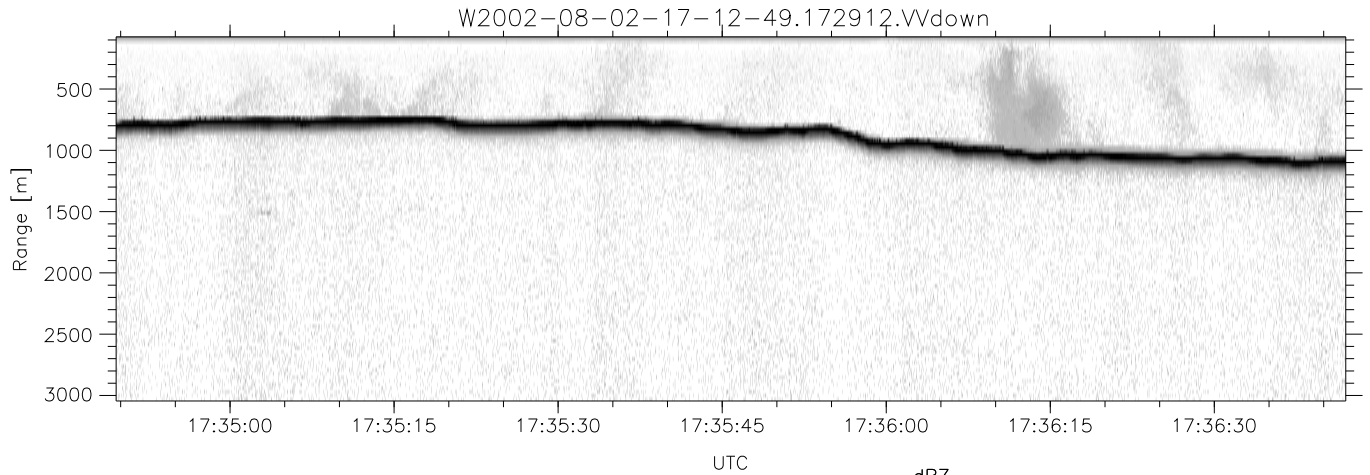


HiCu 2002 (dual-antenna config, modes 1,3,4,5,6,7) Data (cal: 55.0,50.0)

W2002-08-02-17-12-49 - SPPMAG  
 IRIG:1,UTC: 17:12:35.69 to 17:53:09.31, Dur: 2434s  
 TimeLngth: 2433.62s, TimeInt: 29ms (34.3pps)  
 TimeCor=-13.0s, DSPDif(mn,min,mx):29,28,172  
 PPS(min,max,std): 29,35,1.14  
 Prof: 219 to 83580, NumProf(t/r): 83361/34138  
 ProcTime/Recs: 17:29:12-17:45:49/34138-68275  
 MxACQtime: 26ms; DRate: 55.3KB/s; Flags: 0, 0, 0  
 Pulse: 275ns, IFfilt: 5.0MHz; ppPol: VV  
 TxPol: V, PRF: 20 kHz  
 Range: Delay 75m, Spacing 30m, Gates 100  
 Ave. Pulses: 520, Rng/Prof Aspect@90m/s: 11.4

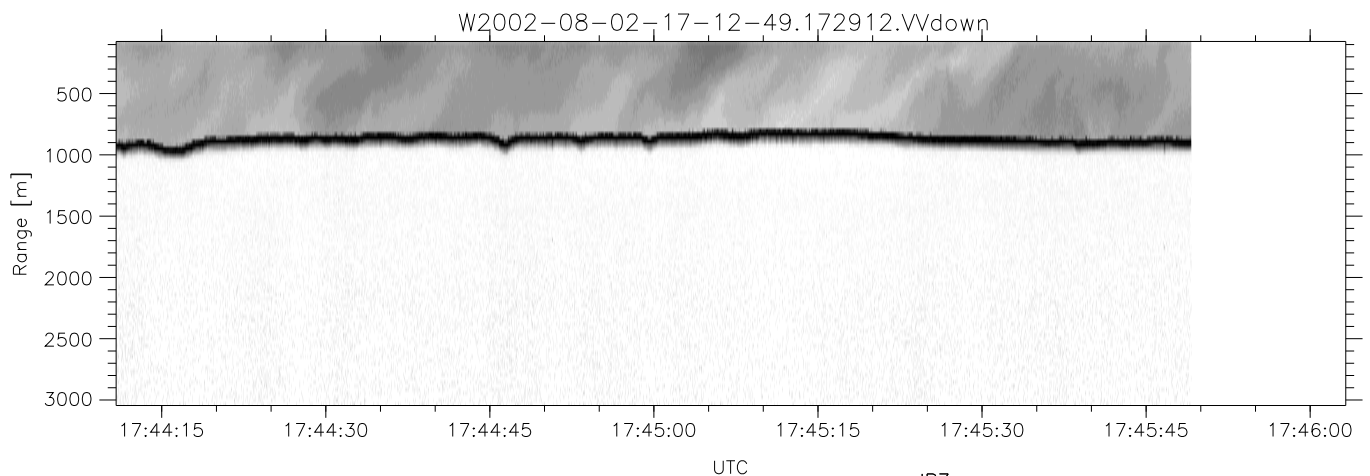
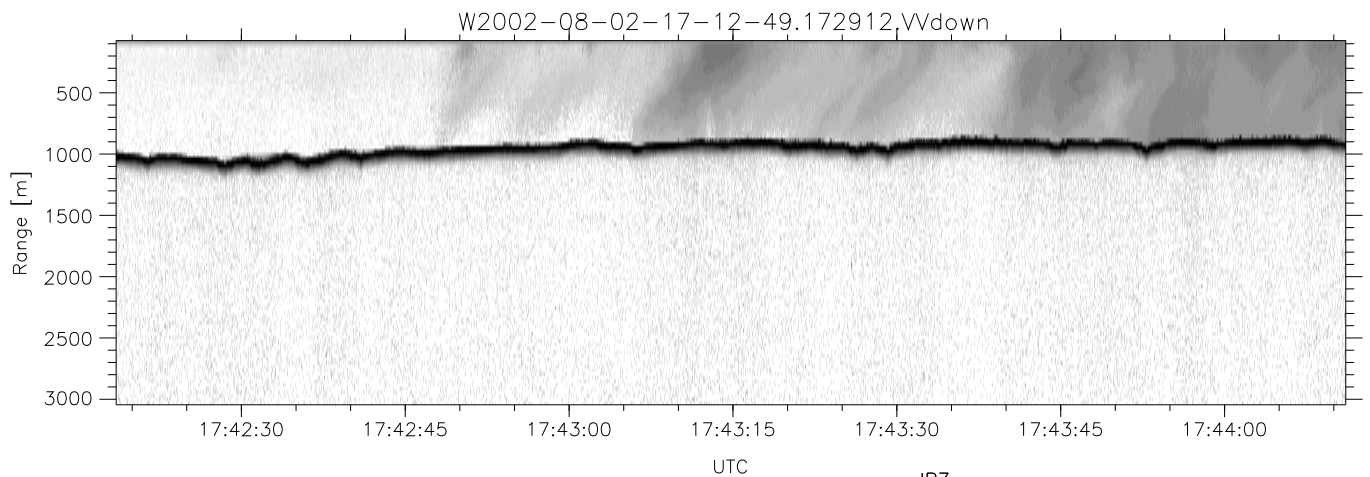
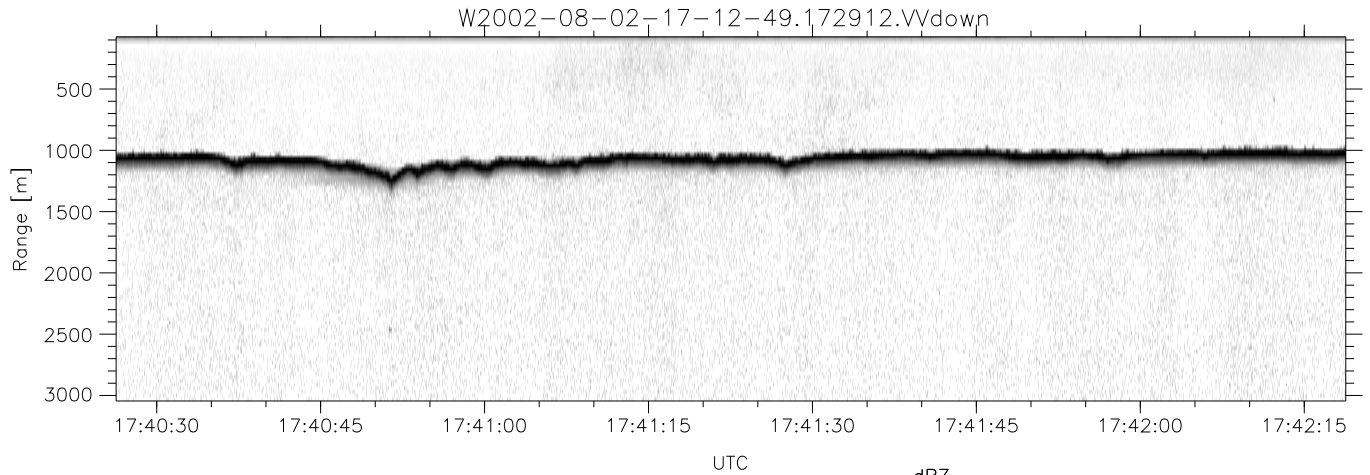
	Min	Max	Mean	Std	Varc%
hhN(dB)	-71.08	-69.43	-70.26	-84.08	4.2
vvN(dB)	-67.33	-65.54	-66.45	-79.55	4.9
vvL(dB)	-10.67	-2.91	-5.98	-11.92	25.5
hvL(dB)	-71.03	-69.44	-70.23	-84.05	4.1
ppN(m/s)	-15.80	15.80	0.01	9.10	
ppT(m/s)	-0.02	0.01	-0.00	0.00	
hv/vv(dB)	-NaN	-41.27	-NaN	-52.30	-218
hnjmp(dB)	-0.81	1.00	0.12	-12.54	5.4
vnjmp(dB)	-0.82	1.08	0.16	-12.37	5.6



HiCu 2002 (dual-antenna config, modes 1,3,4,5,6,7) Data (cal: 55.0,50.0)

W2002-08-02-17-12-49 - SPPMAG  
 IRIG:1,UTC: 17:12:35.69 to 17:53:09.31, Dur: 2434s  
 TimeLngth: 2433.62s, TimeInt: 29ms (34.3pps)  
 TimeCor=-13.0s, DSPDif(mn,min,mx):29,28,172  
 PPS(min,max,std): 29,35,1.14  
 Prof: 219 to 83580, NumProf(t/r): 83361/34138  
 ProcTime/Recs: 17:29:12-17:45:49/34138-68275  
 MxACQtime: 26ms; DRate: 55.3KB/s; Flags: 0, 0, 0  
 Pulse: 275ns, IFfilt: 5.0MHz; ppPol: VV  
 TxPol: V, PRF: 20 kHz  
 Range: Delay 75m, Spacing 30m, Gates 100  
 Ave. Pulses: 520, Rng/Prof Aspect@90m/s: 11.4

	Min	Max	Mean	Std	Varc%
hhN(dB)	-71.08	-69.43	-70.26	-84.08	4.2
vvN(dB)	-67.33	-65.54	-66.45	-79.55	4.9
vvL(dB)	-10.67	-2.91	-5.98	-11.92	25.5
hvL(dB)	-71.03	-69.44	-70.23	-84.05	4.1
ppN(m/s)	-15.80	15.80	0.01	9.10	
ppT(m/s)	-0.02	0.01	-0.00	0.00	
hv/vv(dB)	-NaN	-41.27	-NaN	-52.30	-218
hnjmp(dB)	-0.81	1.00	0.12	-12.54	5.4
vnjmp(dB)	-0.82	1.08	0.16	-12.37	5.6



HiCu 2002 (dual-antenna config, modes 1,3,4,5,6,7) Data (cal: 55.0,50.0)

W2002-08-02-17-12-49 - SPPMAG  
 IRIG:1,UTC: 17:12:35.69 to 17:53:09.31, Dur: 2434s  
 TimeLngth: 2433.62s, TimeInt: 29ms (34.3pps)  
 TimeCor=-13.0s, DSPDif(mn,min,mx):29,28,172  
 PPS(min,max,std): 29,35,1.14  
 Prof: 219 to 83580, NumProf(t/r): 83361/34138  
 ProcTime/Recs: 17:29:12-17:45:49/34138-68275  
 MxACQtime: 26ms; DRate: 55.3KB/s; Flags: 0, 0, 0  
 Pulse: 275ns, IFfilt: 5.0MHz; ppPol: VV  
 TxPol: V, PRF: 20 kHz  
 Range: Delay 75m, Spacing 30m, Gates 100  
 Ave. Pulses: 520, Rng/Prof Aspect@90m/s: 11.4

	Min	Max	Mean	Std	Varc%
hhN(dB)	-71.08	-69.43	-70.26	-84.08	4.2
vvN(dB)	-67.33	-65.54	-66.45	-79.55	4.9
vvL(dB)	-10.67	-2.91	-5.98	-11.92	25.5
hvL(dB)	-71.03	-69.44	-70.23	-84.05	4.1
ppN(m/s)	-15.80	15.80	0.01	9.10	
ppT(m/s)	-0.02	0.01	-0.00	0.00	
hv/vv(dB)	-NaN	-41.27	-NaN	-52.30	-218
hnjmp(dB)	-0.81	1.00	0.12	-12.54	5.4
vnjmp(dB)	-0.82	1.08	0.16	-12.37	5.6