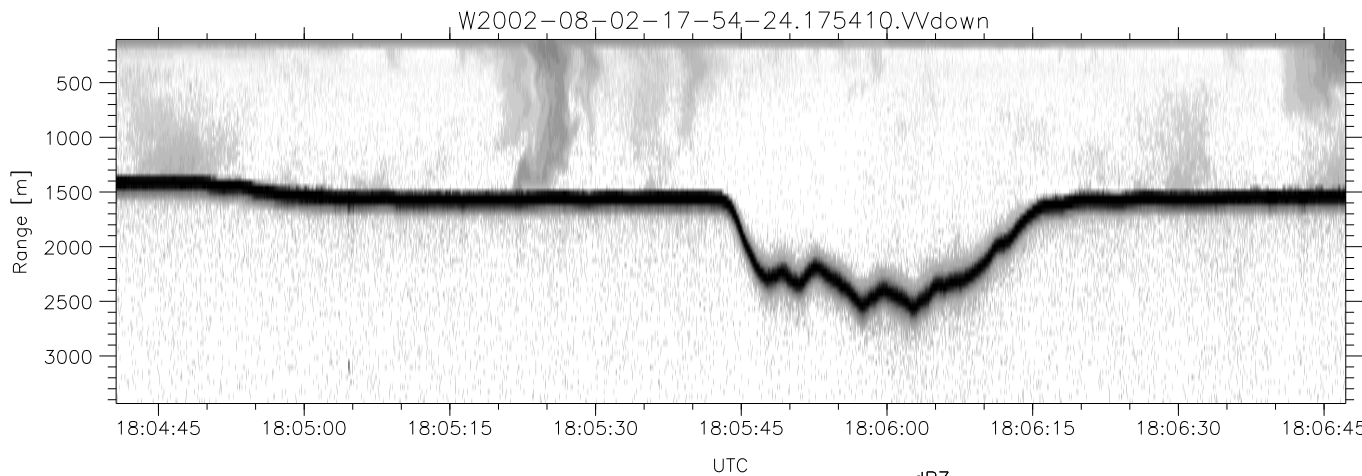
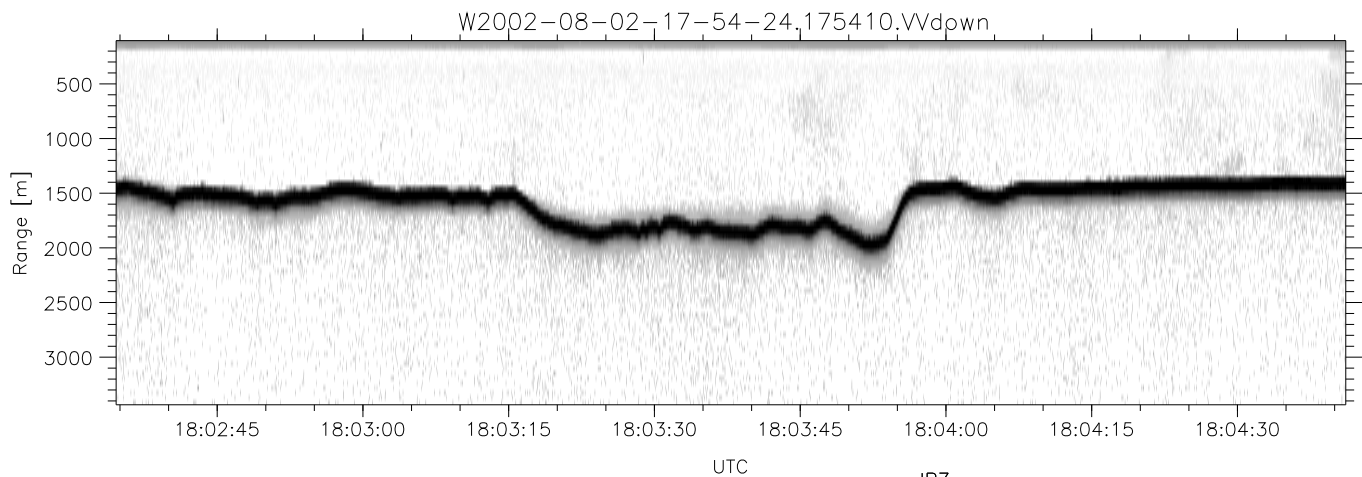
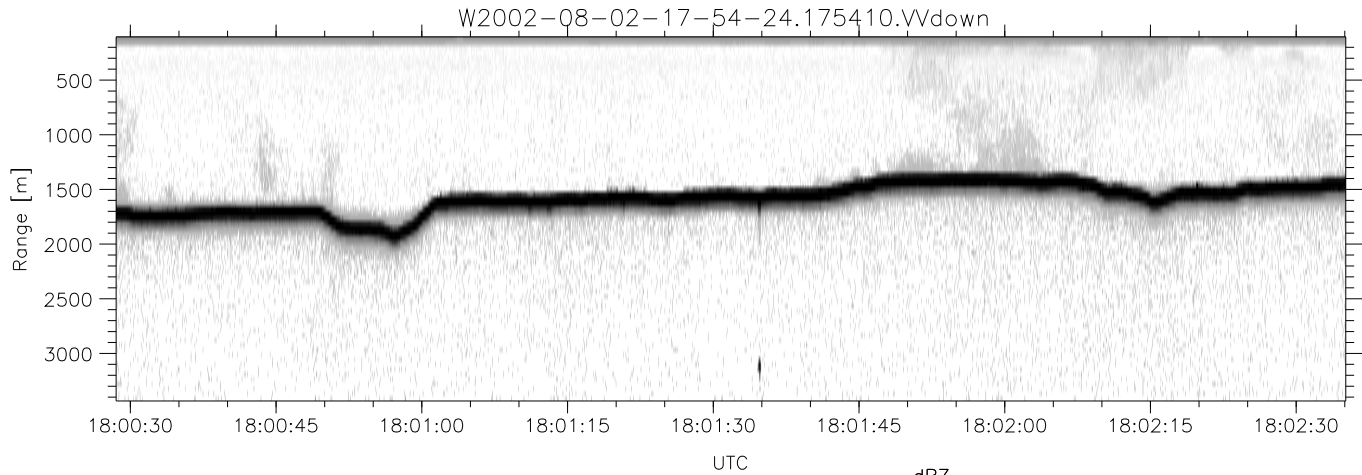


HiCu 2002 (dual-antenna config, modes 1,3,4,5,6,7) Data (cal: 55.0,50.0)

W2002-08-02-17-54-24 - SPPMAG
 IRIG:1,UTC: 17:54:10.13 to 19:32:56.59, Dur: 5926s
 TimeLngth: 5926.45s, TimeInt: 55ms (17.9pps)
 TimeCor=-13.0s, DSPDif(mn,min,mx):55,55,55
 PPS(min,max,std): 12,18,0.33
 Prof: 248 to 106443, NumProf(t/r): 106195/19203
 ProcTime/Recs: 17:54:10-18:12:01/0-19202
 MxACQtime: 52ms; DRate: 23.9KB/s; Flags: 0, 0, 0
 Pulse: 575ns, IFfilt: 2.0MHz; ppPol: VV
 TxPol: V, PRF: 10 kHz
 Range: Delay 105m, Spacing 45m, Gates 75
 Ave. Pulses: 528, Rng/Prof Aspect@90m/s: 9.0

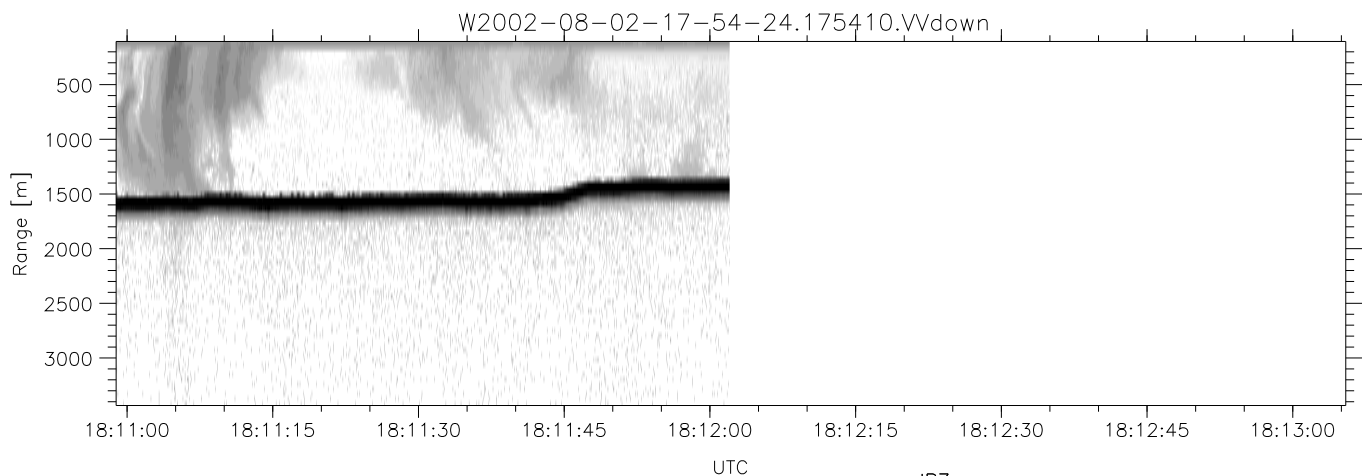
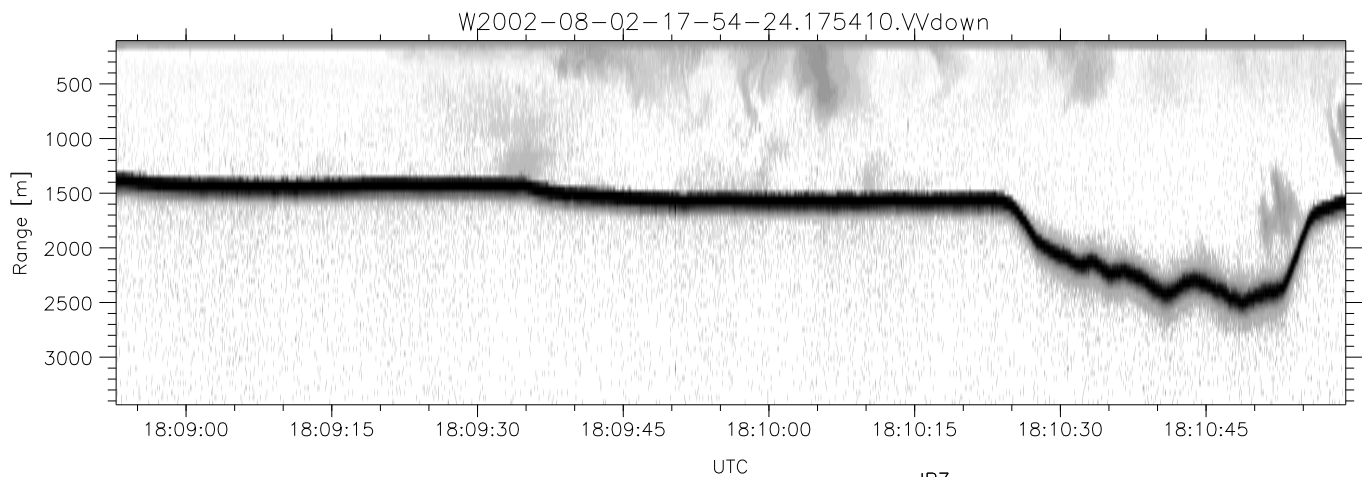
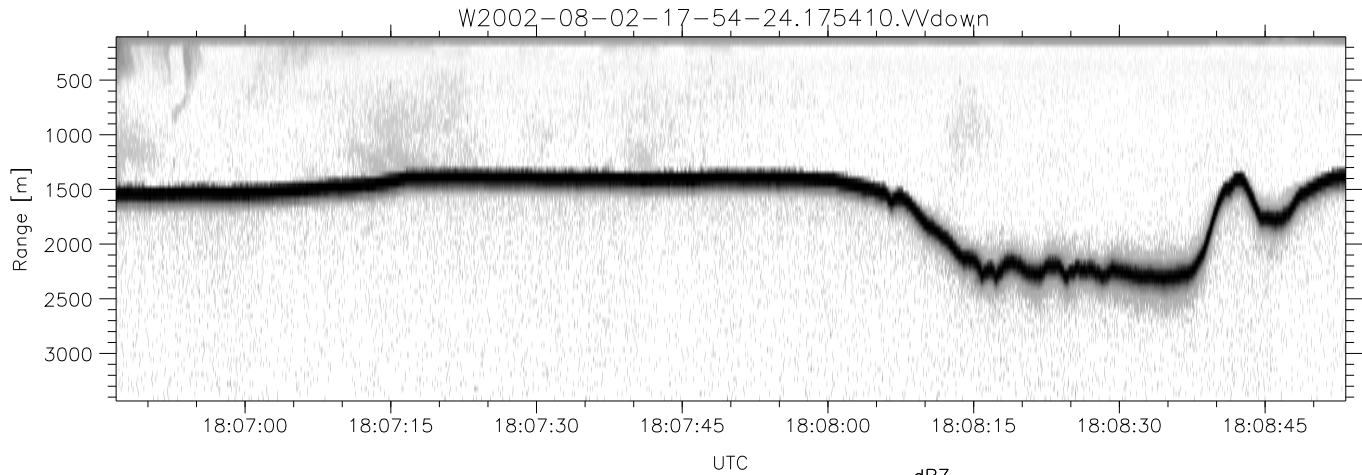
	Min	Max	Mean	Std	Varc%
hhN(dB)	-74.61	-74.03	-74.34	-91.57	1.9
vvN(dB)	-70.62	-69.89	-70.26	-86.17	2.6
vvL(dB)	-6.26	0.07	-2.61	-10.34	16.9
hvL(dB)	-74.82	-73.71	-74.29	-88.82	3.5
ppN(m/s)	-5.66	5.93	-0.01	1.59	
ppT(m/s)	-0.01	0.01	-0.00	0.00	
hv/vv(dB)	-NaN	-47.27	-81.29	-58.50	1901
hnjmp(dB)	-0.40	0.16	-0.10	-18.14	1.6
vnjmp(dB)	-0.53	0.14	-0.15	-17.11	2.0



HiCu 2002 (dual-antenna config, modes 1,3,4,5,6,7) Data (cal: 55.0,50.0)

W2002-08-02-17-54-24 - SPPMAG
 IRIG:1,UTC: 17:54:10.13 to 19:32:56.59, Dur: 5926s
 TimeLngth: 5926.45s, TimeInt: 55ms (17.9pps)
 TimeCor=-13.0s, DSPDif(mn,min,mx):55,55,55
 PPS(min,max,std): 12,18,0.33
 Prof: 248 to 106443, NumProf(t/r): 106195/19203
 ProcTime/Recs: 17:54:10-18:12:01/0-19202
 MxACQtime: 52ms; DRate: 23.9KB/s; Flags: 0, 0, 0
 Pulse: 575ns, IFfilt: 2.0MHz; ppPol: VV
 TxPol: V, PRF: 10 kHz
 Range: Delay 105m, Spacing 45m, Gates 75
 Ave. Pulses: 528, Rng/Prof Aspect@90m/s: 9.0

	Min	Max	Mean	Std	Varc%
hhN(dB)	-74.61	-74.03	-74.34	-91.57	1.9
vvN(dB)	-70.62	-69.89	-70.26	-86.17	2.6
vvL(dB)	-6.26	0.07	-2.61	-10.34	16.9
hvL(dB)	-74.82	-73.71	-74.29	-88.82	3.5
ppN(m/s)	-5.66	5.93	-0.01	1.59	
ppT(m/s)	-0.01	0.01	-0.00	0.00	
hv/vv(dB)	-NaN	-47.27	-81.29	-58.50	1901
hnjmp(dB)	-0.40	0.16	-0.10	-18.14	1.6
vnjmp(dB)	-0.53	0.14	-0.15	-17.11	2.0



HiCu 2002 (dual-antenna config, modes 1,3,4,5,6,7) Data (cal: 55.0,50.0)

W2002-08-02-17-54-24 - SPPMAG
 IRIG:1,UTC: 17:54:10.13 to 19:32:56.59, Dur: 5926s
 TimeLngth: 5926.45s, TimeInt: 55ms (17.9pps)
 TimeCor=-13.0s, DSPDif(mn,min,mx):55,55,55
 PPS(min,max,std): 12,18,0.33
 Prof: 248 to 106443, NumProf(t/r): 106195/19203
 ProcTime/Recs: 17:54:10-18:12:01/0-19202
 MxACQtime: 52ms; DRate: 23.9KB/s; Flags: 0, 0, 0
 Pulse: 575ns, IFfilt: 2.0MHz; ppPol: VV
 TxPol: V, PRF: 10 kHz
 Range: Delay 105m, Spacing 45m, Gates 75
 Ave. Pulses: 528, Rng/Prof Aspect@90m/s: 9.0

	Min	Max	Mean	Std	Varc%
hhN(dB)	-74.61	-74.03	-74.34	-91.57	1.9
vvN(dB)	-70.62	-69.89	-70.26	-86.17	2.6
vvL(dB)	-6.26	0.07	-2.61	-10.34	16.9
hvL(dB)	-74.82	-73.71	-74.29	-88.82	3.5
ppN(m/s)	-5.66	5.93	-0.01	1.59	
ppT(m/s)	-0.01	0.01	-0.00	0.00	
hv/vv(dB)	-NaN	-47.27	-81.29	-58.50	1901
hnjmp(dB)	-0.40	0.16	-0.10	-18.14	1.6
vnjmp(dB)	-0.53	0.14	-0.15	-17.11	2.0