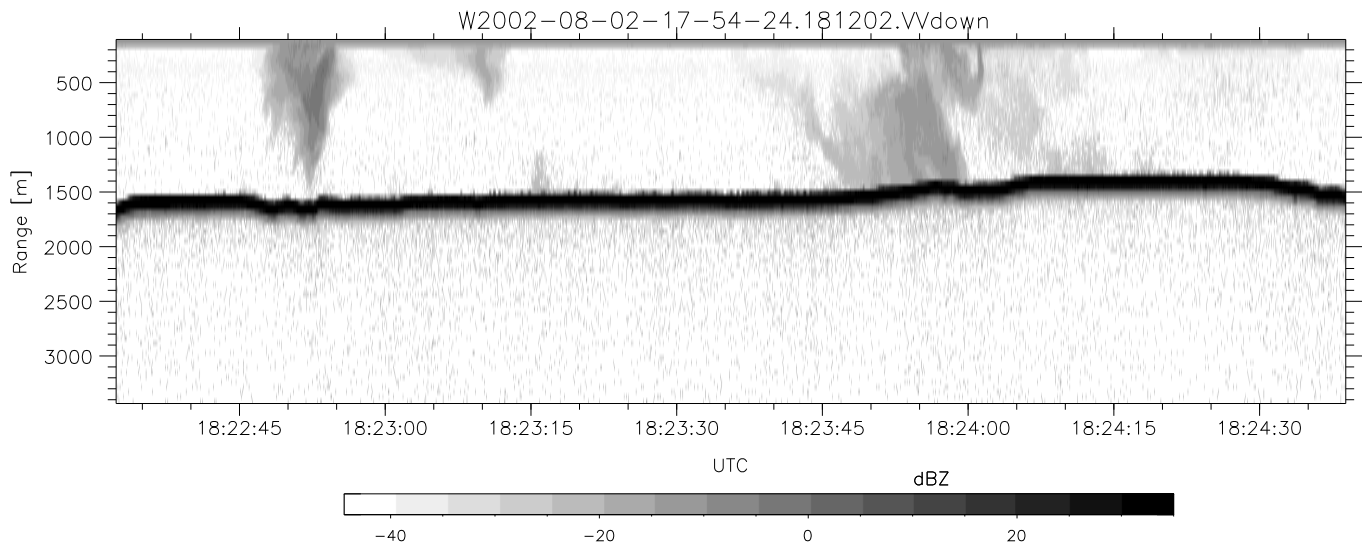
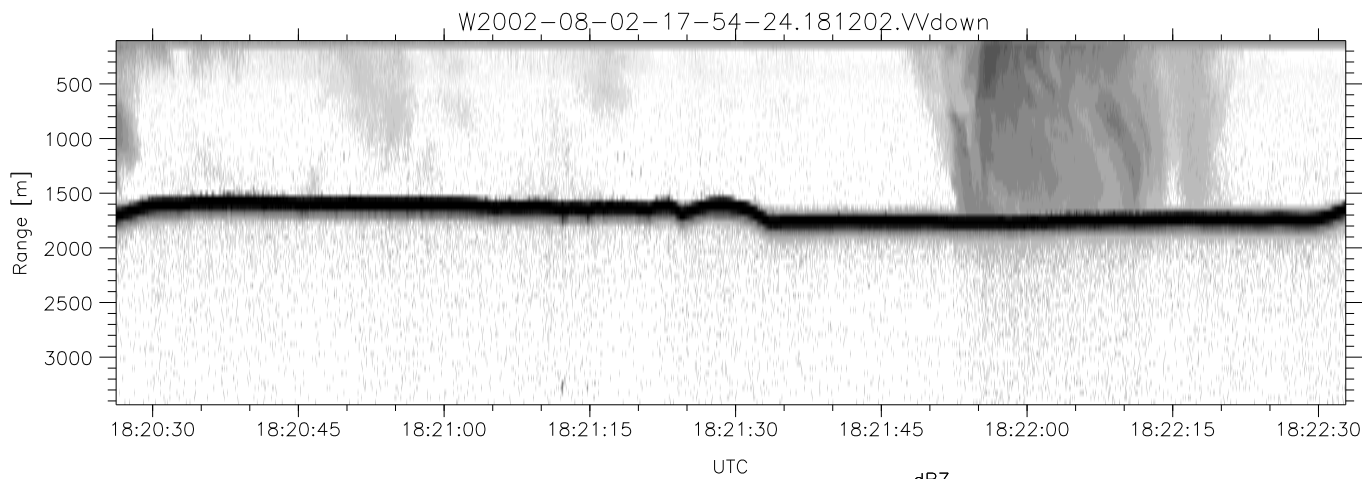
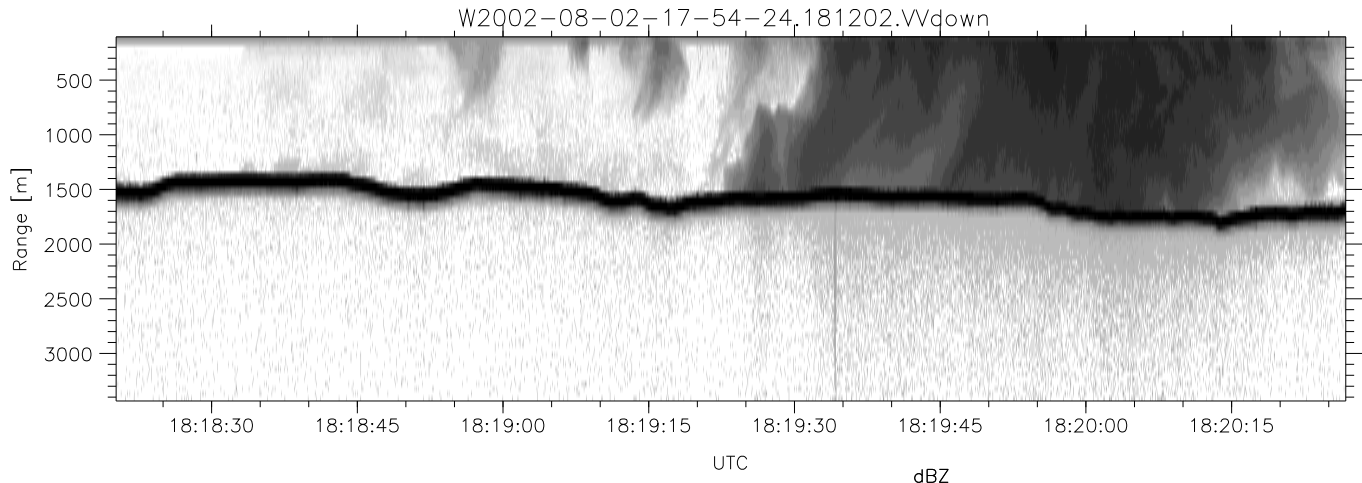


HiCu 2002 (dual-antenna config, modes 1,3,4,5,6,7) Data (cal: 55.0,50.0)

W2002-08-02-17-54-24 - SPPMAG
 IRIG:1,UTC: 17:54:10.13 to 19:32:56.59, Dur: 5926s
 TimeLngth: 5926.45s, TimeInt: 55ms (17.9pps)
 TimeCor=-13.0s, DSPDif(mn,min,mx):55,55,99
 PPS(min,max,std): 17,18,0.27
 Prof: 248 to 106443, NumProf(t/r): 106195/19203
 ProcTime/Recs: 18:12:02-18:29:53/19203-38405
 MxACQtime: 52ms; DRate: 23.9KB/s; Flags: 0, 0, 0
 Pulse: 575ns, IFfilt: 2.0MHz; ppPol: VV
 TxPol: V, PRF: 10 kHz
 Range: Delay 105m, Spacing 45m, Gates 75
 Ave. Pulses: 528, Rng/Prof Aspect@90m/s: 9.0

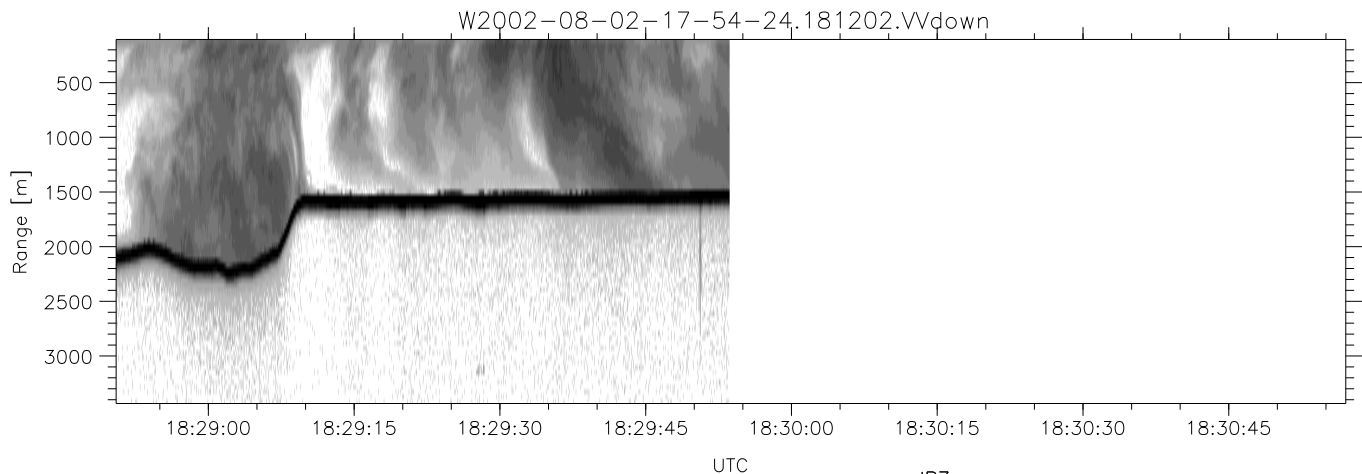
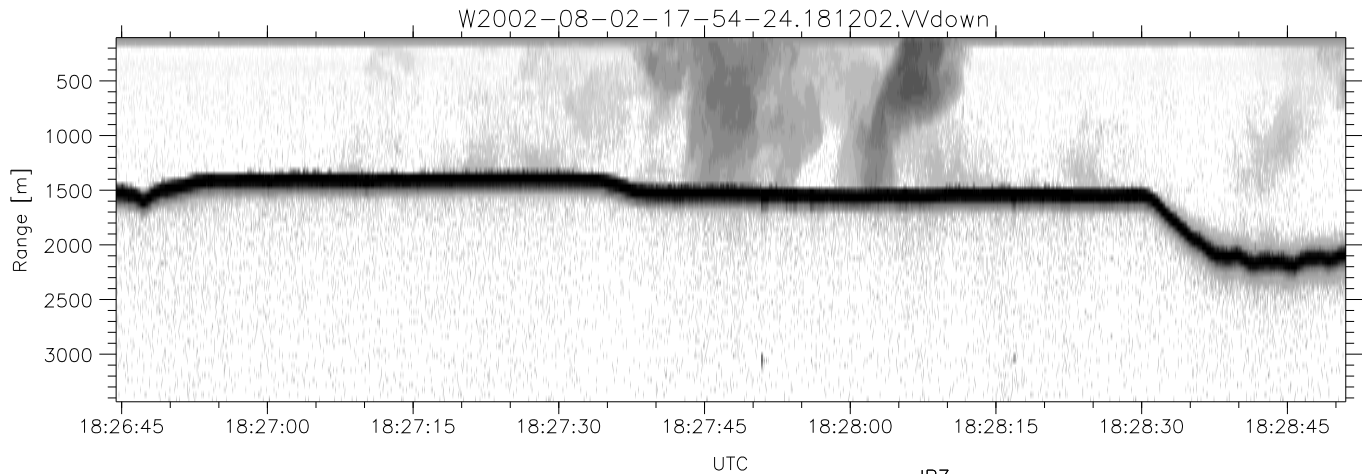
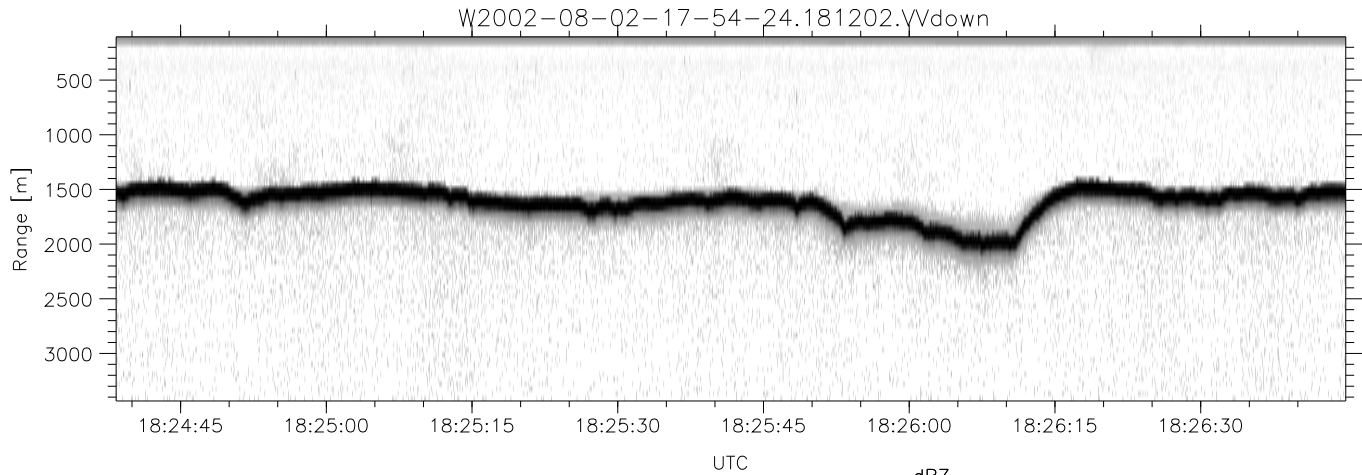
	Min	Max	Mean	Std	Varc%
hhN(dB)	-74.47	-73.91	-74.18	-91.41	1.9
vvN(dB)	-70.44	-69.28	-70.01	-83.75	4.2
vvL(dB)	-5.60	0.02	-2.63	-9.65	19.8
hvL(dB)	-74.82	-73.56	-74.14	-88.64	3.5
ppN(m/s)	-5.79	5.61	-0.00	1.60	
ppT(m/s)	-0.01	0.01	-0.00	0.00	
hv/vv(dB)	-NaN	-46.06	-72.74	-56.82	3900
hnjmp(dB)	-0.15	0.35	0.10	-17.92	1.6
vnjmp(dB)	-0.18	0.50	0.16	-16.86	2.0



HiCu 2002 (dual-antenna config, modes 1,3,4,5,6,7) Data (cal: 55.0,50.0)

W2002-08-02-17-54-24 - SPPMAG
 IRIG:1,UTC: 17:54:10.13 to 19:32:56.59, Dur: 5926s
 TimeLngth: 5926.45s, TimeInt: 55ms (17.9pps)
 TimeCor=-13.0s, DSPDif(mn,min,mx):55,55,99
 PPS(min,max,std): 17,18,0.27
 Prof: 248 to 106443, NumProf(t/r): 106195/19203
 ProcTime/Recs: 18:12:02-18:29:53/19203-38405
 MxACQtime: 52ms; DRate: 23.9KB/s; Flags: 0, 0, 0
 Pulse: 575ns, IFfilt: 2.0MHz; ppPol: VV
 TxPol: V, PRF: 10 kHz
 Range: Delay 105m, Spacing 45m, Gates 75
 Ave. Pulses: 528, Rng/Prof Aspect@90m/s: 9.0

	Min	Max	Mean	Std	Varc%
hhN(dB)	-74.47	-73.91	-74.18	-91.41	1.9
vvN(dB)	-70.44	-69.28	-70.01	-83.75	4.2
vvL(dB)	-5.60	0.02	-2.63	-9.65	19.8
hvL(dB)	-74.82	-73.56	-74.14	-88.64	3.5
ppN(m/s)	-5.79	5.61	-0.00	1.60	
ppT(m/s)	-0.01	0.01	-0.00	0.00	
hv/vv(dB)	-NaN	-46.06	-72.74	-56.82	3900
hnjmp(dB)	-0.15	0.35	0.10	-17.92	1.6
vnjmp(dB)	-0.18	0.50	0.16	-16.86	2.0



HiCu 2002 (dual-antenna config, modes 1,3,4,5,6,7) Data (cal: 55.0,50.0)

W2002-08-02-17-54-24 - SPPMAG
 IRIG:1,UTC: 17:54:10.13 to 19:32:56.59, Dur: 5926s
 TimeLngth: 5926.45s, TimeInt: 55ms (17.9pps)
 TimeCor=-13.0s, DSPDif(mn,min,mx):55,55,99
 PPS(min,max,std): 17,18,0.27
 Prof: 248 to 106443, NumProf(t/r): 106195/19203
 ProcTime/Recs: 18:12:02-18:29:53/19203-38405
 MxACQtime: 52ms; DRate: 23.9KB/s; Flags: 0, 0, 0
 Pulse: 575ns, IFfilt: 2.0MHz; ppPol: VV
 TxPol: V, PRF: 10 kHz
 Range: Delay 105m, Spacing 45m, Gates 75
 Ave. Pulses: 528, Rng/Prof Aspect@90m/s: 9.0

	Min	Max	Mean	Std	Varc%
hhN(dB)	-74.47	-73.91	-74.18	-91.41	1.9
vvN(dB)	-70.44	-69.28	-70.01	-83.75	4.2
vvL(dB)	-5.60	0.02	-2.63	-9.65	19.8
hvL(dB)	-74.82	-73.56	-74.14	-88.64	3.5
ppN(m/s)	-5.79	5.61	-0.00	1.60	
ppT(m/s)	-0.01	0.01	-0.00	0.00	
hv/vv(dB)	-NaN	-46.06	-72.74	-56.82	3900
hnjmp(dB)	-0.15	0.35	0.10	-17.92	1.6
vnjmp(dB)	-0.18	0.50	0.16	-16.86	2.0