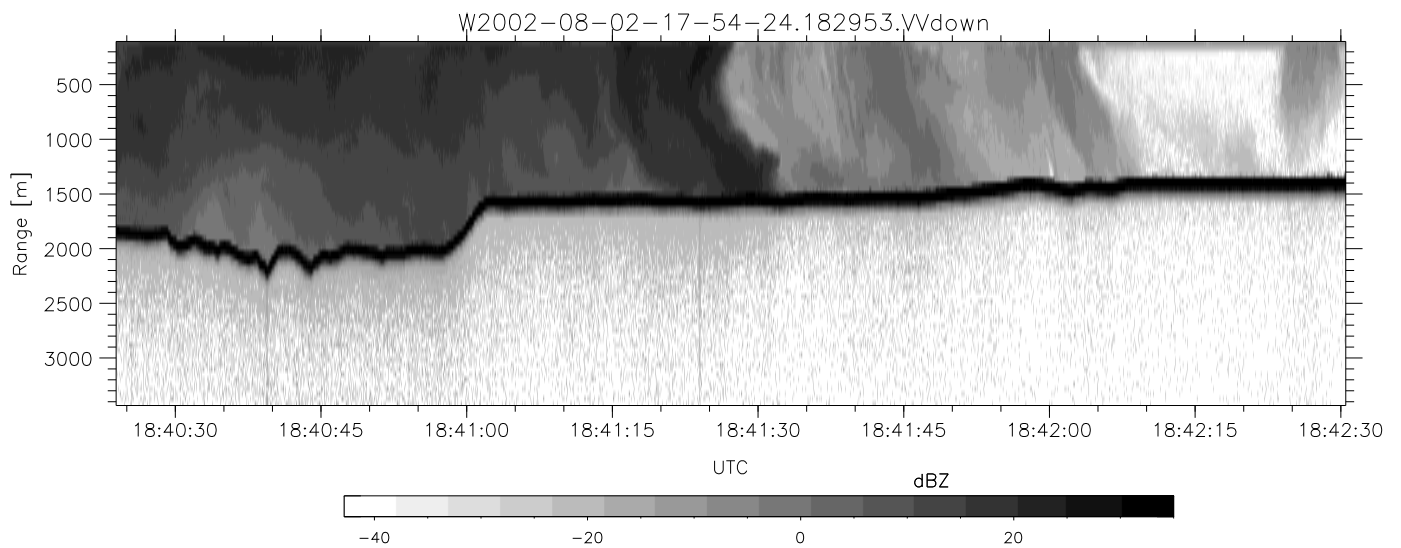
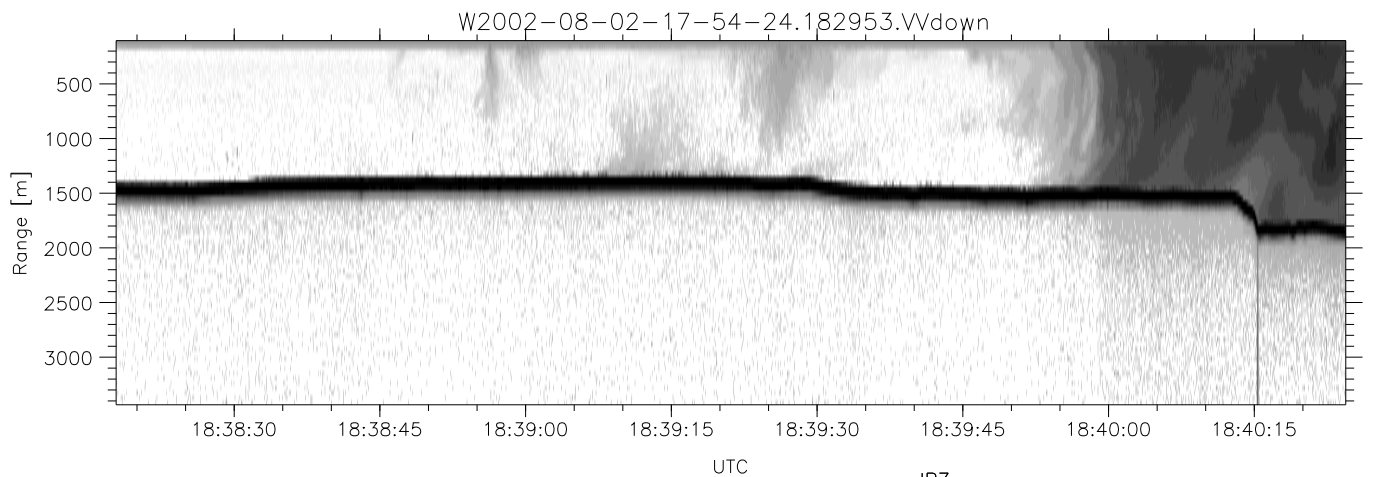
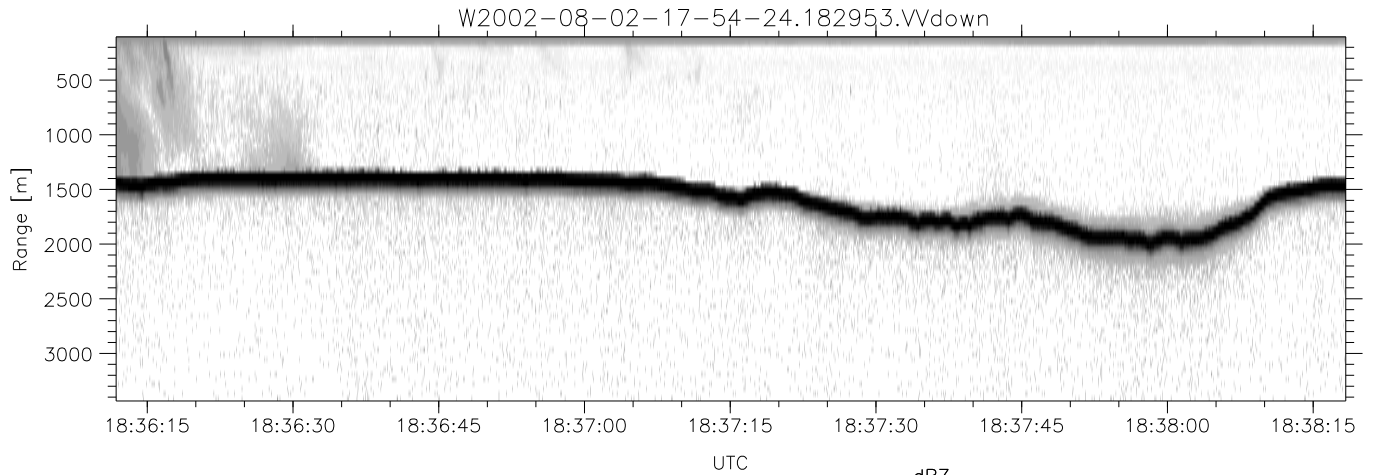


HiCu 2002 (dual-antenna config, modes 1,3,4,5,6,7) Data (cal: 55.0,50.0)

W2002-08-02-17-54-24 - SPPMAG
 IRIG:1,UTC: 17:54:10.13 to 19:32:56.59, Dur: 5926s
 TimeLngth: 5926.45s, TimeInt: 55ms (17.9pps)
 TimeCor=-13.0s, DSPDif(mn,min,mx):55,55,55
 PPS(min,max,std): 17,18,0.27
 Prof: 248 to 106443, NumProf(t/r): 106195/19203
 ProcTime/Recs: 18:29:53-18:47:45/38406-57608
 MxACQtime: 52ms; DRate: 23.9KB/s; Flags: 0, 0, 0
 Pulse: 575ns, IFfilt: 2.0MHz; ppPol: VV
 TxPol: V, PRF: 10 kHz
 Range: Delay 105m, Spacing 45m, Gates 75
 Ave. Pulses: 528, Rng/Prof Aspect@90m/s: 9.0

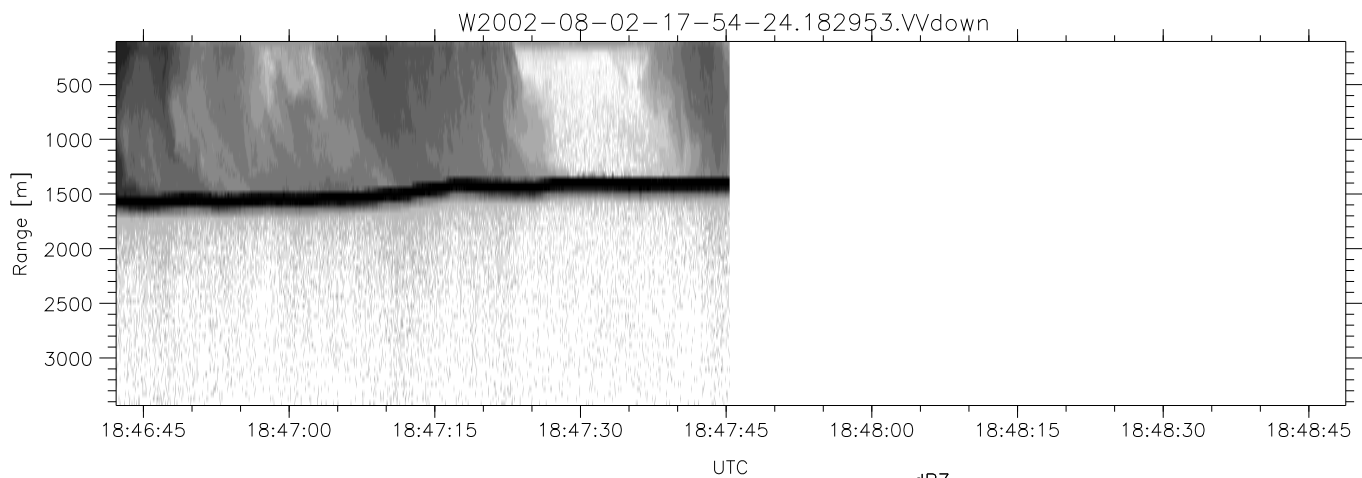
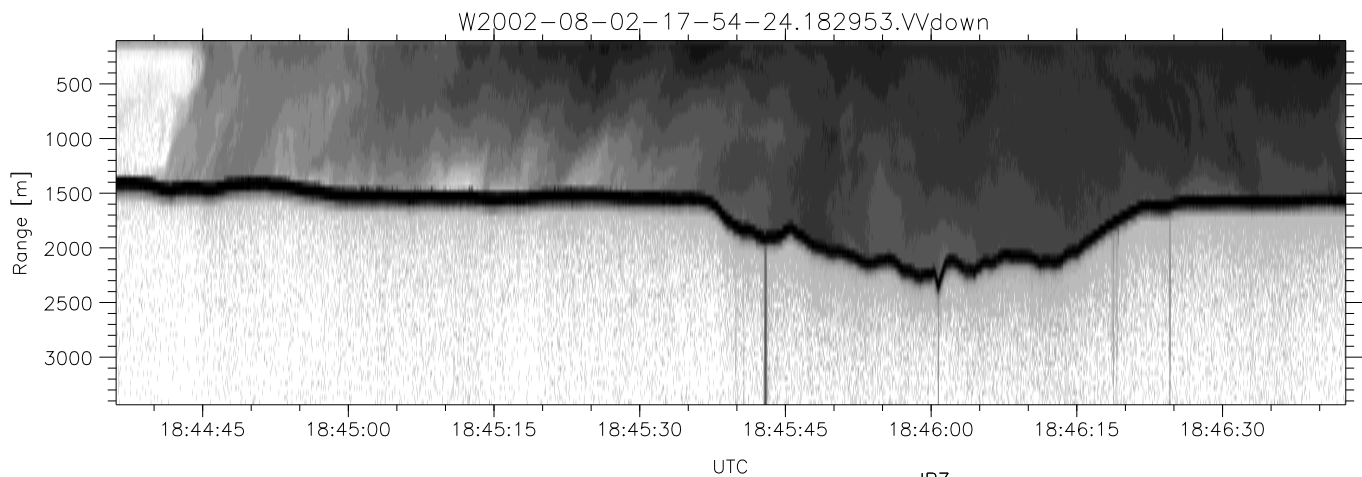
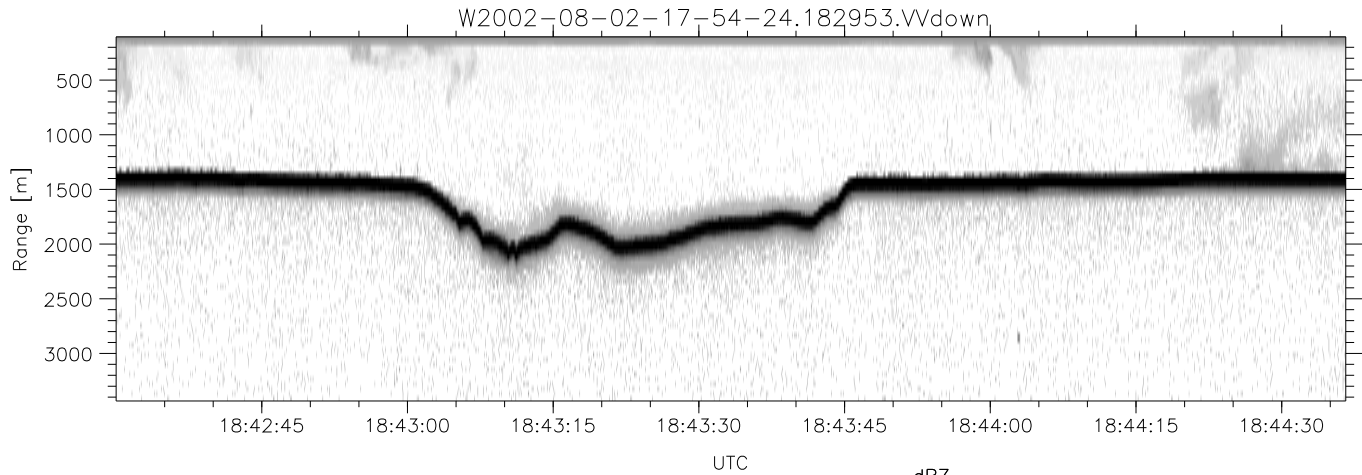
	Min	Max	Mean	Std	Varc%
hhN(dB)	-74.34	-73.76	-74.05	-91.49	1.8
vvN(dB)	-76.09	-53.72	-69.44	-67.48	156.
vvL(dB)	-49.57	0.34	-2.58	-7.36	33.3
hvL(dB)	-74.61	-73.40	-74.00	-88.55	3.5
ppN(m/s)	-6.85	5.88	-0.00	1.59	
ppT(m/s)	-0.14	0.10	-0.00	0.00	
hv/vv(dB)	-NaN	-46.11	-65.94	-56.25	930.
hnjmp(dB)	-0.37	0.14	-0.10	-18.12	1.6
vnjmp(dB)	-21.55	19.69	-0.04	0.52	113.



HiCu 2002 (dual-antenna config, modes 1,3,4,5,6,7) Data (cal: 55.0,50.0)

W2002-08-02-17-54-24 - SPPMAG
 IRIG:1,UTC: 17:54:10.13 to 19:32:56.59, Dur: 5926s
 TimeLngth: 5926.45s, TimeInt: 55ms (17.9pps)
 TimeCor=-13.0s, DSPDif(mn,min,mx):55,55,55
 PPS(min,max,std): 17,18,0.27
 Prof: 248 to 106443, NumProf(t/r): 106195/19203
 ProcTime/Recs: 18:29:53-18:47:45/38406-57608
 MxACQtime: 52ms; DRate: 23.9KB/s; Flags: 0, 0, 0
 Pulse: 575ns, IFfilt: 2.0MHz; ppPol: VV
 TxPol: V, PRF: 10 kHz
 Range: Delay 105m, Spacing 45m, Gates 75
 Ave. Pulses: 528, Rng/Prof Aspect@90m/s: 9.0

	Min	Max	Mean	Std	Varc%
hhN(dB)	-74.34	-73.76	-74.05	-91.49	1.8
vvN(dB)	-76.09	-53.72	-69.44	-67.48	156.
vvL(dB)	-49.57	0.34	-2.58	-7.36	33.3
hvL(dB)	-74.61	-73.40	-74.00	-88.55	3.5
ppN(m/s)	-6.85	5.88	-0.00	1.59	
ppT(m/s)	-0.14	0.10	-0.00	0.00	
hv/vv(dB)	-NaN	-46.11	-65.94	-56.25	930.
hnjmp(dB)	-0.37	0.14	-0.10	-18.12	1.6
vnjmp(dB)	-21.55	19.69	-0.04	0.52	113.



HiCu 2002 (dual-antenna config, modes 1,3,4,5,6,7) Data (cal: 55.0,50.0)

W2002-08-02-17-54-24 - SPPMAG
 IRIG:1,UTC: 17:54:10.13 to 19:32:56.59, Dur: 5926s
 TimeLngth: 5926.45s, TimeInt: 55ms (17.9pps)
 TimeCor=-13.0s, DSPDif(mn,min,mx):55,55,55
 PPS(min,max,std): 17,18,0.27
 Prof: 248 to 106443, NumProf(t/r): 106195/19203
 ProcTime/Recs: 18:29:53-18:47:45/38406-57608
 MxACQtime: 52ms; DRate: 23.9KB/s; Flags: 0, 0, 0
 Pulse: 575ns, IFfilt: 2.0MHz; ppPol: VV
 TxPol: V, PRF: 10 kHz
 Range: Delay 105m, Spacing 45m, Gates 75
 Ave. Pulses: 528, Rng/Prof Aspect@90m/s: 9.0

	Min	Max	Mean	Std	Varc%
hhN(dB)	-74.34	-73.76	-74.05	-91.49	1.8
vvN(dB)	-76.09	-53.72	-69.44	-67.48	156.
vvL(dB)	-49.57	0.34	-2.58	-7.36	33.3
hvL(dB)	-74.61	-73.40	-74.00	-88.55	3.5
ppN(m/s)	-6.85	5.88	-0.00	1.59	
ppT(m/s)	-0.14	0.10	-0.00	0.00	
hv/vv(dB)	-NaN	-46.11	-65.94	-56.25	930.
hnjmp(dB)	-0.37	0.14	-0.10	-18.12	1.6
vnjmp(dB)	-21.55	19.69	-0.04	0.52	113.