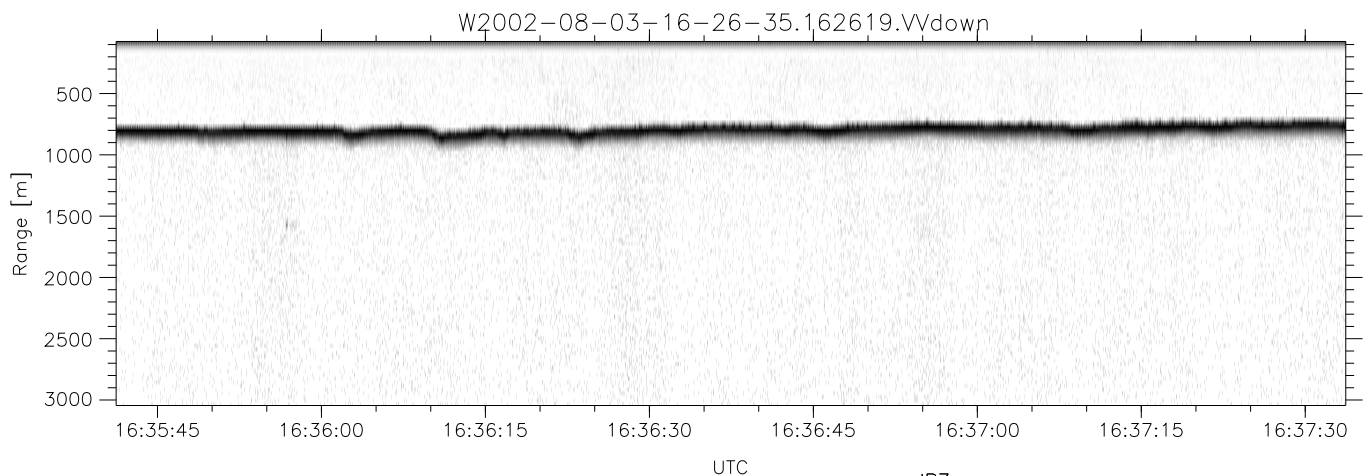
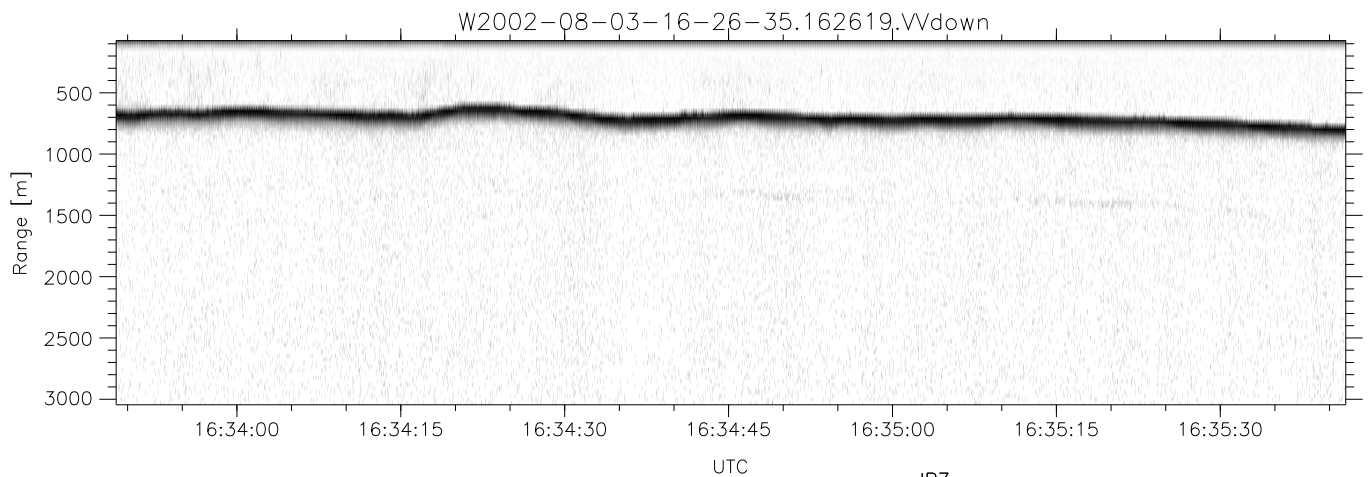
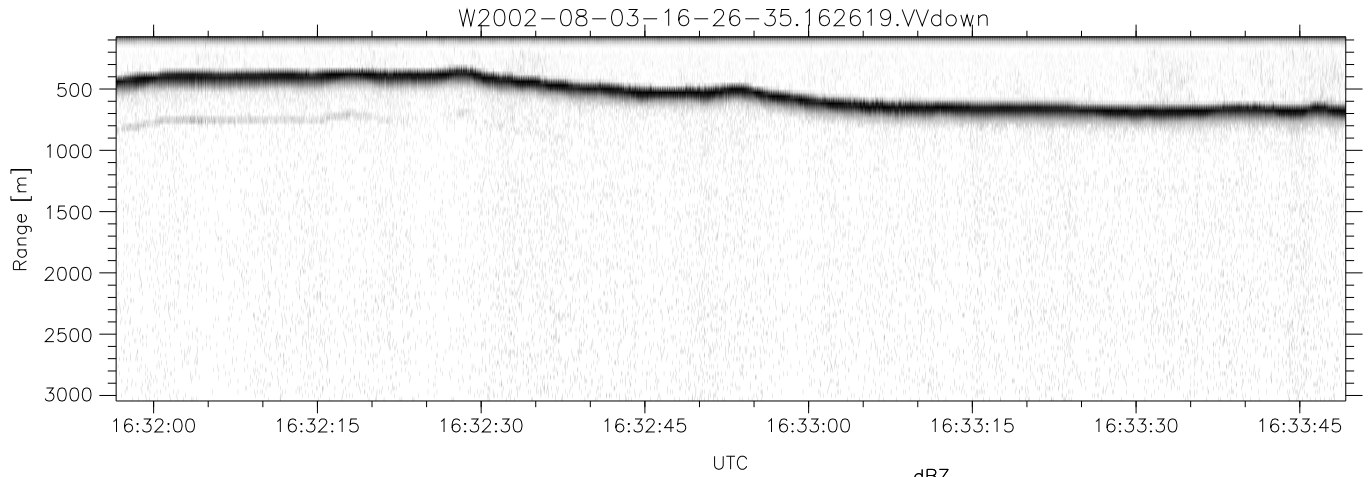


HiCu 2002 (dual-antenna config, modes 1,3,4,5,6,7) Data (cal: 55.0,50.0)

W2002-08-03-16-26-35 - SPPMAG  
 IRIG:1,UTC: 16:26:19.63 to 17:08:55.71, Dur: 2556s  
 TimeLngth: 2556.08s, TimeInt: 29ms (34.3pps)  
 TimeCor=-13.0s, DSPDif(mn,min,mx):29,28,172  
 PPS(min,max,std): 21,35,1.18  
 Prof: 398 to 87959, NumProf(t/r): 87561/34138  
 ProcTime/Recs: 16:26:19-16:42:56/0-34137  
 MxACQtime: 26ms; DRate: 55.3KB/s; Flags: 0, 0, 0  
 Pulse: 275ns, IFfilt: 5.0MHz; ppPol: VV  
 TxPol: V, PRF: 20 kHz  
 Range: Delay 75m, Spacing 30m, Gates 100  
 Ave. Pulses: 520, Rng/Prof Aspect@90m/s: 11.4

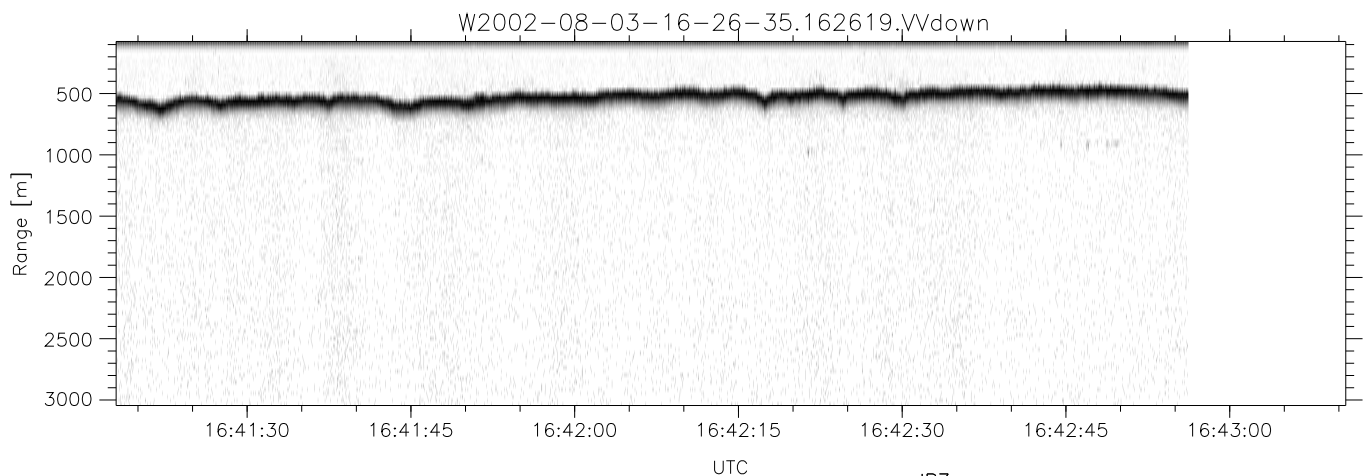
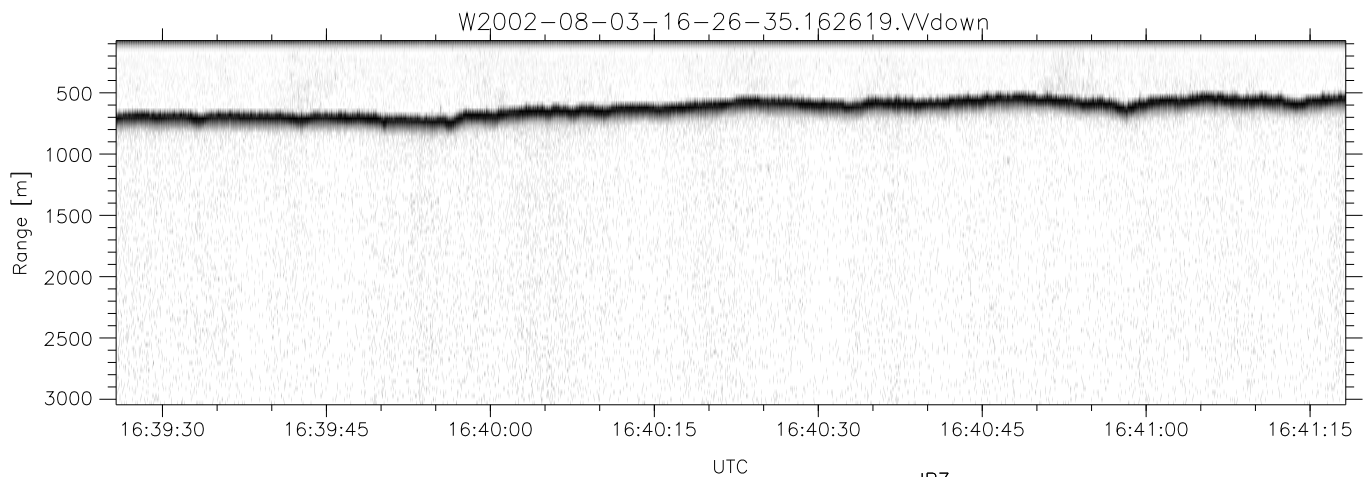
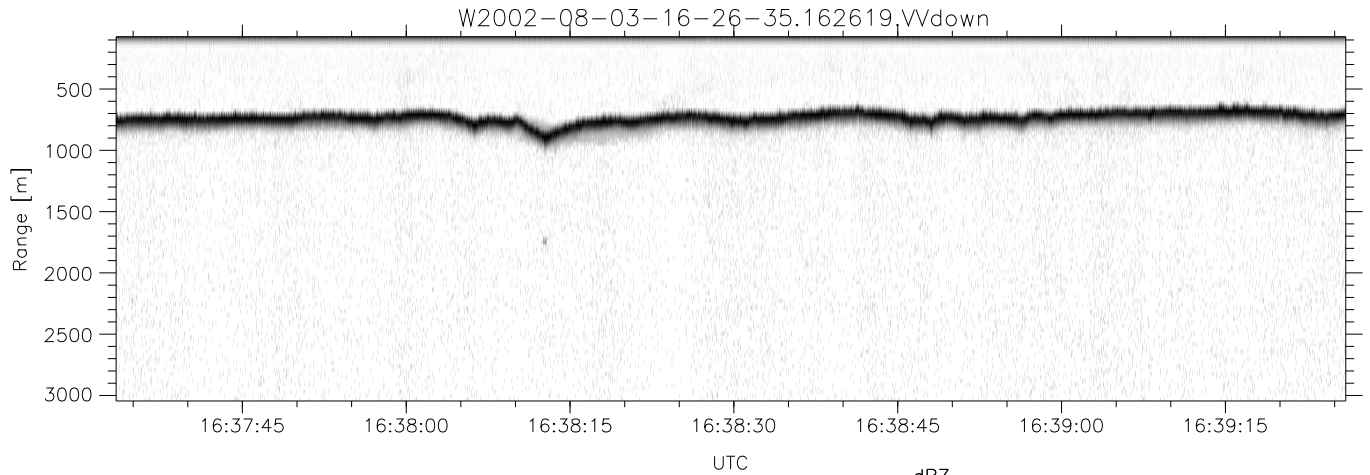
	Min	Max	Mean	Std	Varc%
hhN(dB)	-70.95	-69.20	-70.26	-84.11	4.1
vvN(dB)	-67.24	-65.73	-66.47	-80.14	4.3
vvL(dB)	-67.24	-4.66	-10.40	-10.08	107.
hvL(dB)	-70.94	-69.59	-70.25	-83.95	4.3
ppN(m/s)	-15.80	15.80	-0.08	9.08	
ppT(m/s)	-15.79	15.80	-0.03	6.44	
hv/vv(dB)	-NaN	-42.41	-NaN	-53.15	-437
hnjmp(dB)	-0.98	1.20	-0.09	-12.61	5.6
vnjmp(dB)	-1.03	0.82	-0.12	-12.65	5.6



HiCu 2002 (dual-antenna config, modes 1,3,4,5,6,7) Data (cal: 55.0,50.0)

W2002-08-03-16-26-35 - SPPMAG  
 IRIG:1,UTC: 16:26:19.63 to 17:08:55.71, Dur: 2556s  
 TimeLngth: 2556.08s, TimeInt: 29ms (34.3pps)  
 TimeCor=-13.0s, DSPDif(mn,min,mx):29,28,172  
 PPS(min,max,std): 21,35,1.18  
 Prof: 398 to 87959, NumProf(t/r): 87561/34138  
 ProcTime/Recs: 16:26:19-16:42:56/0-34137  
 MxACQtime: 26ms; DRate: 55.3KB/s; Flags: 0, 0, 0  
 Pulse: 275ns, IFilt: 5.0MHz; ppPol: VV  
 TxPol: V, PRF: 20 kHz  
 Range: Delay 75m, Spacing 30m, Gates 100  
 Ave. Pulses: 520, Rng/Prof Aspect@90m/s: 11.4

	Min	Max	Mean	Std	Varc%
hhN(dB)	-70.95	-69.20	-70.26	-84.11	4.1
vvN(dB)	-67.24	-65.73	-66.47	-80.14	4.3
vvL(dB)	-67.24	-4.66	-10.40	-10.08	107.
hvL(dB)	-70.94	-69.59	-70.25	-83.95	4.3
ppN(m/s)	-15.80	15.80	-0.08	9.08	
ppT(m/s)	-15.79	15.80	-0.03	6.44	
hv/vv(dB)	-NaN	-42.41	-NaN	-53.15	-437
hnjmp(dB)	-0.98	1.20	-0.09	-12.61	5.6
vnjmp(dB)	-1.03	0.82	-0.12	-12.65	5.6



HiCu 2002 (dual-antenna config, modes 1,3,4,5,6,7) Data (cal: 55.0,50.0)

W2002-08-03-16-26-35 - SPPMAG  
 IRIG:1,UTC: 16:26:19.63 to 17:08:55.71, Dur: 2556s  
 TimeLngth: 2556.08s, TimeInt: 29ms (34.3pps)  
 TimeCor=-13.0s, DSPDif(mn,min,mx):29,28,172  
 PPS(min,max,std): 21,35,1.18  
 Prof: 398 to 87959, NumProf(t/r): 87561/34138  
 ProcTime/Recs: 16:26:19-16:42:56/0-34137  
 MxACQtime: 26ms; DRate: 55.3KB/s; Flags: 0, 0, 0  
 Pulse: 275ns, IFfilt: 5.0MHz; ppPol: VV  
 TxPol: V, PRF: 20 kHz  
 Range: Delay 75m, Spacing 30m, Gates 100  
 Ave. Pulses: 520, Rng/Prof Aspect@90m/s: 11.4

	Min	Max	Mean	Std	Varc%
hhN(dB)	-70.95	-69.20	-70.26	-84.11	4.1
vvN(dB)	-67.24	-65.73	-66.47	-80.14	4.3
vvL(dB)	-67.24	-4.66	-10.40	-10.08	107.
hvL(dB)	-70.94	-69.59	-70.25	-83.95	4.3
ppN(m/s)	-15.80	15.80	-0.08	9.08	
ppT(m/s)	-15.79	15.80	-0.03	6.44	
hv/vv(dB)	-NaN	-42.41	-NaN	-53.15	-437
hnjmp(dB)	-0.98	1.20	-0.09	-12.61	5.6
vnjmp(dB)	-1.03	0.82	-0.12	-12.65	5.6