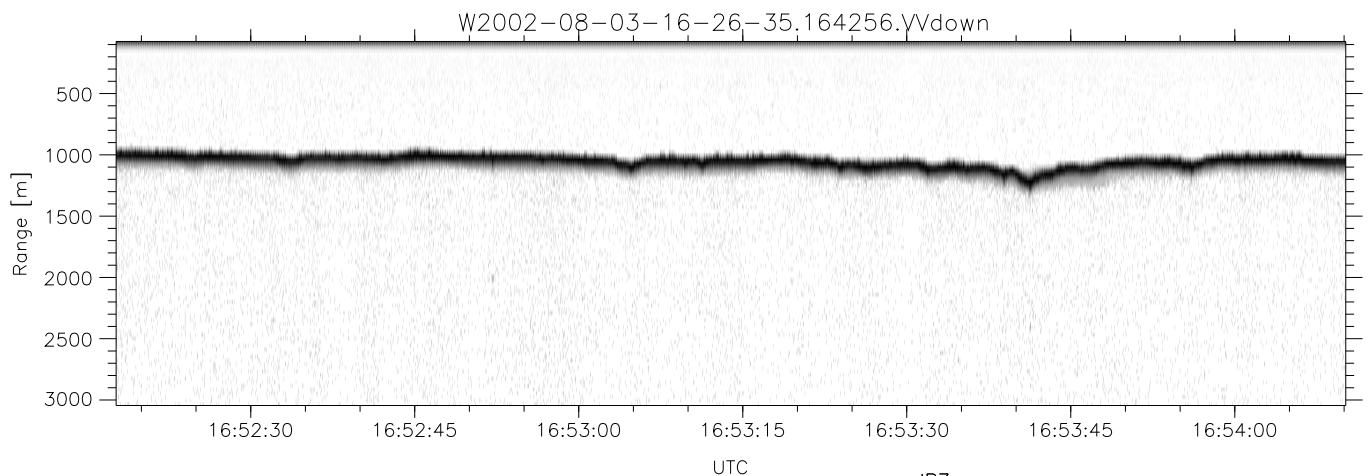
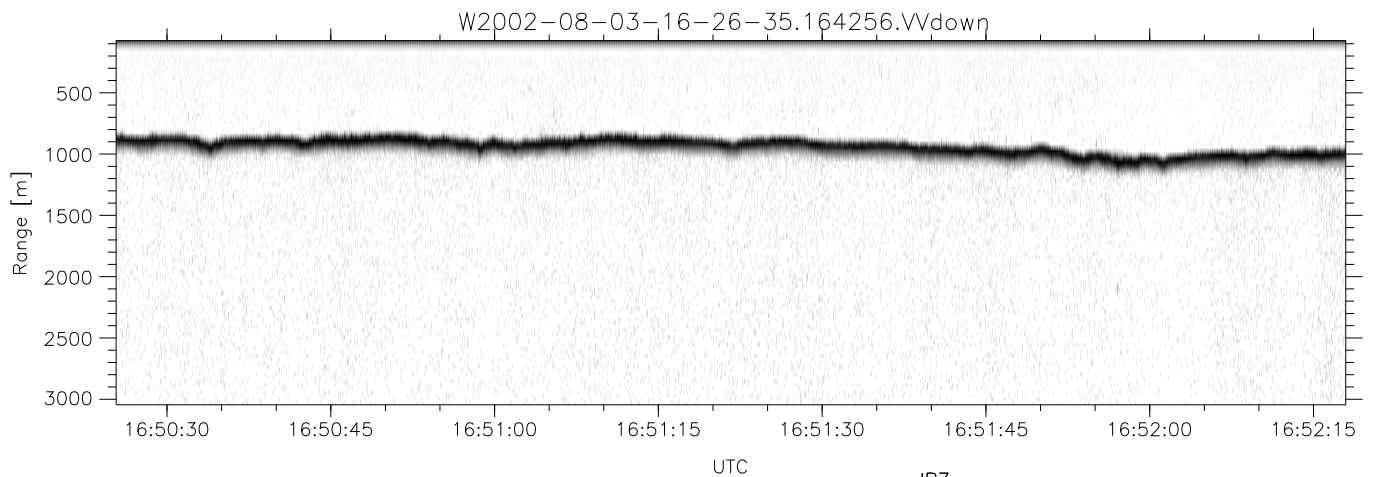
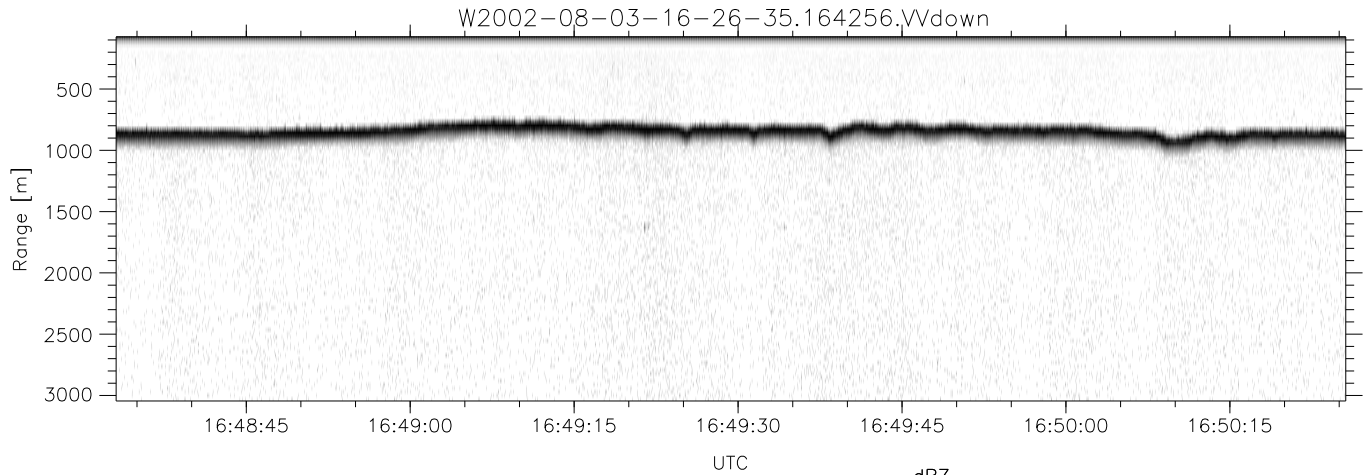


HiCu 2002 (dual-antenna config, modes 1,3,4,5,6,7) Data (cal: 55.0,50.0)

W2002-08-03-16-26-35 - SPPMAG
 IRIG:1,UTC: 16:26:19.63 to 17:08:55.71, Dur: 2556s
 TimeLngth: 2556.08s, TimeInt: 29ms (34.3pps)
 TimeCor=-13.0s, DSPDif(mn,min,mx):29,28,174
 PPS(min,max,std): 29,35,1.12
 Prof: 398 to 87959, NumProf(t/r): 87561/34138
 ProcTime/Recs: 16:42:56-16:59:32/34138-68275
 MxACQtime: 26ms; DRate: 55.3KB/s; Flags: 0, 0, 0
 Pulse: 275ns, IFfilt: 5.0MHz; ppPol: VV
 TxPol: V, PRF: 20 kHz
 Range: Delay 75m, Spacing 30m, Gates 100
 Ave. Pulses: 520, Rng/Prof Aspect@90m/s: 11.4

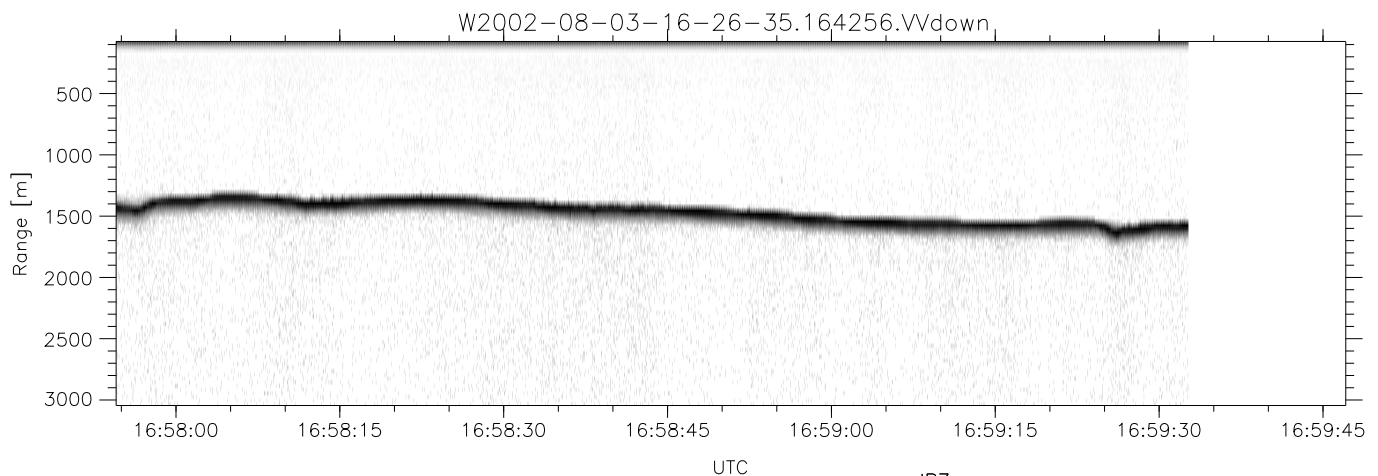
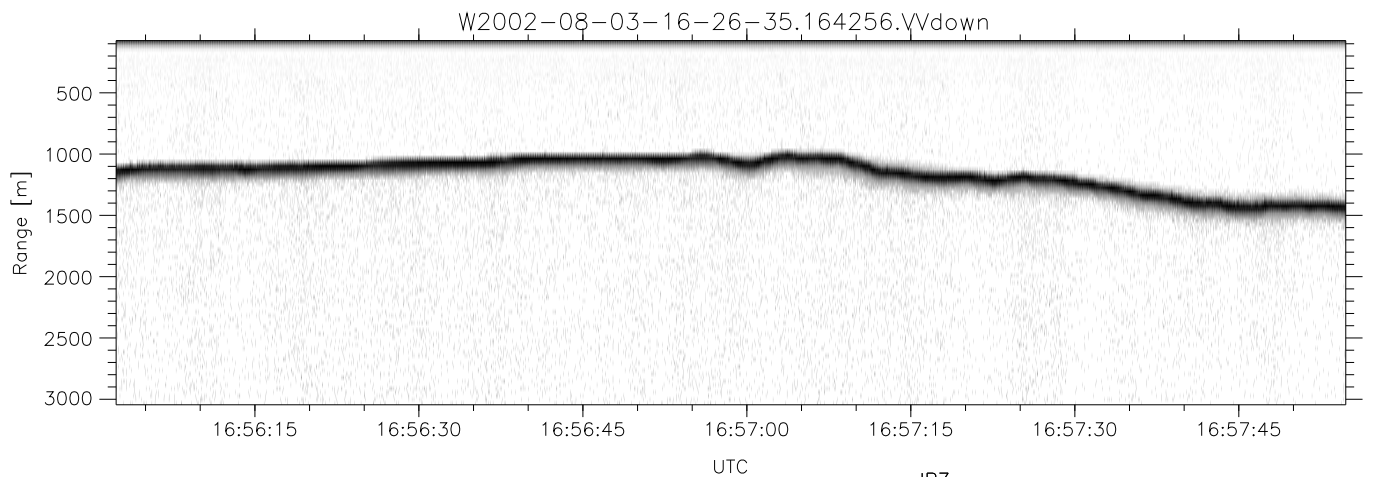
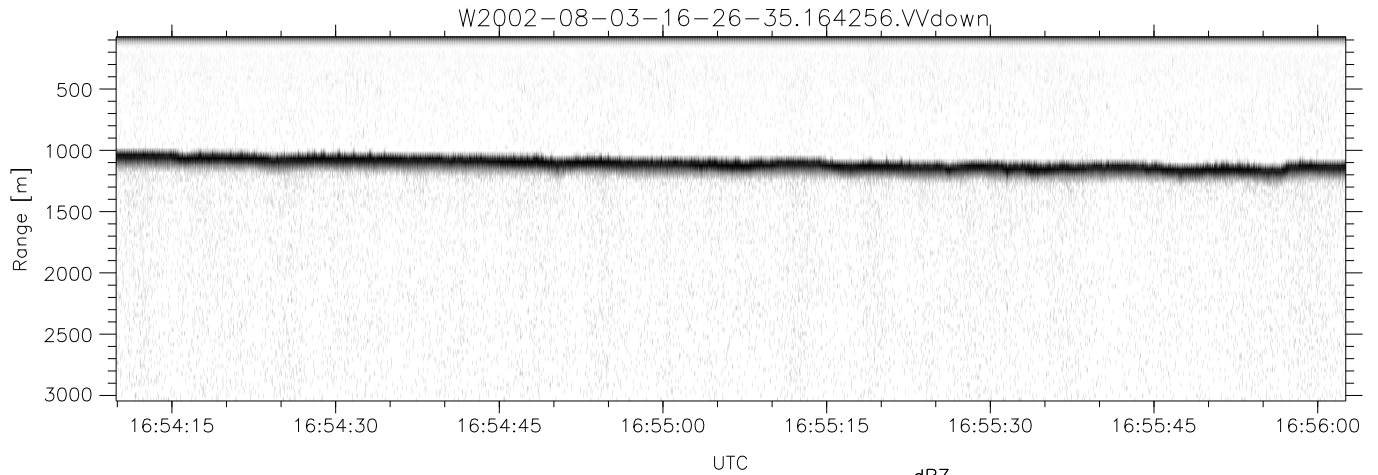
	Min	Max	Mean	Std	Varc%
hhN(dB)	-70.98	-69.31	-70.24	-84.12	4.1
vvN(dB)	-67.19	-65.61	-66.40	-80.13	4.2
vvL(dB)	-67.23	-3.38	-8.27	-8.17	102.
hvL(dB)	-70.95	-69.51	-70.23	-83.93	4.3
ppN(m/s)	-15.80	15.80	0.08	9.10	
ppT(m/s)	-15.80	15.80	-0.01	6.45	
hv/vv(dB)	-NaN	-41.18	-NaN	-52.79	-117
hnjmp(dB)	-0.98	1.08	-0.09	-12.61	5.6
vnjmp(dB)	-1.03	0.85	-0.12	-12.59	5.7



HiCu 2002 (dual-antenna config, modes 1,3,4,5,6,7) Data (cal: 55.0,50.0)

W2002-08-03-16-26-35 - SPPMAG
 IRIG:1,UTC: 16:26:19.63 to 17:08:55.71, Dur: 2556s
 TimeLngth: 2556.08s, TimeInt: 29ms (34.3pps)
 TimeCor=-13.0s, DSPDif(mn,min,mx):29,28,174
 PPS(min,max,std): 29,35,1.12
 Prof: 398 to 87959, NumProf(t/r): 87561/34138
 ProcTime/Recs: 16:42:56-16:59:32/34138-68275
 MxACQtime: 26ms; DRate: 55.3KB/s; Flags: 0, 0, 0
 Pulse: 275ns, IFfilt: 5.0MHz; ppPol: VV
 TxPol: V, PRF: 20 kHz
 Range: Delay 75m, Spacing 30m, Gates 100
 Ave. Pulses: 520, Rng/Prof Aspect@90m/s: 11.4

	Min	Max	Mean	Std	Varc%
hhN(dB)	-70.98	-69.31	-70.24	-84.12	4.1
vvN(dB)	-67.19	-65.61	-66.40	-80.13	4.2
vvL(dB)	-67.23	-3.38	-8.27	-8.17	102.
hvL(dB)	-70.95	-69.51	-70.23	-83.93	4.3
ppN(m/s)	-15.80	15.80	0.08	9.10	
ppT(m/s)	-15.80	15.80	-0.01	6.45	
hv/vv(dB)	-NaN	-41.18	-NaN	-52.79	-117
hnjmp(dB)	-0.98	1.08	-0.09	-12.61	5.6
vnjmp(dB)	-1.03	0.85	-0.12	-12.59	5.7



HiCu 2002 (dual-antenna config, modes 1,3,4,5,6,7) Data (cal: 55.0,50.0)

W2002-08-03-16-26-35 - SPPMAG
 IRIG:1,UTC: 16:26:19.63 to 17:08:55.71, Dur: 2556s
 TimeLngth: 2556.08s, TimeInt: 29ms (34.3pps)
 TimeCor=-13.0s, DSPDif(mn,min,mx):29,28,174
 PPS(min,max,std): 29,35,1.12
 Prof: 398 to 87959, NumProf(t/r): 87561/34138
 ProcTime/Recs: 16:42:56-16:59:32/34138-68275
 MxACQtime: 26ms; DRate: 55.3KB/s; Flags: 0, 0, 0
 Pulse: 275ns, IFfilt: 5.0MHz; ppPol: VV
 TxPol: V, PRF: 20 kHz
 Range: Delay 75m, Spacing 30m, Gates 100
 Ave. Pulses: 520, Rng/Prof Aspect@90m/s: 11.4

	Min	Max	Mean	Std	Varc%
hhN(dB)	-70.98	-69.31	-70.24	-84.12	4.1
vvN(dB)	-67.19	-65.61	-66.40	-80.13	4.2
vvL(dB)	-67.23	-3.38	-8.27	-8.17	102.
hvL(dB)	-70.95	-69.51	-70.23	-83.93	4.3
ppN(m/s)	-15.80	15.80	0.08	9.10	
ppT(m/s)	-15.80	15.80	-0.01	6.45	
hv/vv(dB)	-NaN	-41.18	-NaN	-52.79	-117
hnjmp(dB)	-0.98	1.08	-0.09	-12.61	5.6
vnjmp(dB)	-1.03	0.85	-0.12	-12.59	5.7