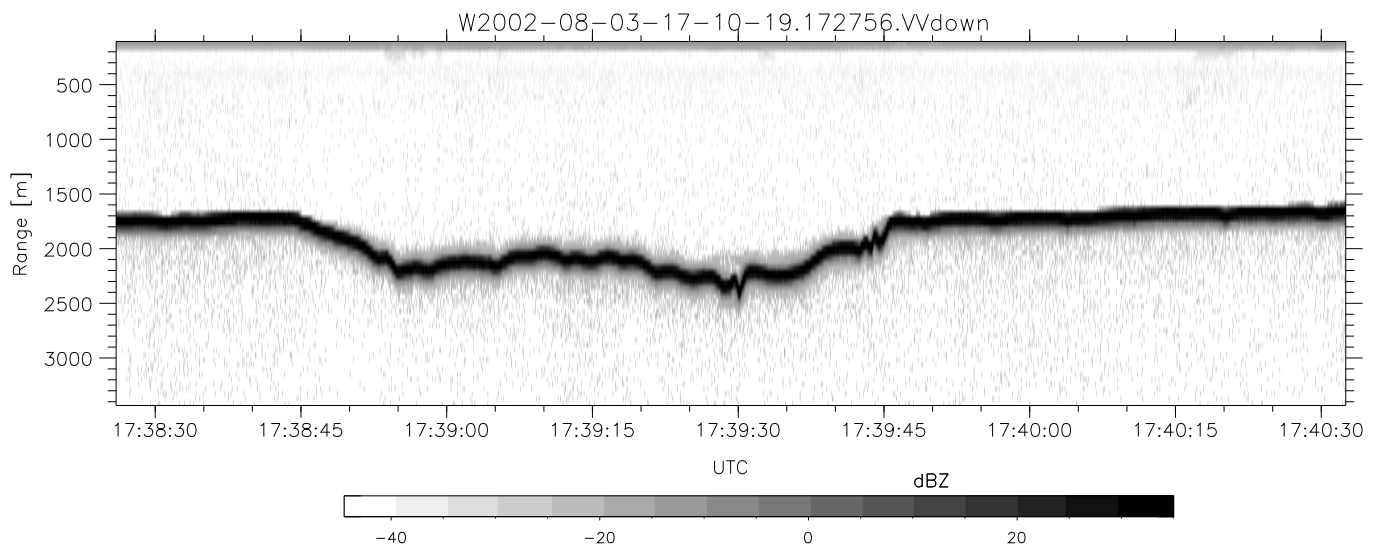
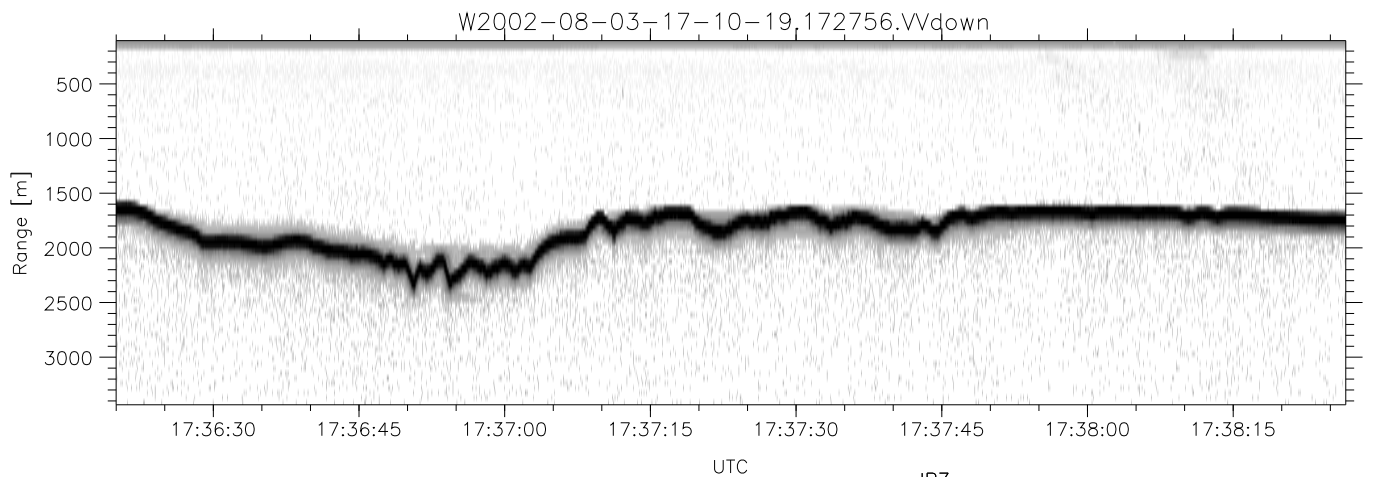
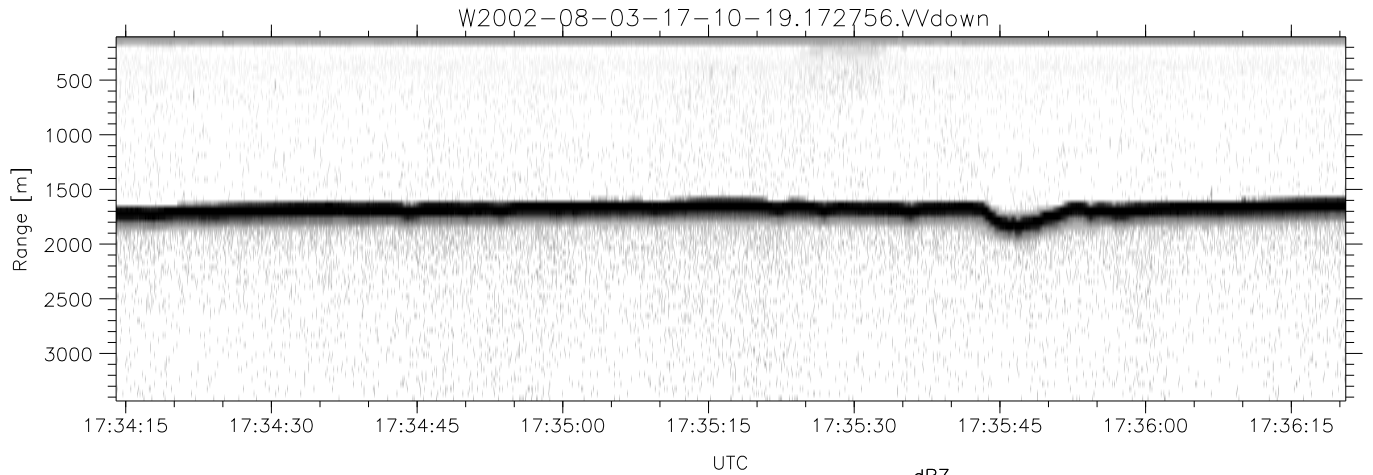


HiCu 2002 (dual-antenna config, modes 1,3,4,5,6,7) Data (cal: 55.0,50.0)

W2002-08-03-17-10-19 - SPPMAG
 IRIG:1,UTC: 17:10:03.35 to 18:02:28.84, Dur: 3145s
 TimeLngth: 3145.49s, TimeInt: 67ms (14.7pps)
 TimeCor=-13.0s, DSPDif(mn,min,mx):67,67,130
 PPS(min,max,std): 13,15,0.44
 Prof: 214 to 46583, NumProf(t/r): 46369/15814
 ProcTime/Recs: 17:27:56-17:45:48/15814-31627
 MxACQtime: 64ms; DRate: 18.0KB/s; Flags: 0, 0, 0
 Pulse: 575ns, IFfilt: 2.0MHz; ppPol: VV
 TxPol: V, PRF: 10 kHz
 Range: Delay 105m, Spacing 45m, Gates 75
 Ave. Pulses: 648, Rng/Prof Aspect@90m/s: 7.4

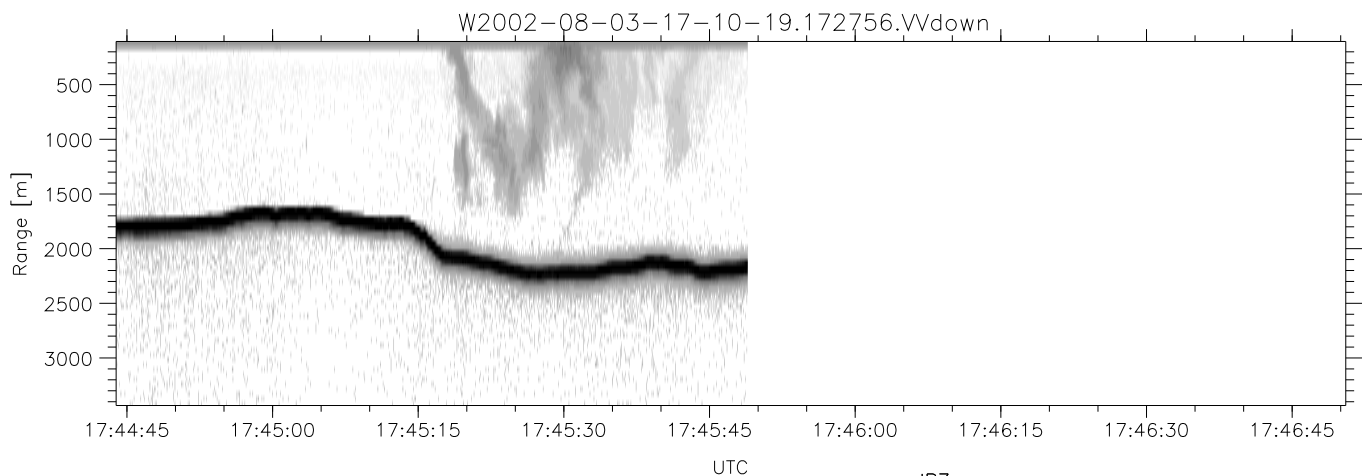
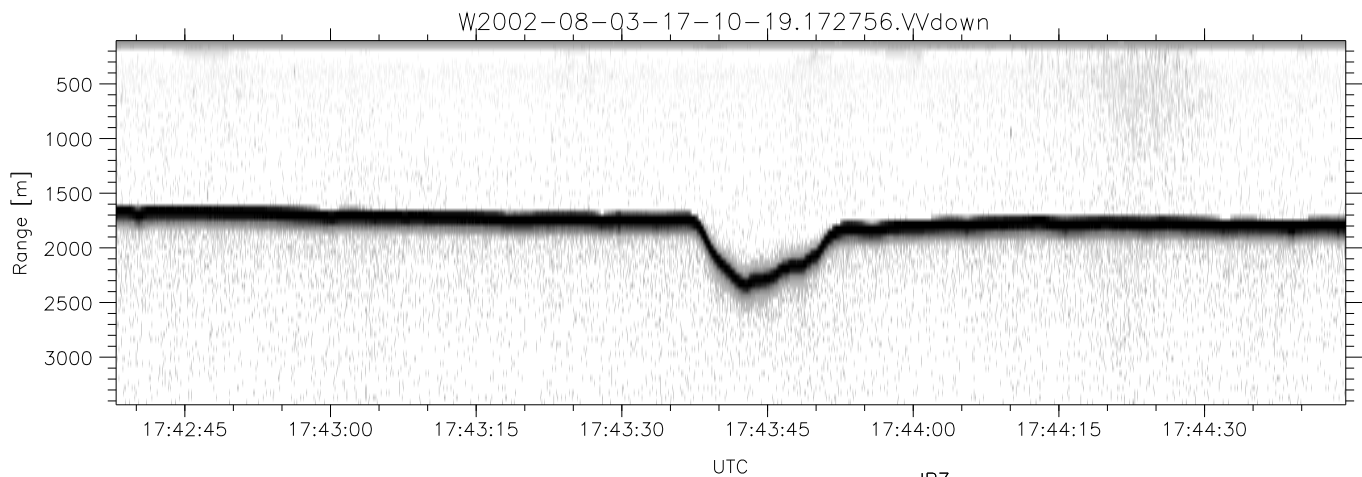
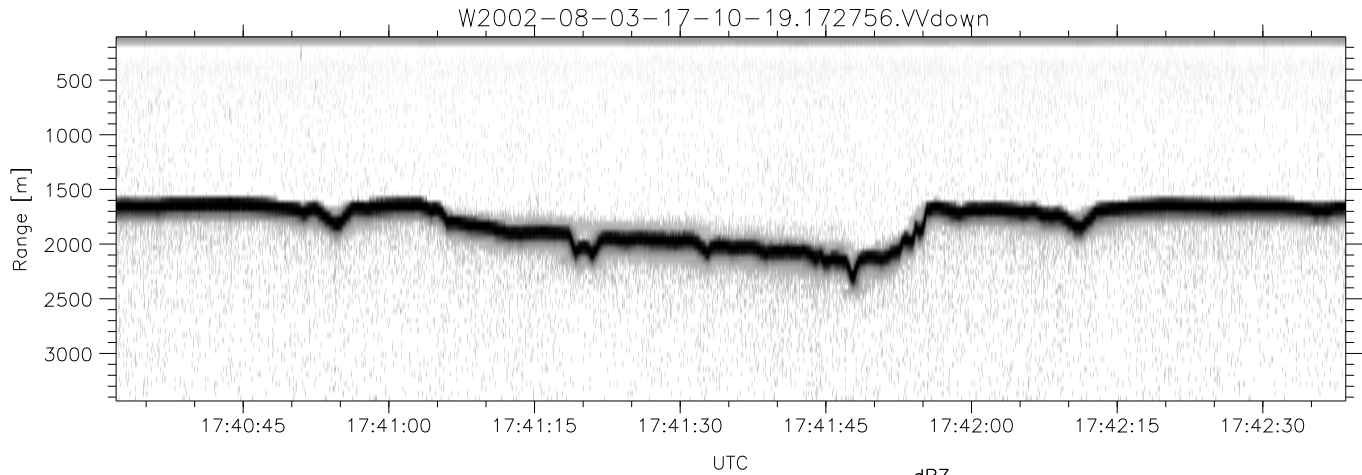
	Min	Max	Mean	Std	Varc%
hhN(dB)	-75.12	-74.03	-74.58	-89.77	3.0
vvN(dB)	-71.06	-69.54	-70.41	-83.95	4.4
vvL(dB)	-5.31	-0.36	-2.46	-10.05	17.4
hvL(dB)	-75.02	-74.01	-74.54	-89.71	3.0
ppN(m/s)	-7.90	7.90	0.04	4.50	
ppT(m/s)	-0.01	0.01	-0.00	0.00	
hv/vv(dB)	-NaN	-47.50	-71.15	-58.66	1772
hnjmp(dB)	-0.74	0.57	-0.09	-14.05	4.0
vnjmp(dB)	-0.98	0.74	-0.15	-12.96	5.2



HiCu 2002 (dual-antenna config, modes 1,3,4,5,6,7) Data (cal: 55.0,50.0)

W2002-08-03-17-10-19 - SPPMAG
 IRIG:1,UTC: 17:10:03.35 to 18:02:28.84, Dur: 3145s
 TimeLngth: 3145.49s, TimeInt: 67ms (14.7pps)
 TimeCor=-13.0s, DSPDif(mn,min,mx):67,67,130
 PPS(min,max,std): 13,15,0.44
 Prof: 214 to 46583, NumProf(t/r): 46369/15814
 ProcTime/Recs: 17:27:56-17:45:48/15814-31627
 MxACQtime: 64ms; DRate: 18.0KB/s; Flags: 0, 0, 0
 Pulse: 575ns, IFfilt: 2.0MHz; ppPol: VV
 TxPol: V, PRF: 10 kHz
 Range: Delay 105m, Spacing 45m, Gates 75
 Ave. Pulses: 648, Rng/Prof Aspect@90m/s: 7.4

	Min	Max	Mean	Std	Varc%
hhN(dB)	-75.12	-74.03	-74.58	-89.77	3.0
vvN(dB)	-71.06	-69.54	-70.41	-83.95	4.4
vvL(dB)	-5.31	-0.36	-2.46	-10.05	17.4
hvL(dB)	-75.02	-74.01	-74.54	-89.71	3.0
ppN(m/s)	-7.90	7.90	0.04	4.50	
ppT(m/s)	-0.01	0.01	-0.00	0.00	
hv/vv(dB)	-NaN	-47.50	-71.15	-58.66	1772
hnjmp(dB)	-0.74	0.57	-0.09	-14.05	4.0
vnjmp(dB)	-0.98	0.74	-0.15	-12.96	5.2



HiCu 2002 (dual-antenna config, modes 1,3,4,5,6,7) Data (cal: 55.0,50.0)

W2002-08-03-17-10-19 - SPPMAG
 IRIG:1,UTC: 17:10:03.35 to 18:02:28.84, Dur: 3145s
 TimeLngth: 3145.49s, TimeInt: 67ms (14.7pps)
 TimeCor=-13.0s, DSPDif(mn,min,mx):67,67,130
 PPS(min,max,std): 13,15,0.44
 Prof: 214 to 46583, NumProf(t/r): 46369/15814
 ProcTime/Recs: 17:27:56-17:45:48/15814-31627
 MxACQtime: 64ms; DRate: 18.0KB/s; Flags: 0, 0, 0
 Pulse: 575ns, IFfilt: 2.0MHz; ppPol: VV
 TxPol: V, PRF: 10 kHz
 Range: Delay 105m, Spacing 45m, Gates 75
 Ave. Pulses: 648, Rng/Prof Aspect@90m/s: 7.4

	Min	Max	Mean	Std	Varc%
hhN(dB)	-75.12	-74.03	-74.58	-89.77	3.0
vvN(dB)	-71.06	-69.54	-70.41	-83.95	4.4
vvL(dB)	-5.31	-0.36	-2.46	-10.05	17.4
hvL(dB)	-75.02	-74.01	-74.54	-89.71	3.0
ppN(m/s)	-7.90	7.90	0.04	4.50	
ppT(m/s)	-0.01	0.01	-0.00	0.00	
hv/vv(dB)	-NaN	-47.50	-71.15	-58.66	1772
hnjmp(dB)	-0.74	0.57	-0.09	-14.05	4.0
vnjmp(dB)	-0.98	0.74	-0.15	-12.96	5.2