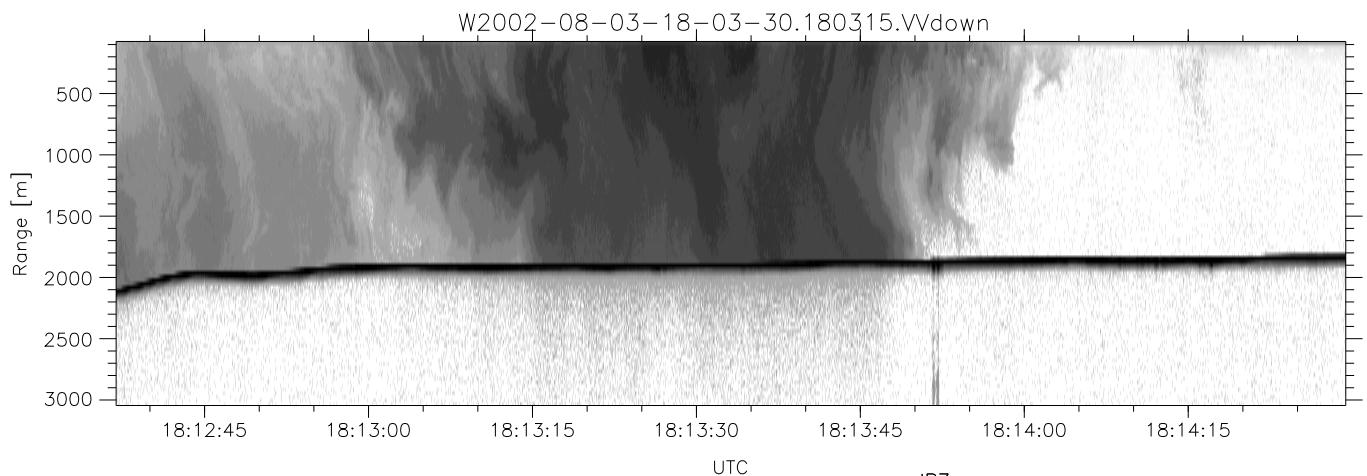
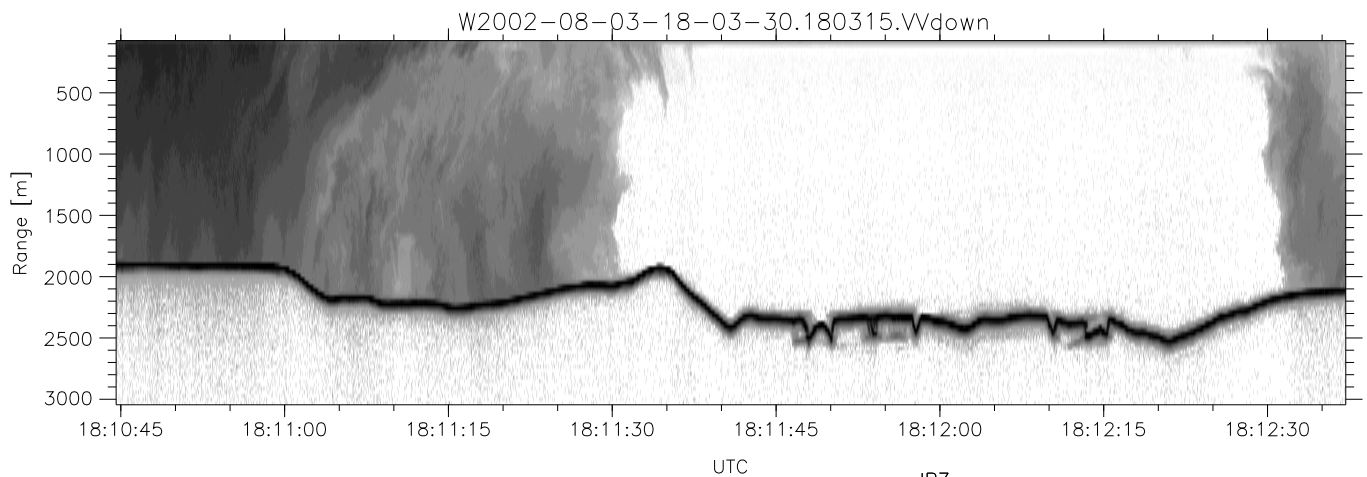
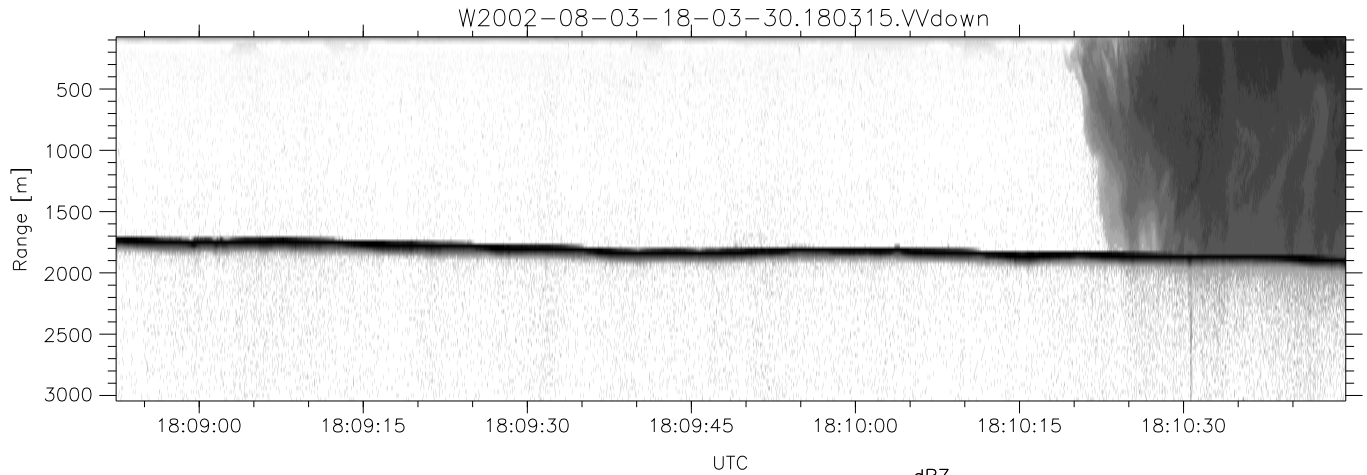


HiCu 2002 (dual-antenna config, modes 1,3,4,5,6,7) Data (cal: 55.0,50.0)

W2002-08-03-18-03-30 - SPPMAG
 IRIG:1,UTC: 18:03:15.35 to 19:10:42.84, Dur: 4047s
 TimeLngth: 4047.49s, TimeInt: 29ms (34.3pps)
 TimeCor=-13.0s, DSPDif(mn,min,mx):29,28,170
 PPS(min,max,std): 20,35,1.18
 Prof: 318 to 138964, NumProf(t/r): 138646/34138
 ProcTime/Recs: 18:03:15-18:19:52/0-34137
 MxACQtime: 26ms; DRate: 55.3KB/s; Flags: 0, 0, 0
 Pulse: 275ns, IFfilt: 5.0MHz; ppPol: VV
 TxPol: V, PRF: 20 kHz
 Range: Delay 75m, Spacing 30m, Gates 100
 Ave. Pulses: 520, Rng/Prof Aspect@90m/s: 11.4

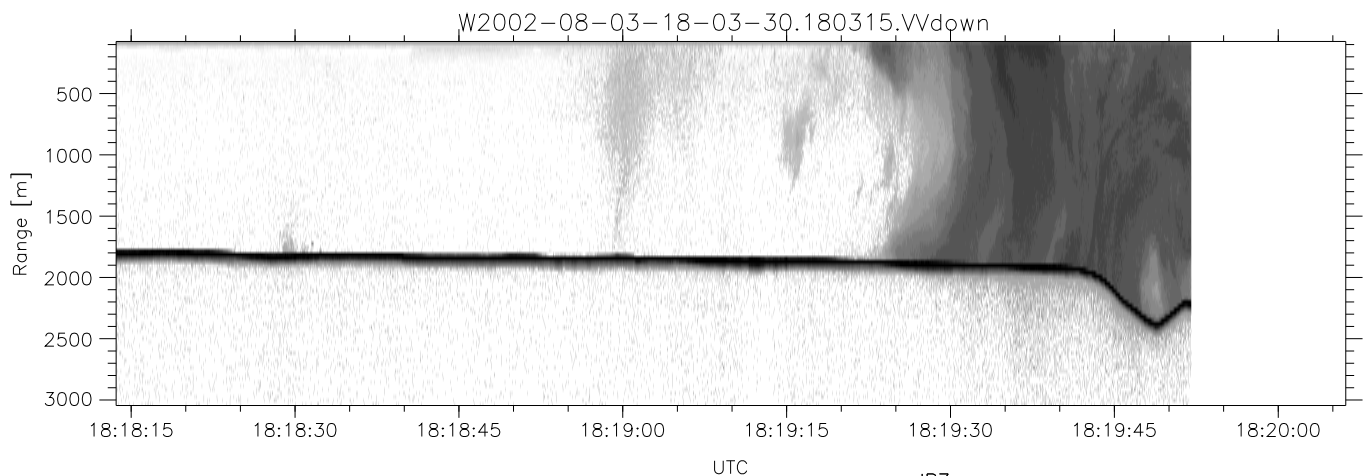
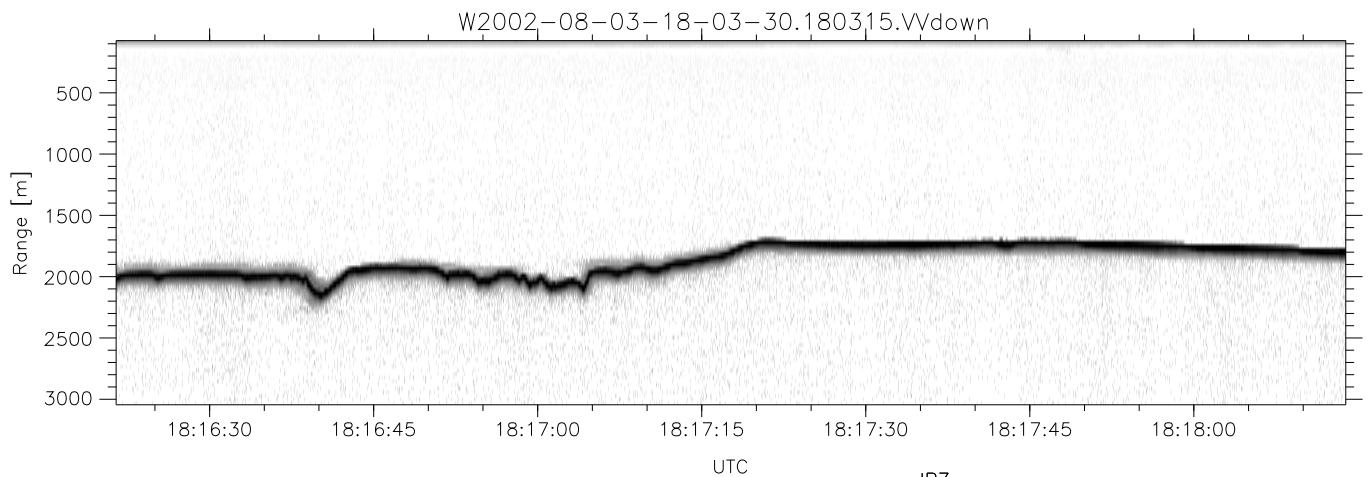
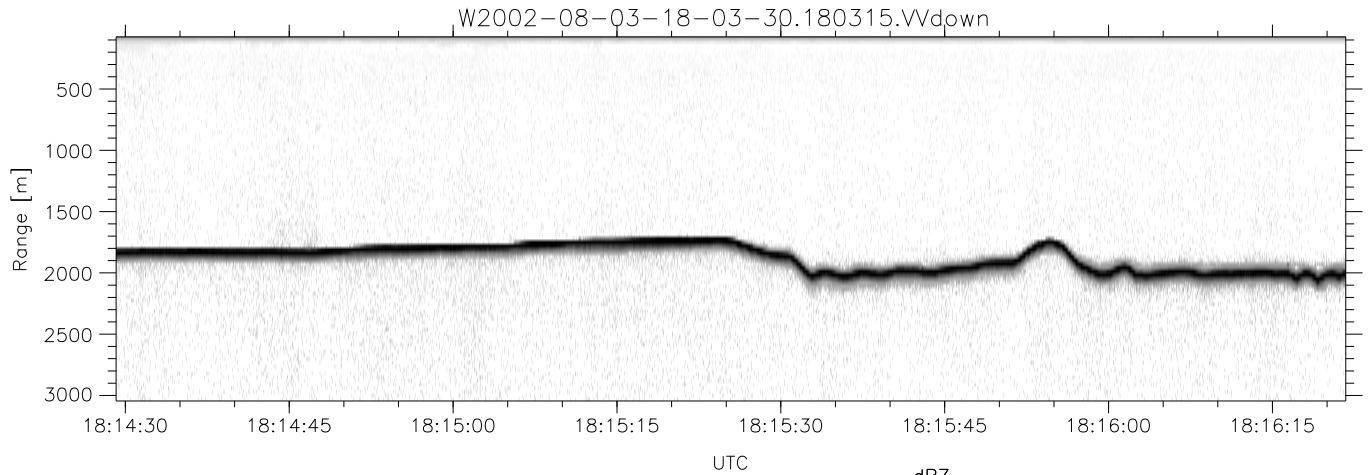
	Min	Max	Mean	Std	Varc%
hhN(dB)	-71.12	-69.73	-70.39	-84.22	4.1
vvN(dB)	-67.27	-65.06	-66.32	-77.39	7.8
vvL(dB)	-9.24	-3.01	-6.06	-12.91	20.6
hvL(dB)	-71.26	-69.66	-70.36	-84.16	4.2
ppN(m/s)	-15.80	15.80	0.07	9.08	
ppT(m/s)	-0.02	0.01	-0.00	0.00	
hv/vv(dB)	-NaN	-41.61	-62.73	-51.05	1472
hnjmp(dB)	-1.17	0.83	-0.11	-12.77	5.4
vnjmp(dB)	-1.07	0.88	-0.15	-12.68	5.6



HiCu 2002 (dual-antenna config, modes 1,3,4,5,6,7) Data (cal: 55.0,50.0)

W2002-08-03-18-03-30 - SPPMAG
 IRIG:1,UTC: 18:03:15.35 to 19:10:42.84, Dur: 4047s
 TimeLngth: 4047.49s, TimeInt: 29ms (34.3pps)
 TimeCor=-13.0s, DSPDif(mn,min,mx):29,28,170
 PPS(min,max,std): 20,35,1.18
 Prof: 318 to 138964, NumProf(t/r): 138646/34138
 ProcTime/Recs: 18:03:15-18:19:52/0-34137
 MxACQtime: 26ms; DRate: 55.3KB/s; Flags: 0, 0, 0
 Pulse: 275ns, IFfilt: 5.0MHz; ppPol: VV
 TxPol: V, PRF: 20 kHz
 Range: Delay 75m, Spacing 30m, Gates 100
 Ave. Pulses: 520, Rng/Prof Aspect@90m/s: 11.4

	Min	Max	Mean	Std	Varc%
hhN(dB)	-71.12	-69.73	-70.39	-84.22	4.1
vvN(dB)	-67.27	-65.06	-66.32	-77.39	7.8
vvL(dB)	-9.24	-3.01	-6.06	-12.91	20.6
hvL(dB)	-71.26	-69.66	-70.36	-84.16	4.2
ppN(m/s)	-15.80	15.80	0.07	9.08	
ppT(m/s)	-0.02	0.01	-0.00	0.00	
hv/vv(dB)	-NaN	-41.61	-62.73	-51.05	1472
hnjmp(dB)	-1.17	0.83	-0.11	-12.77	5.4
vnjmp(dB)	-1.07	0.88	-0.15	-12.68	5.6



HiCu 2002 (dual-antenna config, modes 1,3,4,5,6,7) Data (cal: 55.0,50.0)

W2002-08-03-18-03-30 - SPPMAG
 IRIG:1,UTC: 18:03:15.35 to 19:10:42.84, Dur: 4047s
 TimeLngth: 4047.49s, TimeInt: 29ms (34.3pps)
 TimeCor=-13.0s, DSPDif(mn,min,mx):29,28,170
 PPS(min,max,std): 20,35,1.18
 Prof: 318 to 138964, NumProf(t/r): 138646/34138
 ProcTime/Recs: 18:03:15-18:19:52/0-34137
 MxACQtime: 26ms; DRate: 55.3KB/s; Flags: 0, 0, 0
 Pulse: 275ns, IFfilt: 5.0MHz; ppPol: VV
 TxPol: V, PRF: 20 kHz
 Range: Delay 75m, Spacing 30m, Gates 100
 Ave. Pulses: 520, Rng/Prof Aspect@90m/s: 11.4

	Min	Max	Mean	Std	Varc%
hhN(dB)	-71.12	-69.73	-70.39	-84.22	4.1
vvN(dB)	-67.27	-65.06	-66.32	-77.39	7.8
vvL(dB)	-9.24	-3.01	-6.06	-12.91	20.6
hvL(dB)	-71.26	-69.66	-70.36	-84.16	4.2
ppN(m/s)	-15.80	15.80	0.07	9.08	
ppT(m/s)	-0.02	0.01	-0.00	0.00	
hv/vv(dB)	-NaN	-41.61	-62.73	-51.05	1472
hnjmp(dB)	-1.17	0.83	-0.11	-12.77	5.4
vnjmp(dB)	-1.07	0.88	-0.15	-12.68	5.6