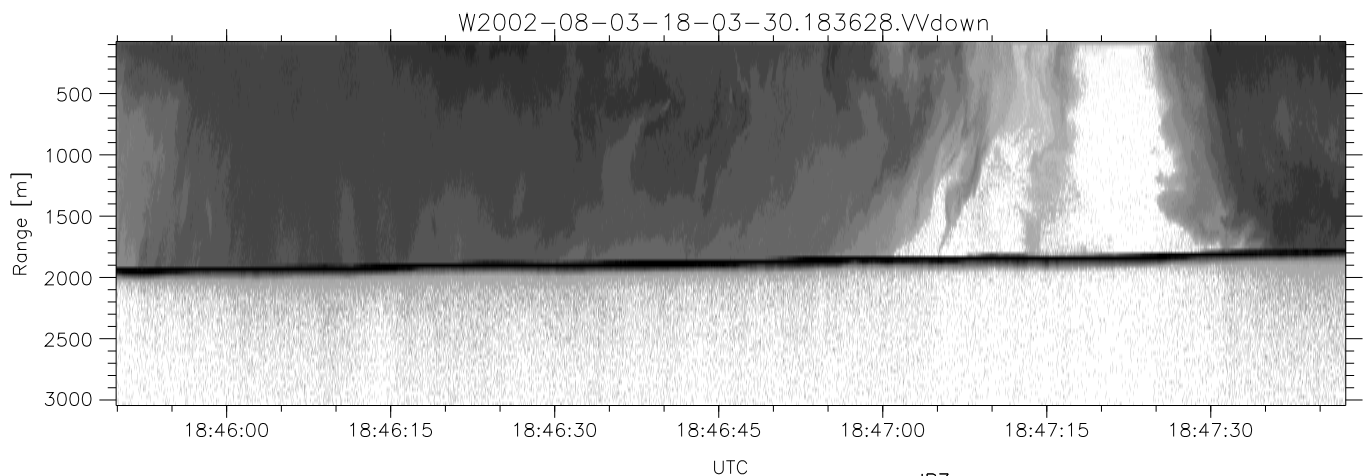
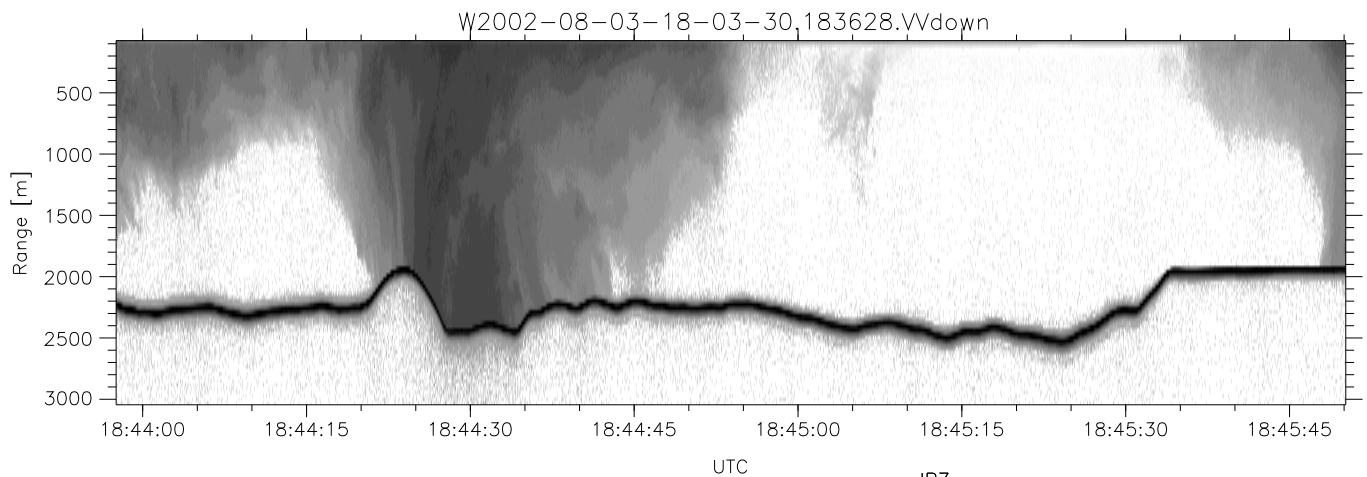
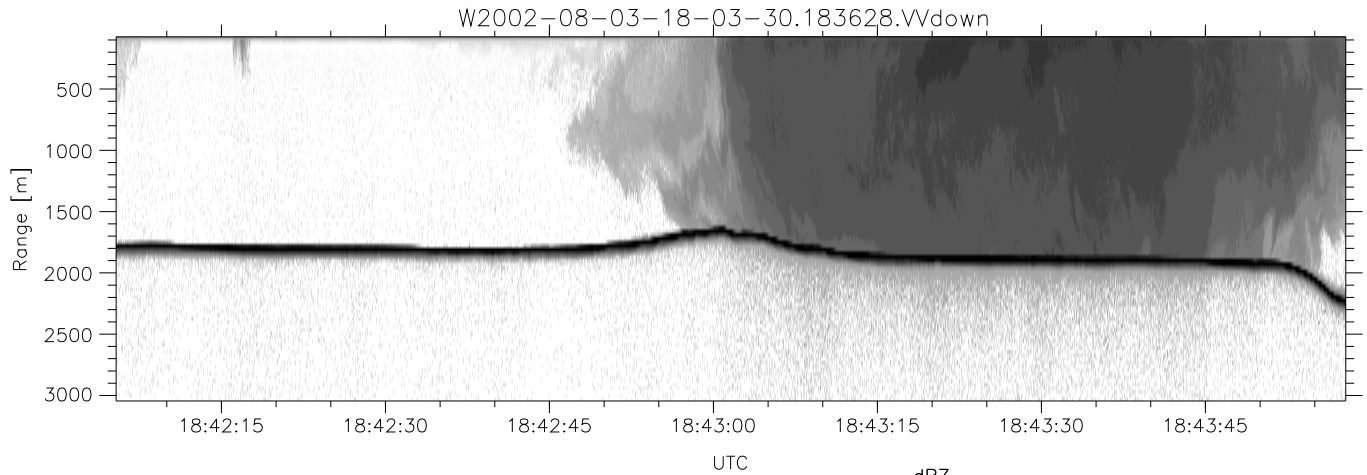


HiCu 2002 (dual-antenna config, modes 1,3,4,5,6,7) Data (cal: 55.0,50.0)

W2002-08-03-18-03-30 - SPPMAG  
 IRIG:1,UTC: 18:03:15.35 to 19:10:42.84, Dur: 4047s  
 TimeLngth: 4047.49s, TimeInt: 29ms (34.3pps)  
 TimeCor=-13.0s, DSPDif(mn,min,mx):29,28,184  
 PPS(min,max,std): 29,35,1.09  
 Prof: 318 to 138964, NumProf(t/r): 138646/34138  
 ProcTime/Recs: 18:36:28-18:53:05/68276-102413  
 MxAcQtime: 26ms; DRate: 55.3KB/s; Flags: 0, 0, 0  
 Pulse: 275ns, IFfilt: 5.0MHz; ppPol: VV  
 TxPol: V, PRF: 20 kHz  
 Range: Delay 75m, Spacing 30m, Gates 100  
 Ave. Pulses: 520, Rng/Prof Aspect@90m/s: 11.4

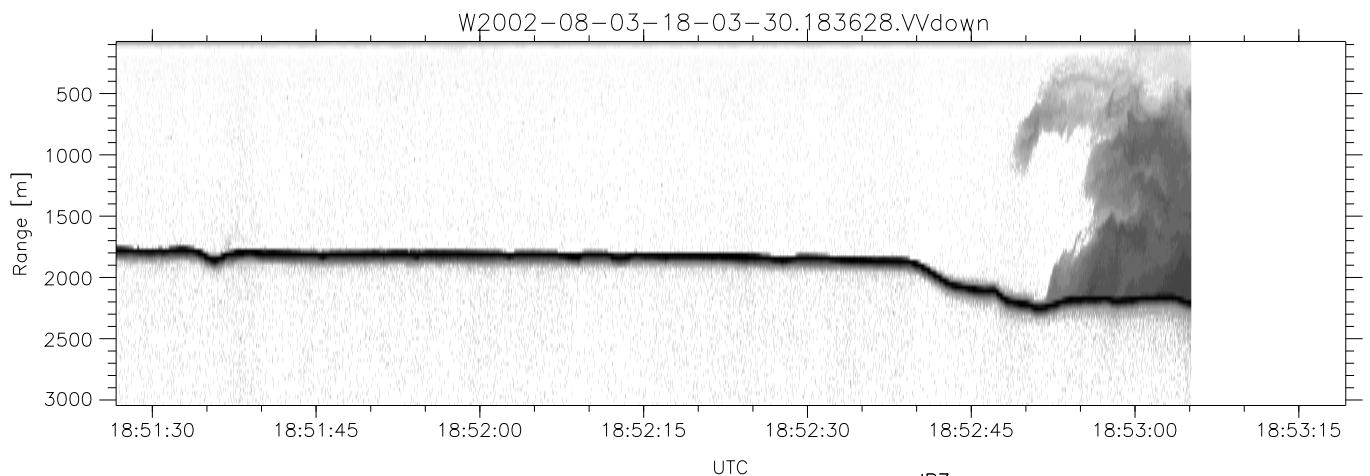
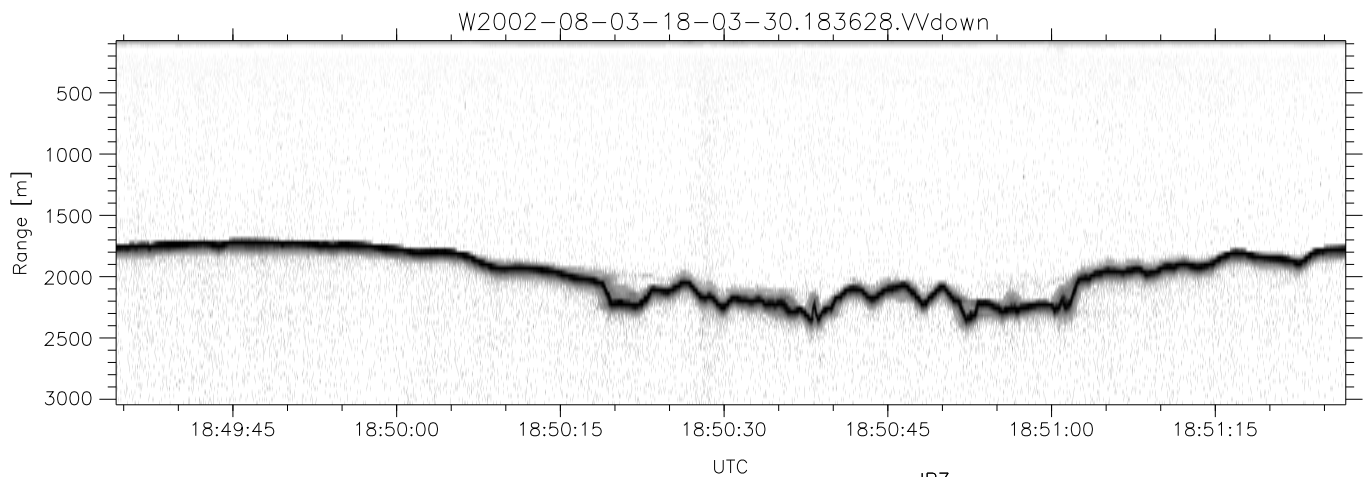
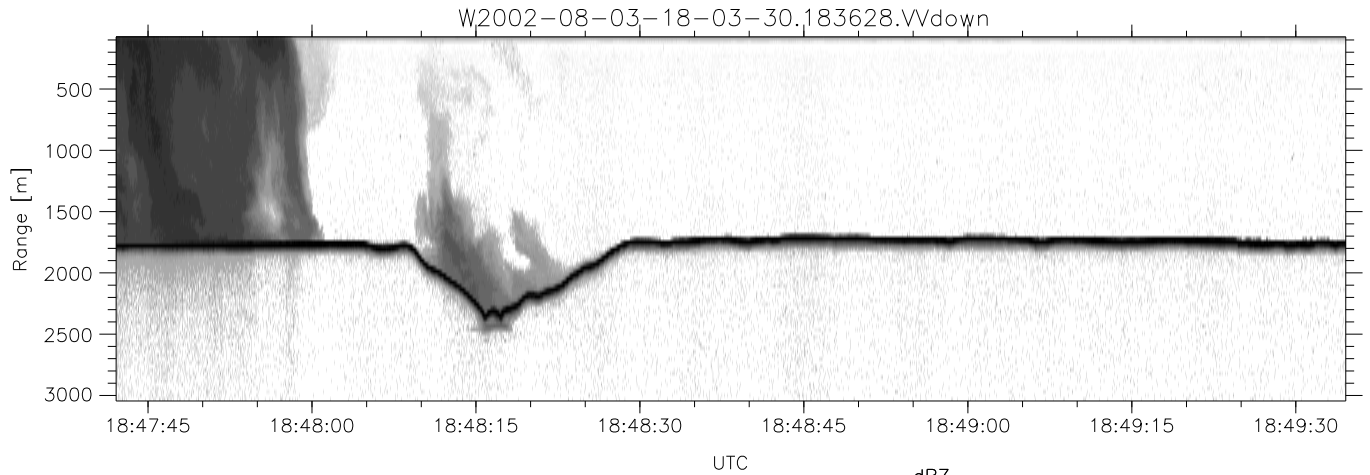
	Min	Max	Mean	Std	Varc%
hhN(dB)	-71.39	-69.85	-70.56	-84.40	4.1
vvN(dB)	-67.37	-65.22	-66.43	-77.13	8.5
vvL(dB)	-9.53	-3.86	-6.90	-13.73	20.8
hvL(dB)	-71.33	-69.89	-70.54	-84.39	4.1
ppN(m/s)	-15.80	15.80	-0.05	9.11	
ppT(m/s)	-0.02	0.01	-0.00	0.00	
hv/vv(dB)	-NaN	-41.48	-64.08	-51.14	1964
hnjmp(dB)	-1.10	0.88	-0.11	-12.75	5.5
vnjmp(dB)	-1.02	0.87	-0.15	-12.67	5.6



HiCu 2002 (dual-antenna config, modes 1,3,4,5,6,7) Data (cal: 55.0,50.0)

W2002-08-03-18-03-30 - SPPMAG  
 IRIG:1,UTC: 18:03:15.35 to 19:10:42.84, Dur: 4047s  
 TimeLngth: 4047.49s, TimeInt: 29ms (34.3pps)  
 TimeCor=-13.0s, DSPDif(mn,min,mx):29,28,184  
 PPS(min,max,std): 29,35,1.09  
 Prof: 318 to 138964, NumProf(t/r): 138646/34138  
 ProcTime/Recs: 18:36:28-18:53:05/68276-102413  
 MxACQtime: 26ms; DRate: 55.3KB/s; Flags: 0, 0, 0  
 Pulse: 275ns, IFfilt: 5.0MHz; ppPol: VV  
 TxPol: V, PRF: 20 kHz  
 Range: Delay 75m, Spacing 30m, Gates 100  
 Ave. Pulses: 520, Rng/Prof Aspect@90m/s: 11.4

	Min	Max	Mean	Std	Varc%
hhN(dB)	-71.39	-69.85	-70.56	-84.40	4.1
vvN(dB)	-67.37	-65.22	-66.43	-77.13	8.5
vvL(dB)	-9.53	-3.86	-6.90	-13.73	20.8
hvL(dB)	-71.33	-69.89	-70.54	-84.39	4.1
ppN(m/s)	-15.80	15.80	-0.05	9.11	
ppT(m/s)	-0.02	0.01	-0.00	0.00	
hv/vv(dB)	-NaN	-41.48	-64.08	-51.14	1964
hnjmp(dB)	-1.10	0.88	-0.11	-12.75	5.5
vnjmp(dB)	-1.02	0.87	-0.15	-12.67	5.6



HiCu 2002 (dual-antenna config, modes 1,3,4,5,6,7) Data (cal: 55.0,50.0)

W2002-08-03-18-03-30 - SPPMAG  
 IRIG:1,UTC: 18:03:15.35 to 19:10:42.84, Dur: 4047s  
 TimeLngth: 4047.49s, TimeInt: 29ms (34.3pps)  
 TimeCor=-13.0s, DSPDif(mn,min,mx):29,28,184  
 PPS(min,max,std): 29,35,1.09  
 Prof: 318 to 138964, NumProf(t/r): 138646/34138  
 ProcTime/Recs: 18:36:28-18:53:05/68276-102413  
 MxACQtime: 26ms; DRate: 55.3KB/s; Flags: 0, 0, 0  
 Pulse: 275ns, IFfilt: 5.0MHz; ppPol: VV  
 TxPol: V, PRF: 20 kHz  
 Range: Delay 75m, Spacing 30m, Gates 100  
 Ave. Pulses: 520, Rng/Prof Aspect@90m/s: 11.4

	Min	Max	Mean	Std	Varc%
hhN(dB)	-71.39	-69.85	-70.56	-84.40	4.1
vvN(dB)	-67.37	-65.22	-66.43	-77.13	8.5
vvL(dB)	-9.53	-3.86	-6.90	-13.73	20.8
hvL(dB)	-71.33	-69.89	-70.54	-84.39	4.1
ppN(m/s)	-15.80	15.80	-0.05	9.11	
ppT(m/s)	-0.02	0.01	-0.00	0.00	
hv/vv(dB)	-NaN	-41.48	-64.08	-51.14	1964
hnjmp(dB)	-1.10	0.88	-0.11	-12.75	5.5
vnjmp(dB)	-1.02	0.87	-0.15	-12.67	5.6