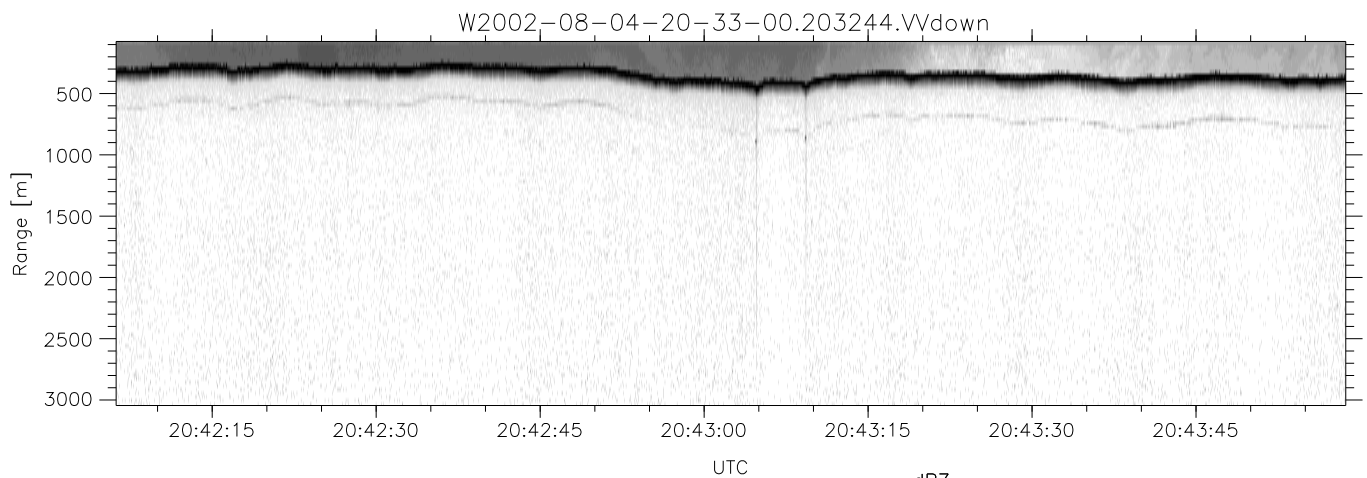
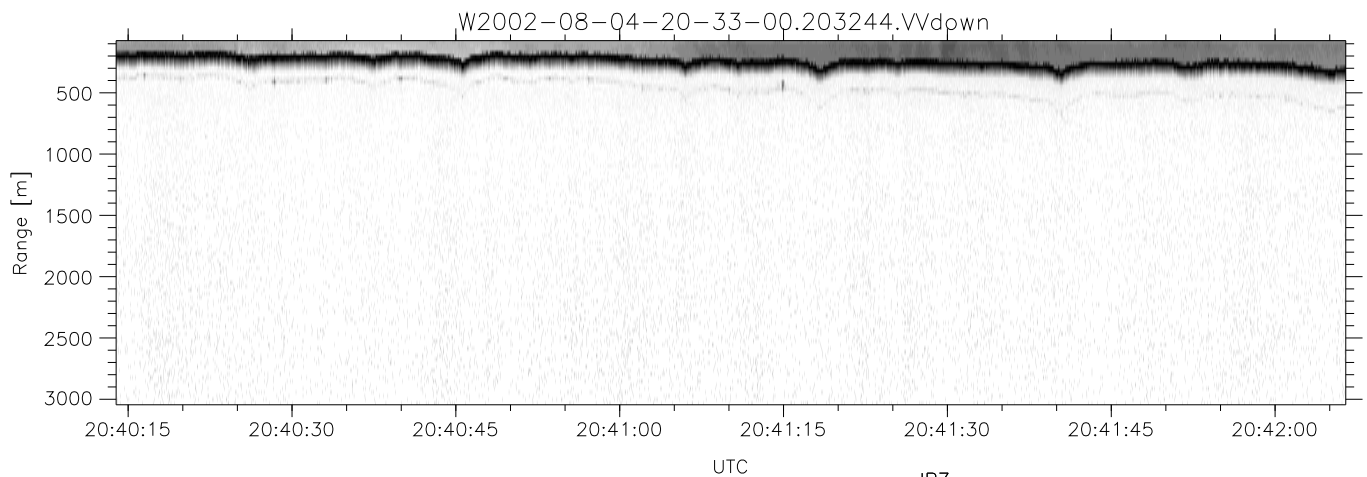
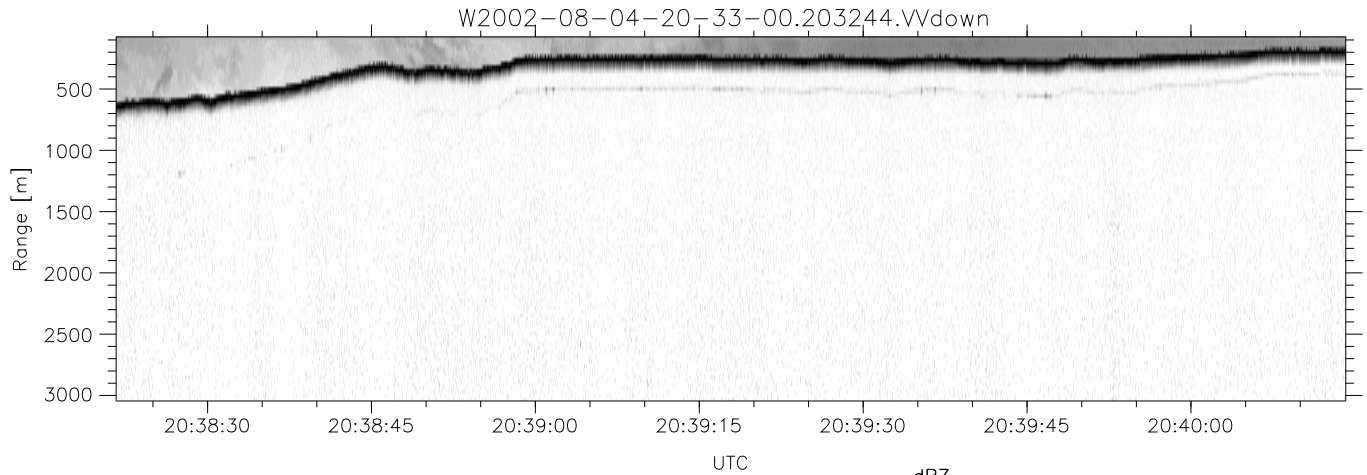


HiCu 2002 (dual-antenna config, modes 1,3,4,5,6,7) Data (cal: 55.0,50.0)

W2002-08-04-20-33-00 - SPPMAG  
 IRIG:1,UTC: 20:32:44.69 to 22:28:44.46, Dur: 6960s  
 TimeLngth: 6959.78s, TimeInt: 29ms (34.3pps)  
 TimeCor=-13.0s, DSPDif(mn,min,mx):29,28,292  
 PPS(min,max,std): 28,35,1.11  
 Prof: 433 to 238854, NumProf(t/r): 238421/34138  
 ProcTime/Recs: 20:32:44-20:49:21/0-34137  
 MxACQtime: 26ms; DRate: 55.3KB/s; Flags: 0, 0, 0  
 Pulse: 275ns, IFfilt: 5.0MHz; ppPol: VV  
 TxPol: V, PRF: 20 kHz  
 Range: Delay 75m, Spacing 30m, Gates 100  
 Ave. Pulses: 520, Rng/Prof Aspect@90m/s: 11.4

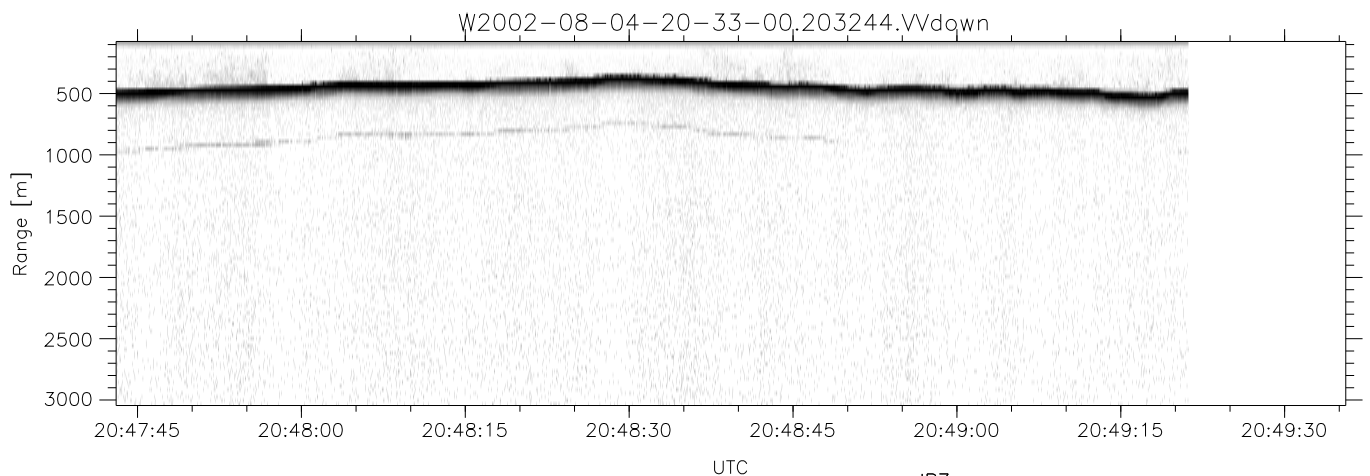
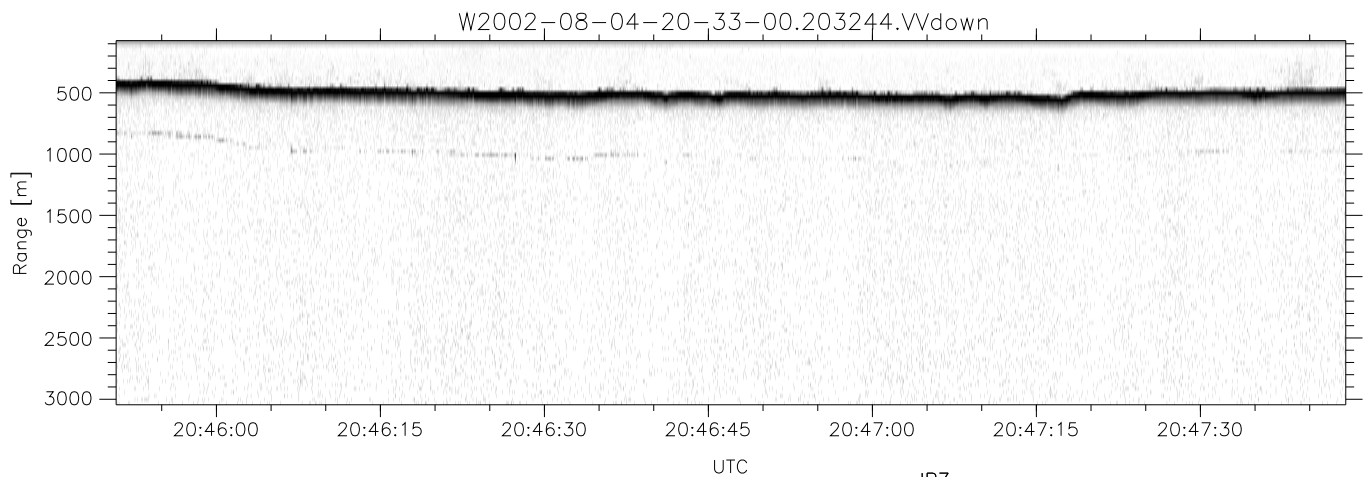
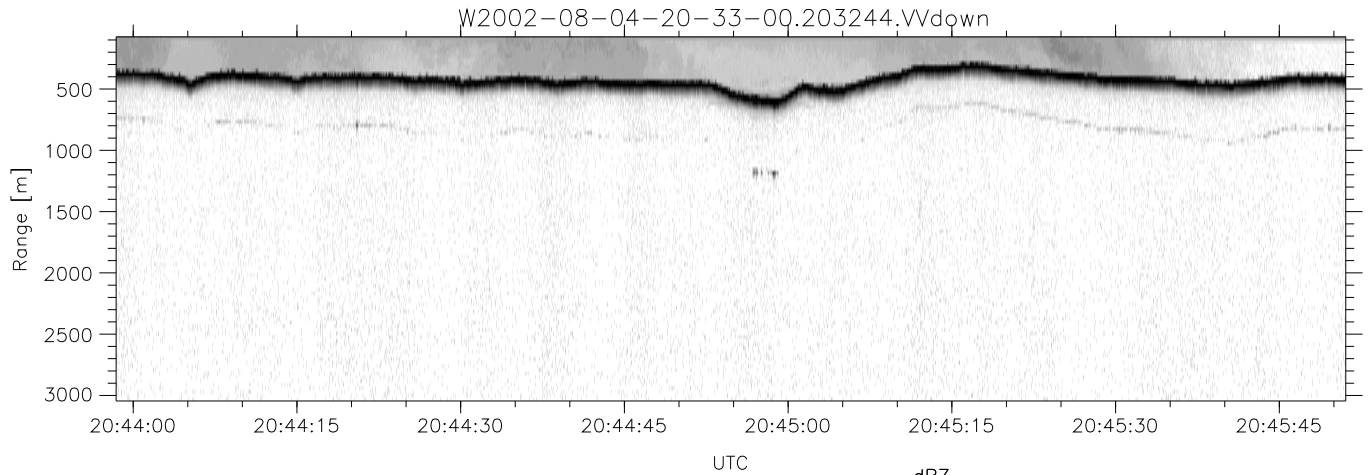
	Min	Max	Mean	Std	Varc%
hhN(dB)	-71.54	-70.10	-70.75	-84.63	4.1
vvN(dB)	-67.67	-66.04	-66.85	-80.36	4.5
vvL(dB)	-11.61	-5.74	-8.63	-16.61	15.9
hvL(dB)	-71.56	-70.00	-70.72	-84.61	4.1
ppN(m/s)	-15.80	15.80	0.04	9.01	
ppT(m/s)	-0.02	0.01	-0.00	0.00	
hv/vv(dB)	-NaN	-41.72	-62.00	-52.72	847.
hn_jmp(dB)			0.12		
vn_jmp(dB)			0.15		



HiCu 2002 (dual-antenna config, modes 1,3,4,5,6,7) Data (cal: 55.0,50.0)

W2002-08-04-20-33-00 - SPPMAG  
 IRIG:1,UTC: 20:32:44.69 to 22:28:44.46, Dur: 6960s  
 TimeLngth: 6959.78s, TimeInt: 29ms (34.3pps)  
 TimeCor=-13.0s, DSPDif(mn,min,mx):29,28,292  
 PPS(min,max,std): 28,35,1.11  
 Prof: 433 to 238854, NumProf(t/r): 238421/34138  
 ProcTime/Recs: 20:32:44-20:49:21/0-34137  
 MxACQtime: 26ms; DRate: 55.3KB/s; Flags: 0, 0, 0  
 Pulse: 275ns, IFfilt: 5.0MHz; ppPol: VV  
 TxPol: V, PRF: 20 kHz  
 Range: Delay 75m, Spacing 30m, Gates 100  
 Ave. Pulses: 520, Rng/Prof Aspect@90m/s: 11.4

	Min	Max	Mean	Std	Varc%
hhN(dB)	-71.54	-70.10	-70.75	-84.63	4.1
vvN(dB)	-67.67	-66.04	-66.85	-80.36	4.5
vvL(dB)	-11.61	-5.74	-8.63	-16.61	15.9
hvL(dB)	-71.56	-70.00	-70.72	-84.61	4.1
ppN(m/s)	-15.80	15.80	0.04	9.01	
ppT(m/s)	-0.02	0.01	-0.00	0.00	
hv/vv(dB)	-NaN	-41.72	-62.00	-52.72	847.
hn_jmp(dB)			0.12		
vn_jmp(dB)			0.15		



HiCu 2002 (dual-antenna config, modes 1,3,4,5,6,7) Data (cal: 55.0,50.0)

W2002-08-04-20-33-00 - SPPMAG  
 IRIG:1,UTC: 20:32:44.69 to 22:28:44.46, Dur: 6960s  
 TimeLngth: 6959.78s, TimeInt: 29ms (34.3pps)  
 TimeCor=-13.0s, DSPDif(mn,min,mx):29,28,292  
 PPS(min,max,std): 28,35,1.11  
 Prof: 433 to 238854, NumProf(t/r): 238421/34138  
 ProcTime/Recs: 20:32:44-20:49:21/0-34137  
 MxACQtime: 26ms; DRate: 55.3KB/s; Flags: 0, 0, 0  
 Pulse: 275ns, IFfilt: 5.0MHz; ppPol: VV  
 TxPol: V, PRF: 20 kHz  
 Range: Delay 75m, Spacing 30m, Gates 100  
 Ave. Pulses: 520, Rng/Prof Aspect@90m/s: 11.4

	Min	Max	Mean	Std	Varc%
hhN(dB)	-71.54	-70.10	-70.75	-84.63	4.1
vvN(dB)	-67.67	-66.04	-66.85	-80.36	4.5
vvL(dB)	-11.61	-5.74	-8.63	-16.61	15.9
hvL(dB)	-71.56	-70.00	-70.72	-84.61	4.1
ppN(m/s)	-15.80	15.80	0.04	9.01	
ppT(m/s)	-0.02	0.01	-0.00	0.00	
hv/vv(dB)	-NaN	-41.72	-62.00	-52.72	847.
hnjmp(dB)			0.12		
vnjmp(dB)			0.15		