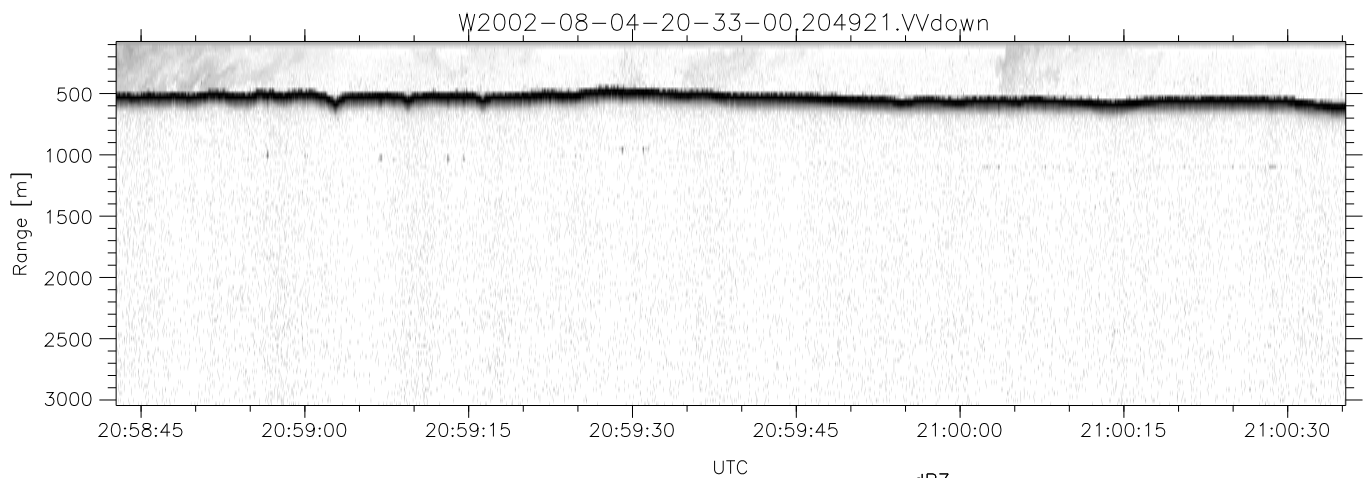
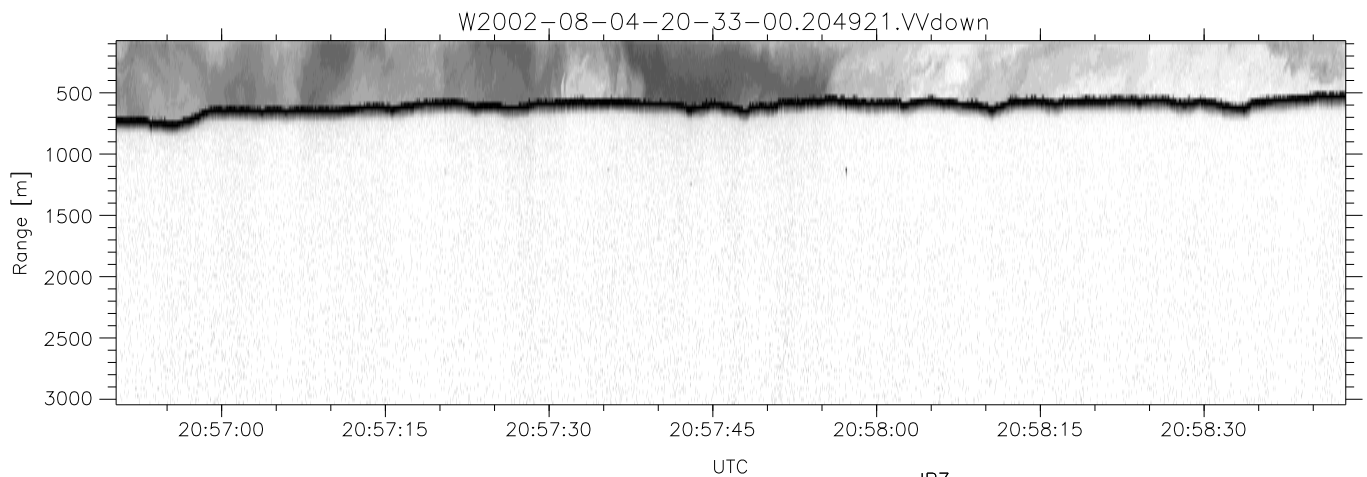
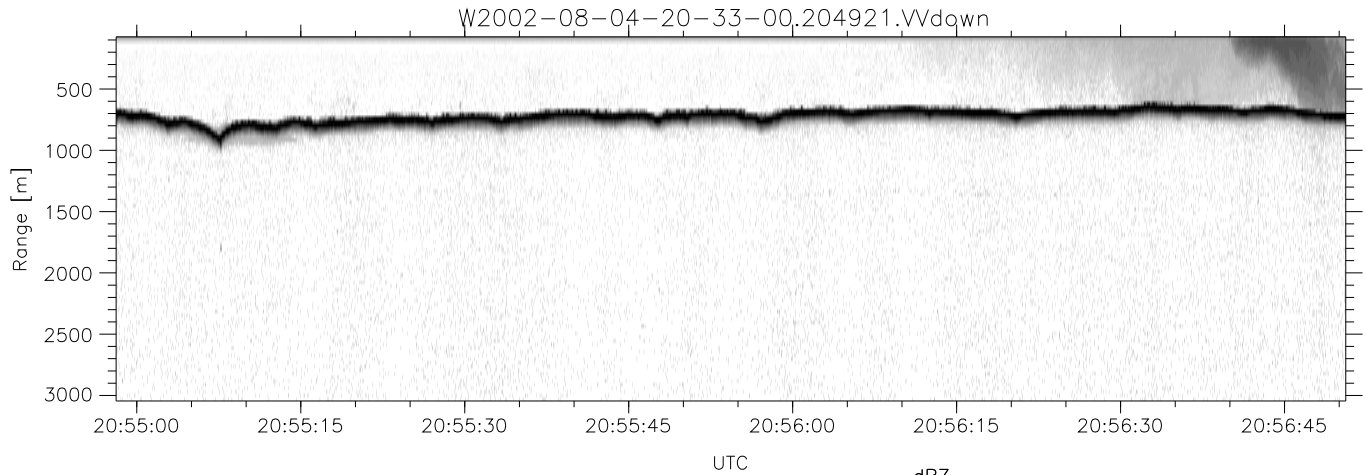


HiCu 2002 (dual-antenna config, modes 1,3,4,5,6,7) Data (cal: 55.0,50.0)

W2002-08-04-20-33-00 - SPPMAG
 IRIG:1,UTC: 20:32:44.69 to 22:28:44.46, Dur: 6960s
 TimeLngth: 6959.78s, TimeInt: 29ms (34.3pps)
 TimeCor=-13.0s, DSPDif(mn,min,mx):29,28,175
 PPS(min,max,std): 29,35,1.14
 Prof: 433 to 238854, NumProf(t/r): 238421/34138
 ProcTime/Recs: 20:49:21-21:05:57/34138-68275
 MxACQtime: 26ms; DRate: 55.3KB/s; Flags: 0, 0, 0
 Pulse: 275ns, IFfilt: 5.0MHz; ppPol: VV
 TxPol: V, PRF: 20 kHz
 Range: Delay 75m, Spacing 30m, Gates 100
 Ave. Pulses: 520, Rng/Prof Aspect@90m/s: 11.4

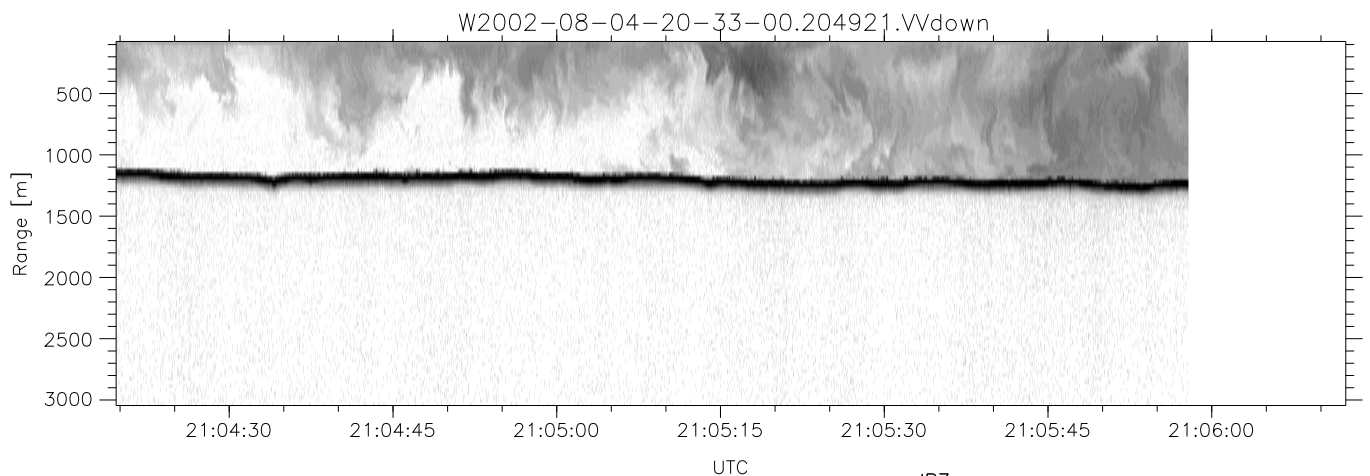
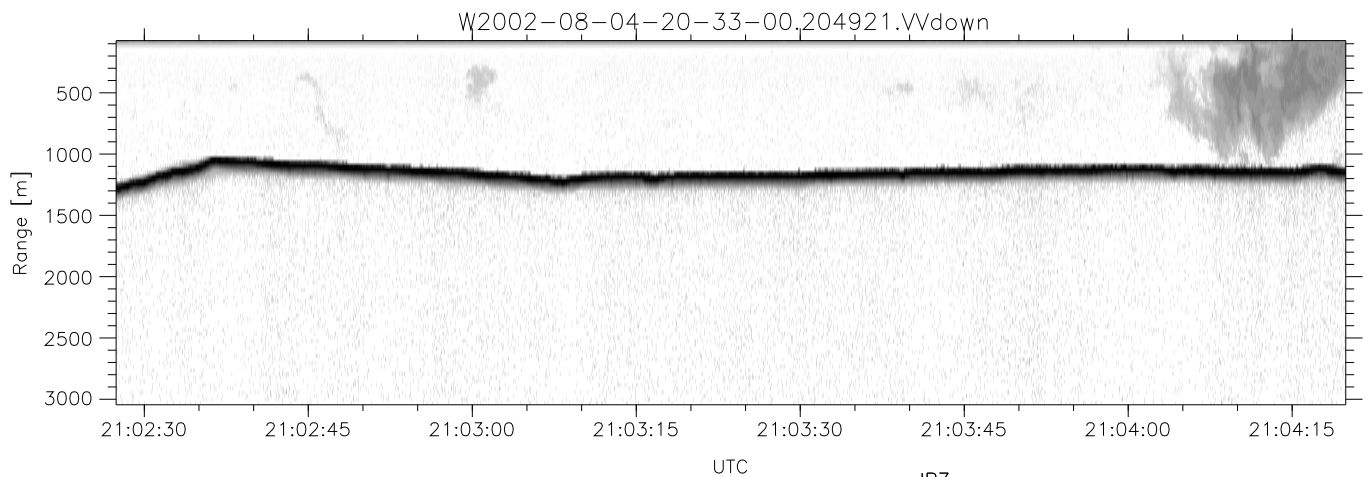
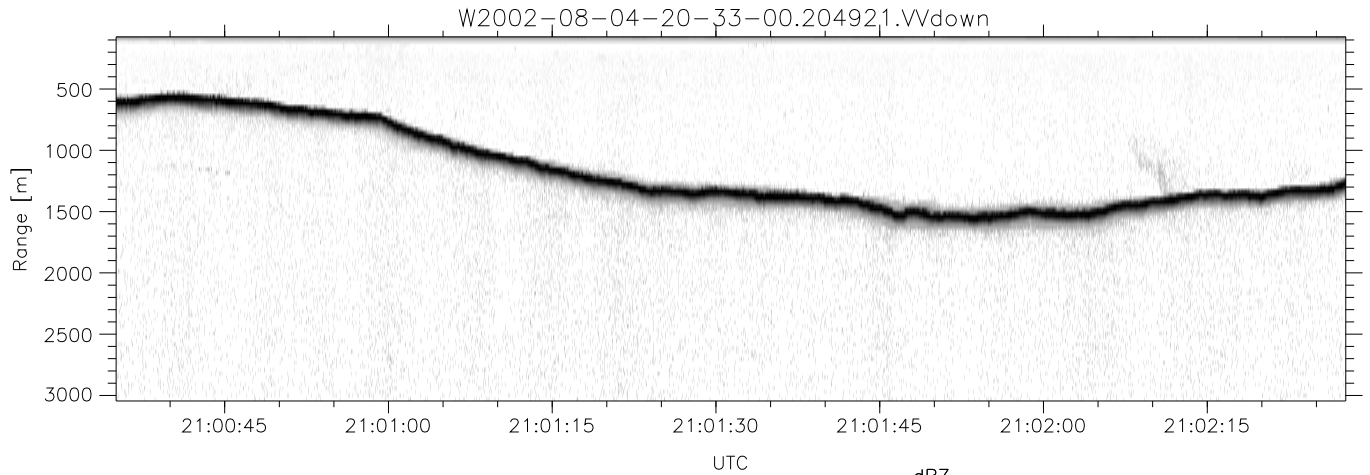
	Min	Max	Mean	Std	Varc%
hhN(dB)	-71.43	-70.08	-70.73	-84.61	4.1
vvN(dB)	-67.64	-66.04	-66.85	-80.18	4.6
vvL(dB)	-10.39	-2.52	-6.34	-10.74	36.4
hvL(dB)	-71.39	-69.96	-70.70	-84.57	4.1
ppN(m/s)	-15.80	15.80	-0.06	8.99	
ppT(m/s)	-0.01	0.01	-0.00	0.00	
hv/vv(dB)	-NaN	-42.56	-70.00	-52.57	5534
hn_jmp(dB)			0.12		
vn_jmp(dB)			0.15		



HiCu 2002 (dual-antenna config, modes 1,3,4,5,6,7) Data (cal: 55.0,50.0)

W2002-08-04-20-33-00 - SPPMAG
 IRIG:1,UTC: 20:32:44.69 to 22:28:44.46, Dur: 6960s
 TimeLngth: 6959.78s, TimeInt: 29ms (34.3pps)
 TimeCor=-13.0s, DSPDif(mn,min,mx):29,28,175
 PPS(min,max,std): 29,35,1.14
 Prof: 433 to 238854, NumProf(t/r): 238421/34138
 ProcTime/Recs: 20:49:21-21:05:57/34138-68275
 MxACQtime: 26ms; DRate: 55.3KB/s; Flags: 0, 0, 0
 Pulse: 275ns, IFfilt: 5.0MHz; ppPol: VV
 TxPol: V, PRF: 20 kHz
 Range: Delay 75m, Spacing 30m, Gates 100
 Ave. Pulses: 520, Rng/Prof Aspect@90m/s: 11.4

	Min	Max	Mean	Std	Varc%
hhN(dB)	-71.43	-70.08	-70.73	-84.61	4.1
vvN(dB)	-67.64	-66.04	-66.85	-80.18	4.6
vvL(dB)	-10.39	-2.52	-6.34	-10.74	36.4
hvL(dB)	-71.39	-69.96	-70.70	-84.57	4.1
ppN(m/s)	-15.80	15.80	-0.06	8.99	
ppT(m/s)	-0.01	0.01	-0.00	0.00	
hv/vv(dB)	-NaN	-42.56	-70.00	-52.57	5534
hn_jmp(dB)			0.12		
vn_jmp(dB)			0.15		



HiCu 2002 (dual-antenna config, modes 1,3,4,5,6,7) Data (cal: 55.0,50.0)

W2002-08-04-20-33-00 - SPPMAG
 IRIG:1,UTC: 20:32:44.69 to 22:28:44.46, Dur: 6960s
 TimeLngth: 6959.78s, TimeInt: 29ms (34.3pps)
 TimeCor=-13.0s, DSPDif(mn,min,mx):29,28,175
 PPS(min,max,std): 29,35,1.14
 Prof: 433 to 238854, NumProf(t/r): 238421/34138
 ProcTime/Recs: 20:49:21-21:05:57/34138-68275
 MxACQtime: 26ms; DRate: 55.3KB/s; Flags: 0, 0, 0
 Pulse: 275ns, IFfilt: 5.0MHz; ppPol: VV
 TxPol: V, PRF: 20 kHz
 Range: Delay 75m, Spacing 30m, Gates 100
 Ave. Pulses: 520, Rng/Prof Aspect@90m/s: 11.4

	Min	Max	Mean	Std	Varc%
hhN(dB)	-71.43	-70.08	-70.73	-84.61	4.1
vvN(dB)	-67.64	-66.04	-66.85	-80.18	4.6
vvL(dB)	-10.39	-2.52	-6.34	-10.74	36.4
hvL(dB)	-71.39	-69.96	-70.70	-84.57	4.1
ppN(m/s)	-15.80	15.80	-0.06	8.99	
ppT(m/s)	-0.01	0.01	-0.00	0.00	
hv/vv(dB)	-NaN	-42.56	-70.00	-52.57	5534
hnjmp(dB)			0.12		
vnjmp(dB)			0.15		