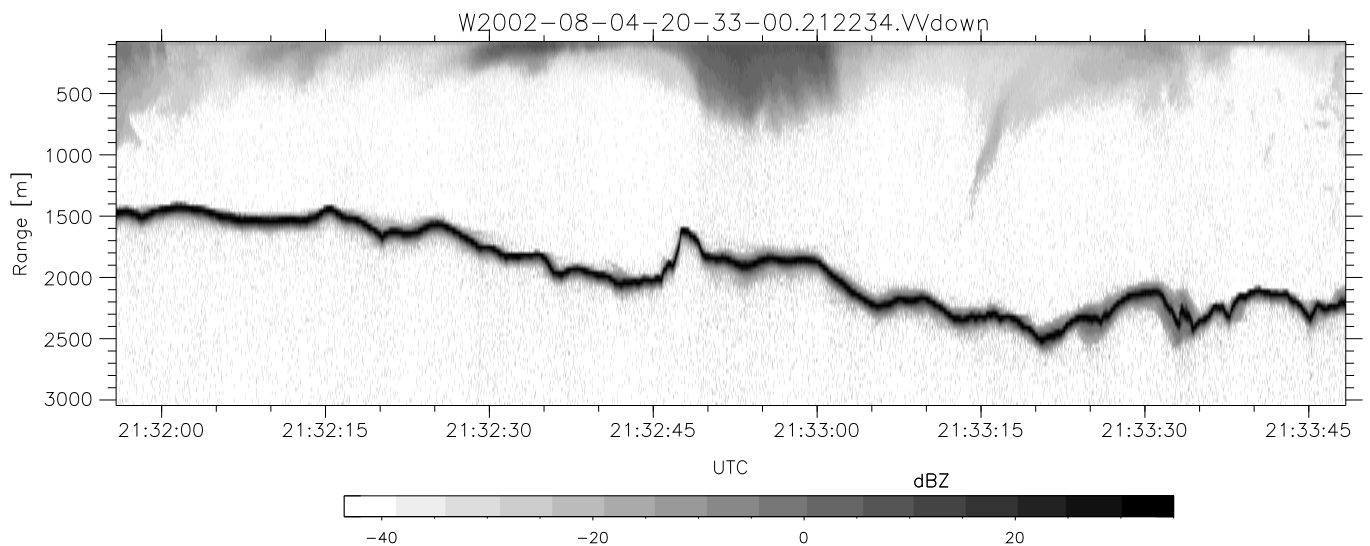
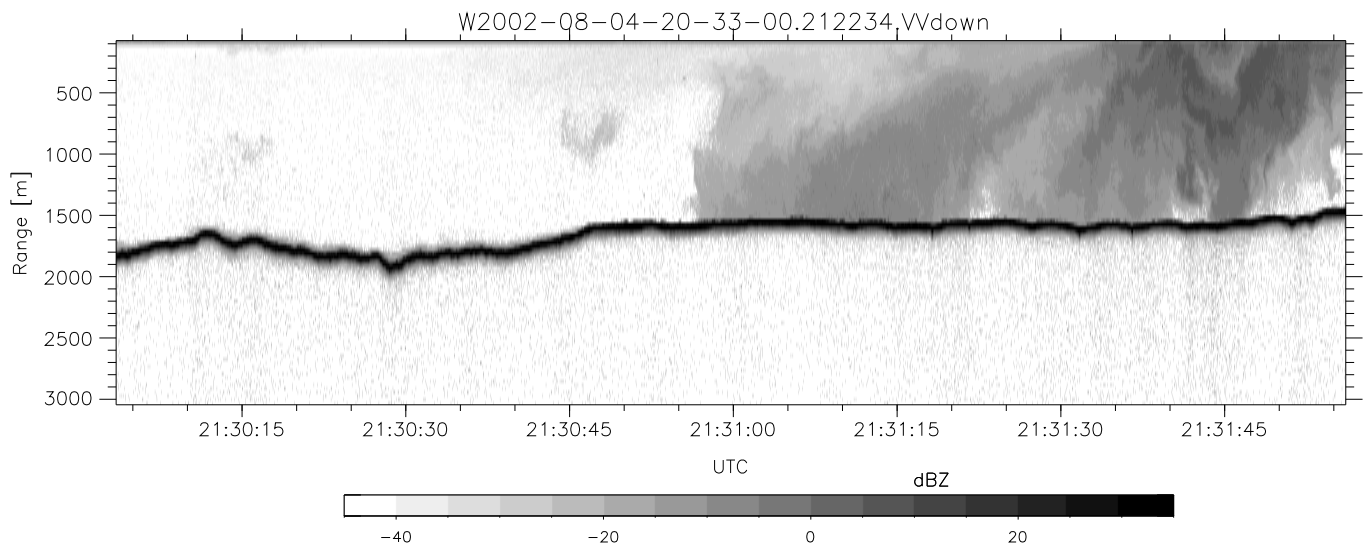
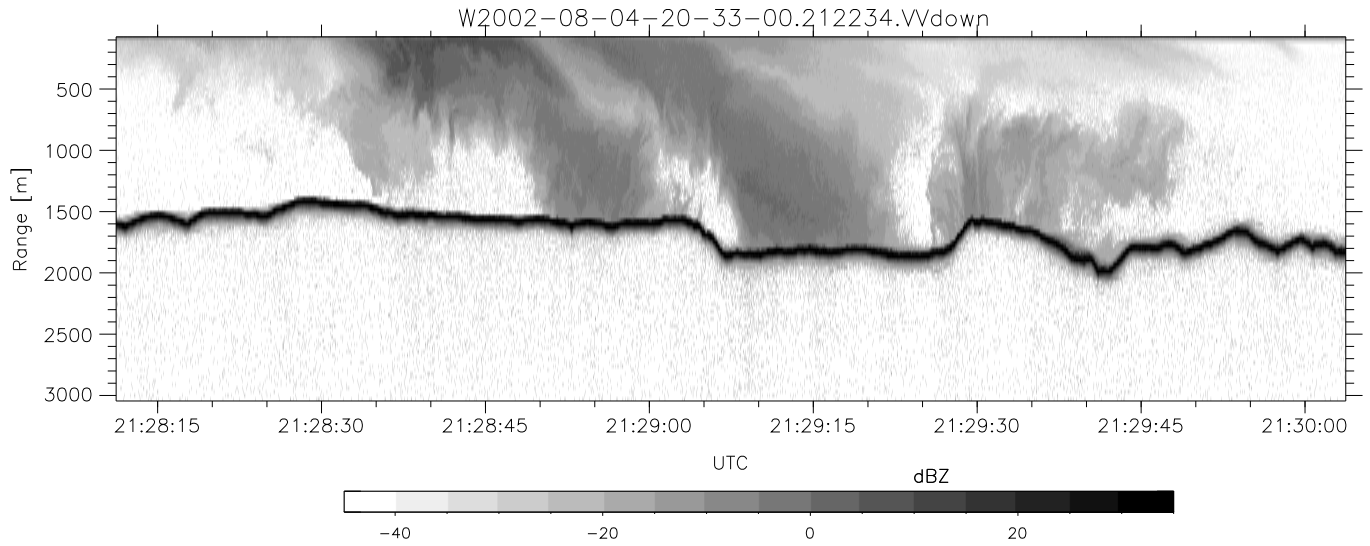


HiCu 2002 (dual-antenna config, modes 1,3,4,5,6,7) Data (cal: 55.0,50.0)

W2002-08-04-20-33-00 - SPPMAG
 IRIG:1,UTC: 20:32:44.69 to 22:28:44.46, Dur: 6960s
 TimeLngth: 6959.78s, TimeInt: 29ms (34.3pps)
 TimeCor=-13.0s, DSPDif(mn,min,mx):29,28,178
 PPS(min,max,std): 29,35,1.11
 Prof: 433 to 238854, NumProf(t/r): 238421/34138
 ProcTime/Recs: 21:22:34-21:39:10/102414-136551
 MxACQtime: 26ms; DRate: 55.3KB/s; Flags: 0, 0, 0
 Pulse: 275ns, IFfilt: 5.0MHz; ppPol: VV
 TxPol: V, PRF: 20 kHz
 Range: Delay 75m, Spacing 30m, Gates 100
 Ave. Pulses: 520, Rng/Prof Aspect@90m/s: 11.4

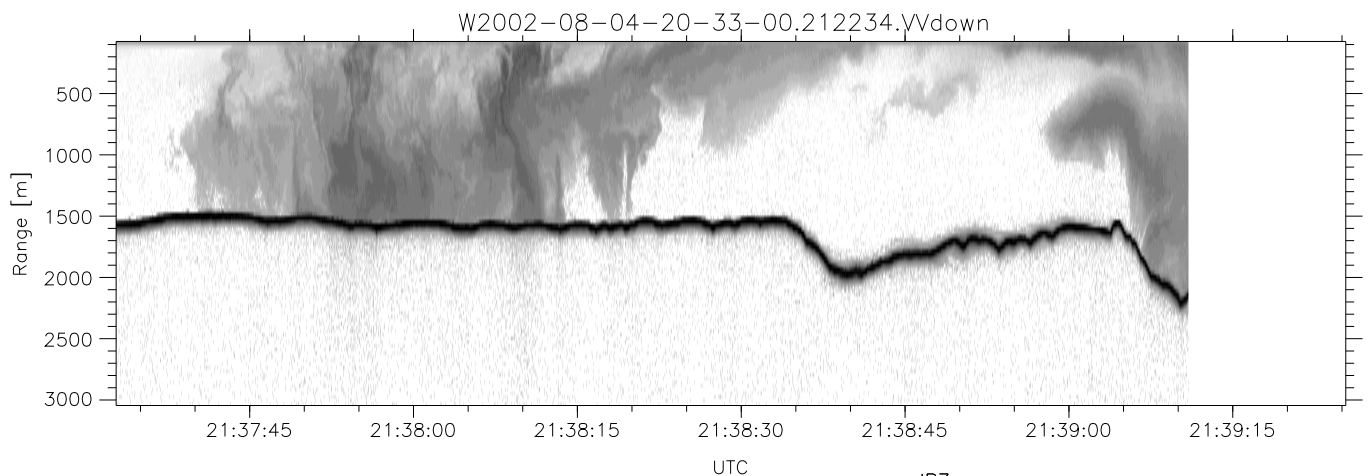
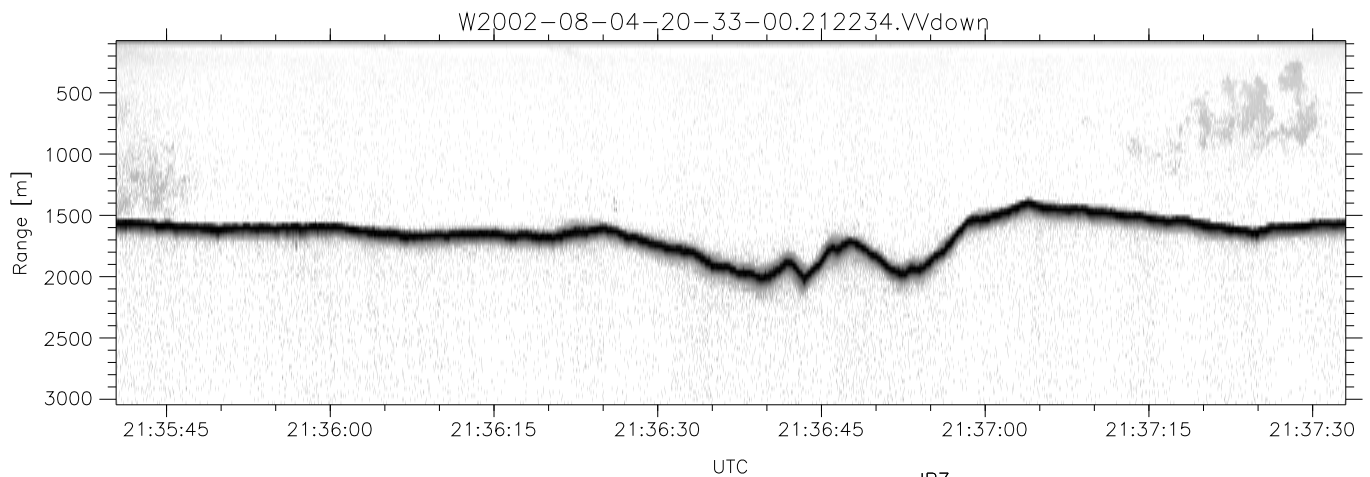
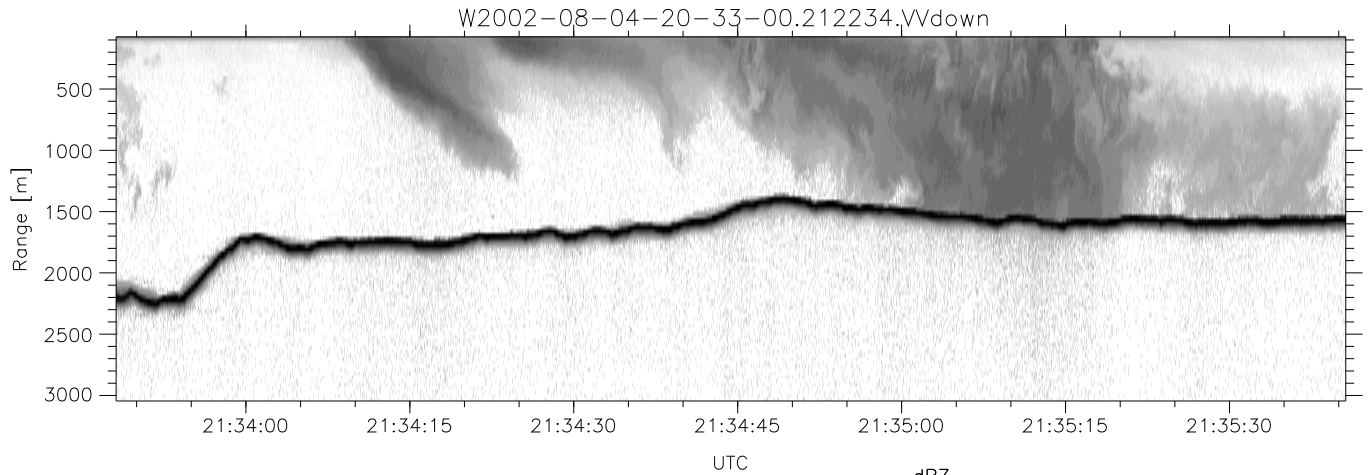
| | Min | Max | Mean | Std | Varc% |
|------------|--------|--------|--------|--------|-------|
| hhN(dB) | -71.43 | -70.05 | -70.70 | -84.58 | 4.1 |
| vvN(dB) | -67.58 | -65.80 | -66.72 | -79.59 | 5.2 |
| vvL(dB) | -7.95 | -2.81 | -4.58 | -12.36 | 16.7 |
| hvL(dB) | -71.39 | -70.01 | -70.67 | -84.56 | 4.1 |
| ppN(m/s) | -15.79 | 15.80 | 0.00 | 9.00 | |
| ppT(m/s) | -0.02 | 0.01 | -0.00 | 0.00 | |
| hv/vv(dB) | -NaN | -41.23 | -61.25 | -52.14 | 81.4 |
| hn_jmp(dB) | | | | 0.12 | |
| vn_jmp(dB) | | | | 0.16 | |



HiCu 2002 (dual-antenna config, modes 1,3,4,5,6,7) Data (cal: 55.0,50.0)

W2002-08-04-20-33-00 - SPPMAG
 IRIG:1,UTC: 20:32:44.69 to 22:28:44.46, Dur: 6960s
 TimeLngth: 6959.78s, TimeInt: 29ms (34.3pps)
 TimeCor=-13.0s, DSPDif(mn,min,mx):29,28,178
 PPS(min,max,std): 29,35,1.11
 Prof: 433 to 238854, NumProf(t/r): 238421/34138
 ProcTime/Recs: 21:22:34-21:39:10/102414-136551
 MxACQtime: 26ms; DRate: 55.3KB/s; Flags: 0, 0, 0
 Pulse: 275ns, IFfilt: 5.0MHz; ppPol: VV
 TxPol: V, PRF: 20 kHz
 Range: Delay 75m, Spacing 30m, Gates 100
 Ave. Pulses: 520, Rng/Prof Aspect@90m/s: 11.4

| | Min | Max | Mean | Std | Varc% |
|------------|--------|--------|--------|--------|-------|
| hhN(dB) | -71.43 | -70.05 | -70.70 | -84.58 | 4.1 |
| vvN(dB) | -67.58 | -65.80 | -66.72 | -79.59 | 5.2 |
| vvL(dB) | -7.95 | -2.81 | -4.58 | -12.36 | 16.7 |
| hvL(dB) | -71.39 | -70.01 | -70.67 | -84.56 | 4.1 |
| ppN(m/s) | -15.79 | 15.80 | 0.00 | 9.00 | |
| ppT(m/s) | -0.02 | 0.01 | -0.00 | 0.00 | |
| hv/vv(dB) | -NaN | -41.23 | -61.25 | -52.14 | 81.4 |
| hn_jmp(dB) | | | 0.12 | | |
| vn_jmp(dB) | | | 0.16 | | |



HiCu 2002 (dual-antenna config, modes 1,3,4,5,6,7) Data (cal: 55.0,50.0)

W2002-08-04-20-33-00 - SPPMAG
 IRIG:1,UTC: 20:32:44.69 to 22:28:44.46, Dur: 6960s
 TimeLngth: 6959.78s, TimeInt: 29ms (34.3pps)
 TimeCor=-13.0s, DSPDif(mn,min,mx):29,28,178
 PPS(min,max,std): 29,35,1.11
 Prof: 433 to 238854, NumProf(t/r): 238421/34138
 ProcTime/Recs: 21:22:34-21:39:10/102414-136551
 MxACQtime: 26ms; DRate: 55.3KB/s; Flags: 0, 0, 0
 Pulse: 275ns, IFfilt: 5.0MHz; ppPol: VV
 TxPol: V, PRF: 20 kHz
 Range: Delay 75m, Spacing 30m, Gates 100
 Ave. Pulses: 520, Rng/Prof Aspect@90m/s: 11.4

| | Min | Max | Mean | Std | Varc% |
|------------|--------|--------|--------|--------|-------|
| hhN(dB) | -71.43 | -70.05 | -70.70 | -84.58 | 4.1 |
| vvN(dB) | -67.58 | -65.80 | -66.72 | -79.59 | 5.2 |
| vvL(dB) | -7.95 | -2.81 | -4.58 | -12.36 | 16.7 |
| hvL(dB) | -71.39 | -70.01 | -70.67 | -84.56 | 4.1 |
| ppN(m/s) | -15.79 | 15.80 | 0.00 | 9.00 | |
| ppT(m/s) | -0.02 | 0.01 | -0.00 | 0.00 | |
| hv/vv(dB) | -NaN | -41.23 | -61.25 | -52.14 | 81.4 |
| hn_jmp(dB) | | | 0.12 | | |
| vn_jmp(dB) | | | 0.16 | | |