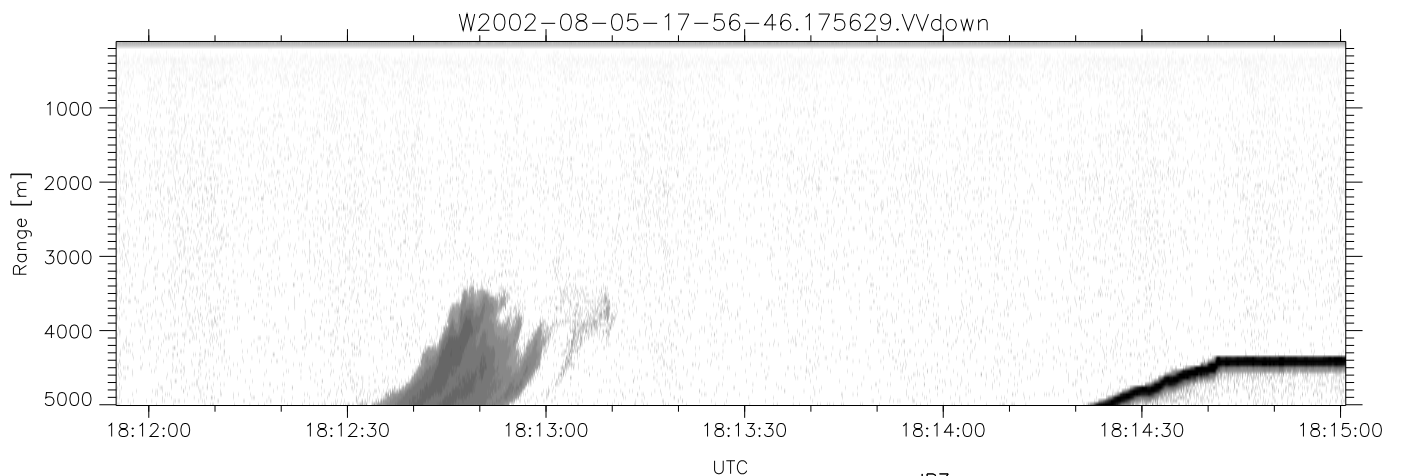
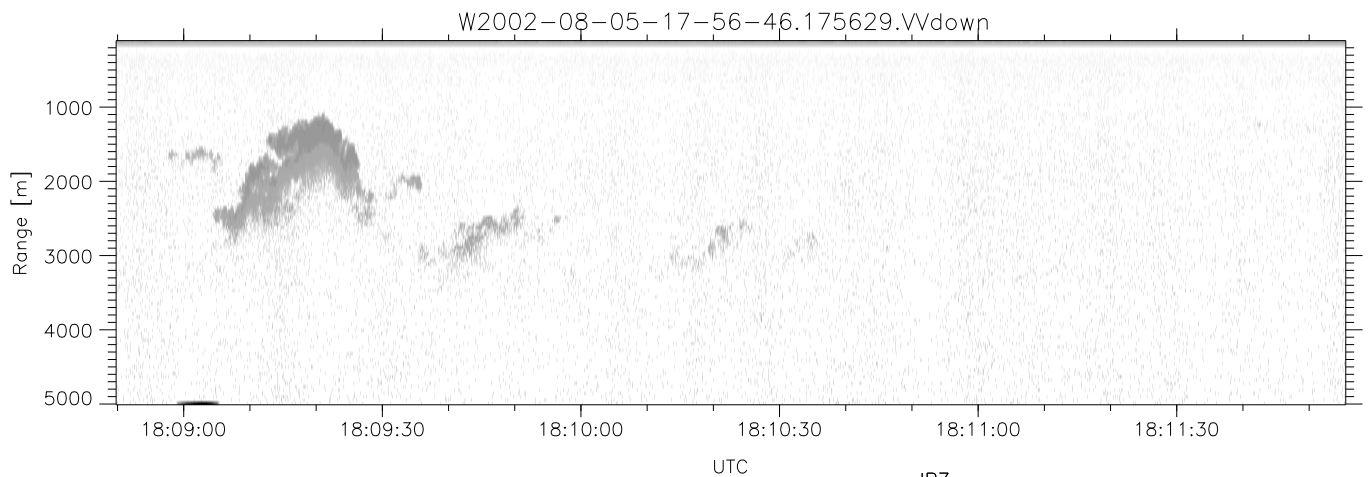
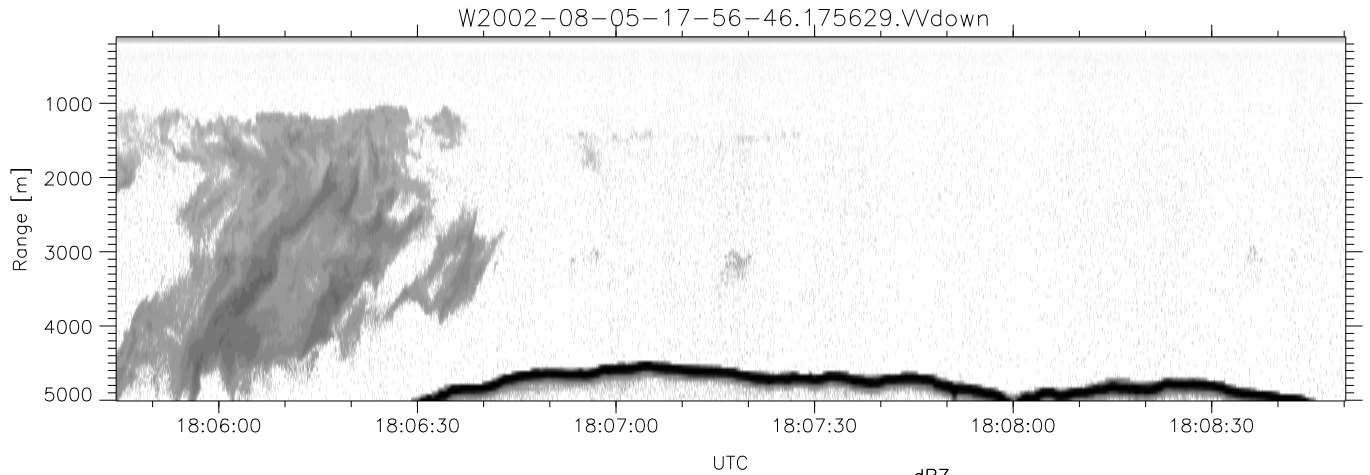


HiCu 2002 (dual-antenna config, modes 1,3,4,5,6,7) Data (cal: 55.0,50.0)

W2002-08-05-17-56-46 - SPPMAG
 IRIG:1,UTC: 17:56:29.07 to 18:24:45.70, Dur: 1696s
 TimeLngth: 1696.63s, TimeInt: 51ms (19.5pps)
 TimeCor=-13.0s, DSPDif(mn,min,mx):52,50,621
 PPS(min,max,std): 9,20,0.82
 Prof: 728 to 33739, NumProf(t/r): 33011/31477
 ProcTime/Recs: 17:56:29-18:23:26/0-31476
 MxACQtime: 47ms; DRate: 34.4KB/s; Flags: 0, 0, 0
 Pulse: 575ns, IFfilt: 2.0MHz; ppPol: VV
 TxPol: V, PRF: 10 kHz
 Range: Delay 105m, Spacing 45m, Gates 110
 Ave. Pulses: 476, Rng/Prof Aspect@90m/s: 9.7

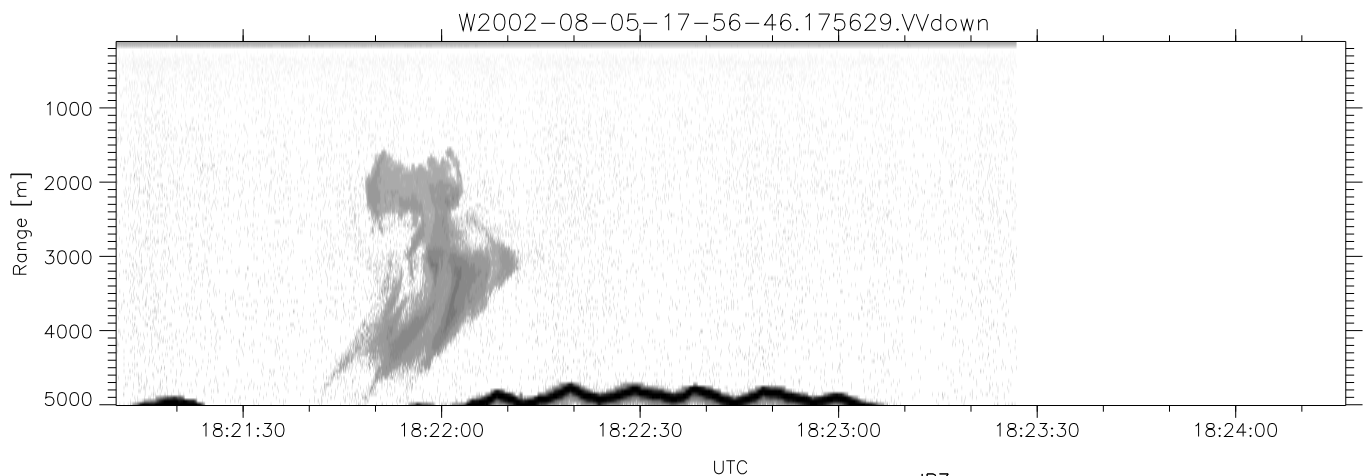
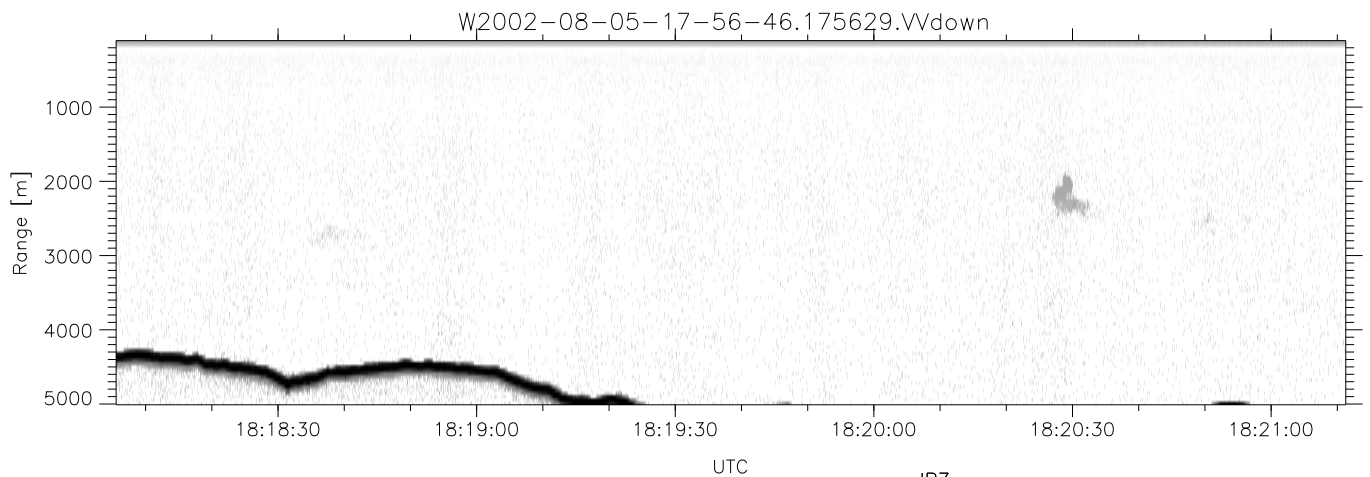
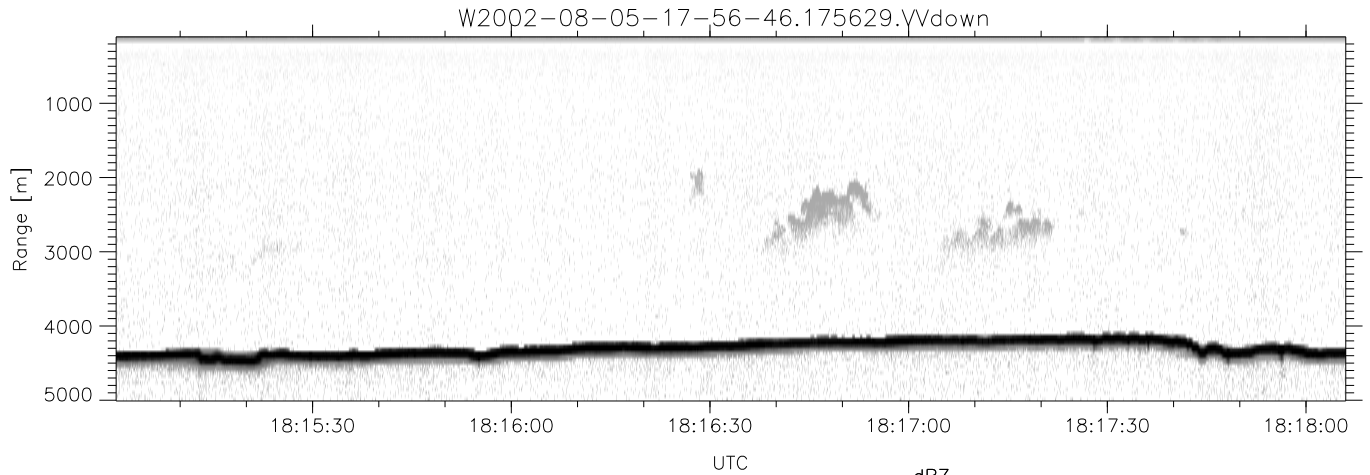
	Min	Max	Mean	Std	Varc%
hhN(dB)	-75.34	-73.90	-74.68	-88.33	4.3
vvN(dB)	-71.42	-69.00	-70.48	-82.36	6.5
vvL(dB)	-20.67	-7.60	-10.27	-14.74	35.6
hvL(dB)	-75.40	-73.92	-74.64	-88.22	4.4
ppN(m/s)	-7.90	7.90	-0.01	4.45	
ppT(m/s)	-0.05	0.04	-0.00	0.01	
hv/vv(dB)	-NaN	-46.51	-NaN	-54.57	-168
hn_jmp(dB)				-0.10	
vn_jmp(dB)				-0.17	



HiCu 2002 (dual-antenna config, modes 1,3,4,5,6,7) Data (cal: 55.0,50.0)

W2002-08-05-17-56-46 - SPPMAG
 IRIG:1,UTC: 17:56:29.07 to 18:24:45.70, Dur: 1696s
 TimeLngth: 1696.63s, TimeInt: 51ms (19.5pps)
 TimeCor=-13.0s, DSPDif(mn,min,mx):52,50,621
 PPS(min,max,std): 9,20,0.82
 Prof: 728 to 33739, NumProf(t/r): 33011/31477
 ProcTime/Recs: 17:56:29-18:23:26/0-31476
 MxACQtime: 47ms; DRate: 34.4KB/s; Flags: 0, 0, 0
 Pulse: 575ns, IFfilt: 2.0MHz; ppPol: VV
 TxPol: V, PRF: 10 kHz
 Range: Delay 105m, Spacing 45m, Gates 110
 Ave. Pulses: 476, Rng/Prof Aspect@90m/s: 9.7

	Min	Max	Mean	Std	Varc%
hhN(dB)	-75.34	-73.90	-74.68	-88.33	4.3
vvN(dB)	-71.42	-69.00	-70.48	-82.36	6.5
vvL(dB)	-20.67	-7.60	-10.27	-14.74	35.6
hvL(dB)	-75.40	-73.92	-74.64	-88.22	4.4
ppN(m/s)	-7.90	7.90	-0.01	4.45	
ppT(m/s)	-0.05	0.04	-0.00	0.01	
hv/vv(dB)	-NaN	-46.51	-NaN	-54.57	-168
hn_jmp(dB)				-0.10	
vn_jmp(dB)				-0.17	



HiCu 2002 (dual-antenna config, modes 1,3,4,5,6,7) Data (cal: 55.0,50.0)

W2002-08-05-17-56-46 - SPPMAG
 IRIG:1,UTC: 17:56:29.07 to 18:24:45.70, Dur: 1696s
 TimeLngth: 1696.63s, TimeInt: 51ms (19.5pps)
 TimeCor=-13.0s, DSPDif(mn,min,mx):52,50,621
 PPS(min,max,std): 9,20,0.82
 Prof: 728 to 33739, NumProf(t/r): 33011/31477
 ProcTime/Recs: 17:56:29-18:23:26/0-31476
 MxACQtime: 47ms; DRate: 34.4KB/s; Flags: 0, 0, 0
 Pulse: 575ns, IFfilt: 2.0MHz; ppPol: VV
 TxPol: V, PRF: 10 kHz
 Range: Delay 105m, Spacing 45m, Gates 110
 Ave. Pulses: 476, Rng/Prof Aspect@90m/s: 9.7

	Min	Max	Mean	Std	Varc%
hhN(dB)	-75.34	-73.90	-74.68	-88.33	4.3
vvN(dB)	-71.42	-69.00	-70.48	-82.36	6.5
vvL(dB)	-20.67	-7.60	-10.27	-14.74	35.6
hvL(dB)	-75.40	-73.92	-74.64	-88.22	4.4
ppN(m/s)	-7.90	7.90	-0.01	4.45	
ppT(m/s)	-0.05	0.04	-0.00	0.01	
hv/vv(dB)	-NaN	-46.51	-NaN	-54.57	-168
hn_jmp(dB)				-0.10	
vn_jmp(dB)				-0.17	