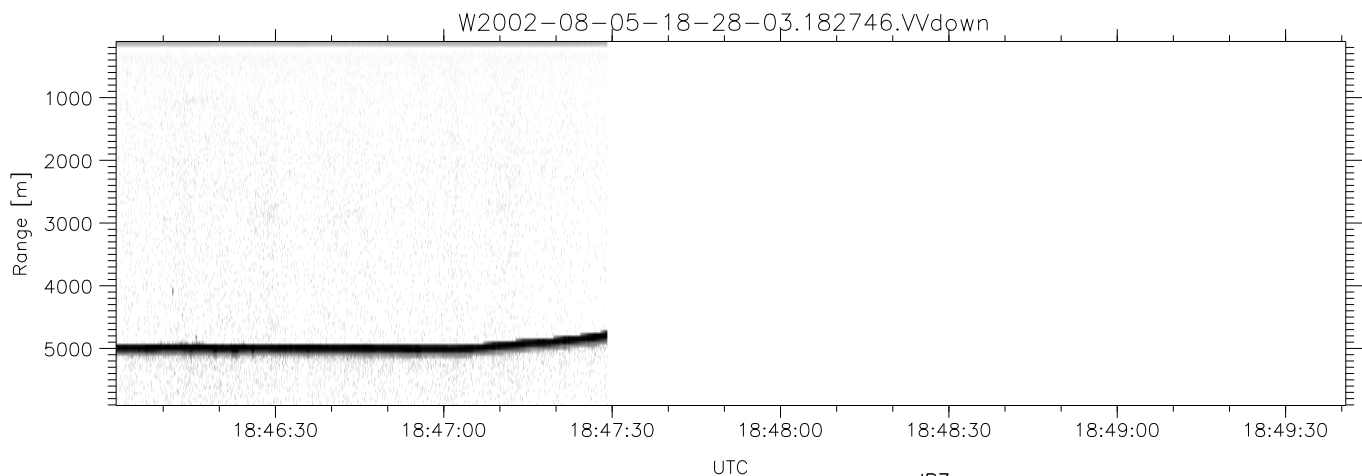
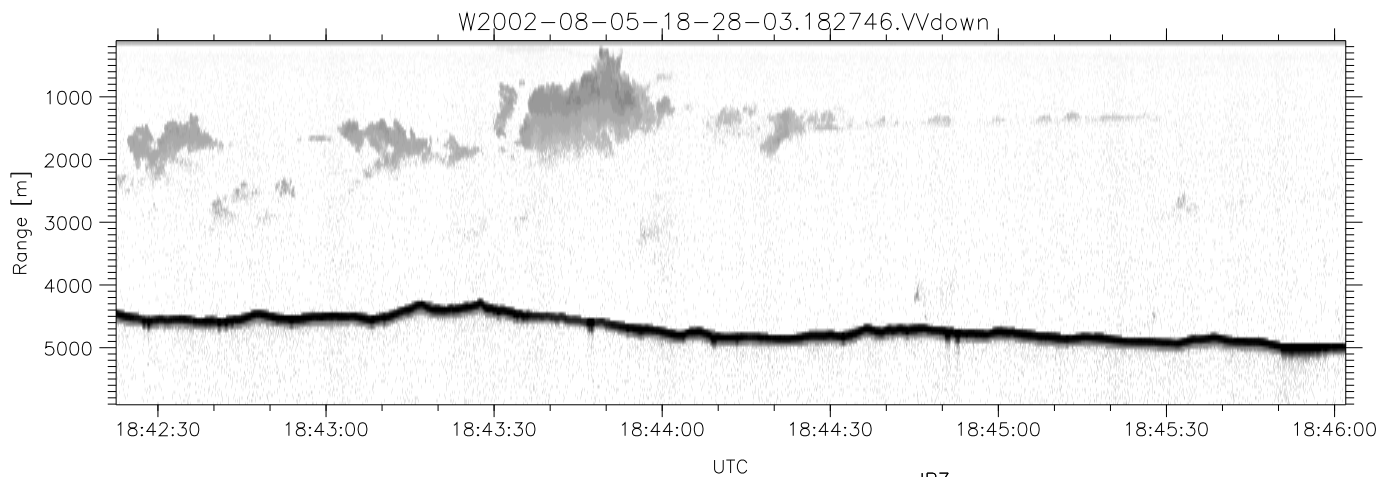
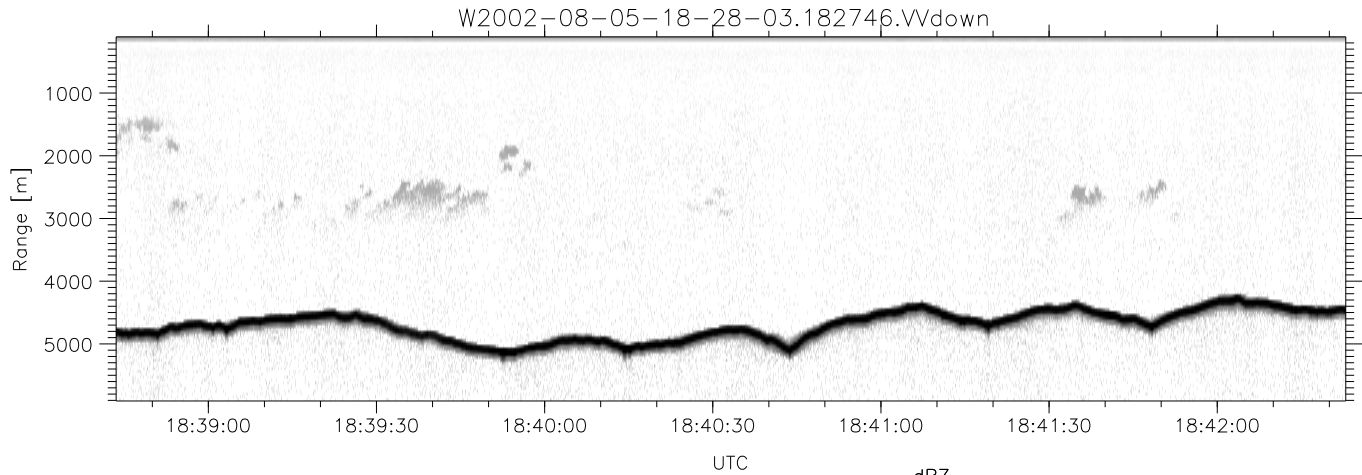


HiCu 2002 (dual-antenna config, modes 1,3,4,5,6,7) Data (cal: 55.0,50.0)

W2002-08-05-18-28-03 - SPPMAG
 IRIG:1,UTC: 18:27:46.16 to 18:47:29.11, Dur: 1183s
 TimeLngth: 1182.95s, TimeInt: 44ms (22.5pps)
 TimeCor=-13.0s, DSPDif(mn,min,mx):44,43,195
 PPS(min,max,std): 14,24,1.25
 Prof: 159 to 26749, NumProf(t/r): 26590/26590
 MxACQtime: 40ms; DRate: 46.8KB/s; Flags: 0, 0, 0
 Pulse: 575ns, IFfilt: 2.0MHz; ppPol: VV
 TxPol: V, PRF: 10 kHz
 Range: Delay 105m, Spacing 45m, Gates 130
 Ave. Pulses: 404, Rng/Prof Aspect@90m/s: 11.2

	Min	Max	Mean	Std	Varc%
hhN(dB)	-75.61	-74.40	-74.98	-89.32	3.7
vvN(dB)	-76.10	-68.96	-70.78	-80.37	11.0
vvL(dB)	-54.28	-5.43	-7.91	-15.85	16.1
hvL(dB)	-75.53	-74.20	-74.96	-89.28	3.7
ppN(m/s)	-7.90	7.90	0.00	4.41	
ppT(m/s)	-0.04	0.08	-0.00	0.01	
hv/vv(dB)	-NaN	-46.99	-NaN	-56.11	-199
hnjmp(dB)			0.09		
vnjmp(dB)			0.17		



HiCu 2002 (dual-antenna config, modes 1,3,4,5,6,7) Data (cal: 55.0,50.0)

W2002-08-05-18-28-03 - SPPMAG
 IRIG:1,UTC: 18:27:46.16 to 18:47:29.11, Dur: 1183s
 TimeLngth: 1182.95s, TimeInt: 44ms (22.5pps)
 TimeCor=-13.0s, DSPDif(mn,min,mx):44,43,195
 PPS(min,max,std): 14,24,1.25
 Prof: 159 to 26749, NumProf(t/r): 26590/26590
 MxACQtime: 40ms; DRate: 46.8KB/s; Flags: 0, 0, 0
 Pulse: 575ns, IFfilt: 2.0MHz; ppPol: VV
 TxPol: V, PRF: 10 kHz
 Range: Delay 105m, Spacing 45m, Gates 130
 Ave. Pulses: 404, Rng/Prof Aspect@90m/s: 11.2

	Min	Max	Mean	Std	Varc%
hhN(dB)	-75.61	-74.40	-74.98	-89.32	3.7
vvN(dB)	-76.10	-68.96	-70.78	-80.37	11.0
vvL(dB)	-54.28	-5.43	-7.91	-15.85	16.1
hvL(dB)	-75.53	-74.20	-74.96	-89.28	3.7
ppN(m/s)	-7.90	7.90	0.00	4.41	
ppT(m/s)	-0.04	0.08	-0.00	0.01	
hv/vv(dB)	-NaN	-46.99	-NaN	-56.11	-199
hnjmp(dB)			0.09		
vnjmp(dB)			0.17		