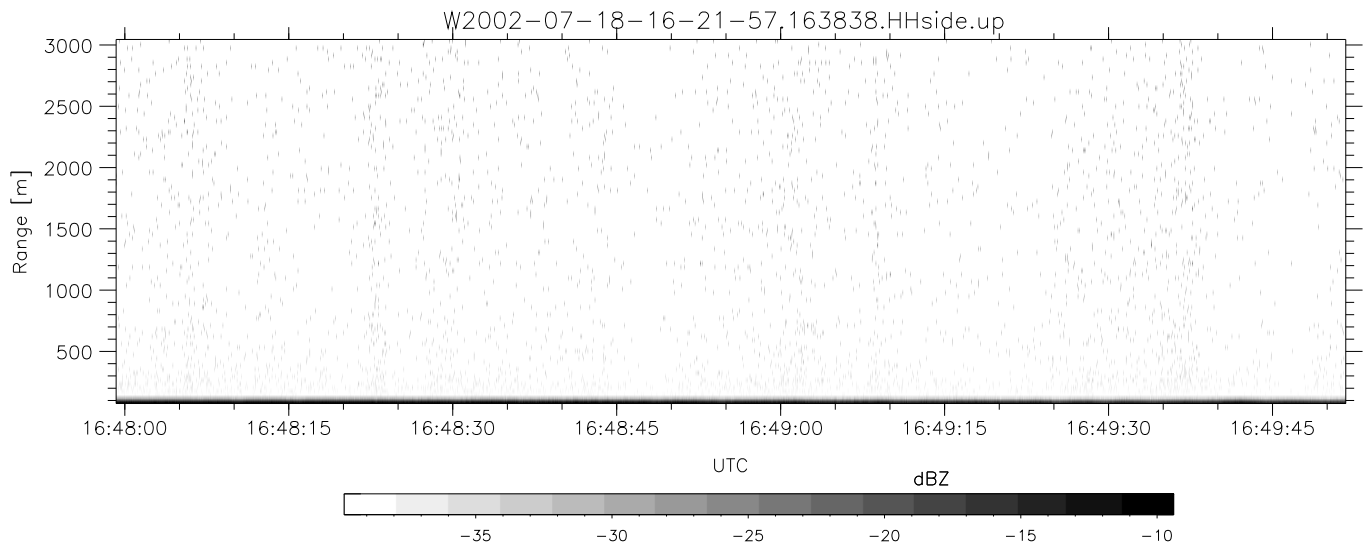
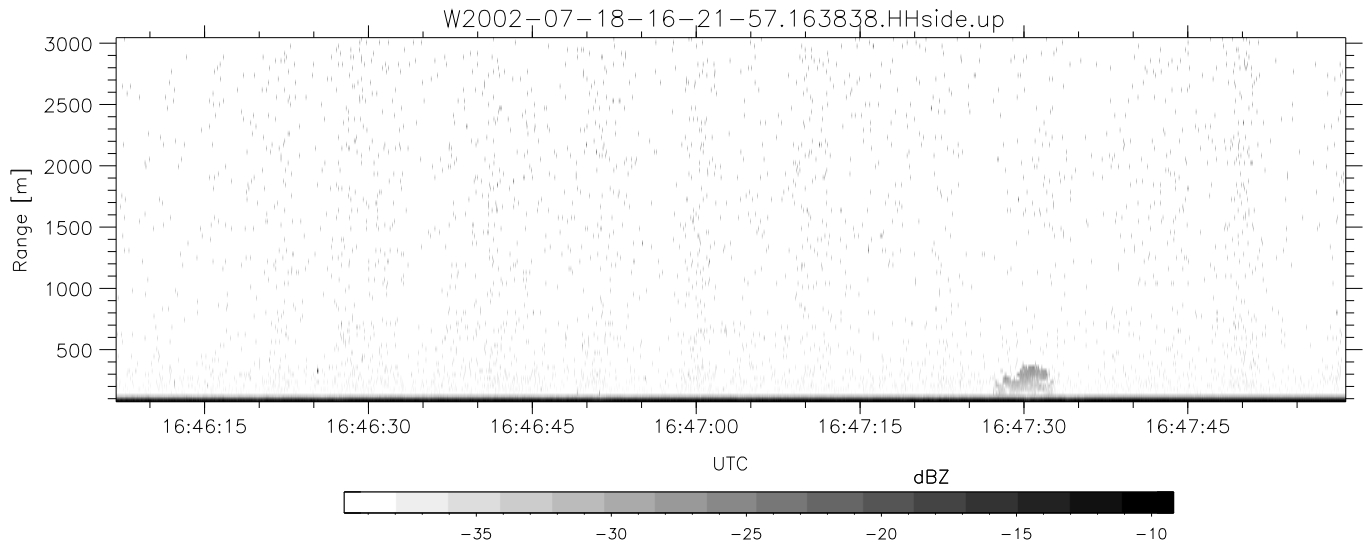
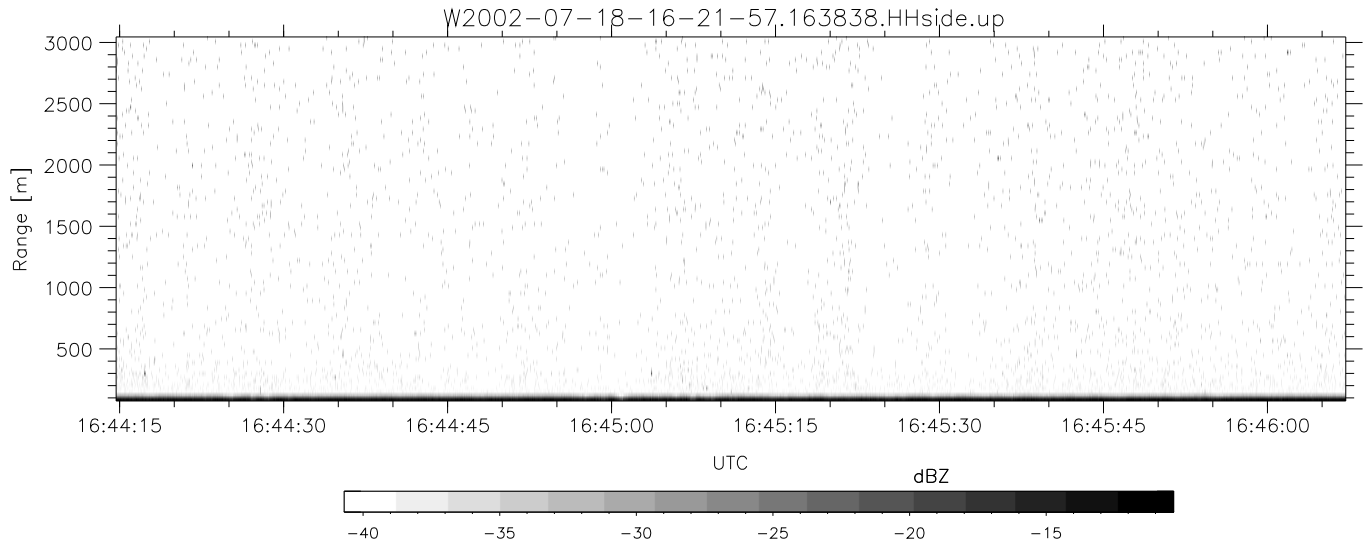


HiCu 2002 (dual-antenna config, modes 1,3,4,5,6,7) Data (cal: 49.0,50.0)

W2002-07-18-16-21-57 - PPMAG4
 IRIG:1,UTC: 16:21:55.58 to 16:53:08.86, Dur: 1873s
 TimeLngth: 1873.28s, TimeInt: 29ms (34.1pps)
 TimeCor=-13.0s, DSPDif(mn,min,mx):29,28,197
 PPS(min,max,std): 29,36,2.10
 Prof: 3973 to 67788, NumProf(t/r): 63815/29677
 ProcTime/Recs: 16:38:38-16:53:08/34138-63814
 MxACQtime: 33ms; DRate: 190.7KB/s; Flags: 0, 0, 0
 Pulse: 275ns, IFfilt: 5.0MHz; ppPol: HH HV VV
 TxPol: HHVV, PRF: 20 10 20 10 kHz
 Range: Delay 75m, Spacing 30m, Gates 100
 Ave. Pulses: 84, Rng/Prof Aspect@90m/s: 11.4

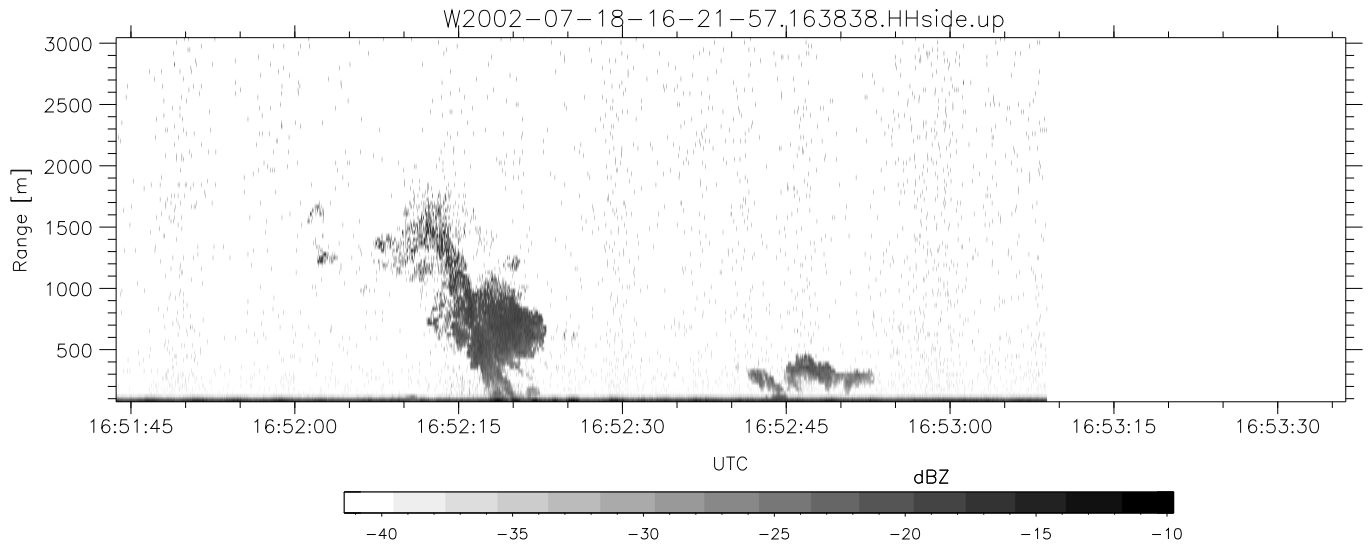
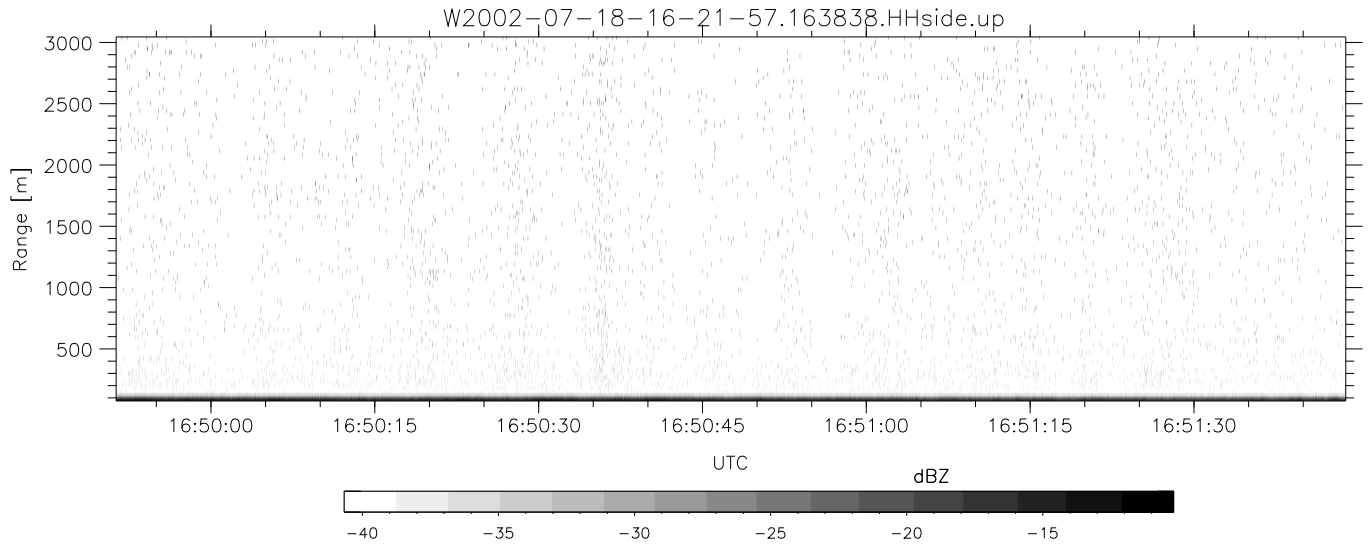
	Min	Max	Mean	Std	Varc%
hhN(dB)	-65.54	-61.89	-63.61	-73.63	10.0
vvN(dB)	-68.48	-65.02	-66.69	-76.70	10.0
hhL(dB)	-17.22	-0.06	-3.80	-7.00	47.9
vvL(dB)	-18.81	-8.52	-11.58	-15.92	36.9
ppN(m/s)	-12.75	12.81	-0.00	4.17	
ppT(m/s)	-100.6	101.20	-0.02	32.95	
hh/vv(dB)	-NaN	37.73	-NaN	38.46	-157
vh/hh(dB)	-99.00	-99.00	-99.00	-99.00	-99.
hv/vv(dB)	-NaN	-32.12	-45.95	-44.06	154.
hnjmp(dB)	-2.40	2.52	0.19	-8.35	14.0
vnjmp(dB)	-2.06	2.46	0.19	-8.37	13.9



HiCu 2002 (dual-antenna config, modes 1,3,4,5,6,7) Data (cal: 49.0,50.0)

W2002-07-18-16-21-57 - PPMAG4
 IRIG:1,UTC: 16:21:55.58 to 16:53:08.86, Dur: 1873s
 TimeLngth: 1873.28s, TimeInt: 29ms (34.1pps)
 TimeCor=-13.0s, DSPDif(mn,min,mx):29,28,197
 PPS(min,max,std): 29,36,2.10
 Prof: 3973 to 67788, NumProf(t/r): 63815/29677
 ProcTime/Recs: 16:38:38-16:53:08/34138-63814
 MxACQtime: 33ms; DRate: 190.7KB/s; Flags: 0, 0, 0
 Pulse: 275ns, IFfilt: 5.0MHz; ppPol: HH HV VV
 TxPol: HHVV, PRF: 20 10 20 10 kHz
 Range: Delay 75m, Spacing 30m, Gates 100
 Ave. Pulses: 84, Rng/Prof Aspect@90m/s: 11.4

	Min	Max	Mean	Std	Varc%
hhN(dB)	-65.54	-61.89	-63.61	-73.63	10.0
vvN(dB)	-68.48	-65.02	-66.69	-76.70	10.0
hhL(dB)	-17.22	-0.06	-3.80	-7.00	47.9
vvL(dB)	-18.81	-8.52	-11.58	-15.92	36.9
ppN(m/s)	-12.75	12.81	-0.00	4.17	
ppT(m/s)	-100.6	101.20	-0.02	32.95	
hh/vv(dB)	-NaN	37.73	-NaN	38.46	-157
vh/hh(dB)	-99.00	-99.00	-99.00	-99.00	-99.
hv/vv(dB)	-NaN	-32.12	-45.95	-44.06	154.
hnjmp(dB)	-2.40	2.52	0.19	-8.35	14.0
vnjmp(dB)	-2.06	2.46	0.19	-8.37	13.9



HiCu 2002 (dual-antenna config, modes 1,3,4,5,6,7) Data (cal: 49.0,50.0)

W2002-07-18-16-21-57 - PPMAG4						
IRIG:1,UTC: 16:21:55.58 to 16:53:08.86, Dur: 1873s	hhN (dB)	Min	Max	Mean	Std	Varc%
TimeLngth: 1873.28s, TimeInt: 29ms (34.1pps)	vvN (dB)	-65.54	-61.89	-63.61	-73.63	10.0
TimeCor=-13.0s, DSPDif(mn,min,mx):29,28,197	hhL (dB)	-68.48	-65.02	-66.69	-76.70	10.0
PPS(min,max,std): 29,36,2.10	vvL (dB)	-17.22	-0.06	-3.80	-7.00	47.9
Prof: 3973 to 67788, NumProf(t/r): 63815/29677	ppN (m/s)	-18.81	-8.52	-11.58	-15.92	36.9
ProcTime/Recs: 16:38:38-16:53:08/34138-63814	ppT (m/s)	-12.75	12.81	-0.00	4.17	
MxACQtime: 33ms; DRate: 190.7KB/s; Flags: 0, 0, 0	hh/vv (dB)	-100.6	101.20	-0.02	32.95	
Pulse: 275ns, IFfilt: 5.0MHz; ppPol: HH HV VV	vh/vh (dB)	-NaN	37.73	-NaN	38.46	-157
TxPol: HHVV, PRF: 20 10 20 10 kHz	hv/vv (dB)	-99.00	-99.00	-99.00	-99.00	-99.
Range: Delay 75m, Spacing 30m, Gates 100	hn/vv (dB)	-NaN	-32.12	-45.95	-44.06	154.
Ave. Pulses: 84, Rng/Prof Aspect@90m/s: 11.4	hn/jmp (dB)	-2.40	2.52	0.19	-8.35	14.0
	vn/jmp (dB)	-2.06	2.46	0.19	-8.37	13.9