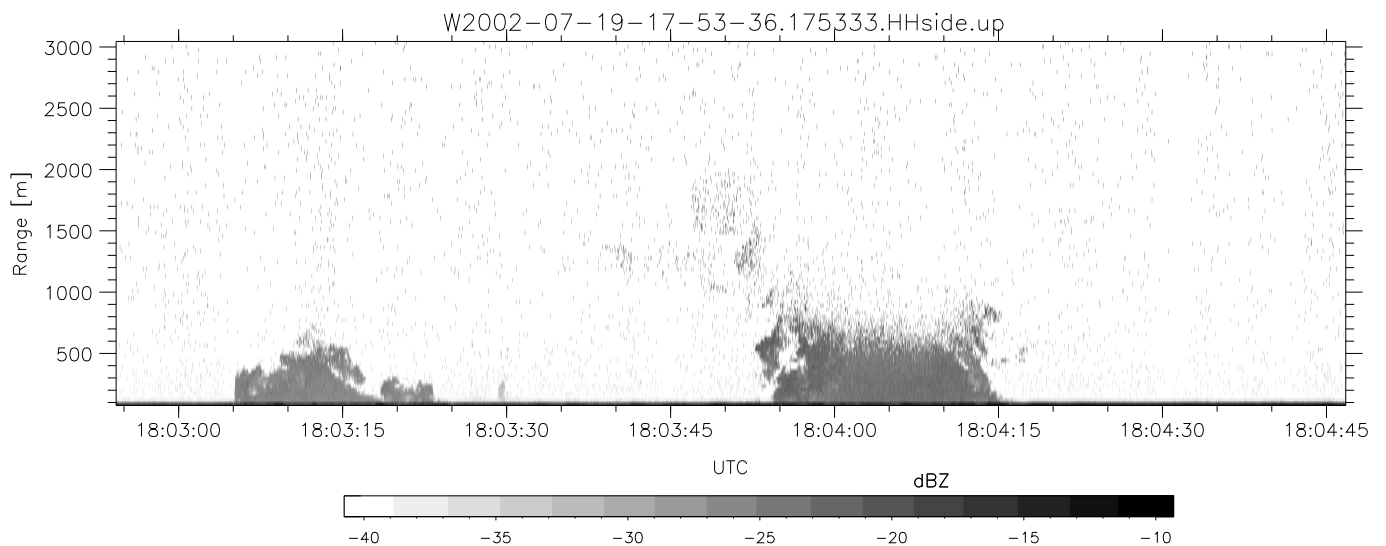
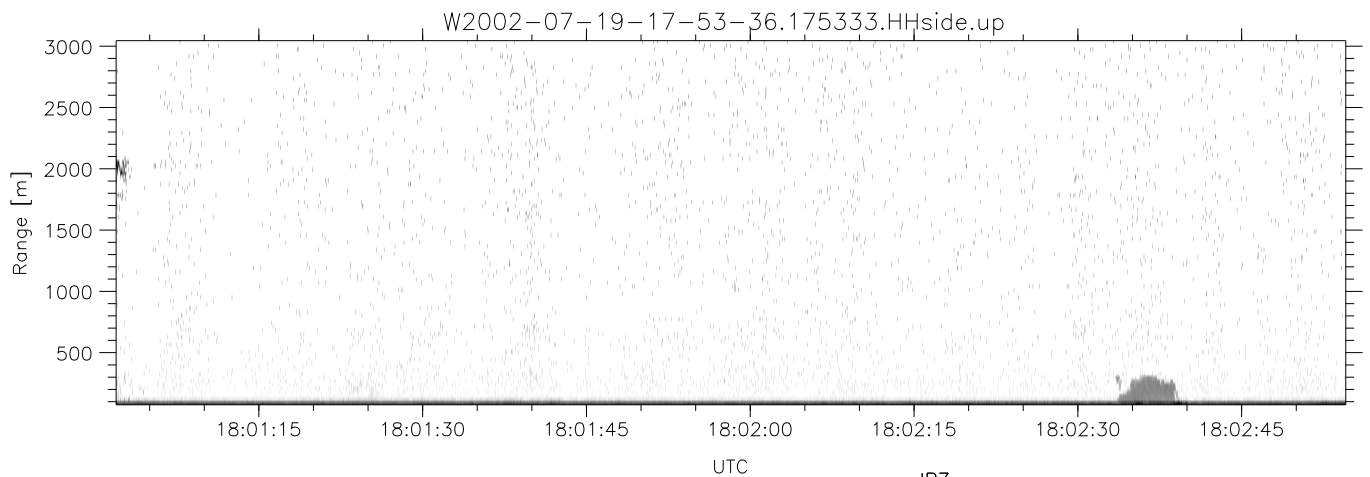
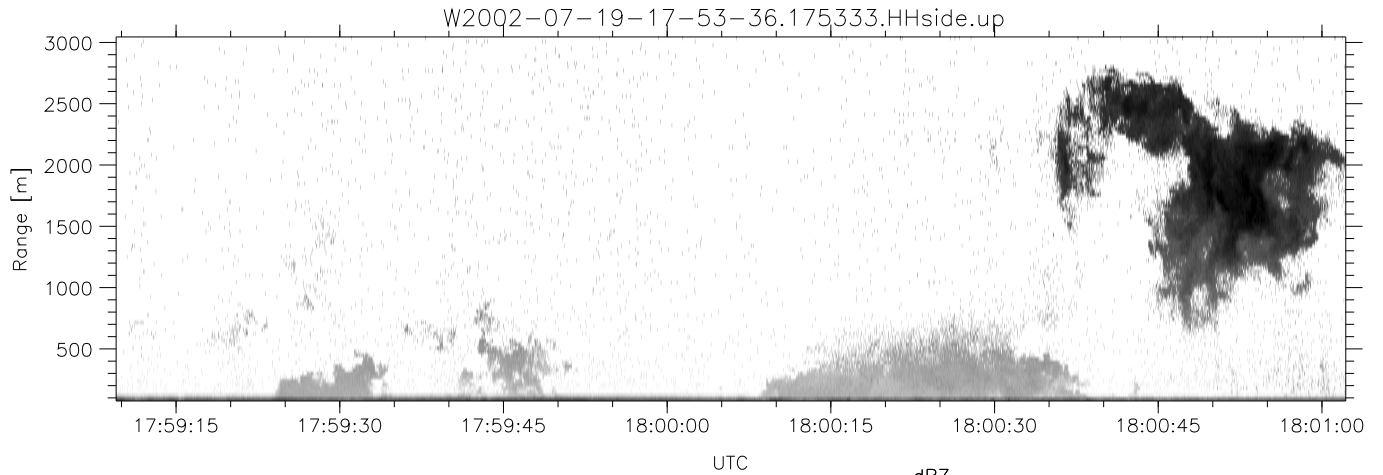


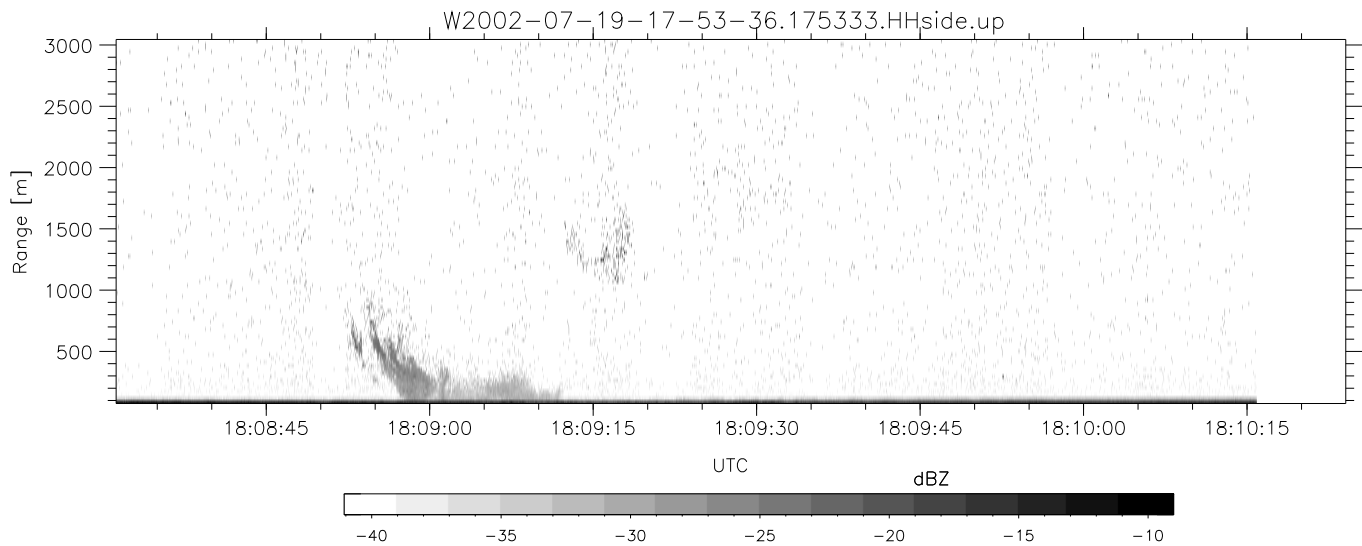
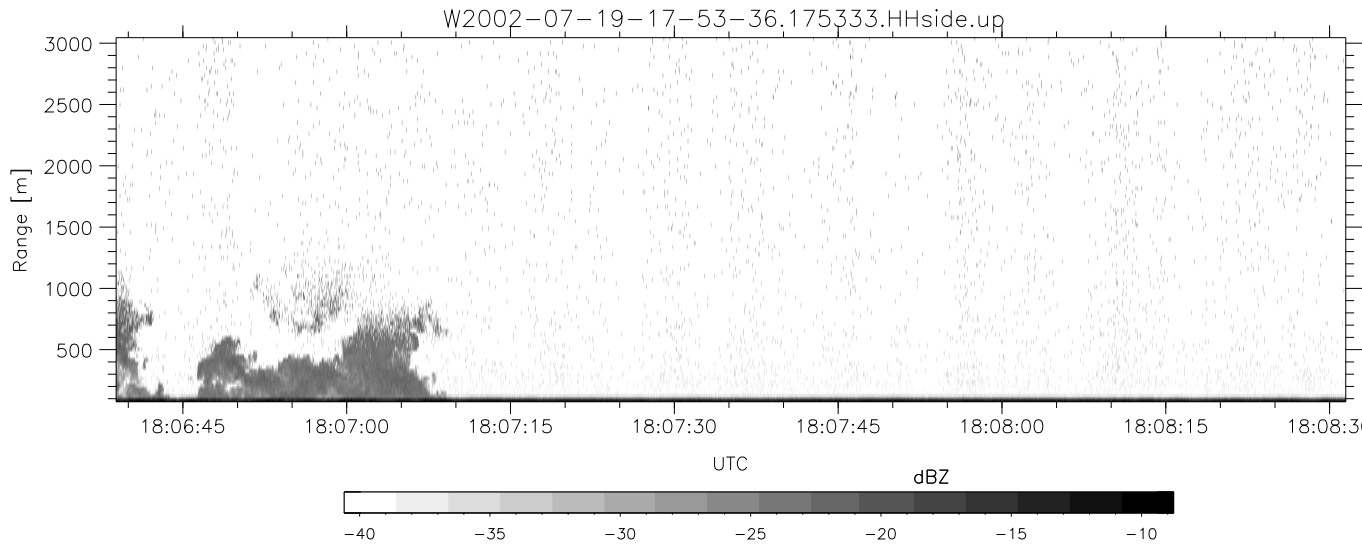
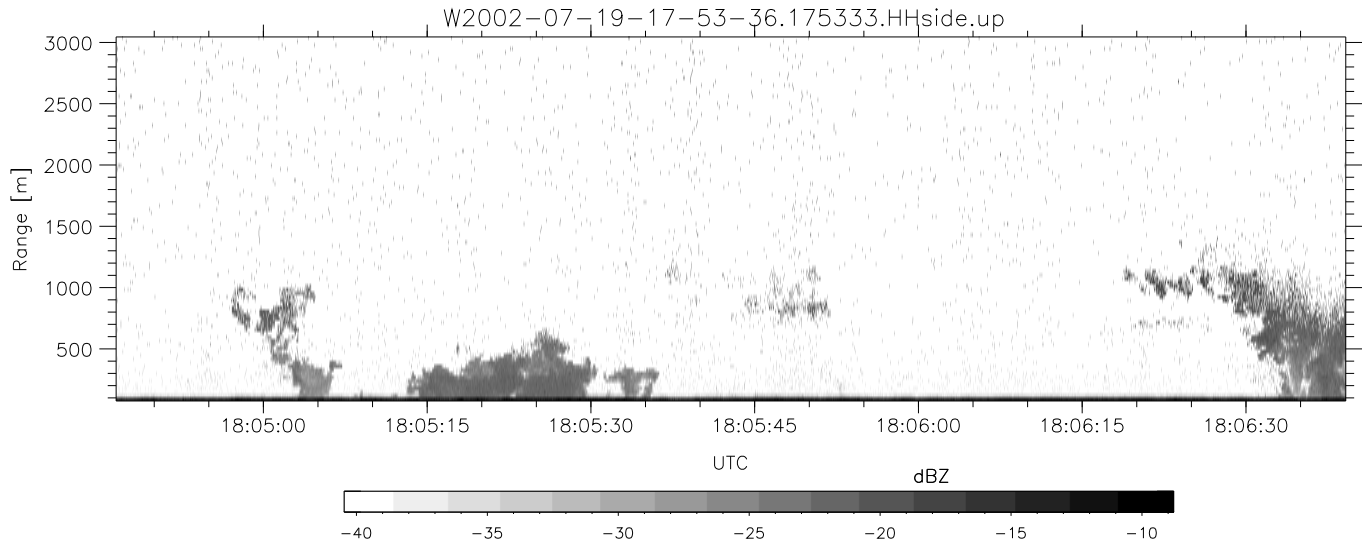
HiCu 2002 (dual-antenna config, modes 1,3,4,5,6,7) Data (cal: 49.0,50.0)

	Min	Max	Mean	Std	Varc%	
W2002-07-19-17-53-36 - PPMAG4						
IRIG:1,UTC: 17:53:33.08 to 18:10:46.14, Dur: 1033s	hhN(dB)	-64.78	-61.41	-62.97	-72.92	10.1
TimeLngth: 1033.07s, TimeInt: 29ms (34.0pps)	vvN(dB)	-67.93	-64.42	-66.05	-76.05	10.0
TimeCor=-13.0s, DSPDif(mn,min,mx):29,28,473	hhL(dB)	-15.03	0.68	-4.11	-6.71	54.9
PPS(min,max,std): 20,36,2.11	vvL(dB)	-17.27	-3.91	-8.74	-10.18	71.7
Prof: 766 to 35936, NumProf(t/r): 35170/34138	ppN(m/s)	-12.79	12.43	0.01	4.18	
ProcTime/Recs: 17:53:33-18:10:15/0-34137	ppT(m/s)	-101.0	98.21	0.10	33.01	
MxAcQtime: 33ms; DRate: 190.6KB/s; Flags: 0, 0, 0	hh/vv(dB)	-NaN	47.03	-NaN	36.40	-627
Pulse: 275ns, IFilt: 5.0MHz; ppPol: HH HV VV	vh/hh(dB)	-99.00	-99.00	-99.00	-99.00	-99.
TxPol: HHVV, PRF: 20 10 20 10 kHz	hv/vv(dB)	-NaN	-32.25	-45.98	-43.31	185.
Range: Delay 75m, Spacing 30m, Gates 100	hnjmp(dB)	-2.33	2.17	-0.11	-8.65	14.0
Ave. Pulses: 84, Rng/Prof Aspect@90m/s: 11.3	vnjmp(dB)	-2.44	2.15	-0.10	-8.64	14.0



HiCu 2002 (dual-antenna config, modes 1,3,4,5,6,7) Data (cal: 49.0,50.0)

W2002-07-19-17-53-36 - PPMAG4		Min	Max	Mean	Std	Varc%	
IRIG:1,UTC: 17:53:33.08 to 18:10:46.14, Dur: 1033s		hhN (dB)	-64.78	-61.41	-62.97	-72.92	10.1
TimeLngth: 1033.07s, TimeInt: 29ms (34.0pps)		vvN (dB)	-67.93	-64.42	-66.05	-76.05	10.0
TimeCor=-13.0s, DSPDif(mn,min,mx):29,28,473		hhL (dB)	-15.03	0.68	-4.11	-6.71	54.9
PPS(min,max,std): 20,36,2.11		vvL (dB)	-17.27	-3.91	-8.74	-10.18	71.7
Prof: 766 to 35936, NumProf(t/r): 35170/34138		ppN (m/s)	-12.79	12.43	0.01	4.18	
ProcTime/Recs: 17:53:33-18:10:15/0-34137		ppT (m/s)	-101.0	98.21	0.10	33.01	
MxACQtime: 33ms; DRate: 190.6KB/s; Flags: 0, 0, 0		hh/vv (dB)	-NaN	47.03	-NaN	36.40	-627
Pulse: 275ns, IFilt: 5.0MHz; ppPol: HH HV VV		vh/hh (dB)	-99.00	-99.00	-99.00	-99.00	-99.
TxPol: HHVV, PRF: 20 10 20 10 kHz		hv/vv (dB)	-NaN	-32.25	-45.98	-43.31	185.
Range: Delay 75m, Spacing 30m, Gates 100		hn_jmp (dB)	-2.33	2.17	-0.11	-8.65	14.0
Ave. Pulses: 84, Rng/Prof Aspect@90m/s: 11.3		vn_jmp (dB)	-2.44	2.15	-0.10	-8.64	14.0



HiCu 2002 (dual-antenna config, modes 1,3,4,5,6,7) Data (cal: 49.0,50.0)

W2002-07-19-17-53-36 - PPMAG4	Min	Max	Mean	Std	Varc%	
IRIG:1,UTC: 17:53:33.08 to 18:10:46.14, Dur: 1033s	hhN(dB)	-64.78	-61.41	-62.97	-72.92	10.1
TimeLngth: 1033.07s, TimeInt: 29ms (34.Opps)	vvN(dB)	-67.93	-64.42	-66.05	-76.05	10.0
TimeCor=-13.0s, DSPDif(mn,min,mx):29,28,473	hhL(dB)	-15.03	0.68	-4.11	-6.71	54.9
PPS(min,max,std): 20,36,2.11	vvL(dB)	-17.27	-3.91	-8.74	-10.18	71.7
Prof: 766 to 35936, NumProf(t/r): 35170/34138	ppN(m/s)	-12.79	12.43	0.01	4.18	
ProcTime/Recs: 17:53:33-18:10:15/0-34137	ppT(m/s)	-101.0	98.21	0.10	33.01	
MxACQtime: 33ms; DRate: 190.6KB/s; Flags: 0, 0, 0	hh/vv(dB)	-NaN	47.03	-NaN	36.40	-627
Pulse: 275ns, IFilt: 5.0MHz; ppPol: HH HV VV	vh/hh(dB)	-99.00	-99.00	-99.00	-99.00	-99.
TxPol: HHVV, PRF: 20 10 20 10 kHz	hv/vv(dB)	-NaN	-32.25	-45.98	-43.31	185.
Range: Delay 75m, Spacing 30m, Gates 100	hnjmp(dB)	-2.33	2.17	-0.11	-8.65	14.0
Ave. Pulses: 84, Rng/Prof Aspect@90m/s: 11.3	vnjmp(dB)	-2.44	2.15	-0.10	-8.64	14.0