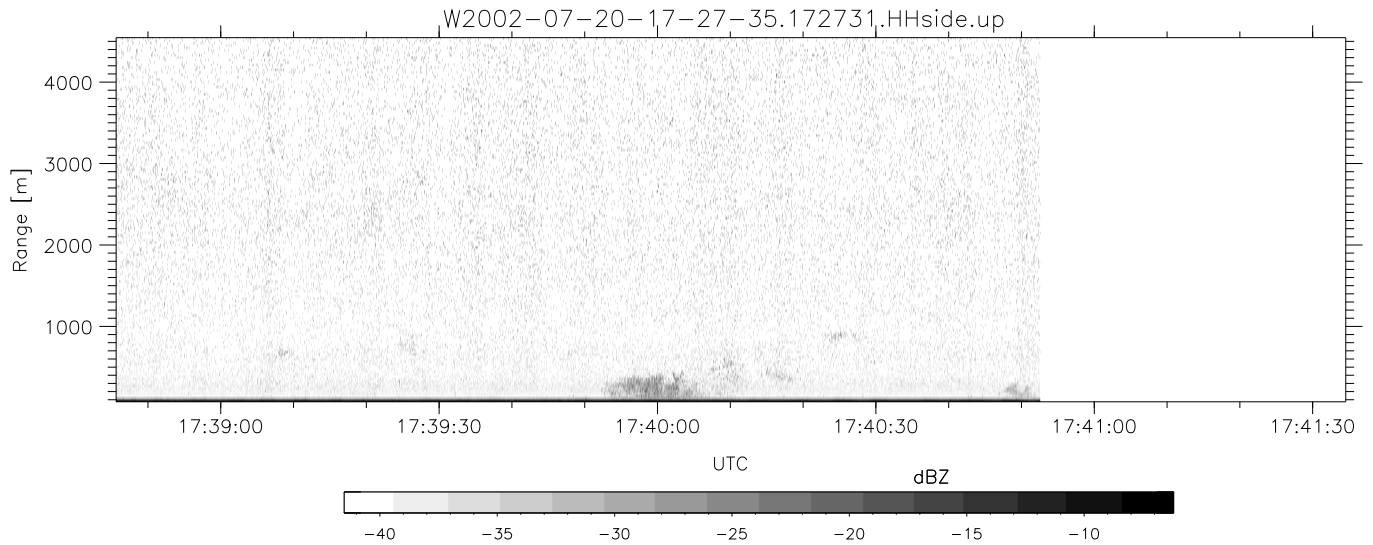
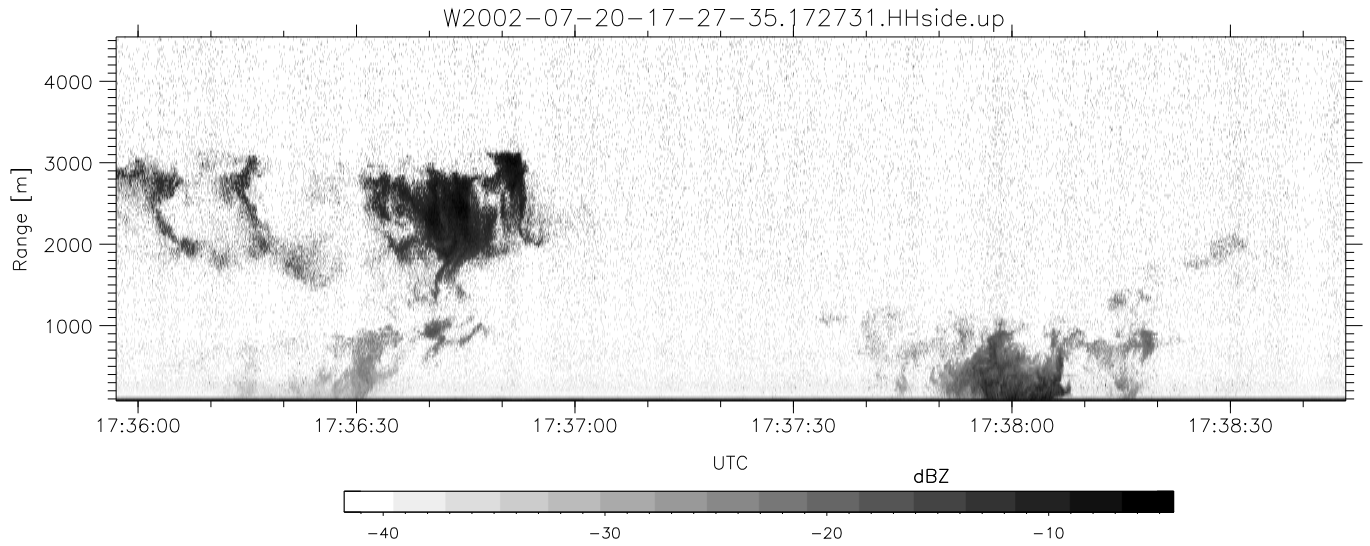


HiCu 2002 (dual-antenna config, modes 1,3,4,5,6,7) Data (cal: 49.0,50.0)

W2002-07-20-17-27-35 - SPPMAG
 IRIG:1,UTC: 17:27:31.25 to 17:40:52.55, Dur: 801s
 TimeLngth: 801.30s, TimeInt: 25ms (39.8pps)
 TimeCor=-13.0s, DSPDif(mn,min,mx):22,20,231
 PPS(min,max,std): 23,42,3.24
 Prof: 218 to 32116, NumProf(t/r): 31898/31898
 MxACQtime: 17ms; DRate: 95.3KB/s; Flags: 0, 0, 0
 Pulse: 275ns, IFfilt: 5.0MHz; ppPol: HH
 TxPol: H, PRF: 20 kHz
 Range: Delay 75m, Spacing 30m, Gates 150
 Ave. Pulses: 348, Rng/Prof Aspect@90m/s: 13.3

	Min	Max	Mean	Std	Varc%
hhN(dB)	-63.64	-61.93	-62.77	-75.64	5.2
vvN(dB)	-66.76	-64.97	-65.82	-78.75	5.1
hhL(dB)	-6.51	0.93	-0.14	-9.78	10.9
vhL(dB)	-8.73	-0.97	-2.95	-10.87	16.2
ppN(m/s)	-15.80	15.80	0.04	9.10	
ppT(m/s)	-0.04	0.03	-0.00	0.01	
vh/hh(dB)	-99.00	-99.00	-99.00	-99.00	-99.
hnjmp(dB)	-1.27	1.04	-0.15	-11.86	6.7
vnjmp(dB)	-1.31	0.91	-0.14	-11.78	6.9



HiCu 2002 (dual-antenna config, modes 1,3,4,5,6,7) Data (cal: 49.0,50.0)

W2002-07-20-17-27-35 - SPPMAG
 IRIG:1,UTC: 17:27:31.25 to 17:40:52.55, Dur: 801s
 TimeLngth: 801.30s, TimeInt: 25ms (39.8pps)
 TimeCor=-13.0s, DSPDif(mn,min,mx):22,20,231
 PPS(min,max,std): 23,42,3.24
 Prof: 218 to 32116, NumProf(t/r): 31898/31898
 MxACQtime: 17ms; DRate: 95.3KB/s; Flags: 0, 0, 0
 Pulse: 275ns, IFfilt: 5.0MHz; ppPol: HH
 TxPol: H, PRF: 20 kHz
 Range: Delay 75m, Spacing 30m, Gates 150
 Ave. Pulses: 348, Rng/Prof Aspect@90m/s: 13.3

	Min	Max	Mean	Std	Varc%
hhN(dB)	-63.64	-61.93	-62.77	-75.64	5.2
vvN(dB)	-66.76	-64.97	-65.82	-78.75	5.1
hhL(dB)	-6.51	0.93	-0.14	-9.78	10.9
vhL(dB)	-8.73	-0.97	-2.95	-10.87	16.2
ppN(m/s)	-15.80	15.80	0.04	9.10	
ppT(m/s)	-0.04	0.03	-0.00	0.01	
vh/hh(dB)	-99.00	-99.00	-99.00	-99.00	-99.
hnjmp(dB)	-1.27	1.04	-0.15	-11.86	6.7
vnjmp(dB)	-1.31	0.91	-0.14	-11.78	6.9