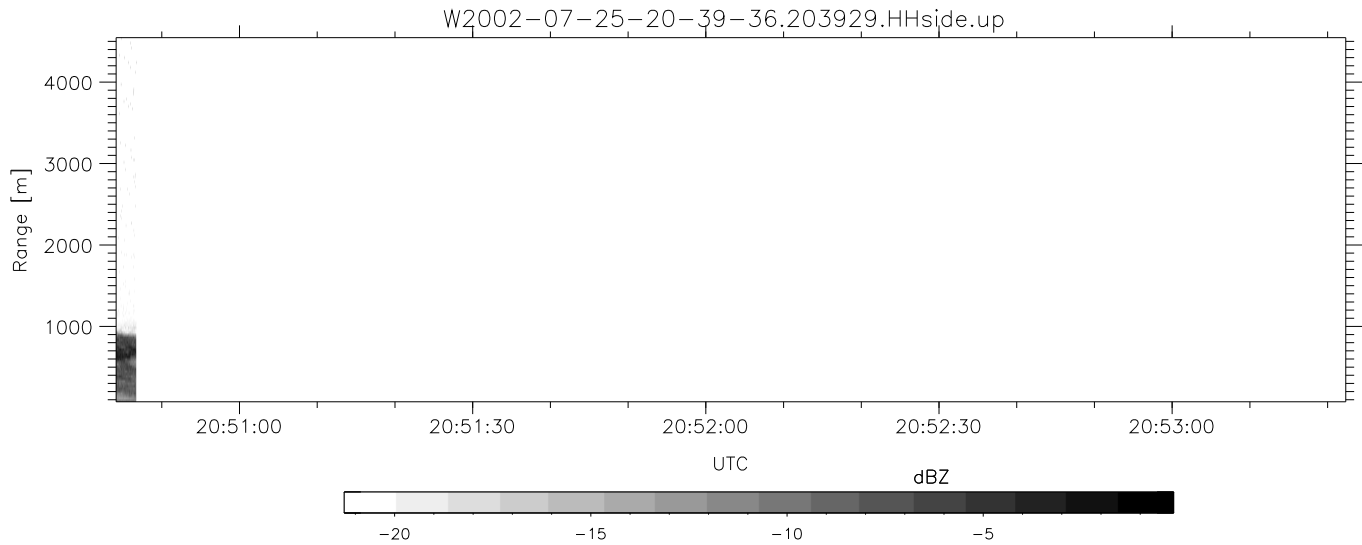
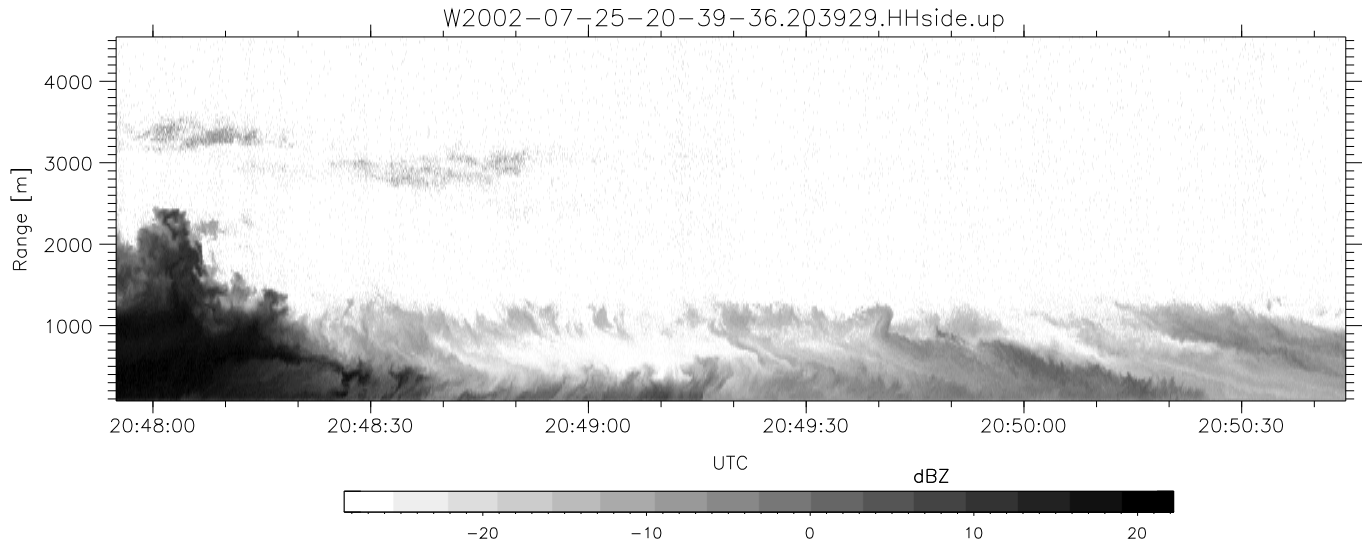


HiCu 2002 (dual-antenna config, modes 1,3,4,5,6,7) Data (cal: 49.0,50.0)

W2002-07-25-20-39-36 - PPMAG4	Min	Max	Mean	Std	Varc%	
IRIG:1,UTC: 20:39:29.49 to 20:50:46.70, Dur: 677s	hhN (dB)	-65.62	-61.21	-63.35	-72.46	12.3
TimeLngth: 677.21s, TimeInt: 25ms (39.6pps)	vvN (dB)	-69.00	-64.36	-66.37	-75.48	12.3
TimeCor=-13.0s, DSPDif(mn,min,mx):24,-980,3026	hhL (dB)	-3.71	0.87	-0.76	-8.72	16.0
PPS(min,max,std): 0,160,13.60	vvL (dB)	-20.34	-5.88	-10.66	-12.13	71.4
Prof: 298 to 27115, NumProf(t/r): 26817/26817	ppN(m/s)	-12.44	12.50	0.01	4.18	
MxACQtime: 22ms; DRate: 329.9KB/s; Flags: 0, 0, 0	ppT(m/s)	-98.25	98.75	0.06	33.00	
Pulse: 275ns, IFfilt: 5.0MHz; ppPol: HH HV VV	hh/vv (dB)	-NaN	45.03	-1.09	20.38	1402
TxPol: HHVV, PRF: 20 10 20 10 kHz	vh/hh (dB)	-NaN	-27.37	-46.89	-38.93	625.
Range: Delay 75m, Spacing 30m, Gates 150	hv/vv (dB)	-NaN	-29.55	-42.92	-39.37	226.
Ave. Pulses: 56, Rng/Prof Aspect@90m/s: 13.2	hn_jmp (dB)	-3.24	2.78	-0.09	-7.71	17.3
	vn_jmp (dB)	-2.84	2.56	-0.06	-7.76	17.0



HiCu 2002 (dual-antenna config, modes 1,3,4,5,6,7) Data (cal: 49.0,50.0)

W2002-07-25-20-39-36 - PPMAG4					
IRIG:1,UTC: 20:39:29.49 to 20:50:46.70, Dur: 677s	hhN (dB)	Min	Max	Mean	Std
TimeLngth: 677.21s, TimeInt: 25ms (39.6pps)	vvN (dB)	-65.62	-61.21	-63.35	-72.46
TimeCor=-13.0s, DSPDif(mn,min,mx):24,-980,3026	hhL (dB)	-69.00	-64.36	-66.37	-75.48
PPS(min,max,std): 0,160,13.60	vvL (dB)	-3.71	0.87	-0.76	-8.72
Prof: 298 to 27115, NumProf(t/r): 26817/26817	ppN (m/s)	-20.34	-5.88	-10.66	-12.13
MxACQtime: 22ms; DRate: 329.9KB/s; Flags: 0, 0, 0	ppT (m/s)	-12.44	12.50	0.01	4.18
Pulse: 275ns, IFfilt: 5.0MHz; ppPol: HH HV VV	hh/vv (dB)	-98.25	98.75	0.06	33.00
TxPol: HHVV, PRF: 20 10 20 10 kHz	vh/hh (dB)	-NaN	45.03	-1.09	20.38
Range: Delay 75m, Spacing 30m, Gates 150	hv/vv (dB)	-NaN	-27.37	-46.89	-38.93
Ave. Pulses: 56, Rng/Prof Aspect@90m/s: 13.2	hn/jmp (dB)	-NaN	-29.55	-42.92	-39.37
	vn/jmp (dB)	-3.24	2.78	-0.09	-7.71
		-2.84	2.56	-0.06	-7.76
					12.3
					12.3
					16.0
					71.4
					1402
					625.
					226.
					17.3
					17.0