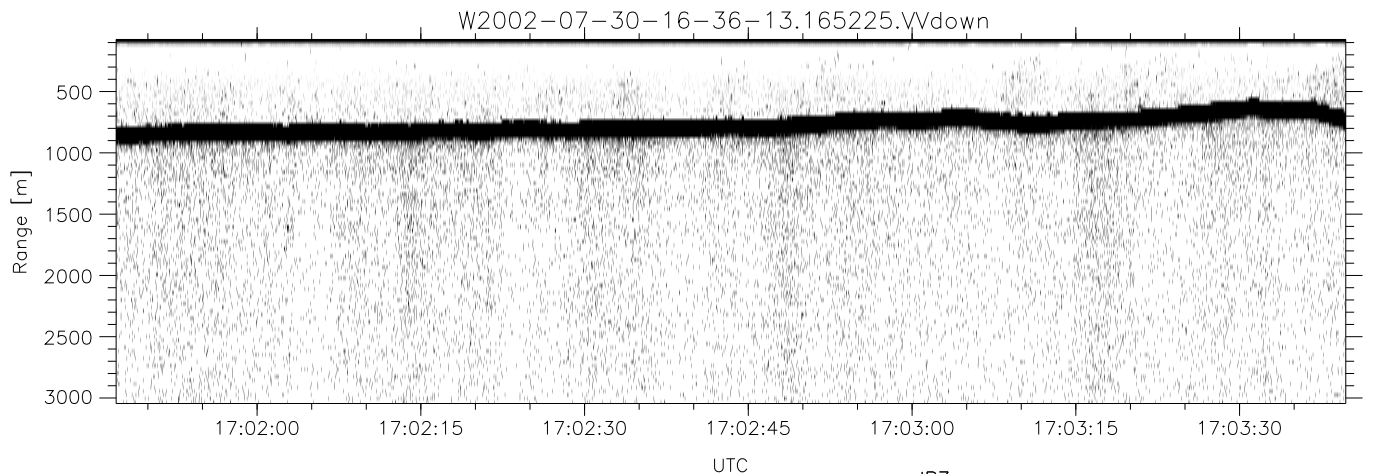
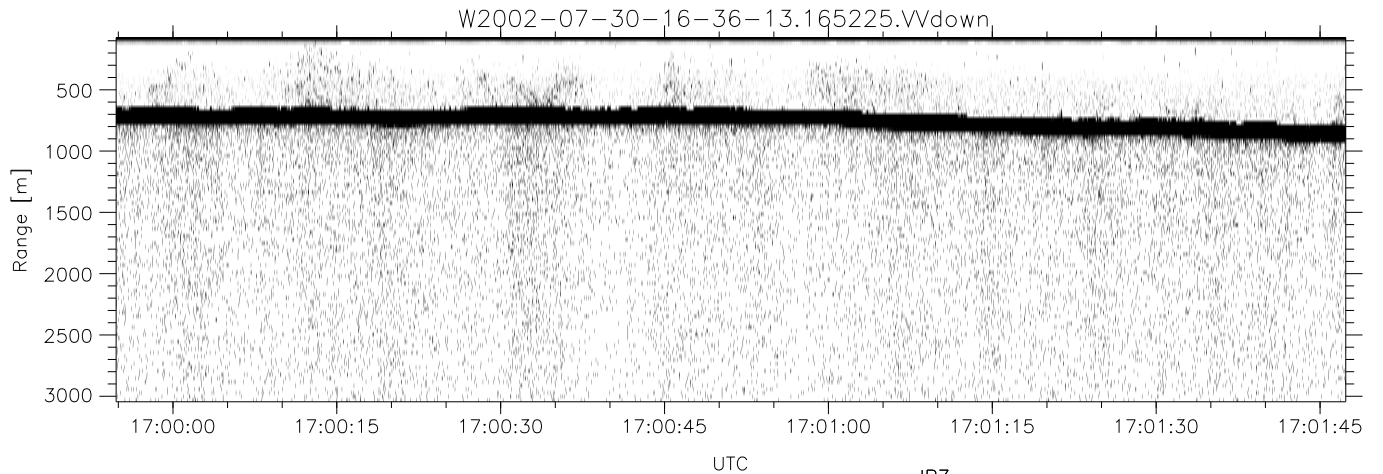
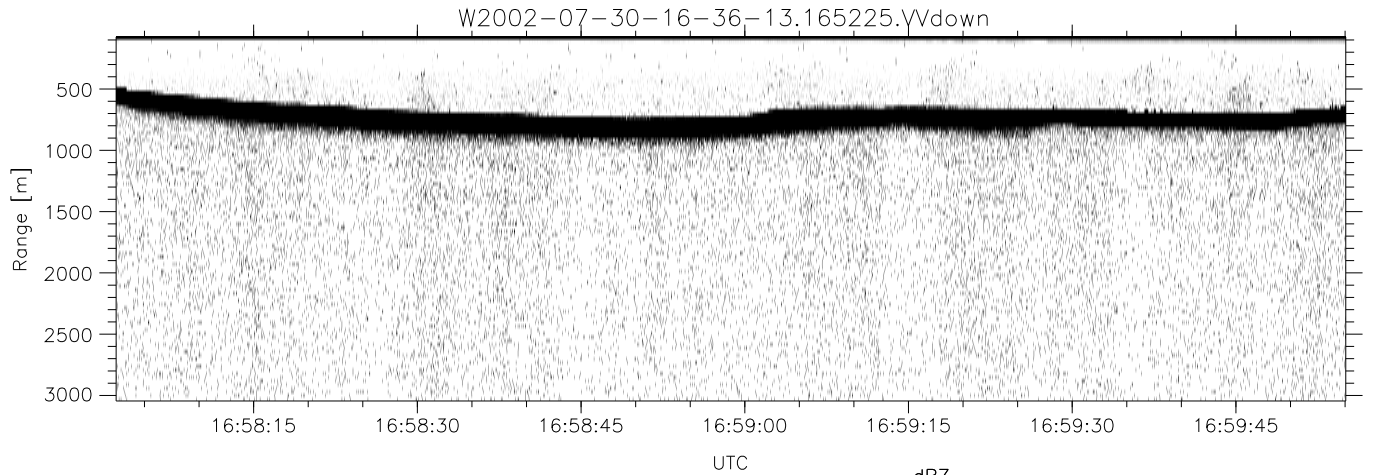


HiCu 2002 (dual-antenna config, modes 1,3,4,5,6,7) Data (cal: 55.0,50.0)

W2002-07-30-16-36-13 - SPPMAG  
 IRIG:1,UTC: 16:36:00.34 to 17:20:54.85, Dur: 2694s  
 TimeLngth: 2694.51s, TimeInt: 29ms (33.6pps)  
 TimeCor=-13.0s, DSPDif(mn,min,mx):29,28,141  
 PPS(min,max,std): 30,35,1.47  
 Prof: 344 to 90949, NumProf(t/r): 90605/33134  
 ProcTime/Recs: 16:52:25-17:08:51/33134-66267  
 MxACQtime: 26ms; DRate: 54.2KB/s; Flags: 0, 0, 0  
 Pulse: 275ns, IFfilt: 5.0MHz; ppPol: VV  
 TxPol: V, PRF: 20 kHz  
 Range: Delay 75m, Spacing 30m, Gates 100  
 Ave. Pulses: 520, Rng/Prof Aspect@90m/s: 11.2

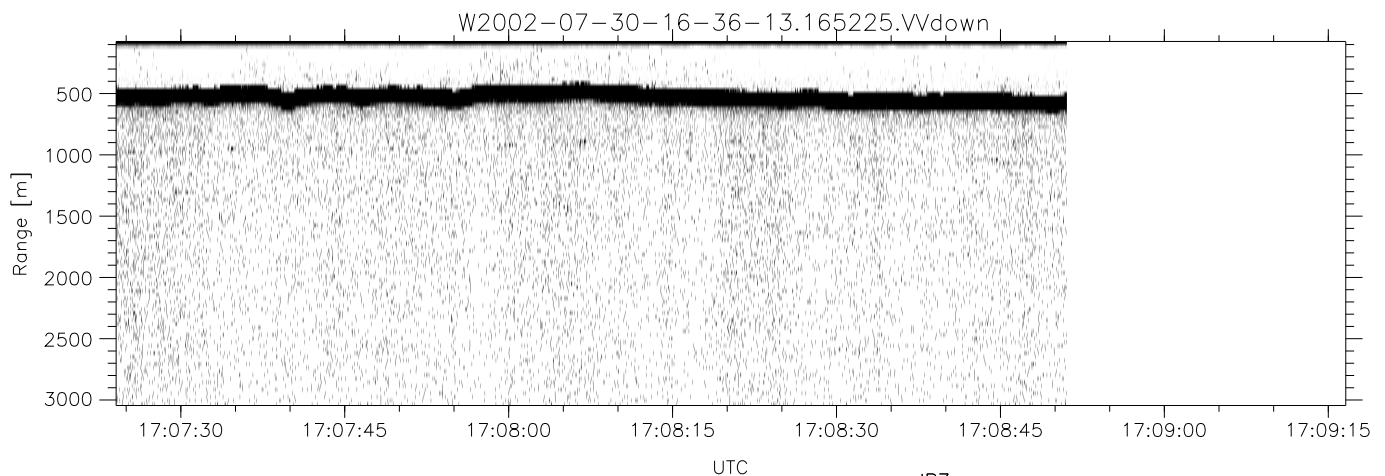
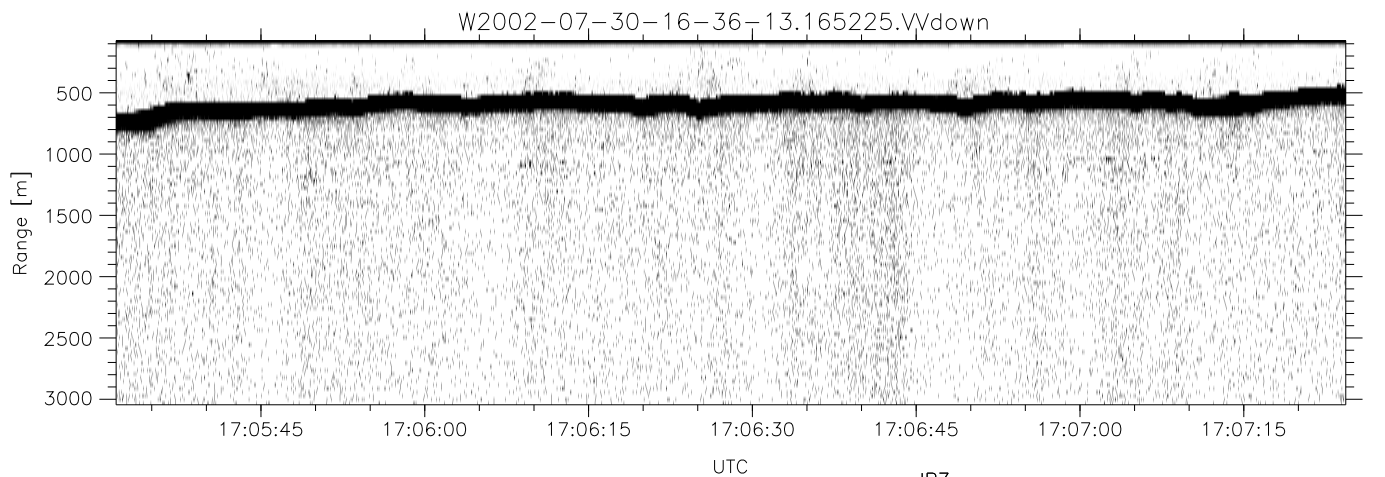
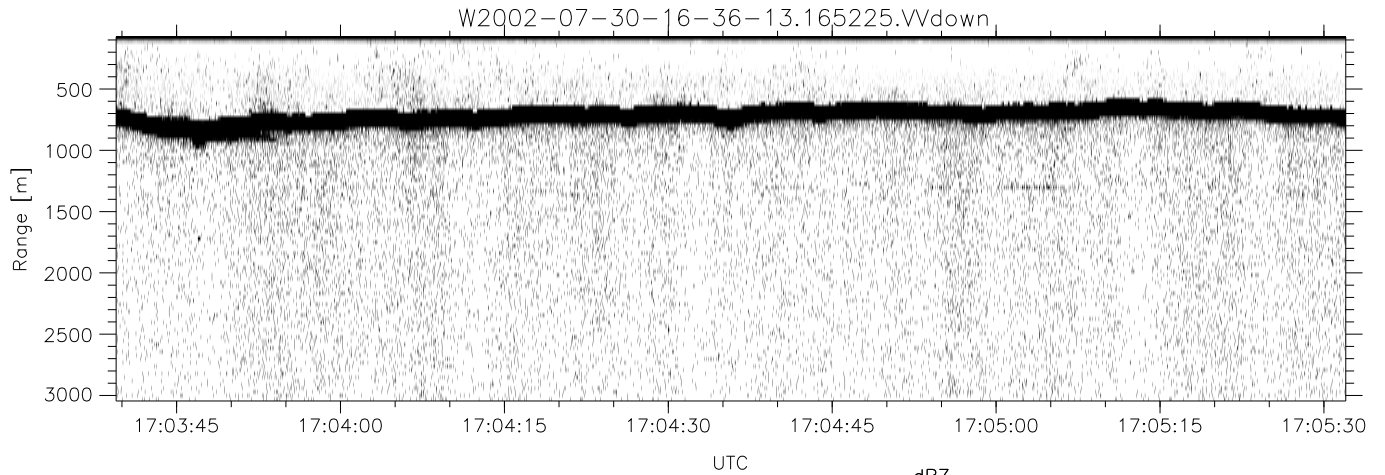
	Min	Max	Mean	Std	Varc%
hhN(dB)	-70.95	-69.43	-70.13	-83.91	4.2
vvN(dB)	-67.11	-65.54	-66.30	-79.82	4.4
vvL(dB)	-10.60	-4.65	-6.65	-13.23	22.0
hvL(dB)	-70.82	-69.31	-70.10	-83.89	4.2
ppN(m/s)	-15.80	15.80	0.05	9.12	
ppT(m/s)	-0.02	0.01	-0.00	0.00	
hv/vv(dB)	-NaN	-41.77	-70.64	-52.90	5943
hnjmp(dB)	-1.10	0.80	-0.12	-12.73	5.5
vnjmp(dB)	-1.13	0.95	-0.15	-12.67	5.6



HiCu 2002 (dual-antenna config, modes 1,3,4,5,6,7) Data (cal: 55.0,50.0)

W2002-07-30-16-36-13 - SPPMAG  
 IRIG:1,UTC: 16:36:00.34 to 17:20:54.85, Dur: 2694s  
 TimeLngth: 2694.51s, TimeInt: 29ms (33.6pps)  
 TimeCor=-13.0s, DSPDif(mn,min,mx):29,28,141  
 PPS(min,max,std): 30,35,1.47  
 Prof: 344 to 90949, NumProf(t/r): 90605/33134  
 ProcTime/Recs: 16:52:25-17:08:51/33134-66267  
 MxACQtime: 26ms; DRate: 54.2KB/s; Flags: 0, 0, 0  
 Pulse: 275ns, IFfilt: 5.0MHz; ppPol: VV  
 TxPol: V, PRF: 20 kHz  
 Range: Delay 75m, Spacing 30m, Gates 100  
 Ave. Pulses: 520, Rng/Prof Aspect@90m/s: 11.2

	Min	Max	Mean	Std	Varc%
hhN(dB)	-70.95	-69.43	-70.13	-83.91	4.2
vvN(dB)	-67.11	-65.54	-66.30	-79.82	4.4
vvL(dB)	-10.60	-4.65	-6.65	-13.23	22.0
hvL(dB)	-70.82	-69.31	-70.10	-83.89	4.2
ppN(m/s)	-15.80	15.80	0.05	9.12	
ppT(m/s)	-0.02	0.01	-0.00	0.00	
hv/vv(dB)	-NaN	-41.77	-70.64	-52.90	5943
hnjmp(dB)	-1.10	0.80	-0.12	-12.73	5.5
vnjmp(dB)	-1.13	0.95	-0.15	-12.67	5.6



HiCu 2002 (dual-antenna config, modes 1,3,4,5,6,7) Data (cal: 55.0,50.0)

W2002-07-30-16-36-13 - SPPMAG  
 IRIG:1,UTC: 16:36:00.34 to 17:20:54.85, Dur: 2694s  
 TimeLngth: 2694.51s, TimeInt: 29ms (33.6pps)  
 TimeCor=-13.0s, DSPDif(mn,min,mx):29,28,141  
 PPS(min,max,std): 30,35,1.47  
 Prof: 344 to 90949, NumProf(t/r): 90605/33134  
 ProcTime/Recs: 16:52:25-17:08:51/33134-66267  
 MxACQtime: 26ms; DRate: 54.2KB/s; Flags: 0, 0, 0  
 Pulse: 275ns, IFfilt: 5.0MHz; ppPol: VV  
 TxPol: V, PRF: 20 kHz  
 Range: Delay 75m, Spacing 30m, Gates 100  
 Ave. Pulses: 520, Rng/Prof Aspect@90m/s: 11.2

	Min	Max	Mean	Std	Varc%
hhN(dB)	-70.95	-69.43	-70.13	-83.91	4.2
vvN(dB)	-67.11	-65.54	-66.30	-79.82	4.4
vvL(dB)	-10.60	-4.65	-6.65	-13.23	22.0
hvL(dB)	-70.82	-69.31	-70.10	-83.89	4.2
ppN(m/s)	-15.80	15.80	0.05	9.12	
ppT(m/s)	-0.02	0.01	-0.00	0.00	
hv/vv(dB)	-NaN	-41.77	-70.64	-52.90	5943
hnjmp(dB)	-1.10	0.80	-0.12	-12.73	5.5
vnjmp(dB)	-1.13	0.95	-0.15	-12.67	5.6