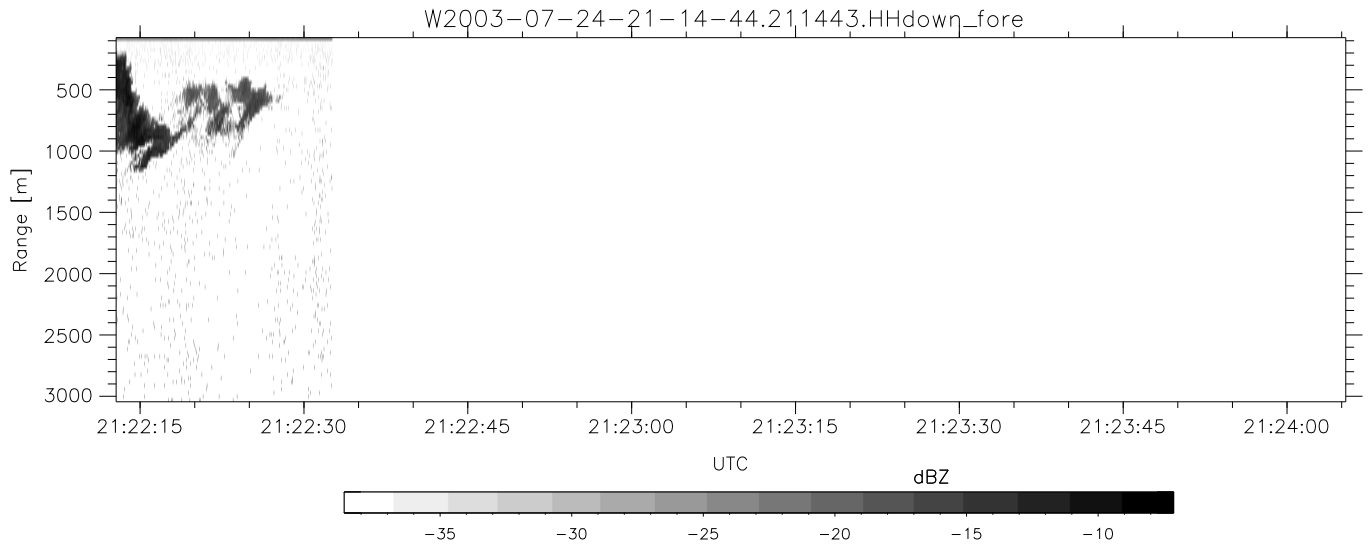
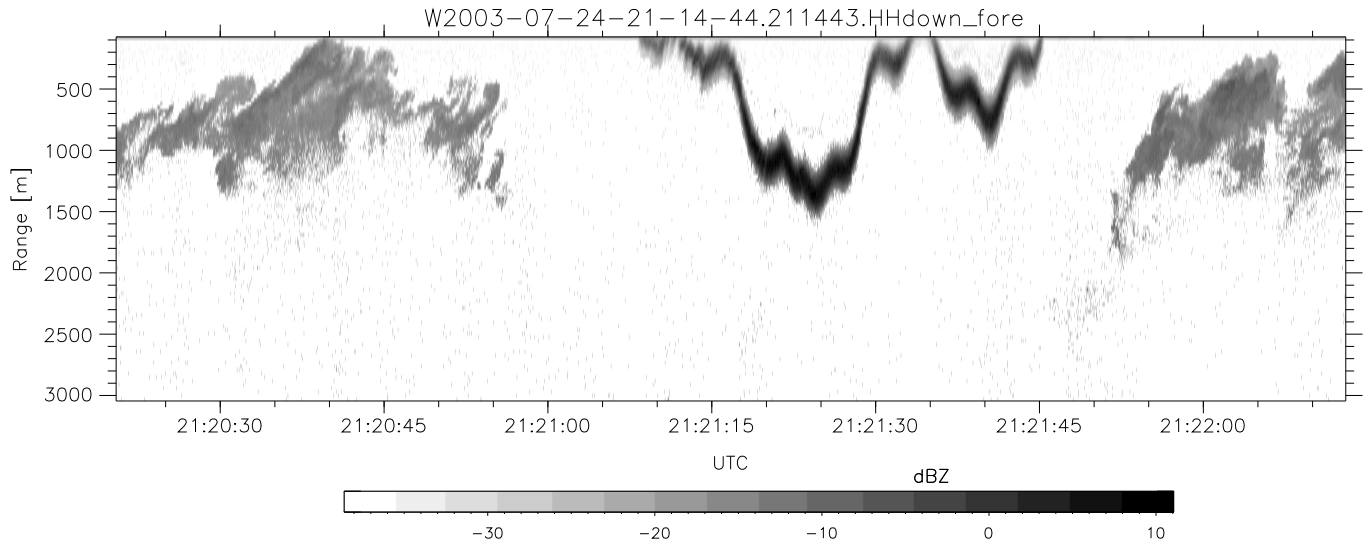


HiCu 2003 (dual-antenna configs, 4 antennas) Data (cal/250ns+2.5/100ns-3.5/500ns: 53.0,48.0)

W2003-07-24-21-14-44 - PPMAG4, IRIG:1/0/2
 UTC: 21:14:43.50 to 21:22:32.59, Dur: 469s
 TimeLngth: 469.75s, TimeInt: 26ms (38.2pps)
 TimeCor=-13.0s, PPS(min,max,med): 38,39,38
 Timeint/DSPdiff(mn,min,mx):26,25,32/26,25,27
 Prof: 389 to 18313, NumProf(r/t): 17924/17924
 ADacqtime: 22ms; DRate: 213.9KB/s; Flags: 0, 0, 0
 Pulse: 275ns, IFfilt: 5.0MHz; ppPol: HH HV VV
 TxPol: HHVV, PRF: 15 15 15 15 kHz
 Range: Delay 75m, Spacing 30m, Gates 100
 Ave. Pulses: 84, Rng/Prof Aspect@90m/s: 12.7

	Min	Max	Mean	Std	Varc%
hhN (dB)	-66.08	-62.59	-64.16	-74.23	9.8
vvN (dB)	-66.85	-63.61	-65.09	-75.14	9.9
hhL (dB)	-2.28	1.89	-0.99	-9.51	14.1
vvL (dB)	-0.41	5.34	3.35	-4.54	16.3
ppN (m/s)	-11.45	11.35	0.04	3.90	
ppT (m/s)	-0.06	8.96	2.53	3.59	
hh/vv (dB)	NaN	61.52	26.35	43.06	4687
vh/hh (dB)	NaN	-29.76	-37.01	-35.15	153.
hv/vv (dB)	-99.00	-99.00	-99.00	-99.00	-99.
hn_jmp (dB)			0.07		
vn_jmp (dB)			0.06		



HiCu 2003 (dual-antenna configs, 4 antennas) Data (cal/250ns+2.5/100ns-3.5/500ns: 53.0,48.0)

W2003-07-24-21-14-44 - PPMAG4, IRIG:1/0/2
 UTC: 21:14:43.50 to 21:22:32.59, Dur: 469s
 TimeLngth: 469.75s, TimeInt: 26ms (38.2pps)
 TimeCor=-13.0s, PPS(min,max,med): 38,39,38
 Timeint/DSPdiff(mn,min,mx):26,25,32/26,25,27
 Prof: 389 to 18313, NumProf(r/t): 17924/17924
 ADacqtime: 22ms; DRate: 213.9kB/s; Flags: 0, 0, 0
 Pulse: 275ns, IFfilt: 5.0MHz; ppPol: HH HV VV
 TxPol: HHVV, PRF: 15 15 15 15 kHz
 Range: Delay 75m, Spacing 30m, Gates 100
 Ave. Pulses: 84, Rng/Prof Aspect@90m/s: 12.7

	Min	Max	Mean	Std	Varc%
hhN(dB)	-66.08	-62.59	-64.16	-74.23	9.8
vvN(dB)	-66.85	-63.61	-65.09	-75.14	9.9
hhL(dB)	-2.28	1.89	-0.99	-9.51	14.1
vvL(dB)	-0.41	5.34	3.35	-4.54	16.3
ppN(m/s)	-11.45	11.35	0.04	3.90	
ppT(m/s)	-0.06	8.96	2.53	3.59	
hh/vv(dB)	NaN	61.52	26.35	43.06	4687
vh/hh(dB)	NaN	-29.76	-37.01	-35.15	153.
hv/vv(dB)	-99.00	-99.00	-99.00	-99.00	-99.
hnjmp(dB)			0.07		
vnjmp(dB)			0.06		