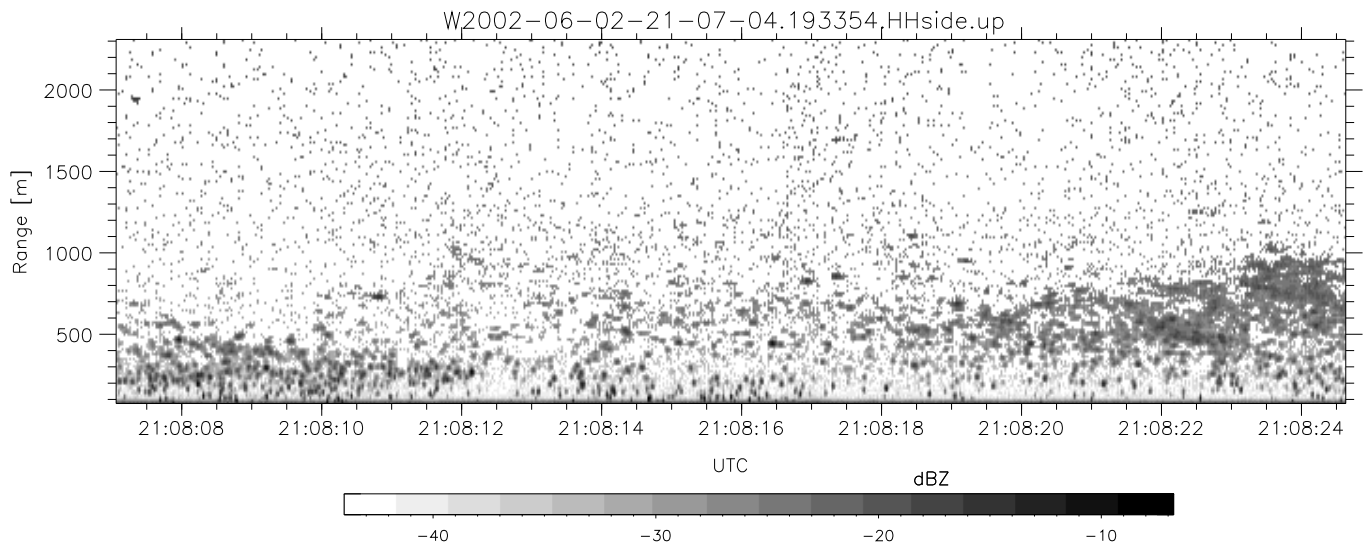
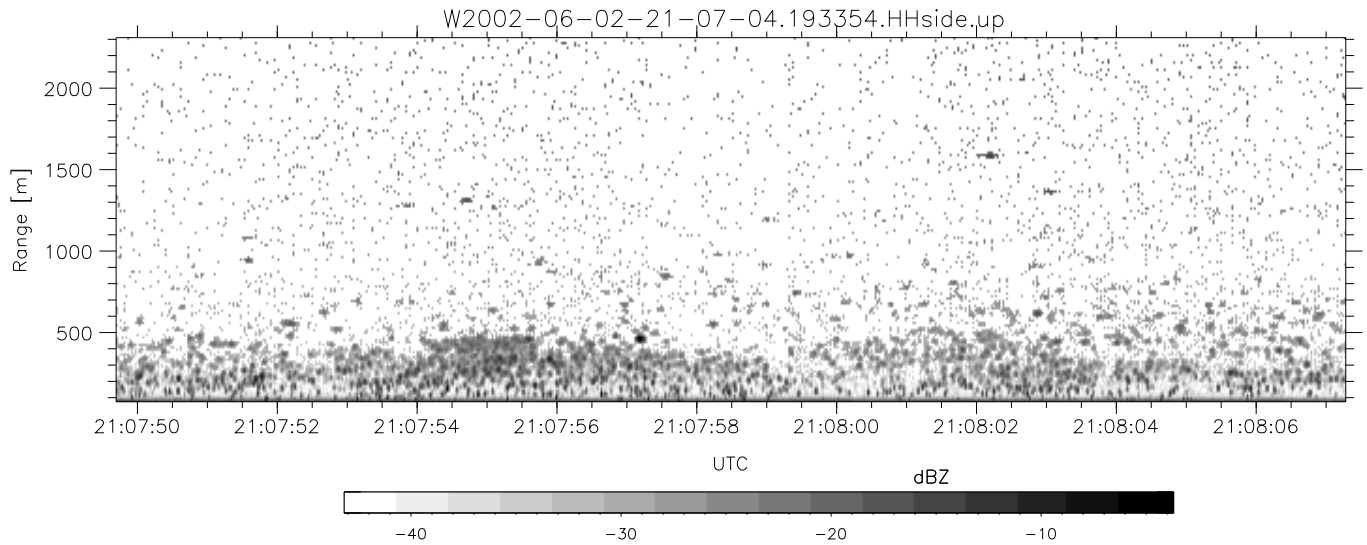
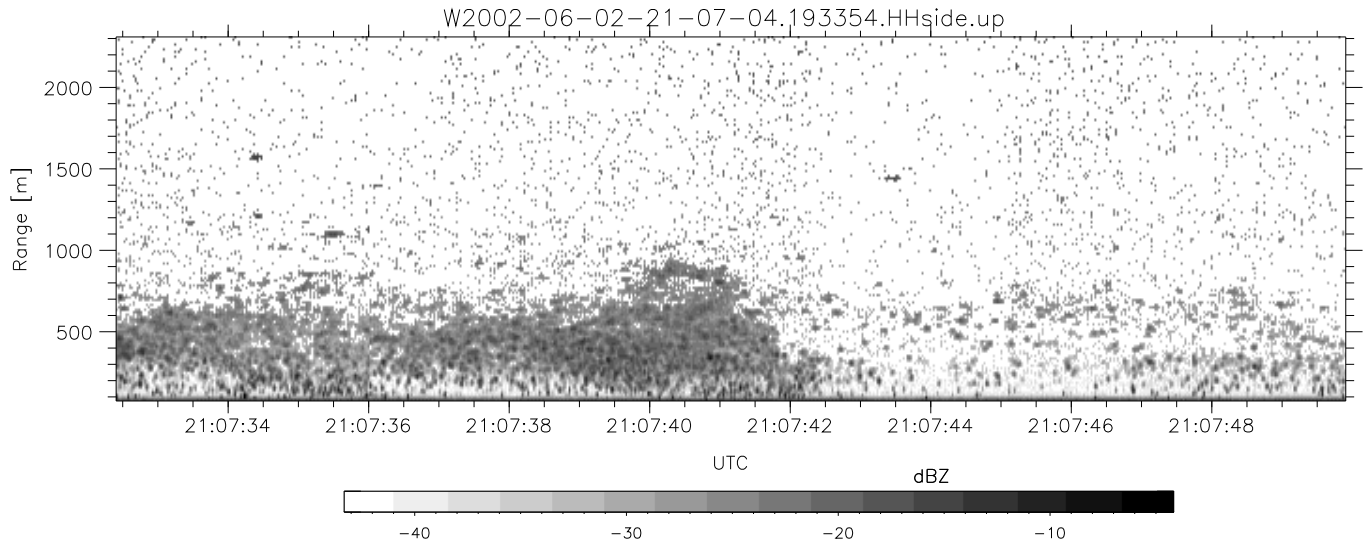


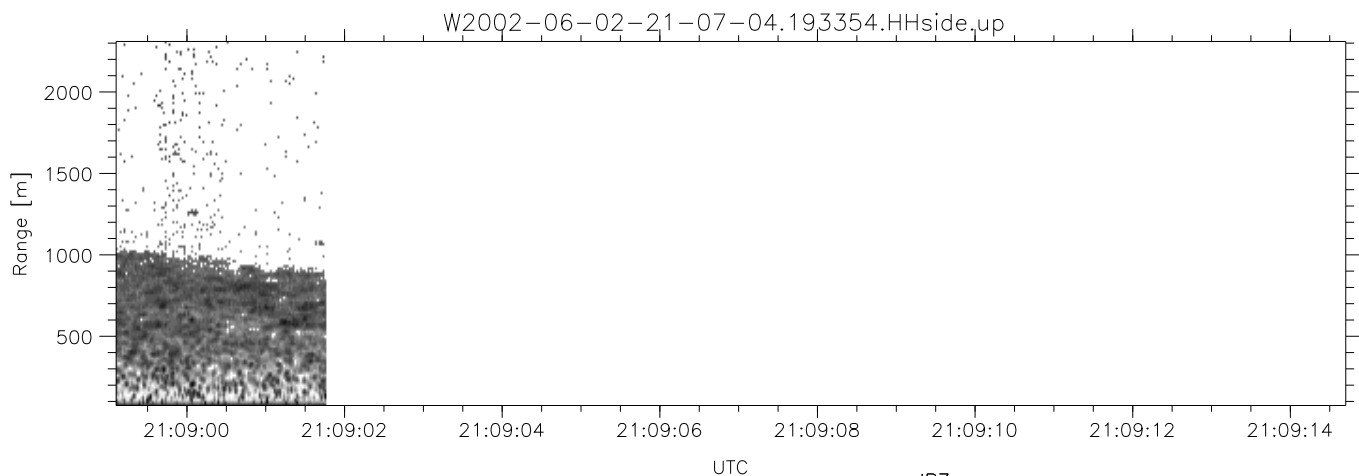
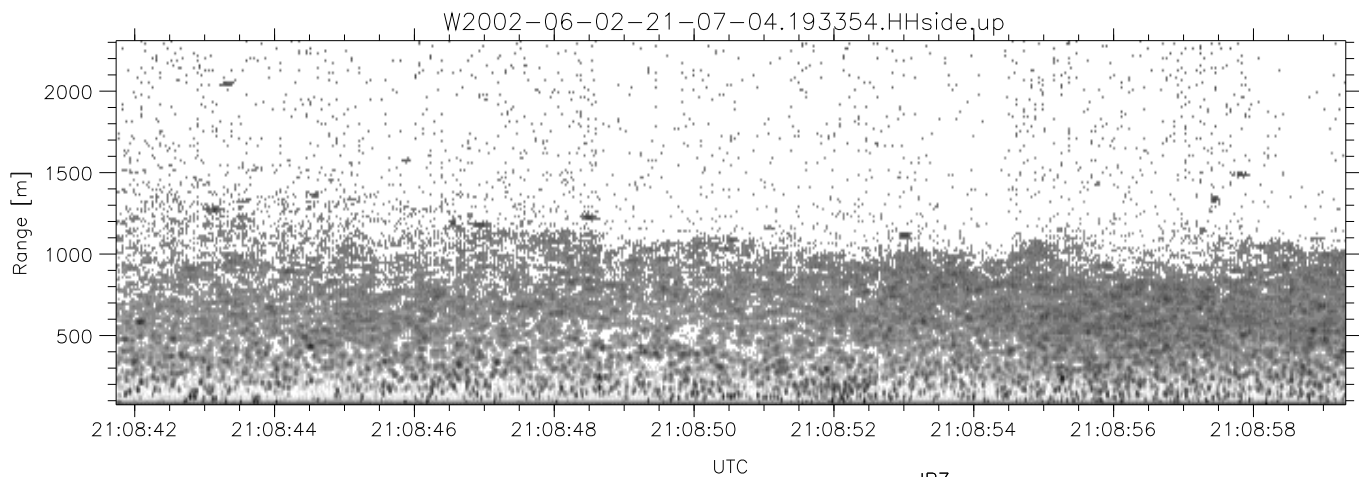
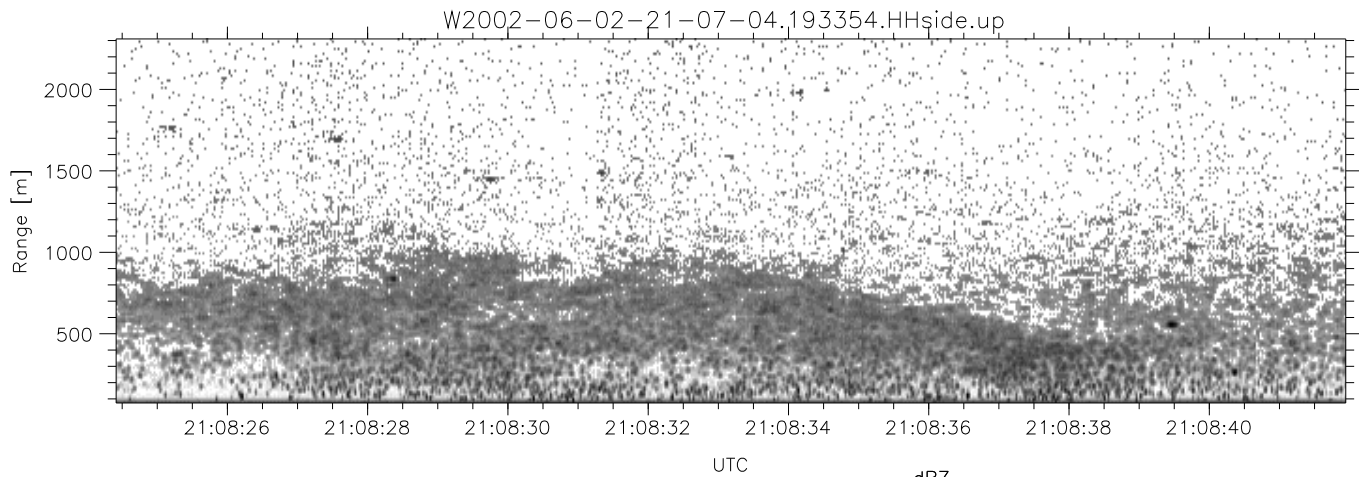
IHOP 2002 (dual-antenna config, modes 1,3,4,7) Data (cal: 49.0,50.0)

W2002-06-02-21-07-04 - SPPMAG	Min	Max	Mean	Std	Varc%	
IRIG:1,UTC: 19:33:54.42 to 21:30:38.63, Dur: 7004s	hhN(dB)	-66.55	-63.77	-64.57	-77.39	5.2
TimeLngth: 7004.21s, TimeInt: 128ms (7.8pps)	vvN(dB)	-69.70	-66.31	-67.83	-79.30	7.1
TimeCor=-13.0s, DSPDif(mn,mx,min):2142,20,5566613	hhL(dB)	-19.74	-1.94	-4.70	-11.68	20.1
PPS(min,max,std): 0,42,5.92	vhL(dB)	-46.33	-27.50	-30.55	-37.80	18.8
Prof: 3 to 54374, NumProf(t/r): 54371/5271	ppN(m/s)	-15.80	15.79	0.76	9.06	
ProcTime/Recs: 19:33:54-21:09:01/0-5270	ppT(m/s)	-0.02	0.01	-0.00	0.00	
MxACQtime: 17ms; DRate: 18.6KB/s; Flags: 0, 0, 0	vh/hh(dB)	-NaN	-33.39	-40.07	-38.26	151.
Pulse: 275ns, IFfilt: 5.0MHz; ppPol: HH	hnjmp(dB)	-0.95	1.53	0.15	-11.64	6.6
TxPol: H, PRF: 20 kHz	vnjmp(dB)	-1.06	1.36	0.10	-11.46	7.0
Range: Delay 75m, Spacing 15m, Gates 150						
Ave. Pulses: 348, Rng/Prof Aspect@90m/s: 1.3						



IHOP 2002 (dual-antenna config, modes 1,3,4,7) Data (cal: 49.0,50.0)

W2002-06-02-21-07-04 - SPPMAG						
IRIG:1,UTC: 19:33:54.42 to 21:30:38.63, Dur: 7004s	hhN(dB)	Min	Max	Mean	Std	Varc%
TimeLngth: 7004.21s, TimeInt: 128ms (7.8pps)	vvN(dB)	-66.55	-63.77	-64.57	-77.39	5.2
TimeCor=-13.0s, DSPDif(mn,mx,min):2142,20,5566613	hhL(dB)	-69.70	-66.31	-67.83	-79.30	7.1
PPS(min,max,std): 0,42,5.92	vhL(dB)	-19.74	-1.94	-4.70	-11.68	20.1
Prof: 3 to 54374, NumProf(t/r): 54371/5271	vhL(dB)	-46.33	-27.50	-30.55	-37.80	18.8
ProcTime/Recs: 19:33:54-21:09:01/0-5270	ppN(m/s)	-15.80	15.79	0.76	9.06	
MxACQtime: 17ms; DRate: 18.6KB/s; Flags: 0, 0, 0	ppT(m/s)	-0.02	0.01	-0.00	0.00	
Pulse: 275ns, IFfilt: 5.0MHz; ppPol: HH	vh/hh(dB)	-NaN	-33.39	-40.07	-38.26	151.
TxPol: H, PRF: 20 kHz	hnjmp(dB)	-0.95	1.53	0.15	-11.64	6.6
Range: Delay 75m, Spacing 15m, Gates 150	vnjmp(dB)	-1.06	1.36	0.10	-11.46	7.0
Ave. Pulses: 348, Rng/Prof Aspect@90m/s: 1.3						



IHOP 2002 (dual-antenna config, modes 1,3,4,7) Data (cal: 49.0,50.0)

	Min	Max	Mean	Std	Varc%
W2002-06-02-21-07-04 - SPPMAG					
IRIG:1,UTC: 19:33:54.42 to 21:30:38.63, Dur: 7004s	hhN (dB)	-66.55 -63.77	-64.57	-77.39	5.2
TimeLngth: 7004.21s, TimeInt: 128ms (7.8pps)	vvN (dB)	-69.70 -66.31	-67.83	-79.30	7.1
TimeCor=-13.0s, DSPDif(mn,mx,min):2142,20,5566613	hhL (dB)	-19.74 -1.94	-4.70	-11.68	20.1
PPS(min,max,std): 0,42,5.92	vhL (dB)	-46.33 -27.50	-30.55	-37.80	18.8
Prof: 3 to 54374, NumProf(t/r): 54371/5271	ppN (m/s)	-15.80 15.79	0.76	9.06	
ProcTime/Recs: 19:33:54-21:09:01/0-5270	ppT (m/s)	-0.02 0.01	-0.00	0.00	
MxACQtime: 17ms; DRate: 18.6KB/s; Flags: 0, 0, 0	vh/hh (dB)	-NaN -33.39	-40.07	-38.26	151.
Pulse: 275ns, IFfilt: 5.0MHz; ppPol: HH	hn_jmp (dB)	-0.95 1.53	0.15	-11.64	6.6
TxPol: H, PRF: 20 kHz	vn_jmp (dB)	-1.06 1.36	0.10	-11.46	7.0
Range: Delay 75m, Spacing 15m, Gates 150					
Ave. Pulses: 348, Rng/Prof Aspect@90m/s: 1.3					