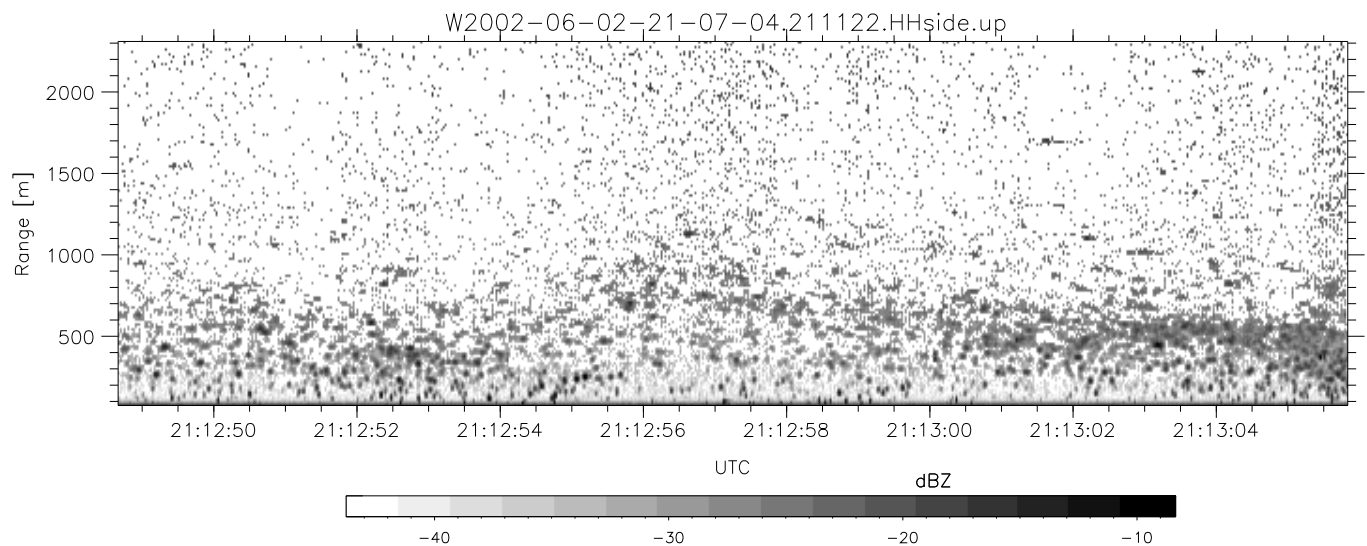
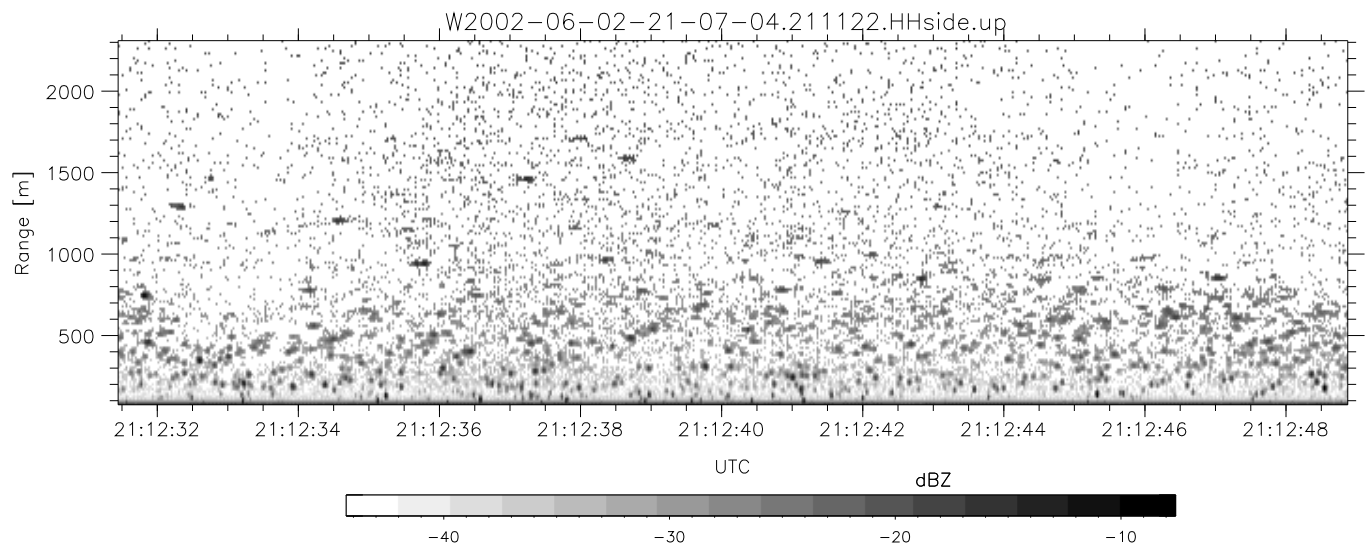
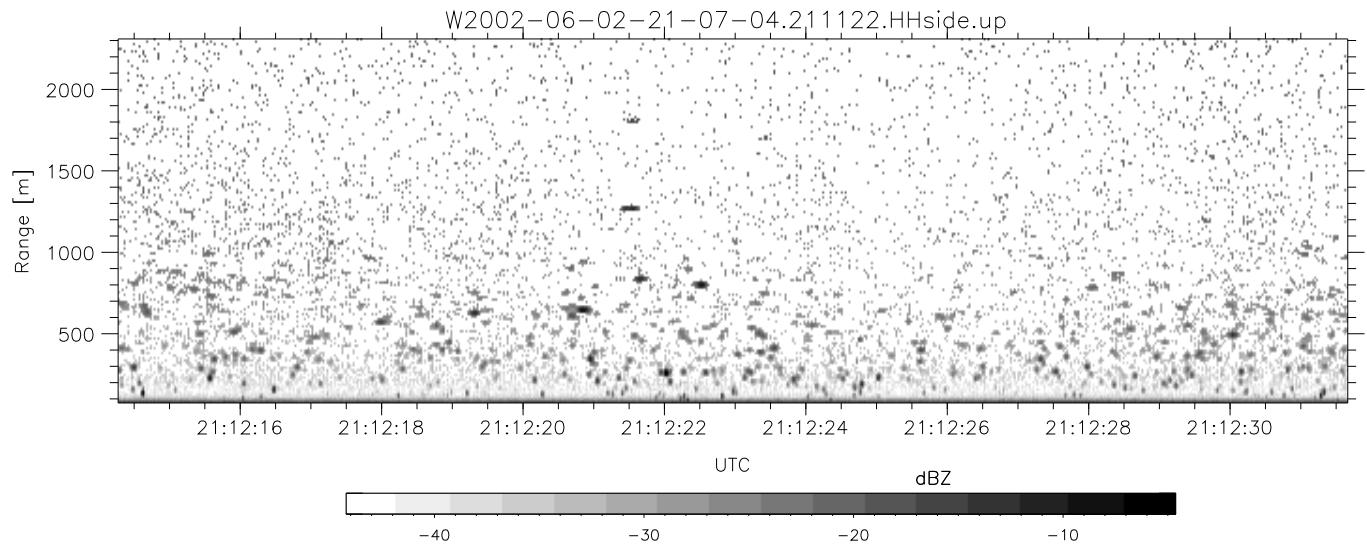


IHOP 2002 (dual-antenna config, modes 1,3,4,7) Data (cal: 49.0,50.0)

W2002-06-02-21-07-04 - SPPMAG
 IRIG:1,UTC: 19:33:54.42 to 21:30:38.63, Dur: 7004s
 TimeLngth: 7004.21s, TimeInt: 128ms (7.8pps)
 TimeCor=-13.0s, DSPDif(mn,mx,min):26,20,512
 PPS(min,max,std): 14,42,8.42
 Prof: 3 to 54374, NumProf(t/r): 54371/5271
 ProcTime/Recs: 21:11:22-21:13:43/10542-15812
 MxACQtime: 17ms; DRate: 18.6KB/s; Flags: 0, 0, 0
 Pulse: 275ns, IFfilt: 5.0MHz; ppPol: HH
 TxPol: H, PRF: 20 kHz
 Range: Delay 75m, Spacing 15m, Gates 150
 Ave. Pulses: 348, Rng/Prof Aspect@90m/s: 1.3

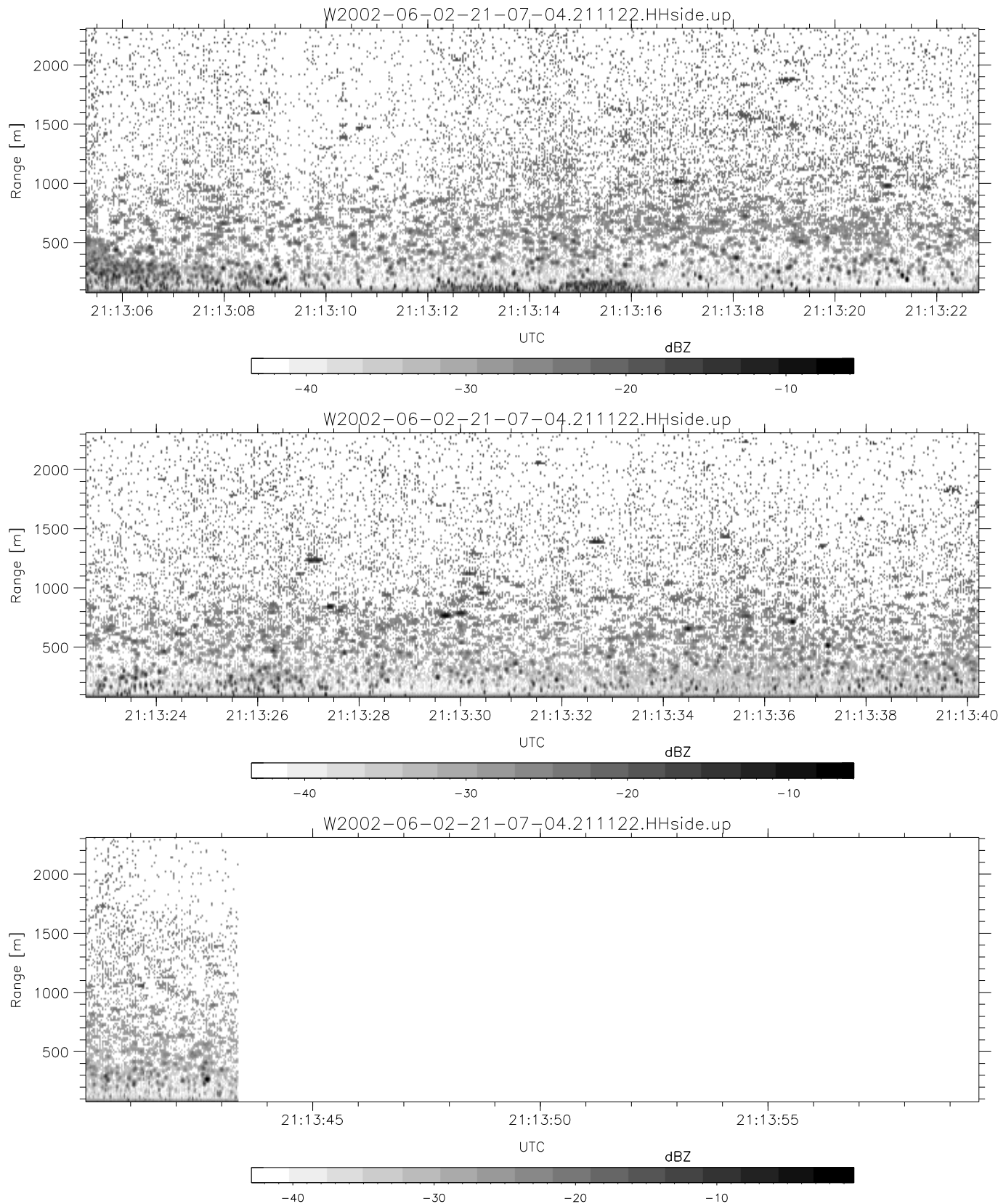
| | Min | Max | Mean | Std | Varc% |
|-----------|--------|--------|--------|--------|-------|
| hhN(dB) | -65.44 | -63.85 | -64.64 | -77.63 | 5.0 |
| vvN(dB) | -68.67 | -66.61 | -67.86 | -79.85 | 6.3 |
| hhL(dB) | -8.36 | -3.50 | -6.13 | -14.07 | 16.0 |
| vhL(dB) | -33.61 | -29.34 | -31.88 | -40.34 | 14.2 |
| ppN(m/s) | -15.80 | 15.79 | 0.35 | 9.13 | |
| ppT(m/s) | -0.02 | 0.02 | -0.00 | 0.00 | |
| vh/hh(dB) | -NaN | -32.78 | -39.89 | -38.05 | 152. |
| hnjmp(dB) | -0.88 | 1.03 | 0.14 | -11.57 | 6.8 |
| vnjmp(dB) | -0.98 | 1.15 | 0.12 | -11.54 | 6.8 |



IHOP 2002 (dual-antenna config, modes 1,3,4,7) Data (cal: 49.0,50.0)

W2002-06-02-21-07-04 - SPPMAG
 IRIG:1,UTC: 19:33:54.42 to 21:30:38.63, Dur: 7004s
 TimeLngth: 7004.21s, TimeInt: 128ms (7.8pps)
 TimeCor=-13.0s, DSPDif(mn,mx,min):26,20,512
 PPS(min,max,std): 14,42,8.42
 Prof: 3 to 54374, NumProf(t/r): 54371/5271
 ProcTime/Recs: 21:11:22-21:13:43/10542-15812
 MxACQtime: 17ms; DRate: 18.6KB/s; Flags: 0, 0, 0
 Pulse: 275ns, IFfilt: 5.0MHz; ppPol: HH
 TxPol: H, PRF: 20 kHz
 Range: Delay 75m, Spacing 15m, Gates 150
 Ave. Pulses: 348, Rng/Prof Aspect@90m/s: 1.3

| | Min | Max | Mean | Std | Varc% |
|-----------|--------|--------|--------|--------|-------|
| hhN(dB) | -65.44 | -63.85 | -64.64 | -77.63 | 5.0 |
| vvN(dB) | -68.67 | -66.61 | -67.86 | -79.85 | 6.3 |
| hhL(dB) | -8.36 | -3.50 | -6.13 | -14.07 | 16.0 |
| vhL(dB) | -33.61 | -29.34 | -31.88 | -40.34 | 14.2 |
| ppN(m/s) | -15.80 | 15.79 | 0.35 | 9.13 | |
| ppT(m/s) | -0.02 | 0.02 | -0.00 | 0.00 | |
| vh/hh(dB) | -NaN | -32.78 | -39.89 | -38.05 | 152. |
| hnjmp(dB) | -0.88 | 1.03 | 0.14 | -11.57 | 6.8 |
| vnjmp(dB) | -0.98 | 1.15 | 0.12 | -11.54 | 6.8 |



IHOP 2002 (dual-antenna config, modes 1,3,4,7) Data (cal: 49.0,50.0)

W2002-06-02-21-07-04 - SPPMAG
 IRIG:1,UTC: 19:33:54.42 to 21:30:38.63, Dur: 7004s
 TimeLngth: 7004.21s, TimeInt: 128ms (7.8pps)
 TimeCor=-13.0s, DSPDif(mn,mx,min):26,20,512
 PPS(min,max,std): 14,42,8.42
 Prof: 3 to 54374, NumProf(t/r): 54371/5271
 ProcTime/Recs: 21:11:22-21:13:43/10542-15812
 MxACQtime: 17ms; DRate: 18.6KB/s; Flags: 0, 0, 0
 Pulse: 275ns, IFfilt: 5.0MHz; ppPol: HH
 TxPol: H, PRF: 20 kHz
 Range: Delay 75m, Spacing 15m, Gates 150
 Ave. Pulses: 348, Rng/Prof Aspect@90m/s: 1.3

| | Min | Max | Mean | Std | Varc% |
|-----------|--------|--------|--------|--------|-------|
| hhN(dB) | -65.44 | -63.85 | -64.64 | -77.63 | 5.0 |
| vvN(dB) | -68.67 | -66.61 | -67.86 | -79.85 | 6.3 |
| hhL(dB) | -8.36 | -3.50 | -6.13 | -14.07 | 16.0 |
| vhL(dB) | -33.61 | -29.34 | -31.88 | -40.34 | 14.2 |
| ppN(m/s) | -15.80 | 15.79 | 0.35 | 9.13 | |
| ppT(m/s) | -0.02 | 0.02 | -0.00 | 0.00 | |
| vh/hh(dB) | -NaN | -32.78 | -39.89 | -38.05 | 152. |
| hnjmp(dB) | -0.88 | 1.03 | 0.14 | -11.57 | 6.8 |
| vnjmp(dB) | -0.98 | 1.15 | 0.12 | -11.54 | 6.8 |