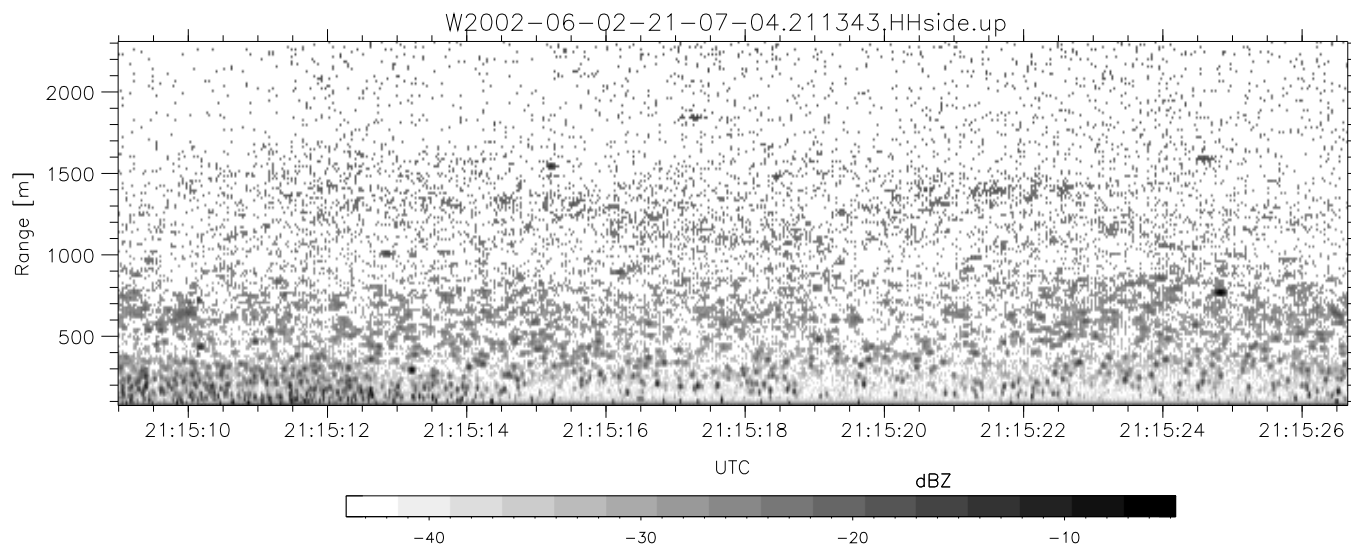
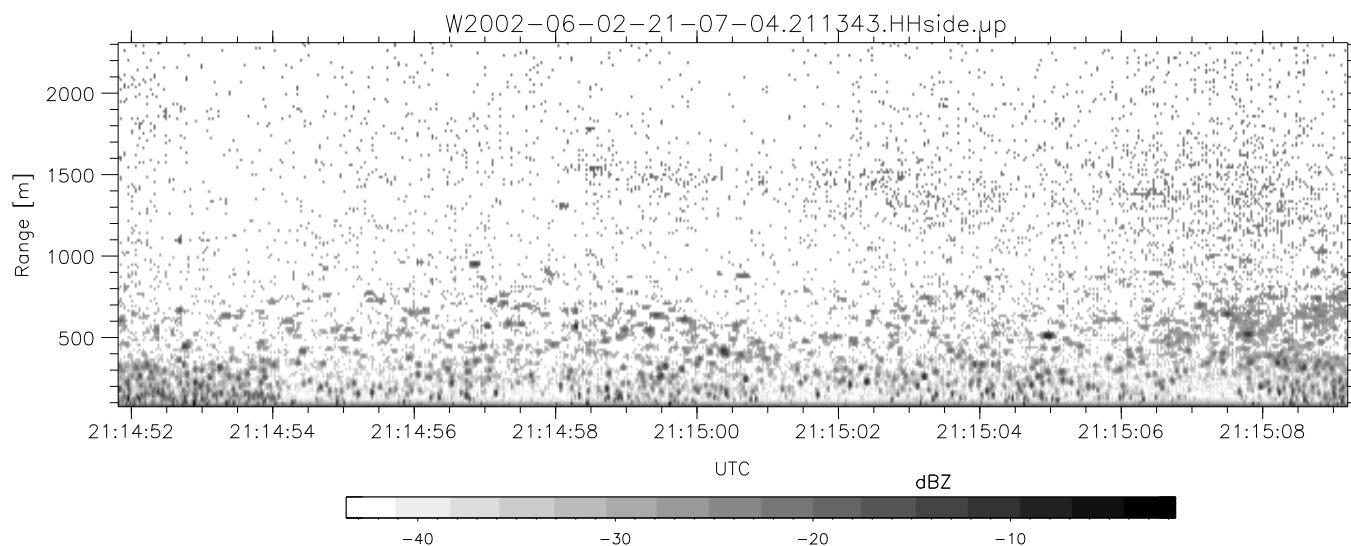
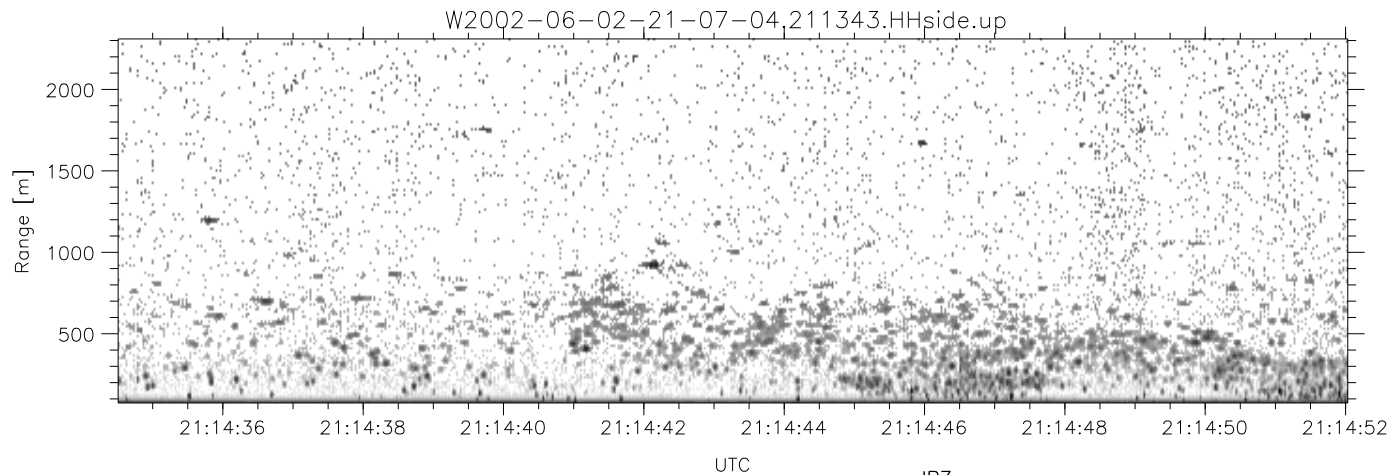


IHOP 2002 (dual-antenna config, modes 1,3,4,7) Data (cal: 49.0,50.0)

W2002-06-02-21-07-04 - SPPMAG  
 IRIG:1,UTC: 19:33:54.42 to 21:30:38.63, Dur: 7004s  
 TimeLngth: 7004.21s, TimeInt: 128ms (7.8pps)  
 TimeCor=-13.0s, DSPDif(mn,mx,min):24,20,647  
 PPS(min,max,std): 12,42,8.16  
 Prof: 3 to 54374, NumProf(t/r): 54371/5271  
 ProcTime/Recs: 21:13:43-21:16:04/15813-21083  
 MxACQtime: 17ms; DRate: 18.6KB/s; Flags: 0, 0, 0  
 Pulse: 275ns, IFfilt: 5.0MHz; ppPol: HH  
 TxPol: H, PRF: 20 kHz  
 Range: Delay 75m, Spacing 15m, Gates 150  
 Ave. Pulses: 348, Rng/Prof Aspect@90m/s: 1.3

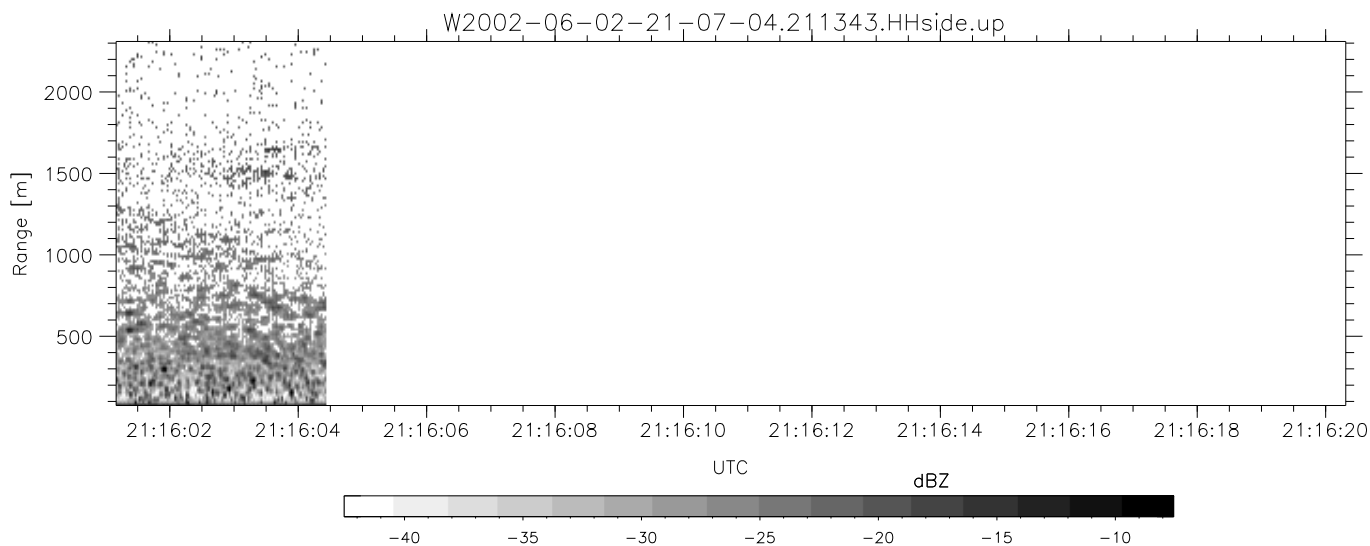
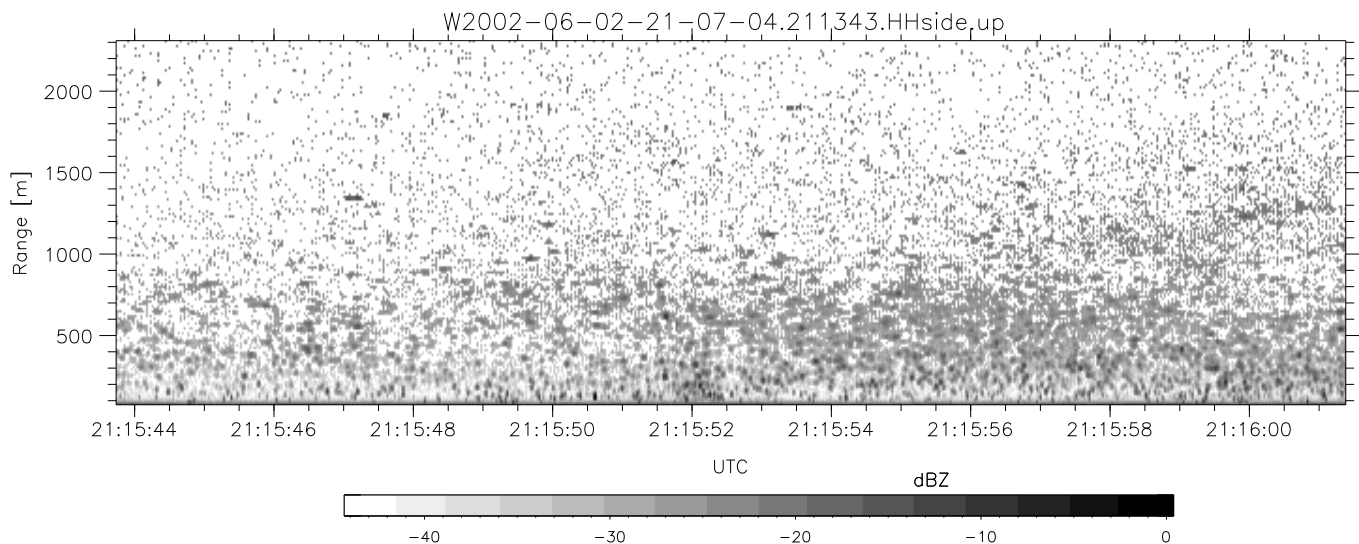
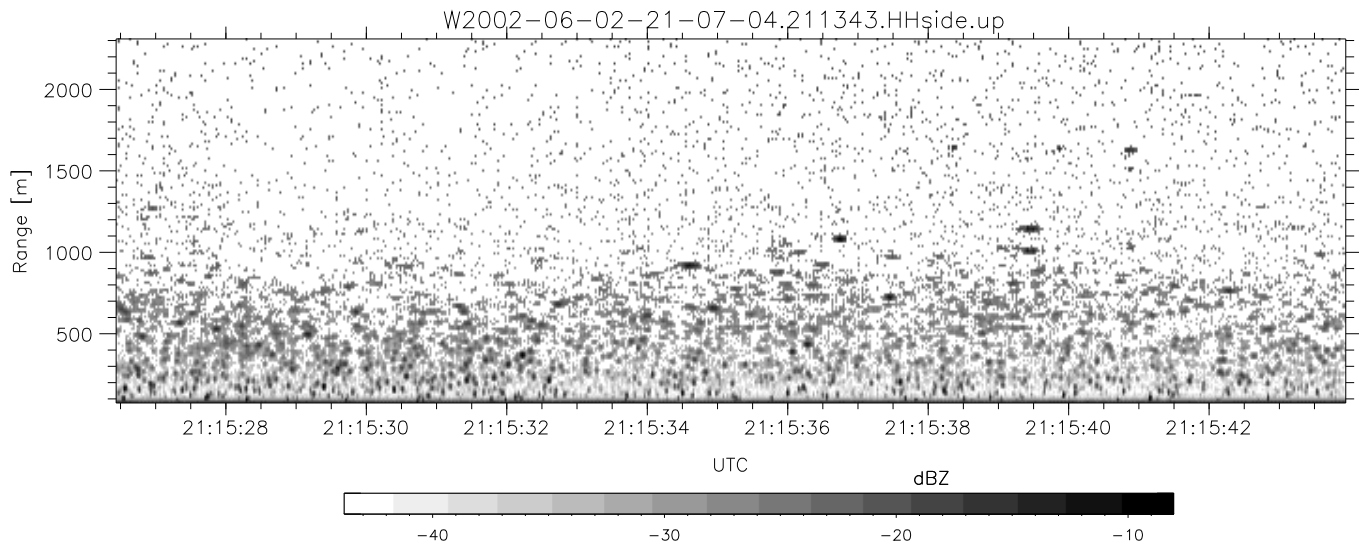
	Min	Max	Mean	Std	Varc%
hhN(dB)	-65.54	-63.90	-64.67	-77.52	5.2
vvN(dB)	-68.71	-66.35	-67.82	-79.47	6.8
hhL(dB)	-9.13	-3.60	-6.82	-14.79	15.9
vhL(dB)	-33.71	-29.36	-32.01	-40.71	13.5
ppN(m/s)	-15.80	15.80	0.39	9.07	
ppT(m/s)	-0.02	0.02	-0.00	0.01	
vh/hh(dB)	-NaN	-33.04	-40.77	-38.77	158.
hnjmp(dB)	-1.14	0.93	-0.13	-11.84	6.7
vnjmp(dB)	-1.10	0.89	-0.10	-11.78	6.8



IHOP 2002 (dual-antenna config, modes 1,3,4,7) Data (cal: 49.0,50.0)

W2002-06-02-21-07-04 - SPPMAG  
 IRIG:1,UTC: 19:33:54.42 to 21:30:38.63, Dur: 7004s  
 TimeLngth: 7004.21s, TimeInt: 128ms (7.8pps)  
 TimeCor=-13.0s, DSPDif(mn,mx,min):24,20,647  
 PPS(min,max,std): 12,42,8.16  
 Prof: 3 to 54374, NumProf(t/r): 54371/5271  
 ProcTime/Recs: 21:13:43-21:16:04/15813-21083  
 MxACQtime: 17ms; DRate: 18.6KB/s; Flags: 0, 0, 0  
 Pulse: 275ns, IFfilt: 5.0MHz; ppPol: HH  
 TxPol: H, PRF: 20 kHz  
 Range: Delay 75m, Spacing 15m, Gates 150  
 Ave. Pulses: 348, Rng/Prof Aspect@90m/s: 1.3

	Min	Max	Mean	Std	Varc%
hhN(dB)	-65.54	-63.90	-64.67	-77.52	5.2
vvN(dB)	-68.71	-66.35	-67.82	-79.47	6.8
hhL(dB)	-9.13	-3.60	-6.82	-14.79	15.9
vhL(dB)	-33.71	-29.36	-32.01	-40.71	13.5
ppN(m/s)	-15.80	15.80	0.39	9.07	
ppT(m/s)	-0.02	0.02	-0.00	0.01	
vh/hh(dB)	-NaN	-33.04	-40.77	-38.77	158.
hnjmp(dB)	-1.14	0.93	-0.13	-11.84	6.7
vnjmp(dB)	-1.10	0.89	-0.10	-11.78	6.8



IHOP 2002 (dual-antenna config, modes 1,3,4,7) Data (cal: 49.0,50.0)

W2002-06-02-21-07-04 - SPPMAG  
 IRIG:1,UTC: 19:33:54.42 to 21:30:38.63, Dur: 7004s  
 TimeLngth: 7004.21s, TimeInt: 128ms (7.8pps)  
 TimeCor=-13.0s, DSPDif(mn,mx,min):24,20,647  
 PPS(min,max,std): 12,42,8.16  
 Prof: 3 to 54374, NumProf(t/r): 54371/5271  
 ProcTime/Recs: 21:13:43-21:16:04/15813-21083  
 MxACQtime: 17ms; DRate: 18.6KB/s; Flags: 0, 0, 0  
 Pulse: 275ns, IFfilt: 5.0MHz; ppPol: HH  
 TxPol: H, PRF: 20 kHz  
 Range: Delay 75m, Spacing 15m, Gates 150  
 Ave. Pulses: 348, Rng/Prof Aspect@90m/s: 1.3

	Min	Max	Mean	Std	Varc%
hhN(dB)	-65.54	-63.90	-64.67	-77.52	5.2
vvN(dB)	-68.71	-66.35	-67.82	-79.47	6.8
hhL(dB)	-9.13	-3.60	-6.82	-14.79	15.9
vhL(dB)	-33.71	-29.36	-32.01	-40.71	13.5
ppN(m/s)	-15.80	15.80	0.39	9.07	
ppT(m/s)	-0.02	0.02	-0.00	0.01	
vh/hh(dB)	-NaN	-33.04	-40.77	-38.77	158.
hnjmp(dB)	-1.14	0.93	-0.13	-11.84	6.7
vnjmp(dB)	-1.10	0.89	-0.10	-11.78	6.8