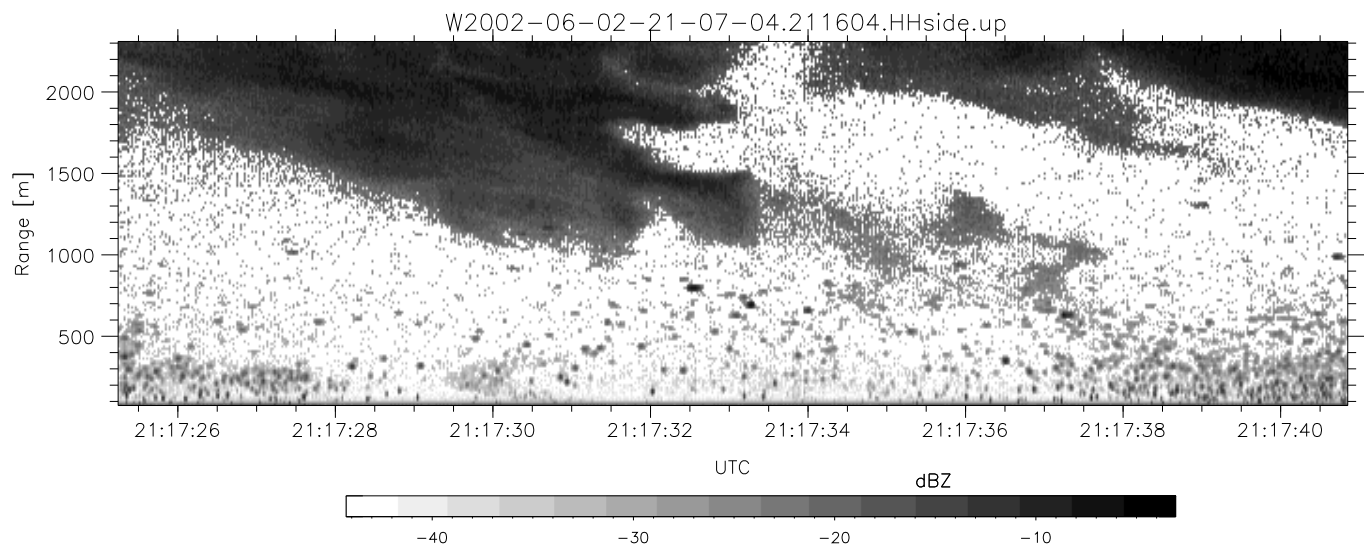
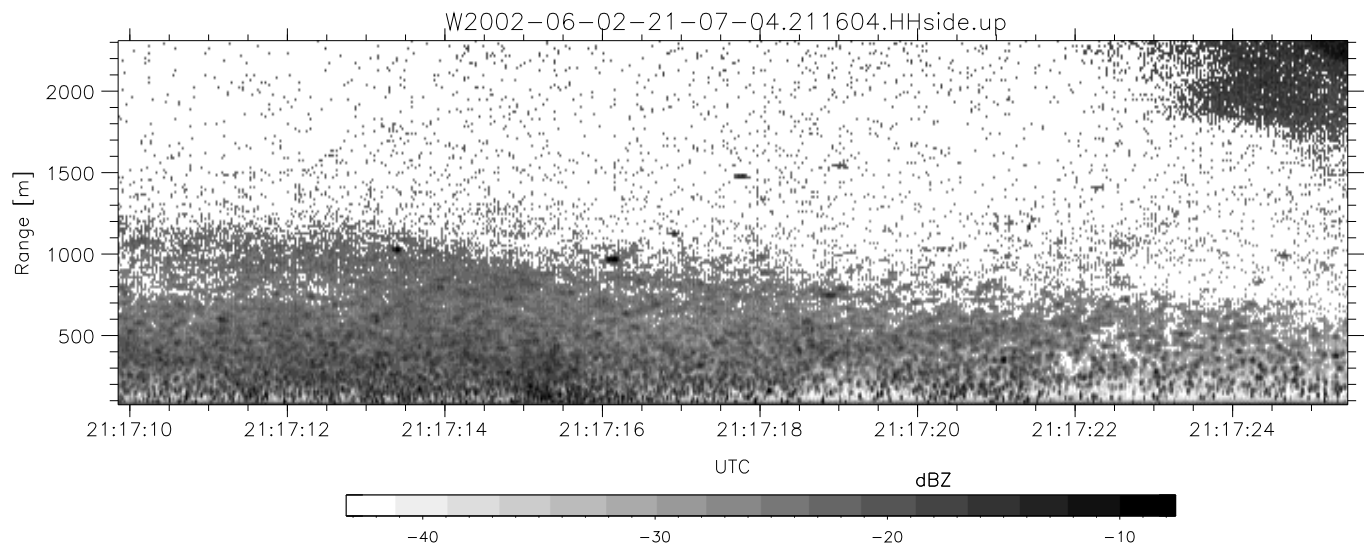
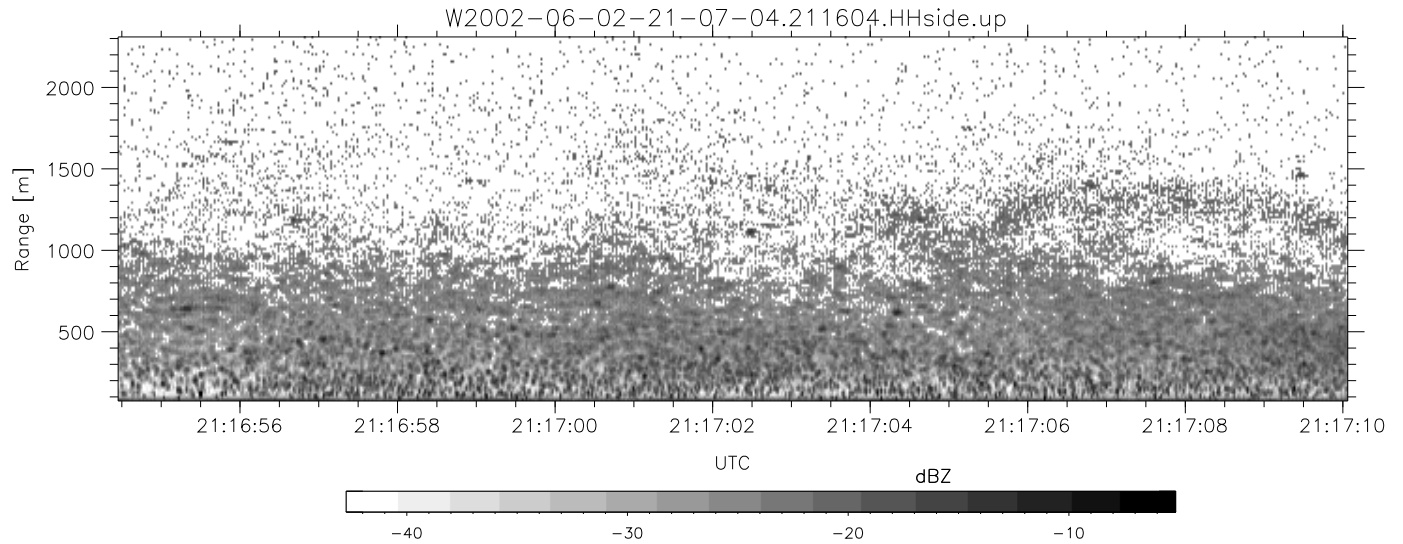


IHOP 2002 (dual-antenna config, modes 1,3,4,7) Data (cal: 49.0,50.0)

W2002-06-02-21-07-04 - SPPMAG  
 IRIG:1,UTC: 19:33:54.42 to 21:30:38.63, Dur: 7004s  
 TimeLngth: 7004.21s, TimeInt: 128ms (7.8pps)  
 TimeCor=-13.0s, DSPDif(mn,mx,min):27,20,497  
 PPS(min,max,std): 14,42,4.73  
 Prof: 3 to 54374, NumProf(t/r): 54371/5271  
 ProcTime/Recs: 21:16:04-21:18:14/21084-26354  
 MxACQtime: 17ms; DRate: 18.6KB/s; Flags: 0, 0, 0  
 Pulse: 275ns, IFfilt: 5.0MHz; ppPol: HH  
 TxPol: H, PRF: 20 kHz  
 Range: Delay 75m, Spacing 15m, Gates 150  
 Ave. Pulses: 348, Rng/Prof Aspect@90m/s: 1.3

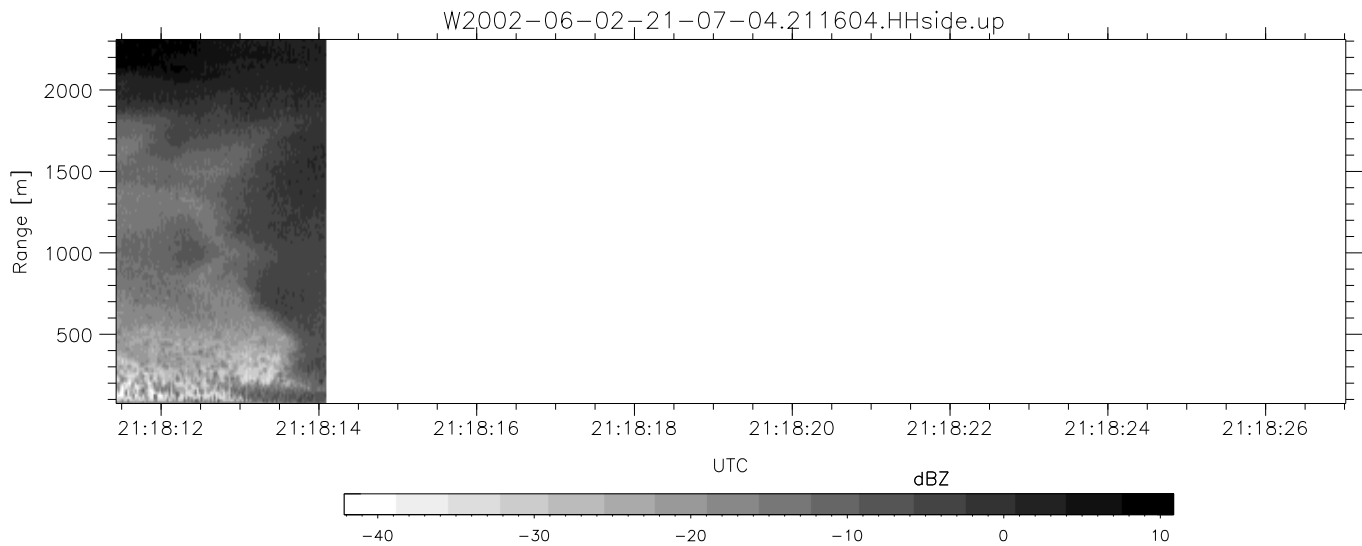
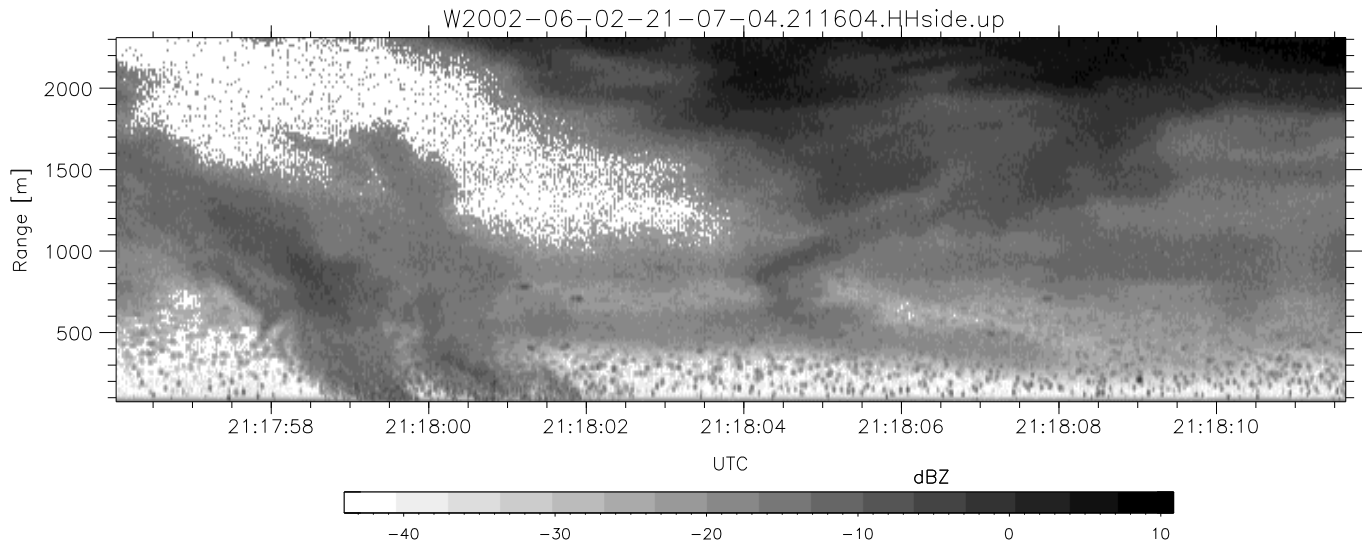
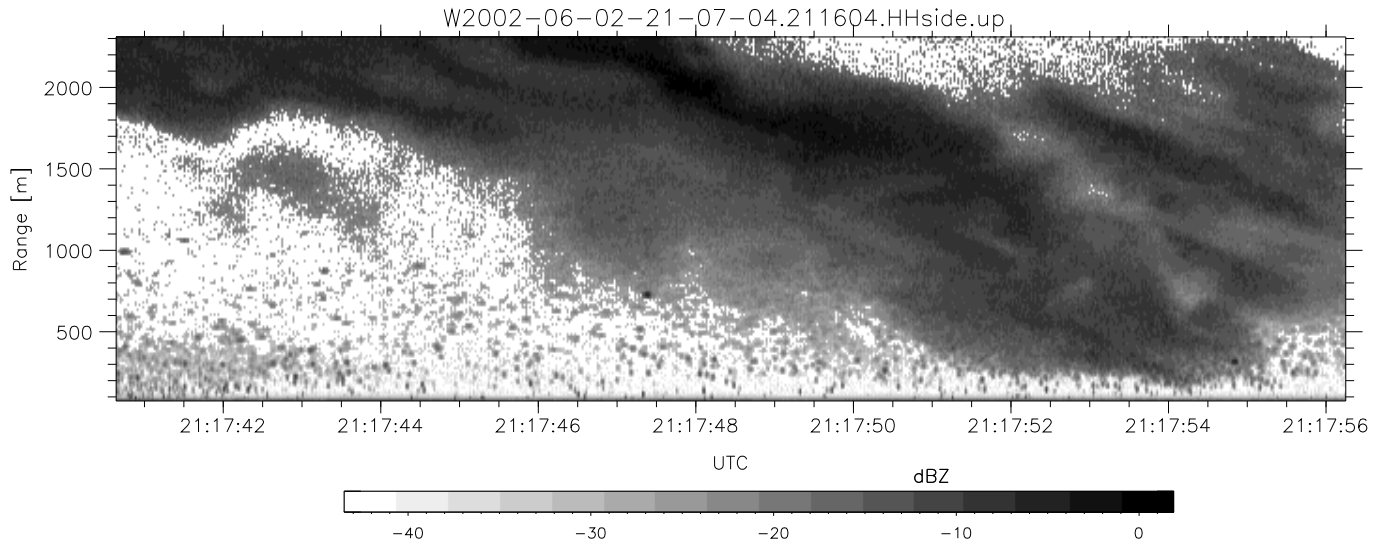
	Min	Max	Mean	Std	Varc%
hhN(dB)	-65.36	-63.37	-64.46	-76.46	6.3
vvN(dB)	-68.70	-67.15	-67.95	-80.98	5.0
hhL(dB)	-8.76	-3.19	-6.96	-15.07	15.4
vhL(dB)	-33.55	-29.25	-32.22	-40.56	14.7
ppN(m/s)	-15.80	15.80	-0.08	9.08	
ppT(m/s)	-0.02	0.02	-0.00	0.01	
vh/hh(dB)	-NaN	-34.20	-40.61	-39.99	115.
hnjmp(dB)	-0.86	1.18	0.15	-11.61	6.7
vnjmp(dB)	-0.94	1.13	0.12	-11.48	6.9



IHOP 2002 (dual-antenna config, modes 1,3,4,7) Data (cal: 49.0,50.0)

W2002-06-02-21-07-04 - SPPMAG  
 IRIG:1,UTC: 19:33:54.42 to 21:30:38.63, Dur: 7004s  
 TimeLngth: 7004.21s, TimeInt: 128ms (7.8pps)  
 TimeCor=-13.0s, DSPDif(mn,mx,min):27,20,497  
 PPS(min,max,std): 14,42,4.73  
 Prof: 3 to 54374, NumProf(t/r): 54371/5271  
 ProcTime/Recs: 21:16:04-21:18:14/21084-26354  
 MxACQtime: 17ms; DRate: 18.6KB/s; Flags: 0, 0, 0  
 Pulse: 275ns, IFfilt: 5.0MHz; ppPol: HH  
 TxPol: H, PRF: 20 kHz  
 Range: Delay 75m, Spacing 15m, Gates 150  
 Ave. Pulses: 348, Rng/Prof Aspect@90m/s: 1.3

	Min	Max	Mean	Std	Varc%
hhN(dB)	-65.36	-63.37	-64.46	-76.46	6.3
vvN(dB)	-68.70	-67.15	-67.95	-80.98	5.0
hhL(dB)	-8.76	-3.19	-6.96	-15.07	15.4
vhL(dB)	-33.55	-29.25	-32.22	-40.56	14.7
ppN(m/s)	-15.80	15.80	-0.08	9.08	
ppT(m/s)	-0.02	0.02	-0.00	0.01	
vh/hh(dB)	-NaN	-34.20	-40.61	-39.99	115.
hnjmp(dB)	-0.86	1.18	0.15	-11.61	6.7
vnjmp(dB)	-0.94	1.13	0.12	-11.48	6.9



IHOP 2002 (dual-antenna config, modes 1,3,4,7) Data (cal: 49.0,50.0)

W2002-06-02-21-07-04 - SPPMAG  
 IRIG:1,UTC: 19:33:54.42 to 21:30:38.63, Dur: 7004s  
 TimeLngth: 7004.21s, TimeInt: 128ms (7.8pps)  
 TimeCor=-13.0s, DSPDif(mn,mx,min):27,20,497  
 PPS(min,max,std): 14,42,4.73  
 Prof: 3 to 54374, NumProf(t/r): 54371/5271  
 ProcTime/Recs: 21:16:04-21:18:14/21084-26354  
 MxACQtime: 17ms; DRate: 18.6KB/s; Flags: 0, 0, 0  
 Pulse: 275ns, IFfilt: 5.0MHz; ppPol: HH  
 TxPol: H, PRF: 20 kHz  
 Range: Delay 75m, Spacing 15m, Gates 150  
 Ave. Pulses: 348, Rng/Prof Aspect@90m/s: 1.3

	Min	Max	Mean	Std	Varc%
hhN(dB)	-65.36	-63.37	-64.46	-76.46	6.3
vvN(dB)	-68.70	-67.15	-67.95	-80.98	5.0
hhL(dB)	-8.76	-3.19	-6.96	-15.07	15.4
vhL(dB)	-33.55	-29.25	-32.22	-40.56	14.7
ppN(m/s)	-15.80	15.80	-0.08	9.08	
ppT(m/s)	-0.02	0.02	-0.00	0.01	
vh/hh(dB)	-NaN	-34.20	-40.61	-39.99	115.
hnjmp(dB)	-0.86	1.18	0.15	-11.61	6.7
vnjmp(dB)	-0.94	1.13	0.12	-11.48	6.9