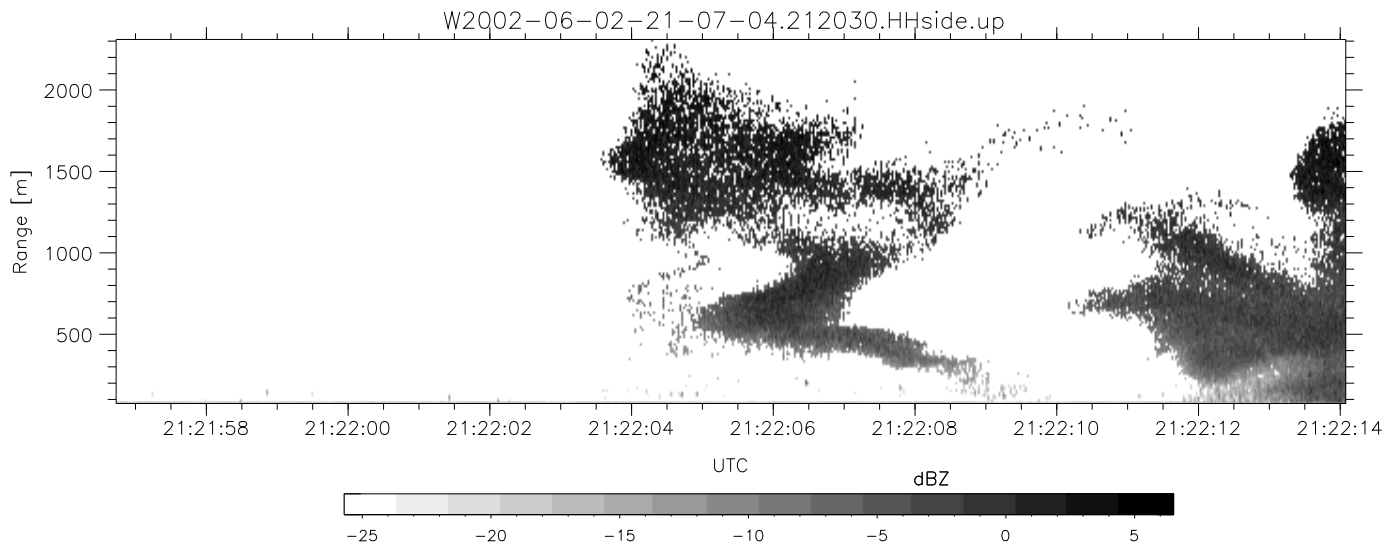
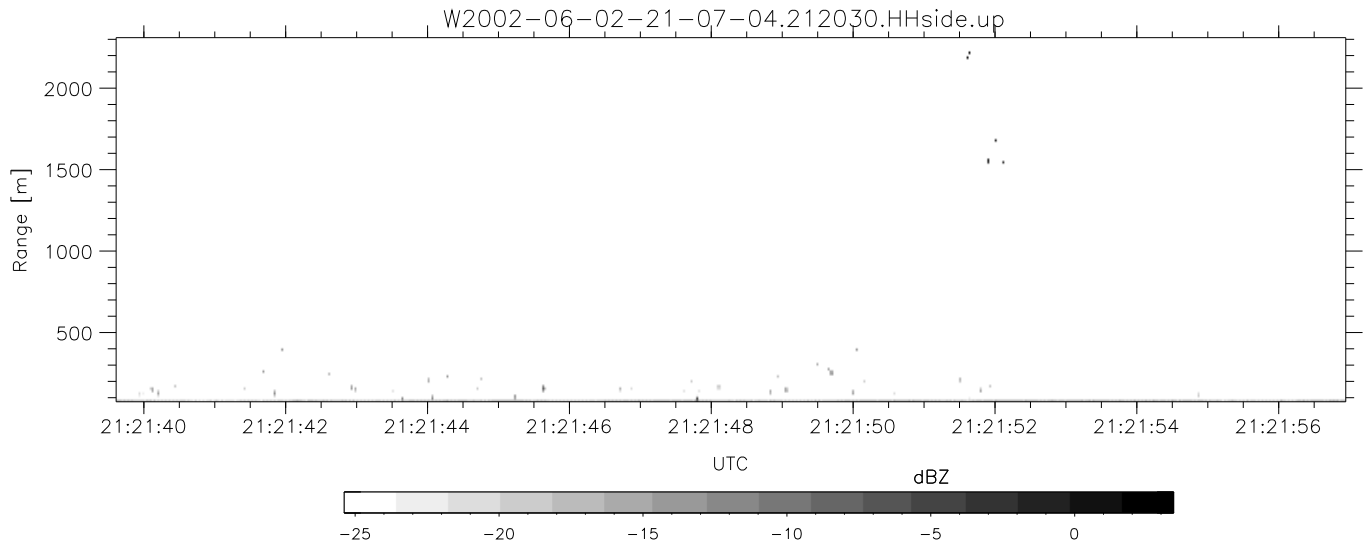
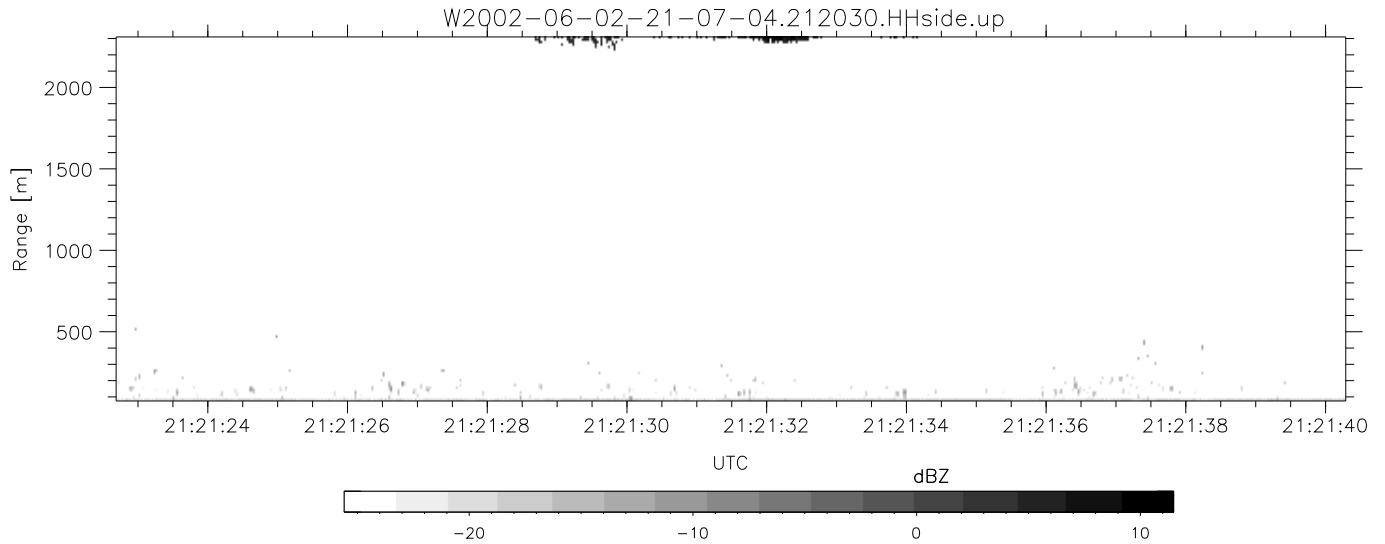


IHOP 2002 (dual-antenna config, modes 1,3,4,7) Data (cal: 49.0,50.0)

W2002-06-02-21-07-04 - SPPMAG
 IRIG:1,UTC: 19:33:54.42 to 21:30:38.63, Dur: 7004s
 TimeLngth: 7004.21s, TimeInt: 128ms (7.8pps)
 TimeCor=-13.0s, DSPDif(mn,mx,min):28,20,739
 PPS(min,max,std): 15,42,7.86
 Prof: 3 to 54374, NumProf(t/r): 54371/5271
 ProcTime/Recs: 21:20:30-21:22:51/31626-36896
 MxACQtime: 17ms; DRate: 18.6KB/s; Flags: 0, 0, 0
 Pulse: 275ns, IFfilt: 5.0MHz; ppPol: HH
 TxPol: H, PRF: 20 kHz
 Range: Delay 75m, Spacing 15m, Gates 150
 Ave. Pulses: 348, Rng/Prof Aspect@90m/s: 1.3

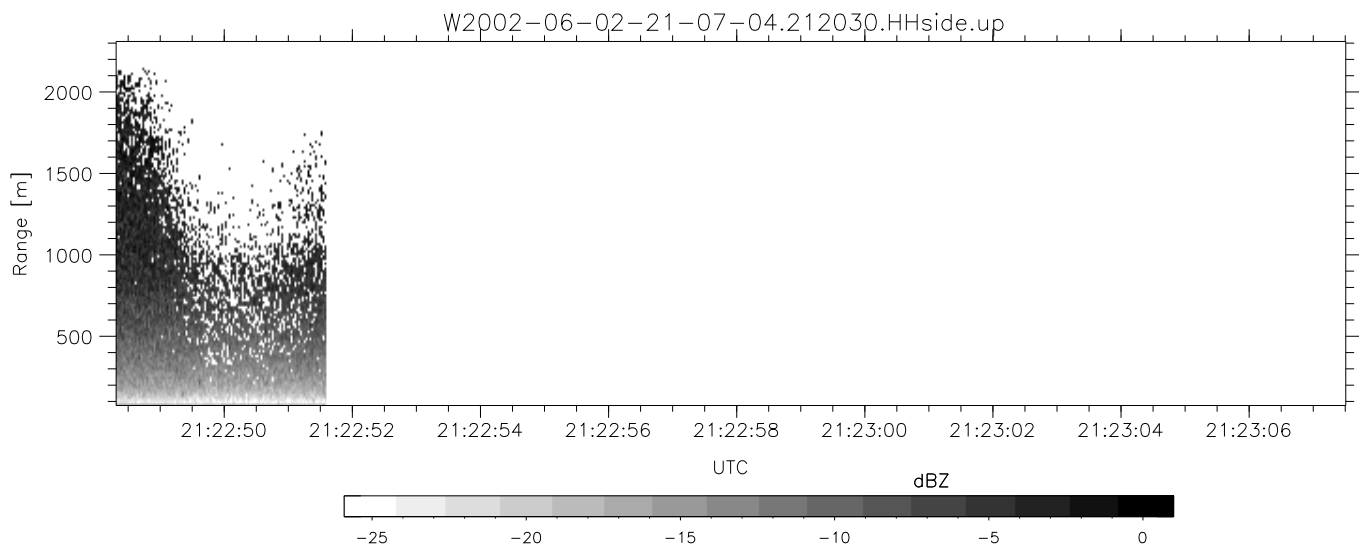
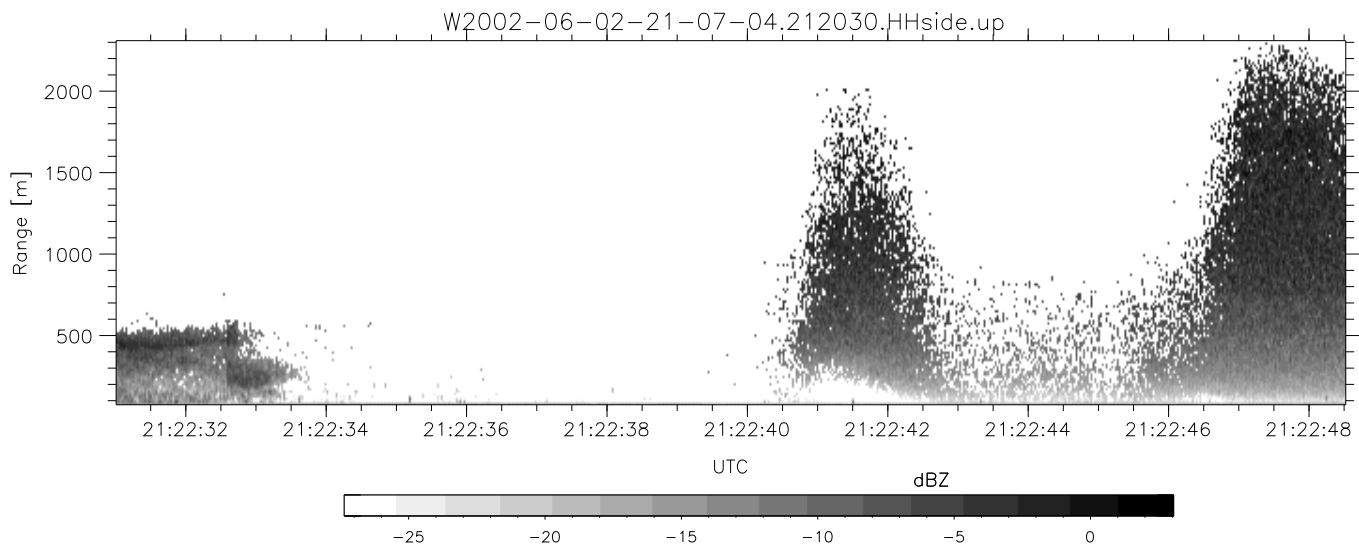
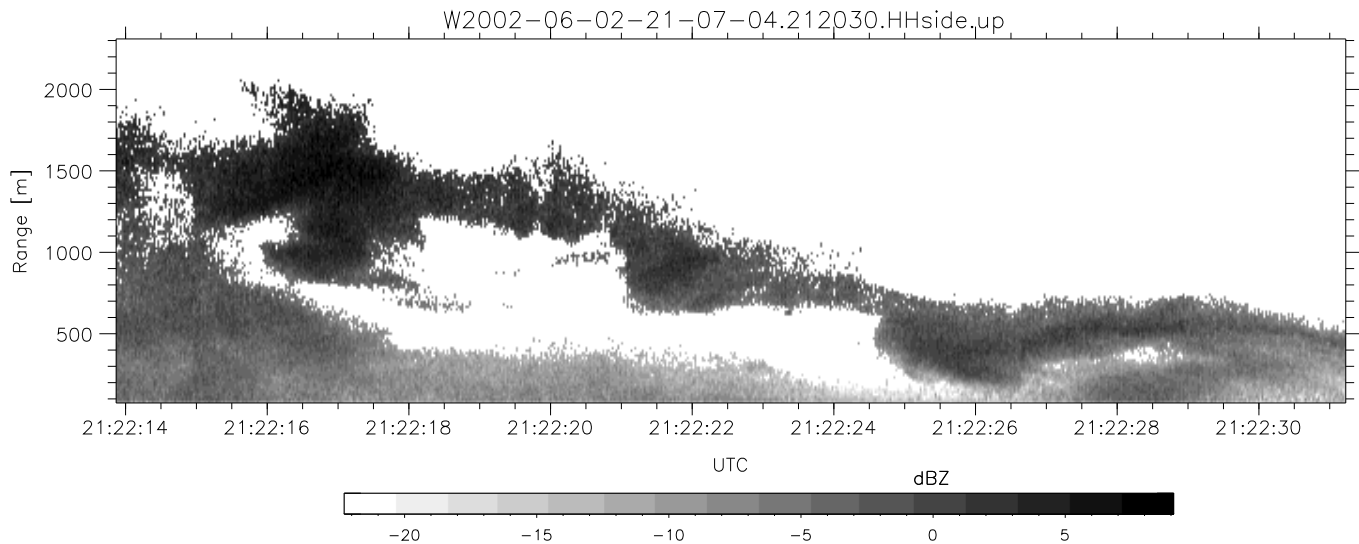
	Min	Max	Mean	Std	Varc%
hhN(dB)	-58.64	-46.14	-50.58	-53.66	49.3
vvN(dB)	-68.77	-66.16	-67.91	-79.07	7.6
hhL(dB)	-8.62	-4.52	-7.00	-15.68	13.6
vhL(dB)	-34.56	-30.25	-33.10	-41.51	14.4
ppN(m/s)	-6.71	3.73	0.16	1.98	
ppT(m/s)	-0.02	0.02	-0.00	0.01	
vh/hh(dB)	-NaN	-31.22	-45.84	-39.72	409.
hnjmp(dB)	-3.68	4.70	0.37	-5.48	26.0
vnjmp(dB)	-0.89	1.26	0.12	-11.47	6.9



IHOP 2002 (dual-antenna config, modes 1,3,4,7) Data (cal: 49.0,50.0)

W2002-06-02-21-07-04 - SPPMAG
 IRIG:1,UTC: 19:33:54.42 to 21:30:38.63, Dur: 7004s
 TimeLngth: 7004.21s, TimeInt: 128ms (7.8pps)
 TimeCor=-13.0s, DSPDif(mn,mx,min):28,20,739
 PPS(min,max,std): 15,42,7.86
 Prof: 3 to 54374, NumProf(t/r): 54371/5271
 ProcTime/Recs: 21:20:30-21:22:51/31626-36896
 MxACQtime: 17ms; DRate: 18.6KB/s; Flags: 0, 0, 0
 Pulse: 275ns, IFfilt: 5.0MHz; ppPol: HH
 TxPol: H, PRF: 20 kHz
 Range: Delay 75m, Spacing 15m, Gates 150
 Ave. Pulses: 348, Rng/Prof Aspect@90m/s: 1.3

	Min	Max	Mean	Std	Varc%
hhN(dB)	-58.64	-46.14	-50.58	-53.66	49.3
vvN(dB)	-68.77	-66.16	-67.91	-79.07	7.6
hhL(dB)	-8.62	-4.52	-7.00	-15.68	13.6
vhL(dB)	-34.56	-30.25	-33.10	-41.51	14.4
ppN(m/s)	-6.71	3.73	0.16	1.98	
ppT(m/s)	-0.02	0.02	-0.00	0.01	
vh/hh(dB)	-NaN	-31.22	-45.84	-39.72	409.
hnjmp(dB)	-3.68	4.70	0.37	-5.48	26.0
vnjmp(dB)	-0.89	1.26	0.12	-11.47	6.9



IHOP 2002 (dual-antenna config, modes 1,3,4,7) Data (cal: 49.0,50.0)

W2002-06-02-21-07-04 - SPPMAG
 IRIG:1,UTC: 19:33:54.42 to 21:30:38.63, Dur: 7004s
 TimeLngth: 7004.21s, TimeInt: 128ms (7.8pps)
 TimeCor=-13.0s, DSPDif(mn,mx,min):28,20,739
 PPS(min,max,std): 15,42,7.86
 Prof: 3 to 54374, NumProf(t/r): 54371/5271
 ProcTime/Recs: 21:20:30-21:22:51/31626-36896
 MxACQtime: 17ms; DRate: 18.6KB/s; Flags: 0, 0, 0
 Pulse: 275ns, IFfilt: 5.0MHz; ppPol: HH
 TxPol: H, PRF: 20 kHz
 Range: Delay 75m, Spacing 15m, Gates 150
 Ave. Pulses: 348, Rng/Prof Aspect@90m/s: 1.3

	Min	Max	Mean	Std	Varc%
hhN(dB)	-58.64	-46.14	-50.58	-53.66	49.3
vvN(dB)	-68.77	-66.16	-67.91	-79.07	7.6
hhL(dB)	-8.62	-4.52	-7.00	-15.68	13.6
vhL(dB)	-34.56	-30.25	-33.10	-41.51	14.4
ppN(m/s)	-6.71	3.73	0.16	1.98	
ppT(m/s)	-0.02	0.02	-0.00	0.01	
vh/hh(dB)	-NaN	-31.22	-45.84	-39.72	409.
hnjmp(dB)	-3.68	4.70	0.37	-5.48	26.0
vnjmp(dB)	-0.89	1.26	0.12	-11.47	6.9