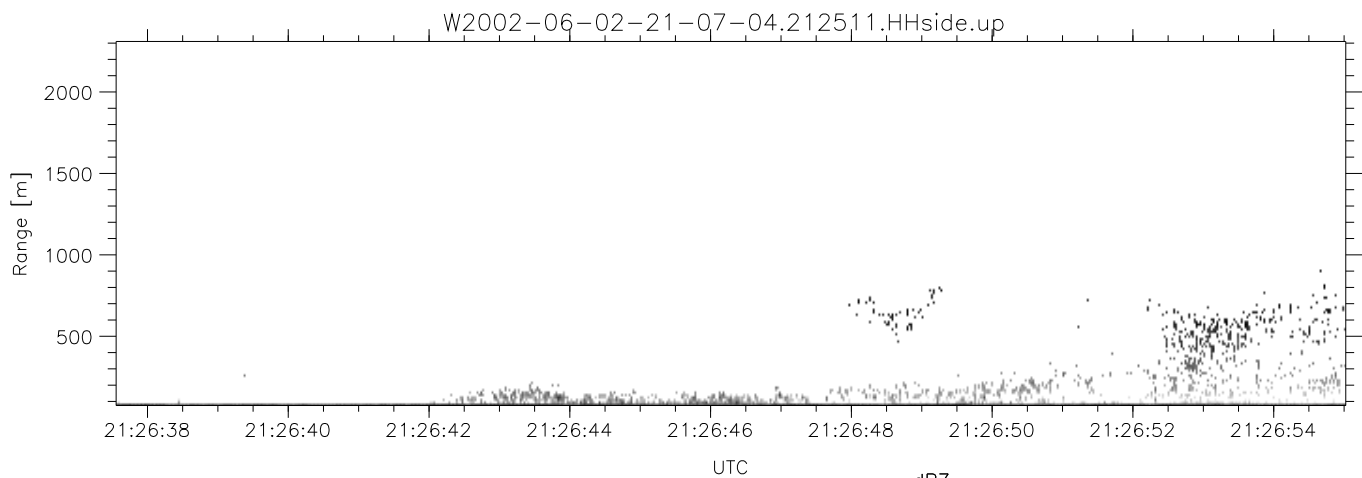
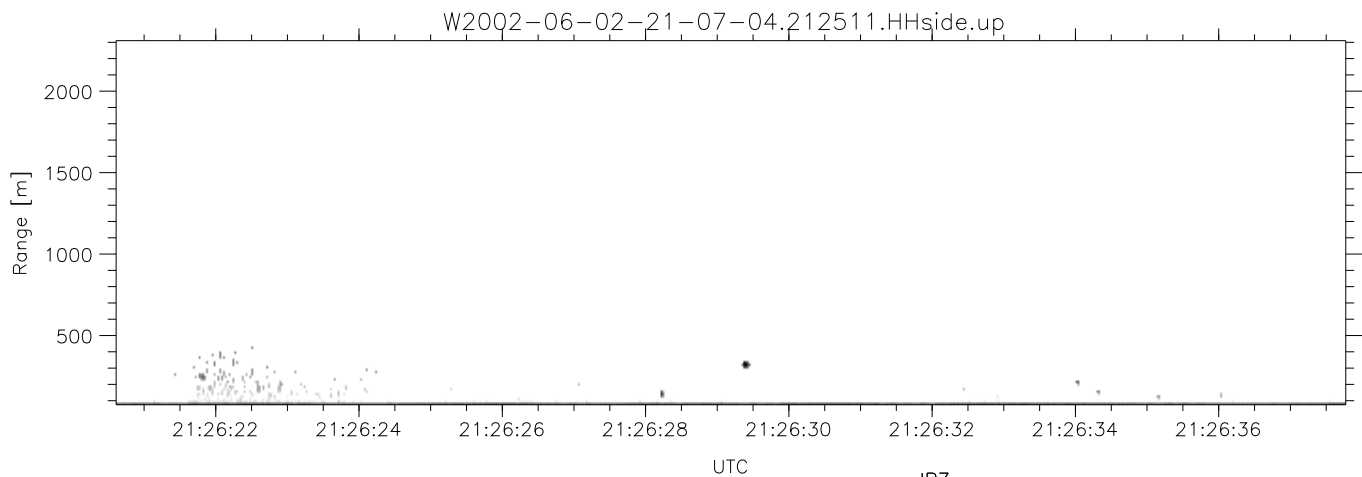
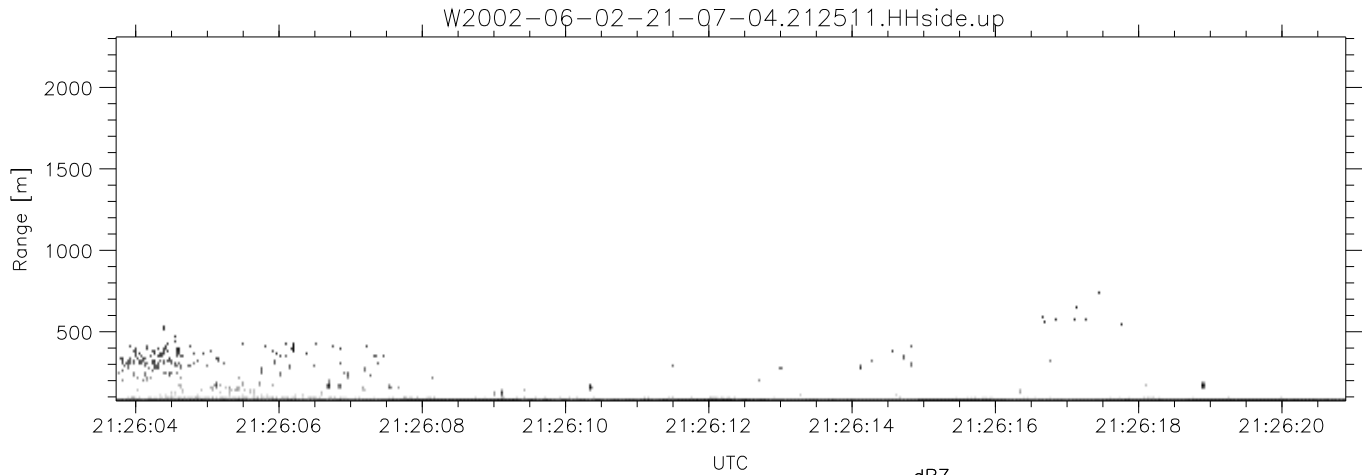


IHOP 2002 (dual-antenna config, modes 1,3,4,7) Data (cal: 49.0,50.0)

W2002-06-02-21-07-04 - SPPMAG
 IRIG:1,UTC: 19:33:54.42 to 21:30:38.63, Dur: 7004s
 TimeLngth: 7004.21s, TimeInt: 128ms (7.8pps)
 TimeCor=-13.0s, DSPDif(mn,mx,min):28,20,703
 PPS(min,max,std): 14,42,8.07
 Prof: 3 to 54374, NumProf(t/r): 54371/5271
 ProcTime/Recs: 21:25:11-21:27:32/42168-47438
 MxACQtime: 17ms; DRate: 18.6KB/s; Flags: 0, 0, 0
 Pulse: 275ns, IFfilt: 5.0MHz; ppPol: HH
 TxPol: H, PRF: 20 kHz
 Range: Delay 75m, Spacing 15m, Gates 150
 Ave. Pulses: 348, Rng/Prof Aspect@90m/s: 1.3

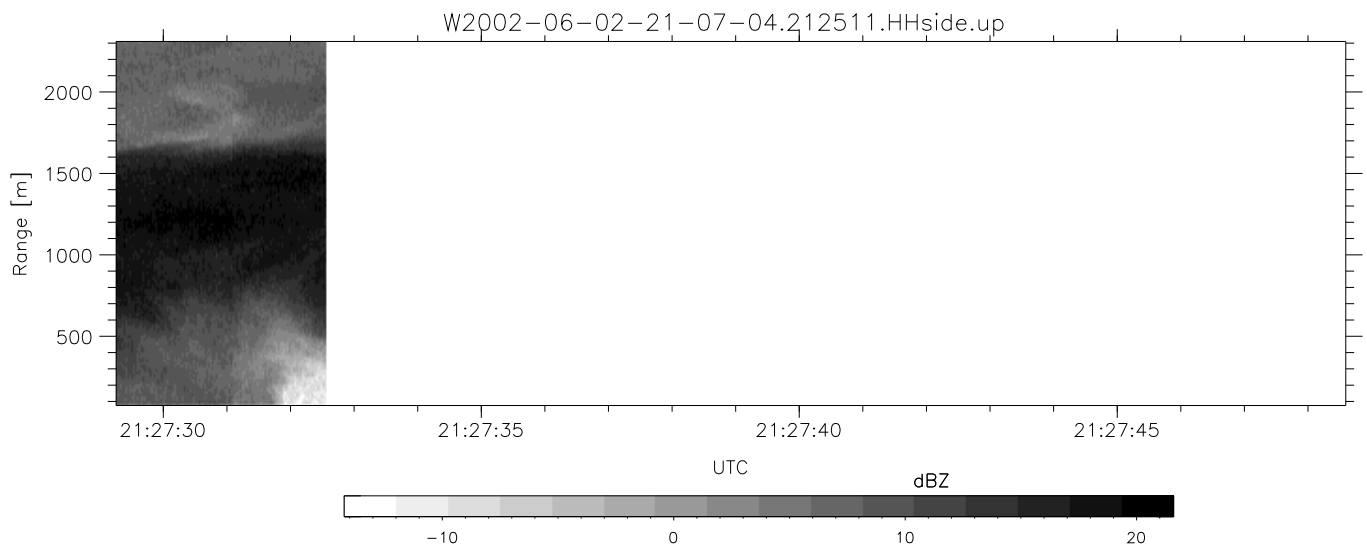
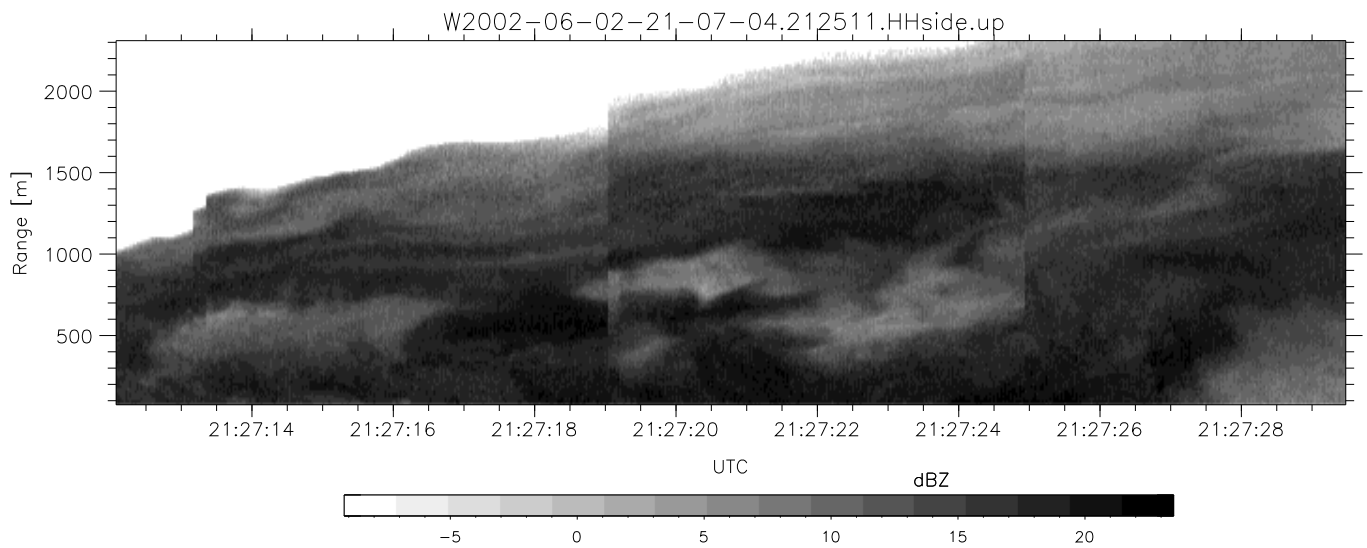
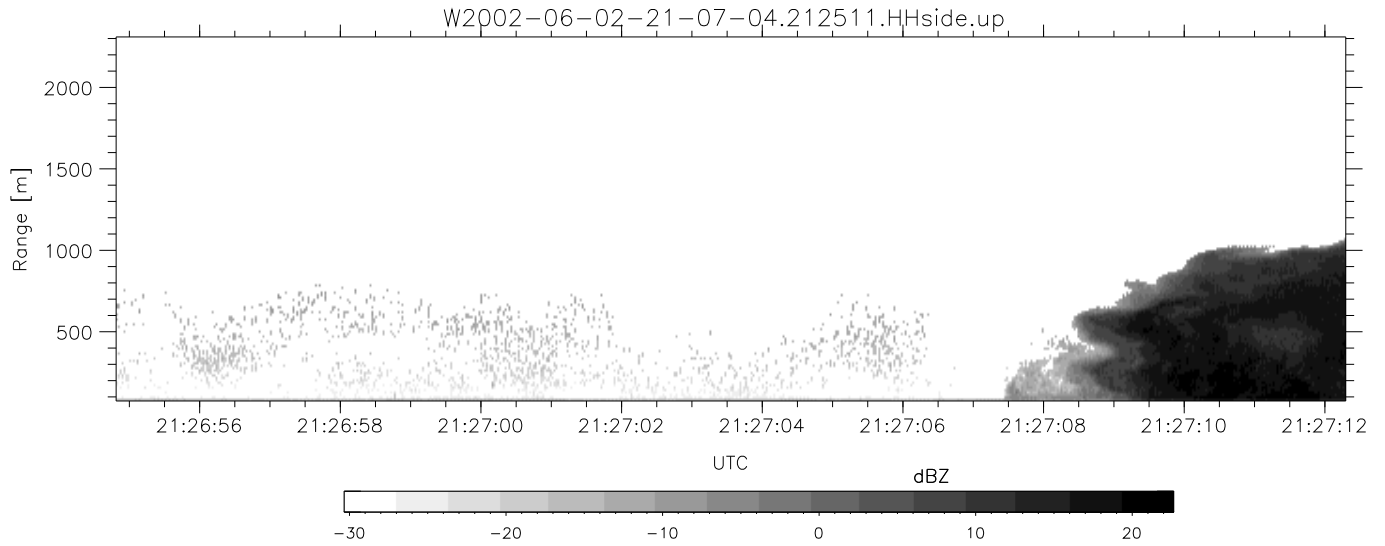
	Min	Max	Mean	Std	Varc%
hhN(dB)	-62.86	-47.53	-52.23	-55.55	46.6
vvN(dB)	-68.82	-60.29	-67.75	-73.03	29.6
hhL(dB)	-6.72	-1.86	-4.48	-11.93	18.0
vhL(dB)	-33.30	-27.90	-30.74	-38.27	17.6
ppN(m/s)	-10.40	4.20	-1.15	2.88	
ppT(m/s)	-0.02	0.02	-0.00	0.00	
vh/hh(dB)	-NaN	-27.81	-NaN	-42.95	-174
hnjmp(dB)	-3.93	4.36	0.30	-5.93	23.8
vnjmp(dB)	-3.78	4.16	0.16	-8.71	13.0



IHOP 2002 (dual-antenna config, modes 1,3,4,7) Data (cal: 49.0,50.0)

W2002-06-02-21-07-04 - SPPMAG
 IRIG:1,UTC: 19:33:54.42 to 21:30:38.63, Dur: 7004s
 TimeLngth: 7004.21s, TimeInt: 128ms (7.8pps)
 TimeCor=-13.0s, DSPDif(mn,mx,min):28,20,703
 PPS(min,max,std): 14,42,8.07
 Prof: 3 to 54374, NumProf(t/r): 54371/5271
 ProcTime/Recs: 21:25:11-21:27:32/42168-47438
 MxACQtime: 17ms; DRate: 18.6KB/s; Flags: 0, 0, 0
 Pulse: 275ns, IFfilt: 5.0MHz; ppPol: HH
 TxPol: H, PRF: 20 kHz
 Range: Delay 75m, Spacing 15m, Gates 150
 Ave. Pulses: 348, Rng/Prof Aspect@90m/s: 1.3

	Min	Max	Mean	Std	Varc%
hhN(dB)	-62.86	-47.53	-52.23	-55.55	46.6
vvN(dB)	-68.82	-60.29	-67.75	-73.03	29.6
hhL(dB)	-6.72	-1.86	-4.48	-11.93	18.0
vhL(dB)	-33.30	-27.90	-30.74	-38.27	17.6
ppN(m/s)	-10.40	4.20	-1.15	2.88	
ppT(m/s)	-0.02	0.02	-0.00	0.00	
vh/hh(dB)	-NaN	-27.81	-NaN	-42.95	-174
hnjmp(dB)	-3.93	4.36	0.30	-5.93	23.8
vnjmp(dB)	-3.78	4.16	0.16	-8.71	13.0



IHOP 2002 (dual-antenna config, modes 1,3,4,7) Data (cal: 49.0,50.0)

W2002-06-02-21-07-04 - SPPMAG
 IRIG:1,UTC: 19:33:54.42 to 21:30:38.63, Dur: 7004s
 TimeLngth: 7004.21s, TimeInt: 128ms (7.8pps)
 TimeCor=-13.0s, DSPDif(mn,mx,min):28,20,703
 PPS(min,max,std): 14,42,8.07
 Prof: 3 to 54374, NumProf(t/r): 54371/5271
 ProcTime/Recs: 21:25:11-21:27:32/42168-47438
 MxACQtime: 17ms; DRate: 18.6KB/s; Flags: 0, 0, 0
 Pulse: 275ns, IFfilt: 5.0MHz; ppPol: HH
 TxPol: H, PRF: 20 kHz
 Range: Delay 75m, Spacing 15m, Gates 150
 Ave. Pulses: 348, Rng/Prof Aspect@90m/s: 1.3

	Min	Max	Mean	Std	Varc%
hhN(dB)	-62.86	-47.53	-52.23	-55.55	46.6
vvN(dB)	-68.82	-60.29	-67.75	-73.03	29.6
hhL(dB)	-6.72	-1.86	-4.48	-11.93	18.0
vhL(dB)	-33.30	-27.90	-30.74	-38.27	17.6
ppN(m/s)	-10.40	4.20	-1.15	2.88	
ppT(m/s)	-0.02	0.02	-0.00	0.00	
vh/hh(dB)	-NaN	-27.81	-NaN	-42.95	-174
hnjmp(dB)	-3.93	4.36	0.30	-5.93	23.8
vnjmp(dB)	-3.78	4.16	0.16	-8.71	13.0