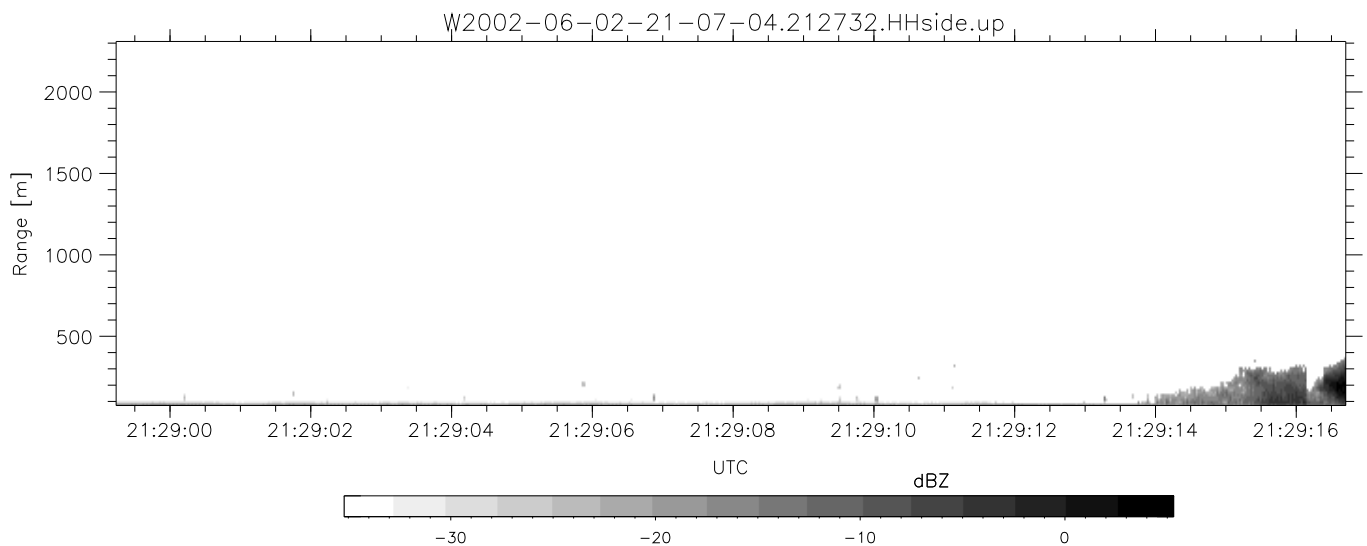
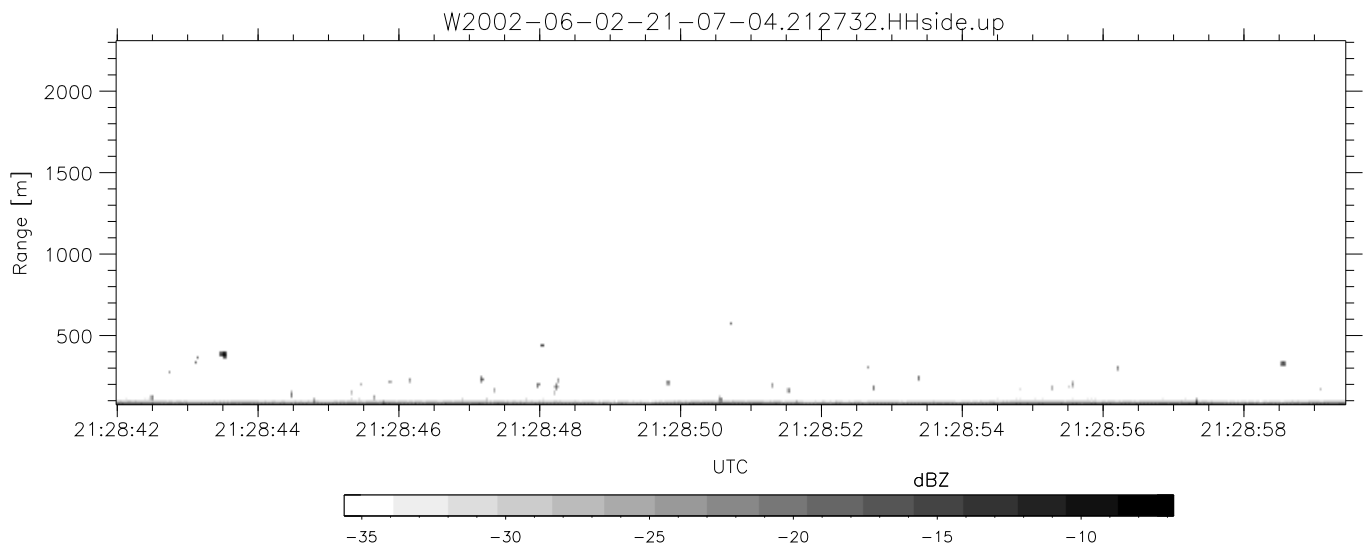
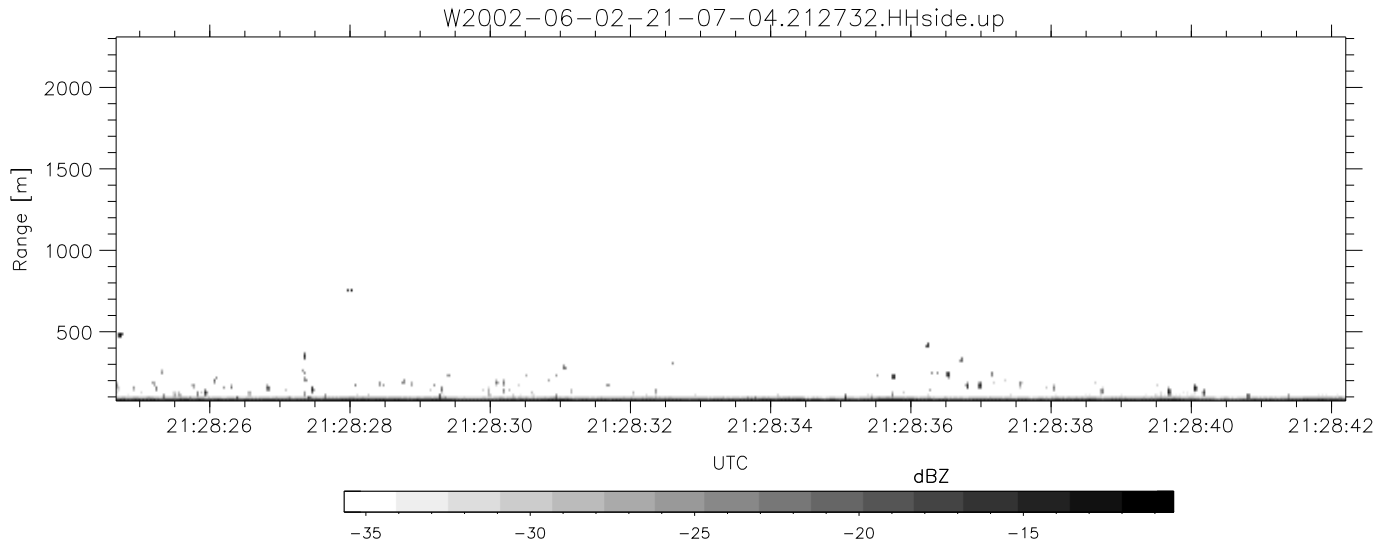


IHOP 2002 (dual-antenna config, modes 1,3,4,7) Data (cal: 49.0,50.0)

W2002-06-02-21-07-04 - SPPMAG  
 IRIG:1,UTC: 19:33:54.42 to 21:30:38.63, Dur: 7004s  
 TimeLngth: 7004.21s, TimeInt: 128ms (7.8pps)  
 TimeCor=-13.0s, DSPDif(mn,mx,min):24,20,723  
 PPS(min,max,std): 11,42,8.51  
 Prof: 3 to 54374, NumProf(t/r): 54371/5271  
 ProcTime/Recs: 21:27:32-21:29:53/47439-52709  
 MxACQtime: 17ms; DRate: 18.6KB/s; Flags: 0, 0, 0  
 Pulse: 275ns, IFfilt: 5.0MHz; ppPol: HH  
 TxPol: H, PRF: 20 kHz  
 Range: Delay 75m, Spacing 15m, Gates 150  
 Ave. Pulses: 348, Rng/Prof Aspect@90m/s: 1.3

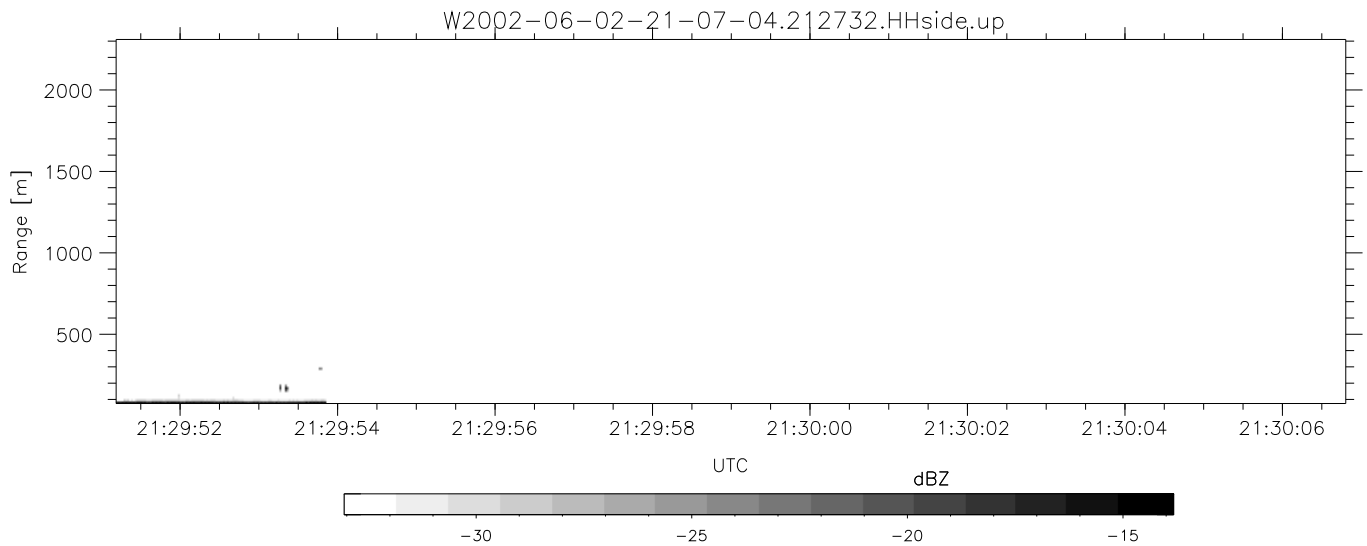
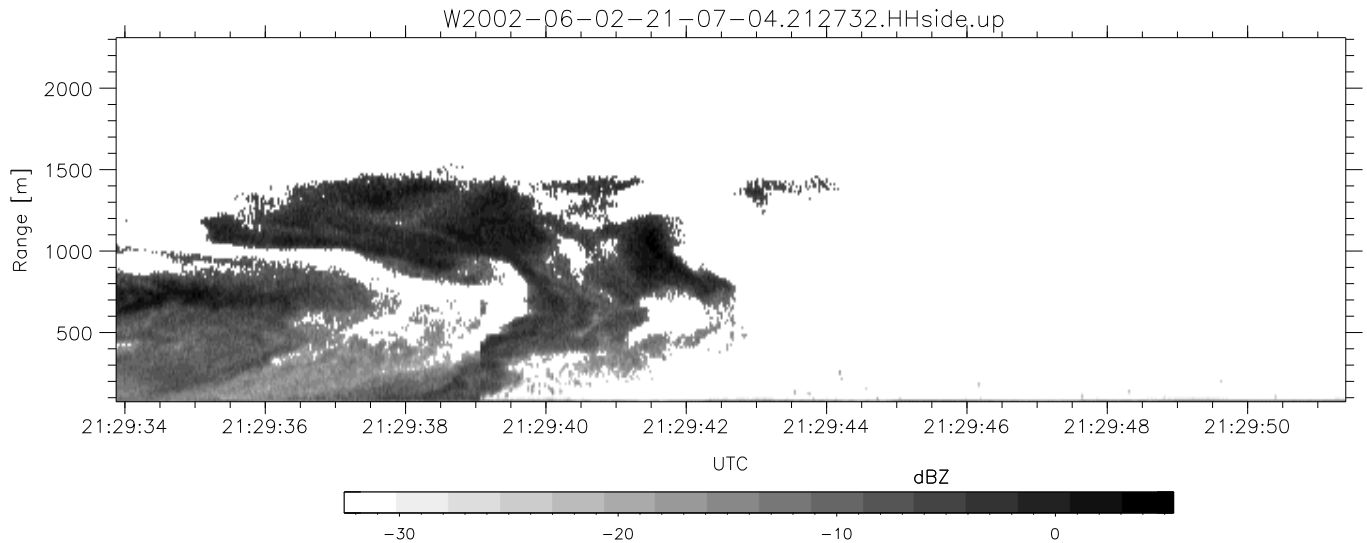
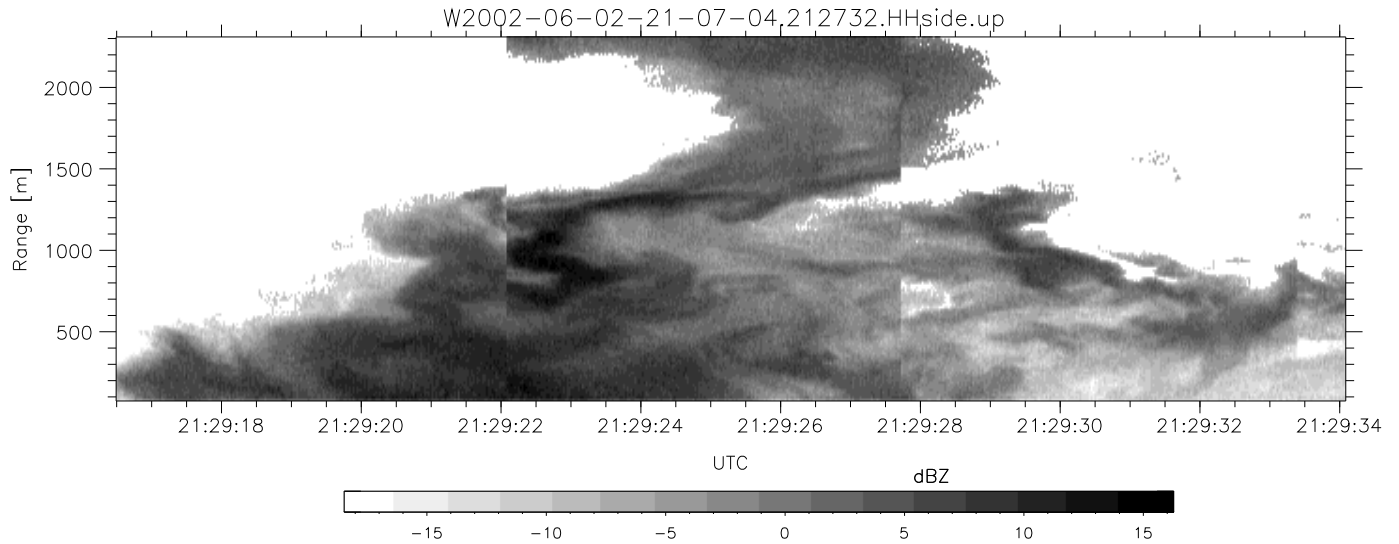
|            | Min    | Max    | Mean   | Std    | Varc% |
|------------|--------|--------|--------|--------|-------|
| hhN (dB)   | -64.82 | -51.71 | -58.33 | -59.87 | 70.3  |
| vvN (dB)   | -68.93 | -67.39 | -68.11 | -81.06 | 5.1   |
| hhL (dB)   | -12.26 | -2.26  | -5.77  | -10.23 | 35.8  |
| vhL (dB)   | -41.60 | -28.33 | -31.22 | -36.45 | 30.0  |
| ppN (m/s)  | -15.74 | 15.71  | 2.69   | 3.59   |       |
| ppT (m/s)  | -0.02  | 0.02   | -0.00  | 0.01   |       |
| vh/hh (dB) | -NaN   | -33.46 | -48.18 | -41.90 | 424.  |
| hnjmp (dB) | -3.26  | 2.99   | -0.08  | -8.17  | 15.5  |
| vnjmp (dB) | -1.09  | 0.87   | -0.12  | -11.82 | 6.8   |



IHOP 2002 (dual-antenna config, modes 1,3,4,7) Data (cal: 49.0,50.0)

W2002-06-02-21-07-04 - SPPMAG  
 IRIG:1,UTC: 19:33:54.42 to 21:30:38.63, Dur: 7004s  
 TimeLngth: 7004.21s, TimeInt: 128ms (7.8pps)  
 TimeCor=-13.0s, DSPDif(mn,mx,min):24,20,723  
 PPS(min,max,std): 11,42,8.51  
 Prof: 3 to 54374, NumProf(t/r): 54371/5271  
 ProcTime/Recs: 21:27:32-21:29:53/47439-52709  
 MxACQtime: 17ms; DRate: 18.6KB/s; Flags: 0, 0, 0  
 Pulse: 275ns, IFfilt: 5.0MHz; ppPol: HH  
 TxPol: H, PRF: 20 kHz  
 Range: Delay 75m, Spacing 15m, Gates 150  
 Ave. Pulses: 348, Rng/Prof Aspect@90m/s: 1.3

|            | Min    | Max    | Mean   | Std    | Varc% |
|------------|--------|--------|--------|--------|-------|
| hhN (dB)   | -64.82 | -51.71 | -58.33 | -59.87 | 70.3  |
| vvN (dB)   | -68.93 | -67.39 | -68.11 | -81.06 | 5.1   |
| hhL (dB)   | -12.26 | -2.26  | -5.77  | -10.23 | 35.8  |
| vhL (dB)   | -41.60 | -28.33 | -31.22 | -36.45 | 30.0  |
| ppN (m/s)  | -15.74 | 15.71  | 2.69   | 3.59   |       |
| ppT (m/s)  | -0.02  | 0.02   | -0.00  | 0.01   |       |
| vh/hh (dB) | -NaN   | -33.46 | -48.18 | -41.90 | 424.  |
| hnjmp (dB) | -3.26  | 2.99   | -0.08  | -8.17  | 15.5  |
| vnjmp (dB) | -1.09  | 0.87   | -0.12  | -11.82 | 6.8   |



IHOP 2002 (dual-antenna config, modes 1,3,4,7) Data (cal: 49.0,50.0)

W2002-06-02-21-07-04 - SPPMAG  
 IRIG:1,UTC: 19:33:54.42 to 21:30:38.63, Dur: 7004s  
 TimeLngth: 7004.21s, TimeInt: 128ms (7.8pps)  
 TimeCor=-13.0s, DSPDif(mn,mx,min):24,20,723  
 PPS(min,max,std): 11,42,8.51  
 Prof: 3 to 54374, NumProf(t/r): 54371/5271  
 ProcTime/Recs: 21:27:32-21:29:53/47439-52709  
 MxACQtime: 17ms; DRate: 18.6KB/s; Flags: 0, 0, 0  
 Pulse: 275ns, IFfilt: 5.0MHz; ppPol: HH  
 TxPol: H, PRF: 20 kHz  
 Range: Delay 75m, Spacing 15m, Gates 150  
 Ave. Pulses: 348, Rng/Prof Aspect@90m/s: 1.3

|           | Min    | Max    | Mean   | Std    | Varc% |
|-----------|--------|--------|--------|--------|-------|
| hhN(dB)   | -64.82 | -51.71 | -58.33 | -59.87 | 70.3  |
| vvN(dB)   | -68.93 | -67.39 | -68.11 | -81.06 | 5.1   |
| hhL(dB)   | -12.26 | -2.26  | -5.77  | -10.23 | 35.8  |
| vhL(dB)   | -41.60 | -28.33 | -31.22 | -36.45 | 30.0  |
| ppN(m/s)  | -15.74 | 15.71  | 2.69   | 3.59   |       |
| ppT(m/s)  | -0.02  | 0.02   | -0.00  | 0.01   |       |
| vh/hh(dB) | -NaN   | -33.46 | -48.18 | -41.90 | 424.  |
| hnjmp(dB) | -3.26  | 2.99   | -0.08  | -8.17  | 15.5  |
| vnjmp(dB) | -1.09  | 0.87   | -0.12  | -11.82 | 6.8   |