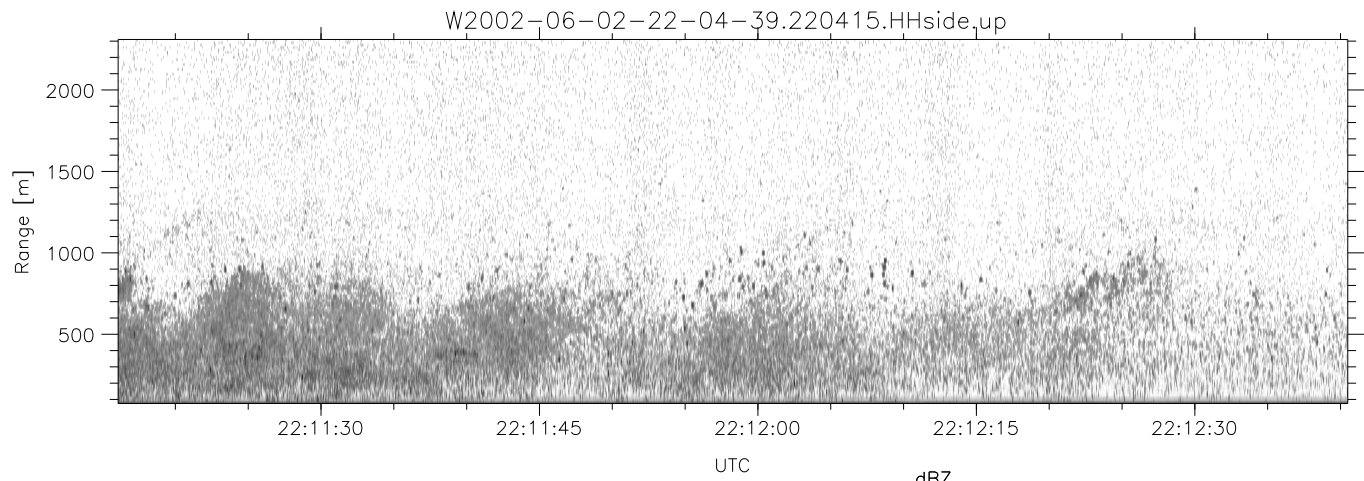
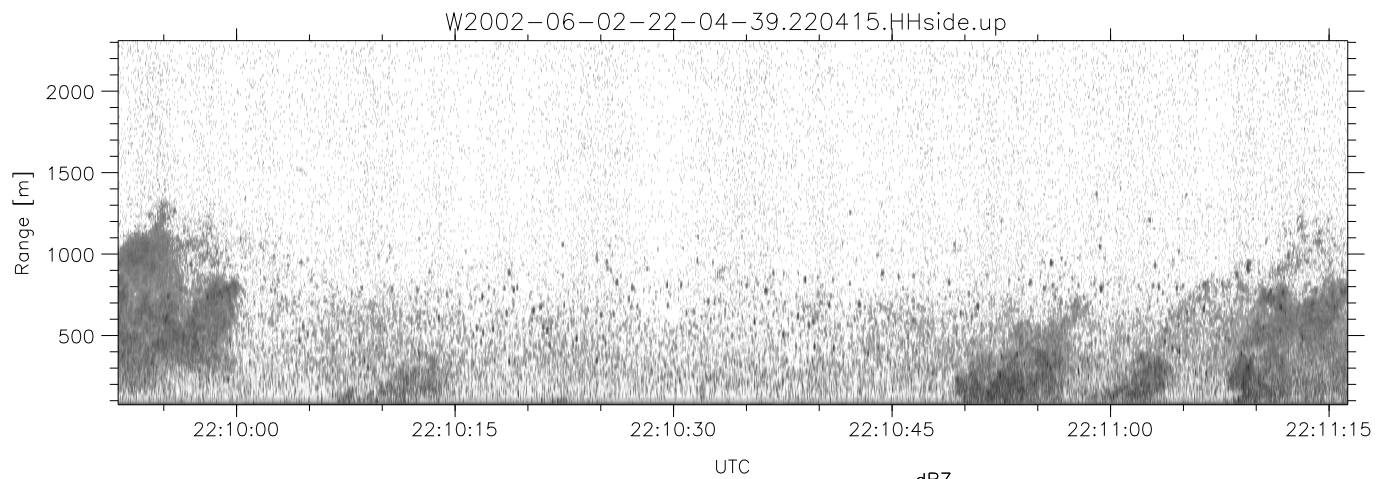
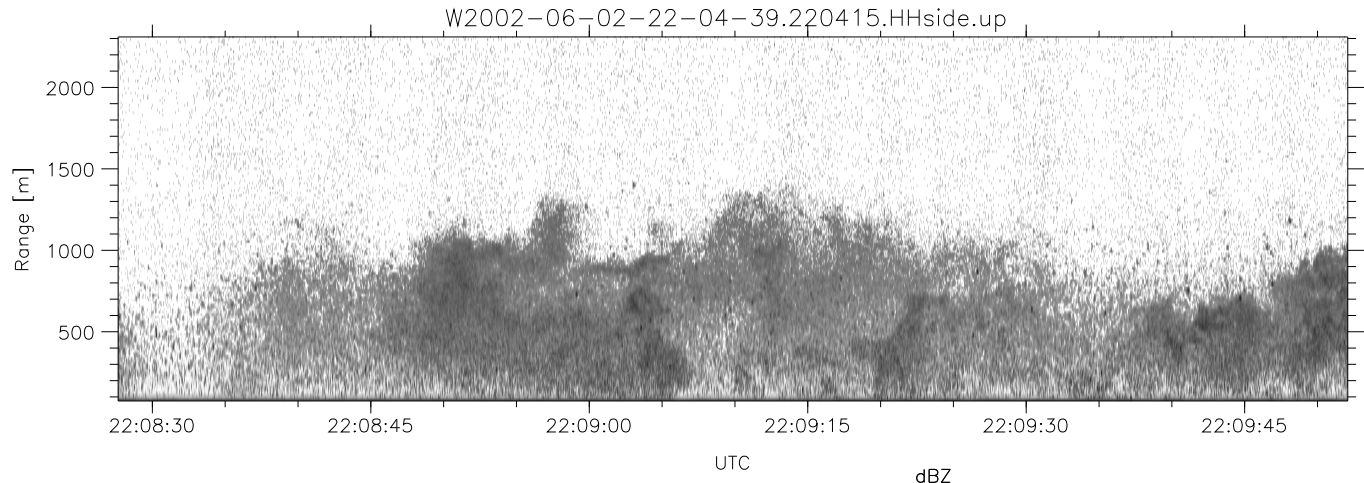


IHOP 2002 (dual-antenna config, modes 1,3,4,7) Data (cal: 49.0,50.0)

W2002-06-02-22-04-39 - SPPMAG
 IRIG:1,UTC: 22:04:15.24 to 22:19:48.30, Dur: 933s
 TimeLngth: 933.06s, TimeInt: 24ms (41.1pps)
 TimeCor=-13.0s, DSPDif(mn,mx,min):28,20,401
 PPS(min,max,std): 26,42,2.31
 Prof: 207 to 38513, NumProf(t/r): 38306/30875
 ProcTime/Recs: 22:04:15-22:16:47/0-30874
 MxACQtime: 17ms; DRate: 98.3KB/s; Flags: 0, 0, 0
 Pulse: 275ns, IFfilt: 5.0MHz; ppPol: HH
 TxPol: H, PRF: 20 kHz
 Range: Delay 75m, Spacing 15m, Gates 150
 Ave. Pulses: 348, Rng/Prof Aspect@90m/s: 6.8

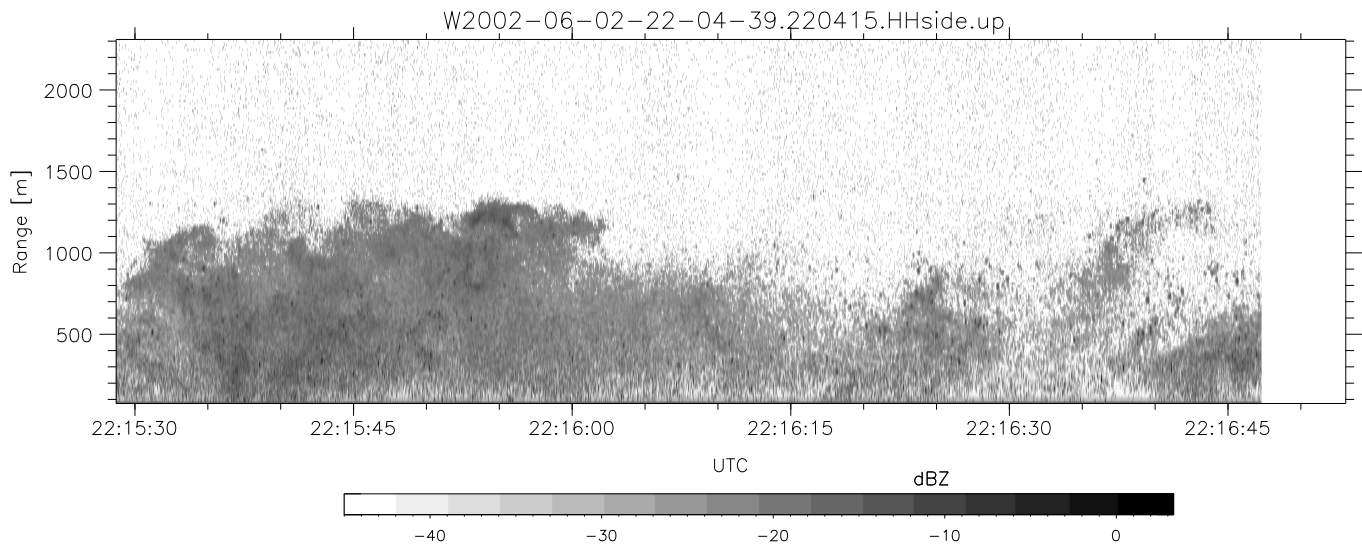
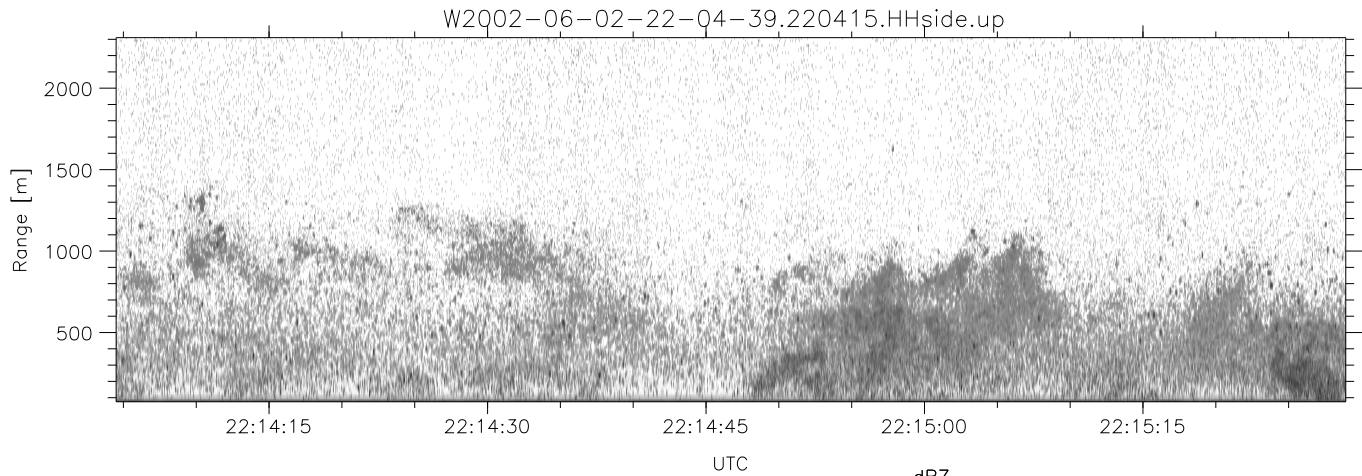
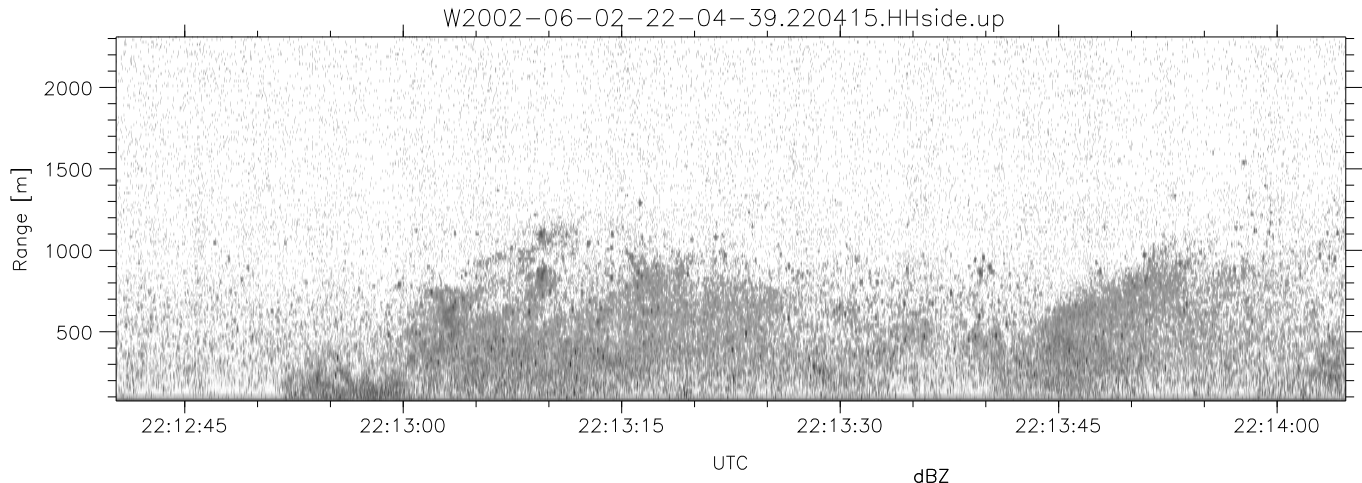
	Min	Max	Mean	Std	Varc%
hhN(dB)	-66.31	-64.38	-65.29	-78.13	5.2
vvN(dB)	-69.46	-67.61	-68.56	-81.43	5.2
hhL(dB)	-13.36	-5.66	-8.27	-16.32	15.7
vhL(dB)	-40.66	-30.52	-35.01	-42.16	19.2
ppN(m/s)	-15.80	15.80	0.10	9.12	
ppT(m/s)	-0.02	0.02	-0.00	0.01	
vh/hh(dB)	-NaN	-33.82	-41.60	-40.54	127.
hnjmp(dB)	-1.09	1.55	0.16	-11.57	6.7
vnjmp(dB)	-1.37	1.27	0.13	-11.56	6.8



IHOP 2002 (dual-antenna config, modes 1,3,4,7) Data (cal: 49.0,50.0)

W2002-06-02-22-04-39 - SPPMAG
 IRIG:1,UTC: 22:04:15.24 to 22:19:48.30, Dur: 933s
 TimeLngth: 933.06s, TimeInt: 24ms (41.1pps)
 TimeCor=-13.0s, DSPDif(mn,mx,min):28,20,401
 PPS(min,max,std): 26,42,2.31
 Prof: 207 to 38513, NumProf(t/r): 38306/30875
 ProcTime/Recs: 22:04:15-22:16:47/0-30874
 MxACQtime: 17ms; DRate: 98.3KB/s; Flags: 0, 0, 0
 Pulse: 275ns, IFfilt: 5.0MHz; ppPol: HH
 TxPol: H, PRF: 20 kHz
 Range: Delay 75m, Spacing 15m, Gates 150
 Ave. Pulses: 348, Rng/Prof Aspect@90m/s: 6.8

	Min	Max	Mean	Std	Varc%
hhN(dB)	-66.31	-64.38	-65.29	-78.13	5.2
vvN(dB)	-69.46	-67.61	-68.56	-81.43	5.2
hhL(dB)	-13.36	-5.66	-8.27	-16.32	15.7
vhL(dB)	-40.66	-30.52	-35.01	-42.16	19.2
ppN(m/s)	-15.80	15.80	0.10	9.12	
ppT(m/s)	-0.02	0.02	-0.00	0.01	
vh/hh(dB)	-NaN	-33.82	-41.60	-40.54	127.
hn_jmp(dB)	-1.09	1.55	0.16	-11.57	6.7
vn_jmp(dB)	-1.37	1.27	0.13	-11.56	6.8



IHOP 2002 (dual-antenna config, modes 1,3,4,7) Data (cal: 49.0,50.0)

W2002-06-02-22-04-39 - SPPMAG
 IRIG:1,UTC: 22:04:15.24 to 22:19:48.30, Dur: 933s
 TimeLngth: 933.06s, TimeInt: 24ms (41.1pps)
 TimeCor=-13.0s, DSPDif(mn,mx,min):28,20,401
 PPS(min,max,std): 26,42,2.31
 Prof: 207 to 38513, NumProf(t/r): 38306/30875
 ProcTime/Recs: 22:04:15-22:16:47/0-30874
 MxACQtime: 17ms; DRate: 98.3KB/s; Flags: 0, 0, 0
 Pulse: 275ns, IFfilt: 5.0MHz; ppPol: HH
 TxPol: H, PRF: 20 kHz
 Range: Delay 75m, Spacing 15m, Gates 150
 Ave. Pulses: 348, Rng/Prof Aspect@90m/s: 6.8

	Min	Max	Mean	Std	Varc%
hhN(dB)	-66.31	-64.38	-65.29	-78.13	5.2
vvN(dB)	-69.46	-67.61	-68.56	-81.43	5.2
hhL(dB)	-13.36	-5.66	-8.27	-16.32	15.7
vhL(dB)	-40.66	-30.52	-35.01	-42.16	19.2
ppN(m/s)	-15.80	15.80	0.10	9.12	
ppT(m/s)	-0.02	0.02	-0.00	0.01	
vh/hh(dB)	-NaN	-33.82	-41.60	-40.54	127.
hnjmp(dB)	-1.09	1.55	0.16	-11.57	6.7
vnjmp(dB)	-1.37	1.27	0.13	-11.56	6.8