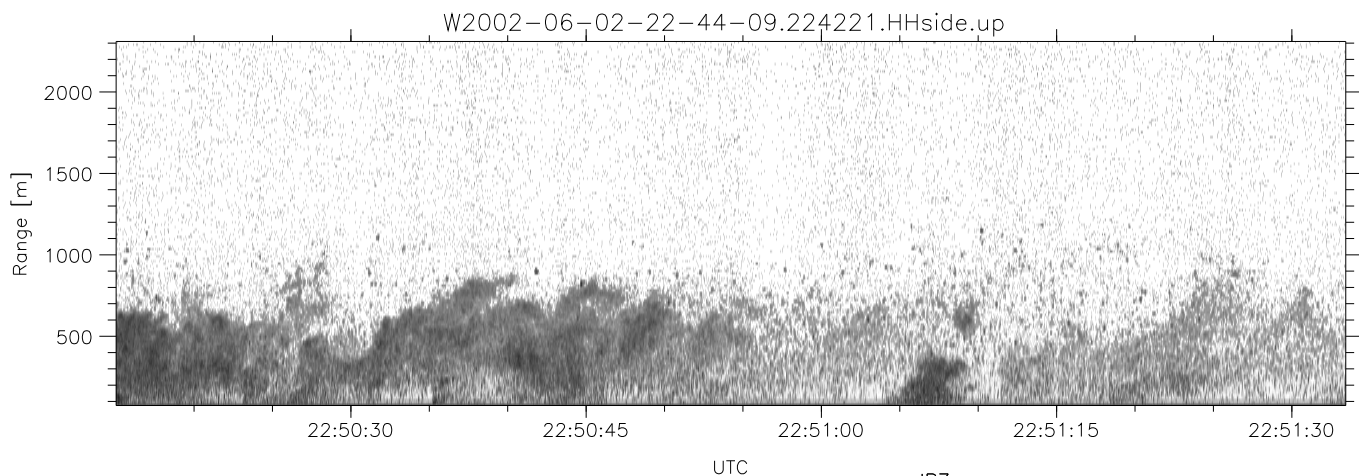
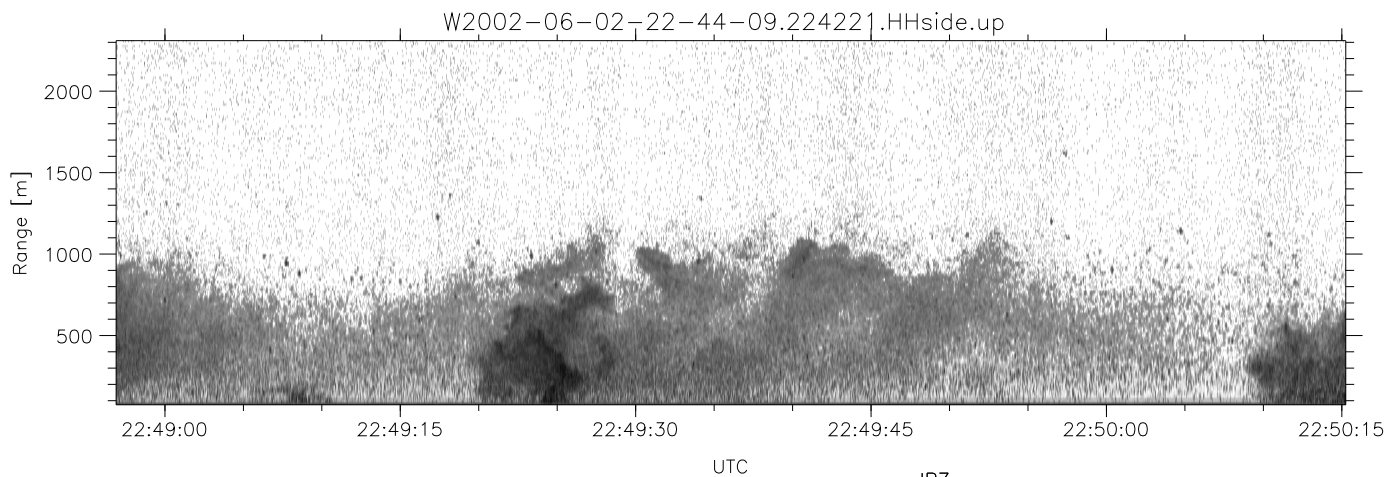
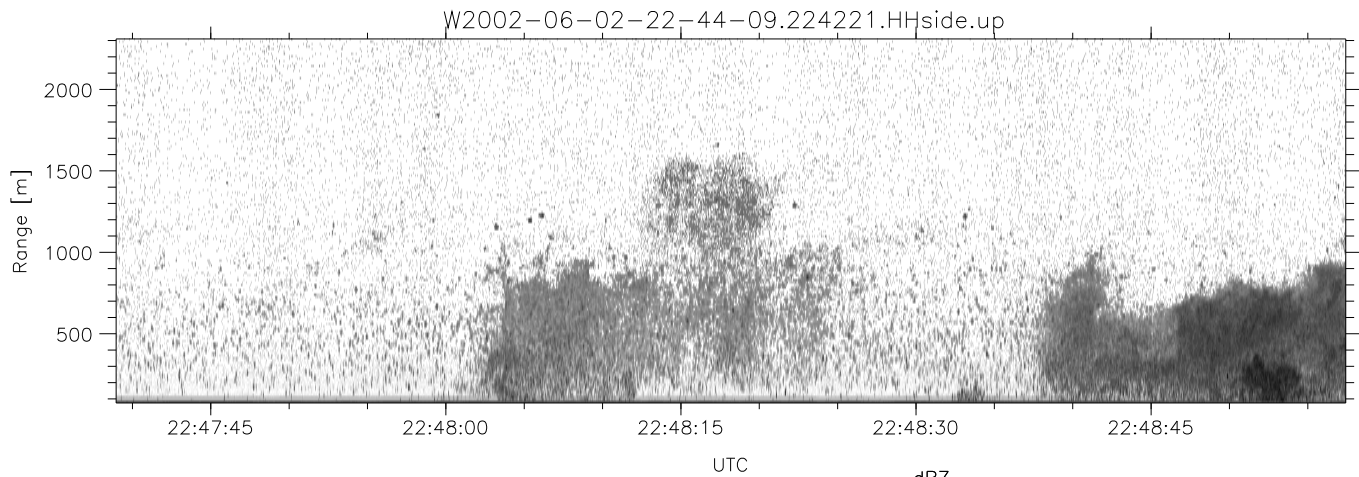


IHOP 2002 (dual-antenna config, modes 1,3,4,7) Data (cal: 49.0,50.0)

W2002-06-02-22-44-09 - SPPMAG
 IRIG:1,UTC: 22:42:21.61 to 23:01:28.79, Dur: 1147s
 TimeLngth: 1147.19s, TimeInt: 27ms (36.4pps)
 TimeCor=-13.0s, DSPDif(mn,mx,min):35,20,84052
 PPS(min,max,std): 0.42,13.12
 Prof: 3 to 41726, NumProf(t/r): 41723/27110
 ProcTime/Recs: 22:42:21-22:55:15/0-27109
 MxACQtime: 17ms; DRate: 87.1KB/s; Flags: 0, 0, 0
 Pulse: 275ns, IFfilt: 5.0MHz; ppPol: HH
 TxPol: H, PRF: 20 kHz
 Range: Delay 75m, Spacing 15m, Gates 150
 Ave. Pulses: 348, Rng/Prof Aspect@90m/s: 6.1

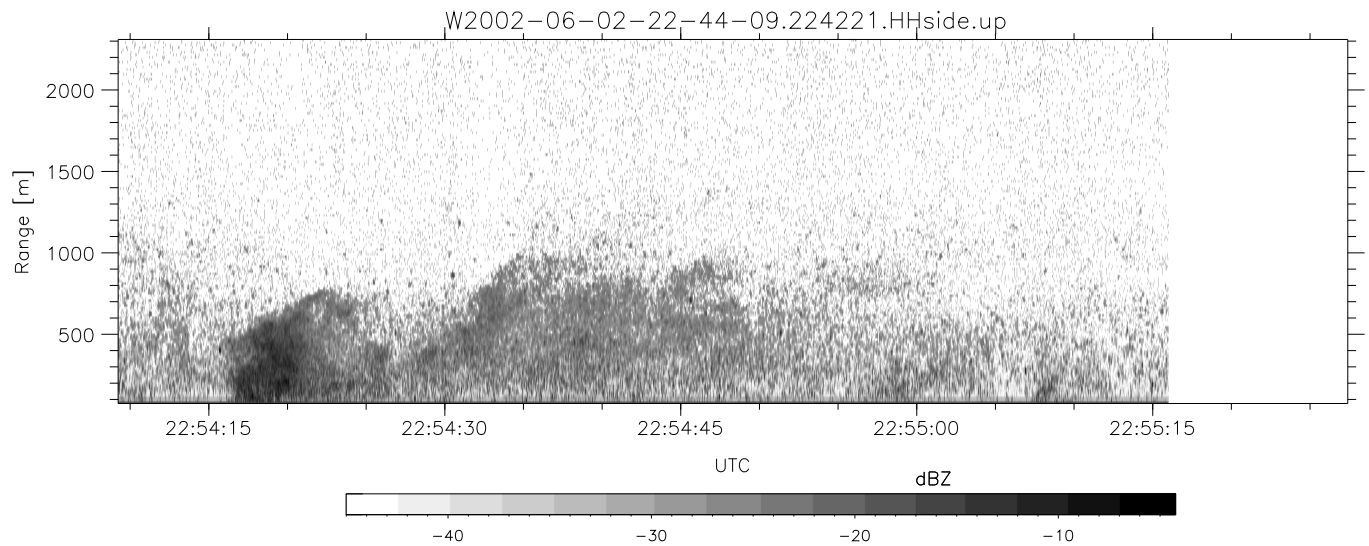
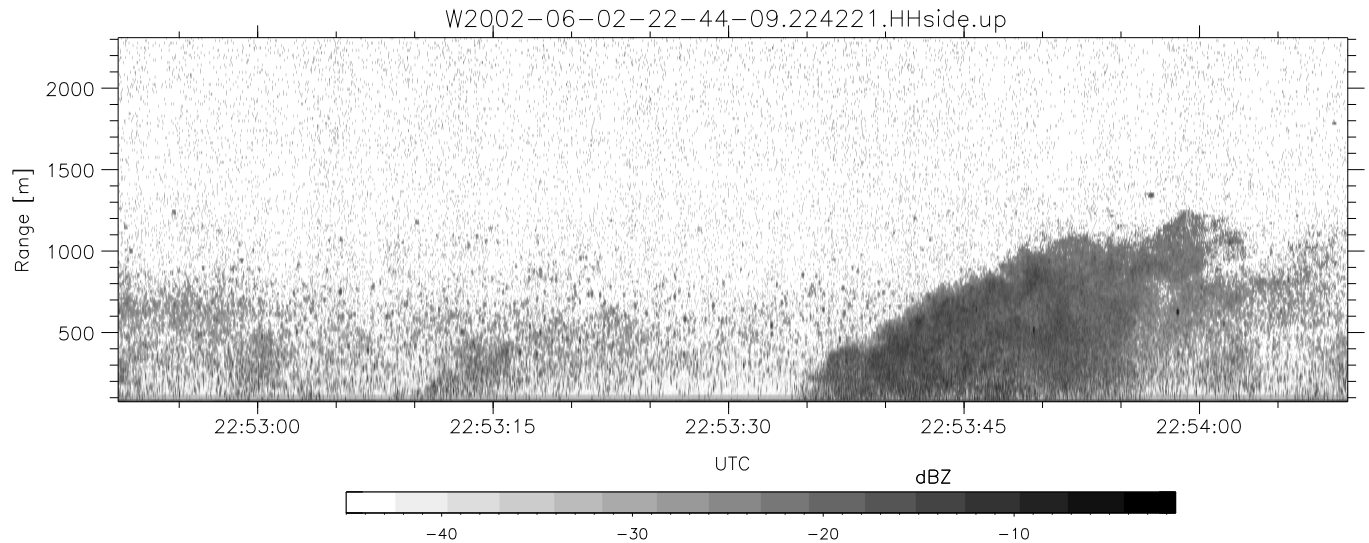
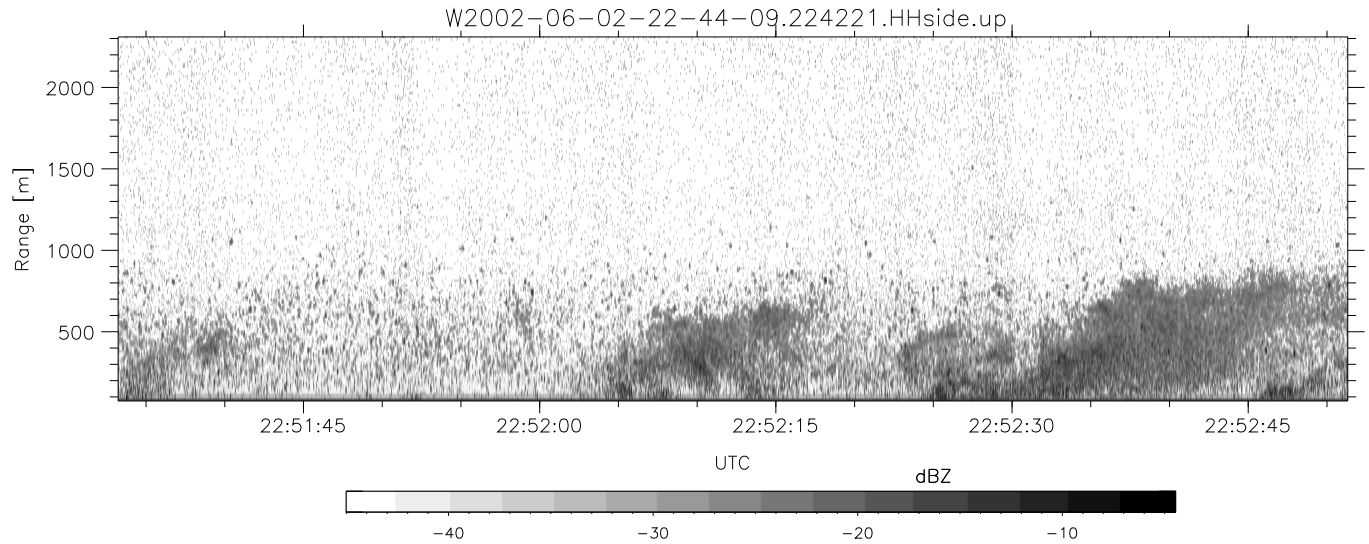
	Min	Max	Mean	Std	Varc%
hhN(dB)	-70.63	-64.93	-65.72	-78.46	5.3
vvN(dB)	-72.93	-68.10	-68.97	-81.64	5.4
hhL(dB)	-70.74	-7.22	-9.43	-17.64	15.1
vhL(dB)	-73.06	-33.33	-38.04	-44.41	23.0
ppN(m/s)	-15.80	15.80	0.11	9.03	
ppT(m/s)	-0.02	0.02	-0.00	0.00	
vh/hh(dB)	-NaN	-34.12	-41.42	-40.69	118.
hnjmp(dB)	-0.97	4.56	0.16	-11.42	7.0
vnjmp(dB)	-0.98	3.28	0.14	-11.46	6.9



IHOP 2002 (dual-antenna config, modes 1,3,4,7) Data (cal: 49.0,50.0)

W2002-06-02-22-44-09 - SPPMAG
 IRIG:1,UTC: 22:42:21.61 to 23:01:28.79, Dur: 1147s
 TimeLngth: 1147.19s, TimeInt: 27ms (36.4pps)
 TimeCor=-13.0s, DSPDif(mn,mx,min):35,20,84052
 PPS(min,max,std): 0,42,13.12
 Prof: 3 to 41726, NumProf(t/r): 41723/27110
 ProcTime/Recs: 22:42:21-22:55:15/0-27109
 MxACQtime: 17ms; DRate: 87.1KB/s; Flags: 0, 0, 0
 Pulse: 275ns, IFfilt: 5.0MHz; ppPol: HH
 TxPol: H, PRF: 20 kHz
 Range: Delay 75m, Spacing 15m, Gates 150
 Ave. Pulses: 348, Rng/Prof Aspect@90m/s: 6.1

	Min	Max	Mean	Std	Varc%
hhN(dB)	-70.63	-64.93	-65.72	-78.46	5.3
vvN(dB)	-72.93	-68.10	-68.97	-81.64	5.4
hhL(dB)	-70.74	-7.22	-9.43	-17.64	15.1
vhL(dB)	-73.06	-33.33	-38.04	-44.41	23.0
ppN(m/s)	-15.80	15.80	0.11	9.03	
ppT(m/s)	-0.02	0.02	-0.00	0.00	
vh/hh(dB)	-NaN	-34.12	-41.42	-40.69	118.
hnjmp(dB)	-0.97	4.56	0.16	-11.42	7.0
vnjmp(dB)	-0.98	3.28	0.14	-11.46	6.9



IHOP 2002 (dual-antenna config, modes 1,3,4,7) Data (cal: 49.0,50.0)

W2002-06-02-22-44-09 - SPPMAG
 IRIG:1,UTC: 22:42:21.61 to 23:01:28.79, Dur: 1147s
 TimeLngth: 1147.19s, TimeInt: 27ms (36.4pps)
 TimeCor=-13.0s, DSPDif(mn,mx,min):35,20,84052
 PPS(min,max,std): 0,42,13.12
 Prof: 3 to 41726, NumProf(t/r): 41723/27110
 ProcTime/Recs: 22:42:21-22:55:15/0-27109
 MxACQtime: 17ms; DRate: 87.1KB/s; Flags: 0, 0, 0
 Pulse: 275ns, IFfilt: 5.0MHz; ppPol: HH
 TxPol: H, PRF: 20 kHz
 Range: Delay 75m, Spacing 15m, Gates 150
 Ave. Pulses: 348, Rng/Prof Aspect@90m/s: 6.1

	Min	Max	Mean	Std	Varc%
hhN(dB)	-70.63	-64.93	-65.72	-78.46	5.3
vvN(dB)	-72.93	-68.10	-68.97	-81.64	5.4
hhL(dB)	-70.74	-7.22	-9.43	-17.64	15.1
vhL(dB)	-73.06	-33.33	-38.04	-44.41	23.0
ppN(m/s)	-15.80	15.80	0.11	9.03	
ppT(m/s)	-0.02	0.02	-0.00	0.00	
vh/hh(dB)	-NaN	-34.12	-41.42	-40.69	118.
hnjmp(dB)	-0.97	4.56	0.16	-11.42	7.0
vnjmp(dB)	-0.98	3.28	0.14	-11.46	6.9