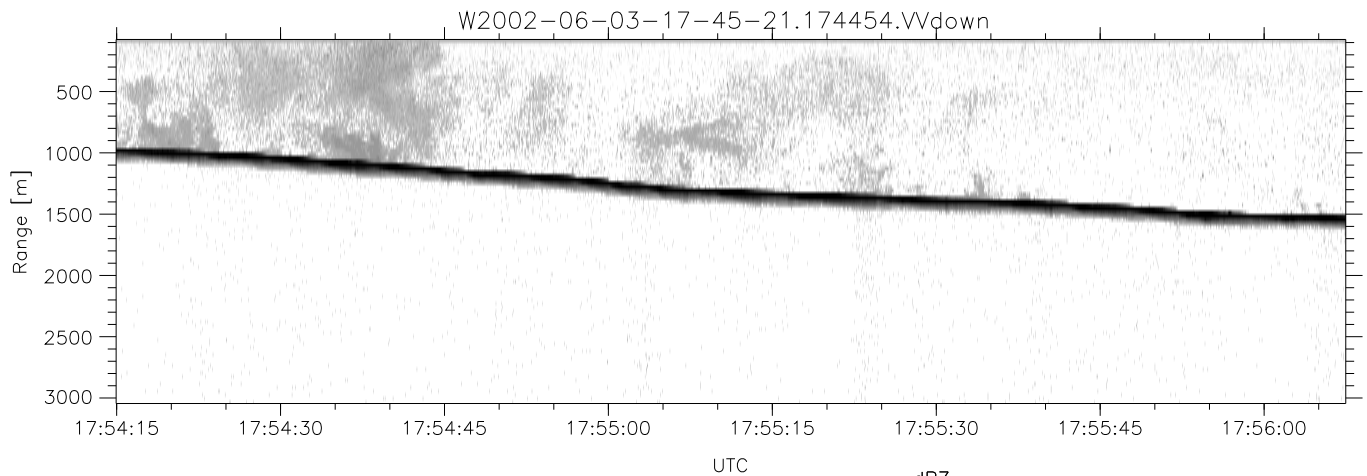
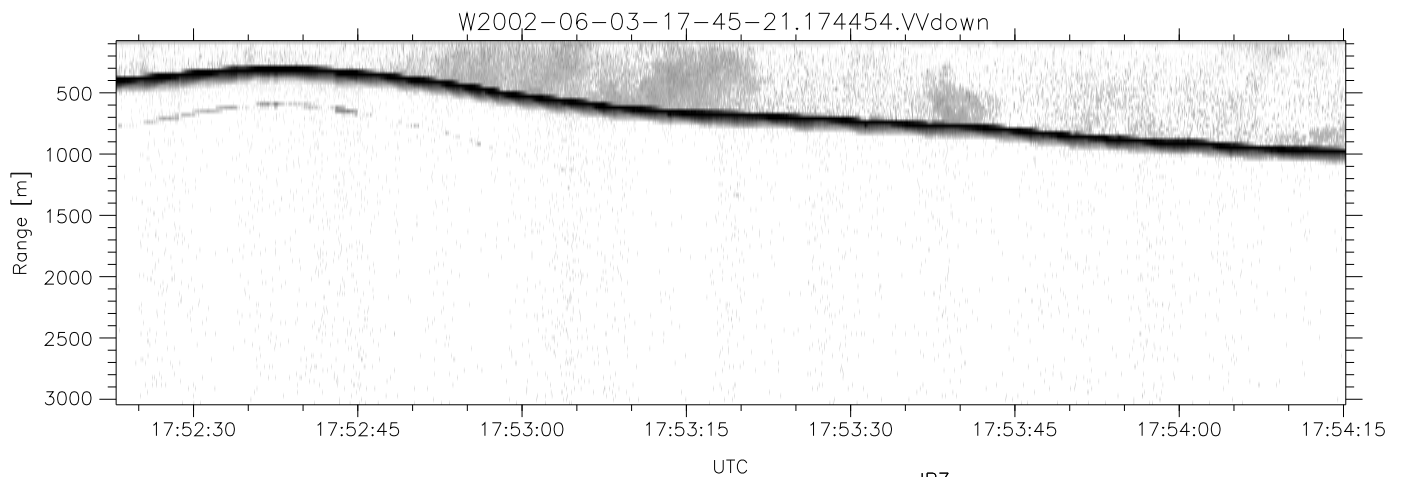
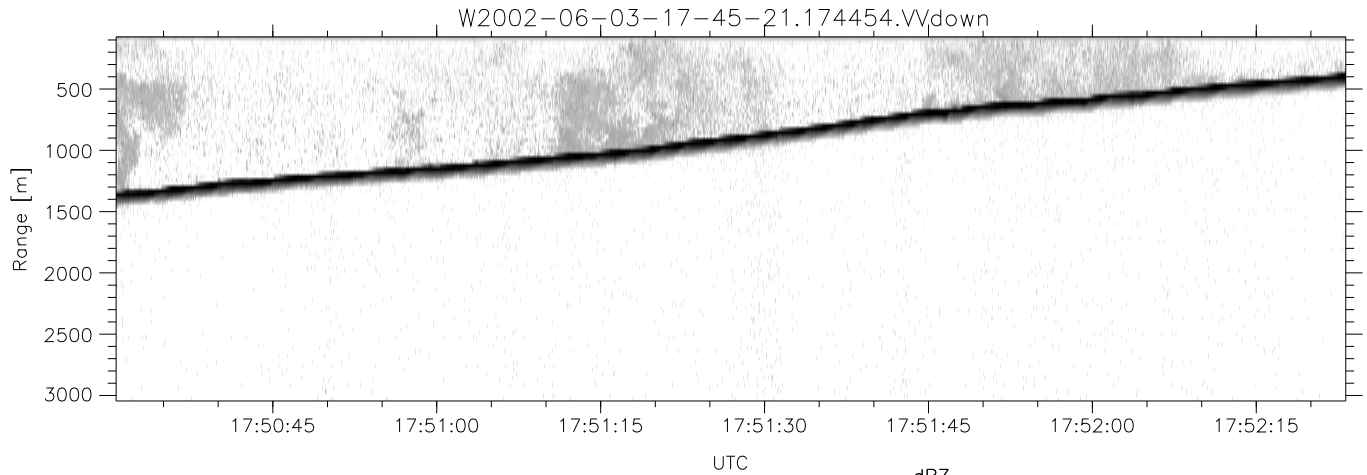


IHOP 2002 (dual-antenna config, modes 1,3,4,7) Data (cal: 55.0,50.0)

W2002-06-03-17-45-21 - PPMAG4  
 IRIG:1,UTC: 17:44:54.52 to 18:25:28.16, Dur: 2434s  
 TimeLngth: 2433.65s, TimeInt: 29ms (34.3pps)  
 TimeCor=-13.0s, DSPDif(mn,mx,min):29,-971,3028  
 PPS(min,max,std): 0,140,11.43  
 Prof: 2039 to 85490, NumProf(t/r): 83451/34138  
 ProcTime/Recs: 17:44:54-18:01:29/0-34137  
 MxACQtime: 33ms; DRate: 191.9KB/s; Flags: 0, 0, 0  
 Pulse: 275ns, IFfilt: 5.0MHz; ppPol: HH HV VV  
 TxPol: HHVV, PRF: 20 10 20 10 kHz  
 Range: Delay 75m, Spacing 30m, Gates 100  
 Ave. Pulses: 84, Rng/Prof Aspect@90m/s: 11.4

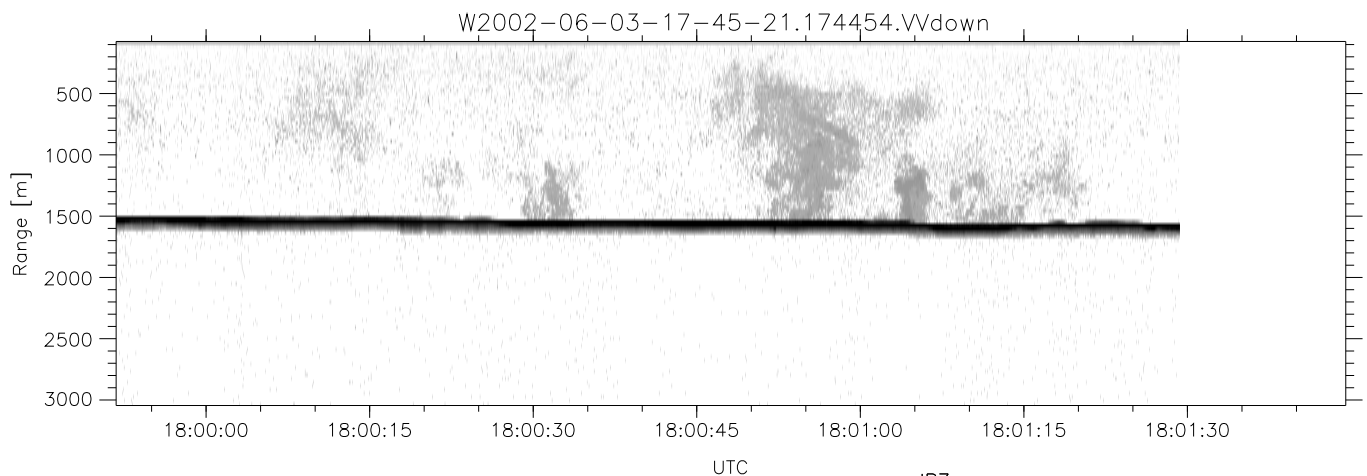
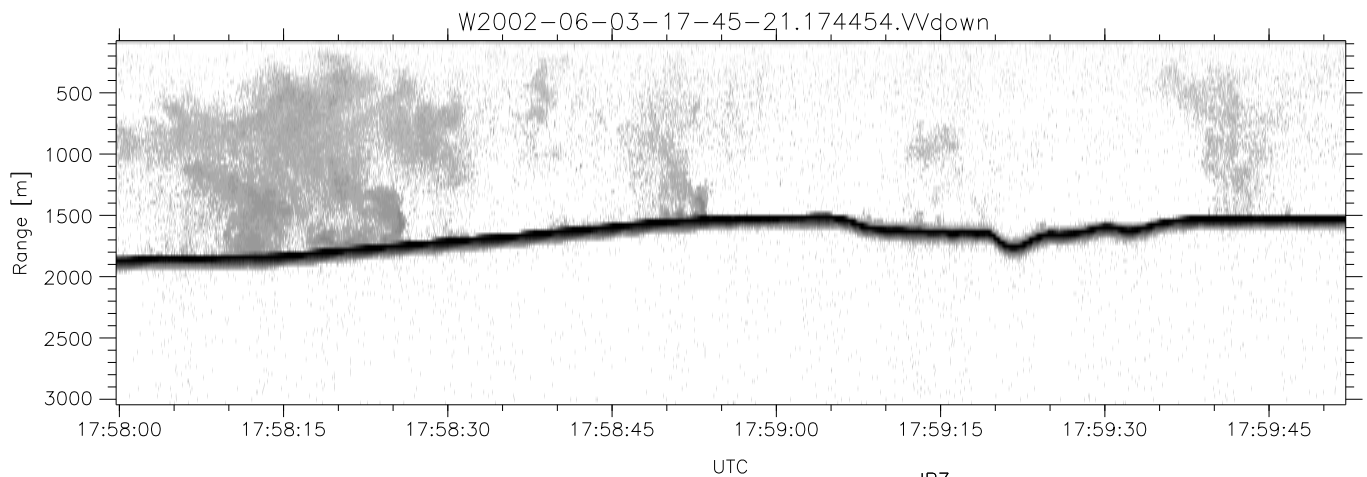
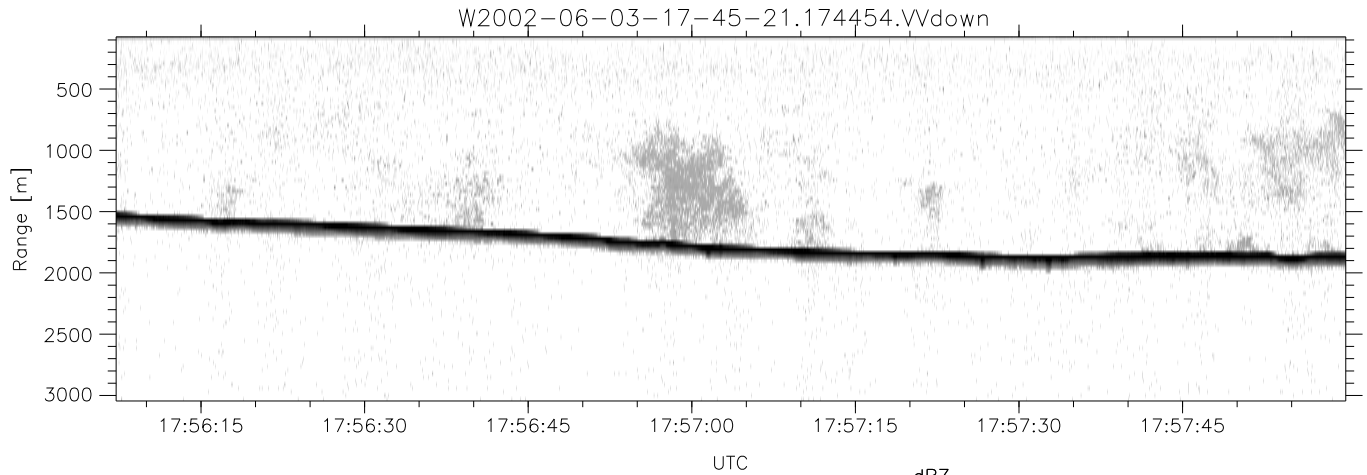
	Min	Max	Mean	Std	Varc%
hhN(dB)	-66.85	-63.28	-64.89	-75.00	9.7
vvN(dB)	-67.45	-63.89	-65.56	-75.61	9.9
hhL(dB)	-28.41	-4.80	-10.99	-13.37	57.8
vvL(dB)	-16.38	-5.66	-9.94	-13.94	39.9
ppN(m/s)	-12.49	12.50	-0.07	4.07	
ppT(m/s)	-98.71	98.73	-0.52	32.16	
hh/vv(dB)	-NaN	96.56	-NaN	91.52	-305
vh/hh(dB)	-NaN	-5.89	-39.50	-26.33	2076
hv/vv(dB)	-NaN	-21.63	-44.34	-36.20	651.
hnjmp(dB)	-2.31	2.49	0.15	-8.48	13.7
vnjmp(dB)	-2.54	2.20	0.13	-8.47	13.8



IHOP 2002 (dual-antenna config, modes 1,3,4,7) Data (cal: 55.0,50.0)

W2002-06-03-17-45-21 - PPMAG4  
 IRIG:1,UTC: 17:44:54.52 to 18:25:28.16, Dur: 2434s  
 TimeLngth: 2433.65s, TimeInt: 29ms (34.3pps)  
 TimeCor=-13.0s, DSPDif(mn,mx,min):29,-971,3028  
 PPS(min,max,std): 0,140,11.43  
 Prof: 2039 to 85490, NumProf(t/r): 83451/34138  
 ProcTime/Recs: 17:44:54-18:01:29/0-34137  
 MxACQtime: 33ms; DRate: 191.9KB/s; Flags: 0, 0, 0  
 Pulse: 275ns, IFilt: 5.0MHz; ppPol: HH HV VV  
 TxPol: HHVV, PRF: 20 10 20 10 kHz  
 Range: Delay 75m, Spacing 30m, Gates 100  
 Ave. Pulses: 84, Rng/Prof Aspect@90m/s: 11.4

	Min	Max	Mean	Std	Varc%
hhN(dB)	-66.85	-63.28	-64.89	-75.00	9.7
vvN(dB)	-67.45	-63.89	-65.56	-75.61	9.9
hhL(dB)	-28.41	-4.80	-10.99	-13.37	57.8
vvL(dB)	-16.38	-5.66	-9.94	-13.94	39.9
ppN(m/s)	-12.49	12.50	-0.07	4.07	
ppT(m/s)	-98.71	98.73	-0.52	32.16	
hh/vv(dB)	-NaN	96.56	-NaN	91.52	-305
vh/hh(dB)	-NaN	-5.89	-39.50	-26.33	2076
hv/vv(dB)	-NaN	-21.63	-44.34	-36.20	651.
hnjmp(dB)	-2.31	2.49	0.15	-8.48	13.7
vnjmp(dB)	-2.54	2.20	0.13	-8.47	13.8



IHOP 2002 (dual-antenna config, modes 1,3,4,7) Data (cal: 55.0,50.0)

W2002-06-03-17-45-21 - PPMAG4  
 IRIG:1,UTC: 17:44:54.52 to 18:25:28.16, Dur: 2434s  
 TimeLngth: 2433.65s, TimeInt: 29ms (34.3pps)  
 TimeCor=-13.0s, DSPDif(mn,mx,min):29,-971,3028  
 PPS(min,max,std): 0,140,11.43  
 Prof: 2039 to 85490, NumProf(t/r): 83451/34138  
 ProcTime/Recs: 17:44:54-18:01:29/0-34137  
 MxACQtime: 33ms; DRate: 191.9KB/s; Flags: 0, 0, 0  
 Pulse: 275ns, IFfilt: 5.0MHz; ppPol: HH HV VV  
 TxPol: HHVV, PRF: 20 10 20 10 kHz  
 Range: Delay 75m, Spacing 30m, Gates 100  
 Ave. Pulses: 84, Rng/Prof Aspect@90m/s: 11.4

	Min	Max	Mean	Std	Varc%
hhN(dB)	-66.85	-63.28	-64.89	-75.00	9.7
vvN(dB)	-67.45	-63.89	-65.56	-75.61	9.9
hhL(dB)	-28.41	-4.80	-10.99	-13.37	57.8
vvL(dB)	-16.38	-5.66	-9.94	-13.94	39.9
ppN(m/s)	-12.49	12.50	-0.07	4.07	
ppT(m/s)	-98.71	98.73	-0.52	32.16	
hh/vv(dB)	-NaN	96.56	-NaN	91.52	-305
vh/hh(dB)	-NaN	-5.89	-39.50	-26.33	2076
hv/vv(dB)	-NaN	-21.63	-44.34	-36.20	651.
hnjmp(dB)	-2.31	2.49	0.15	-8.48	13.7
vnjmp(dB)	-2.54	2.20	0.13	-8.47	13.8