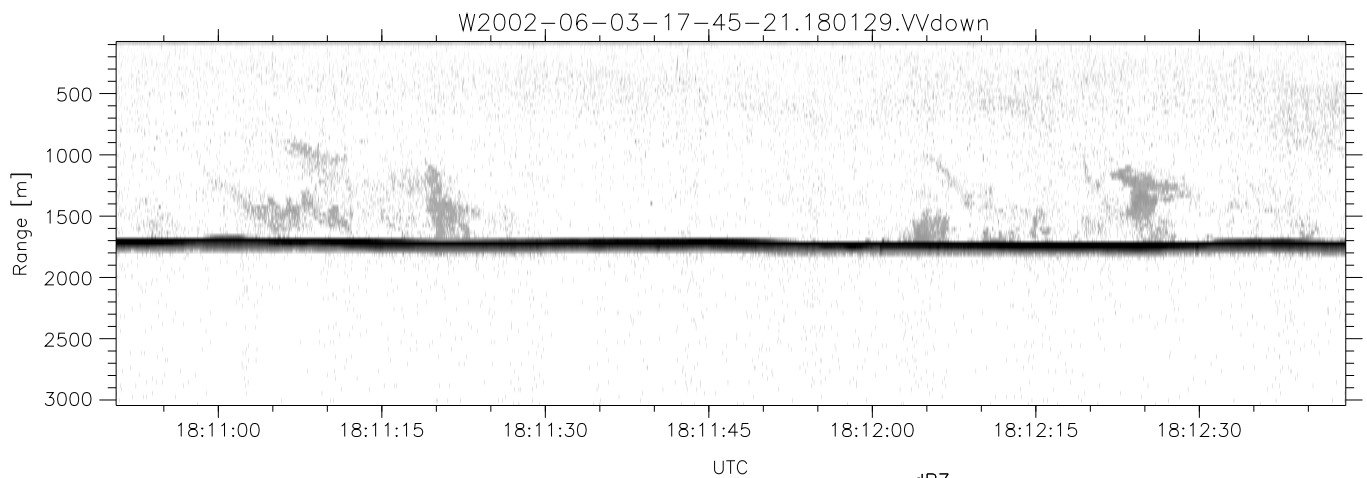
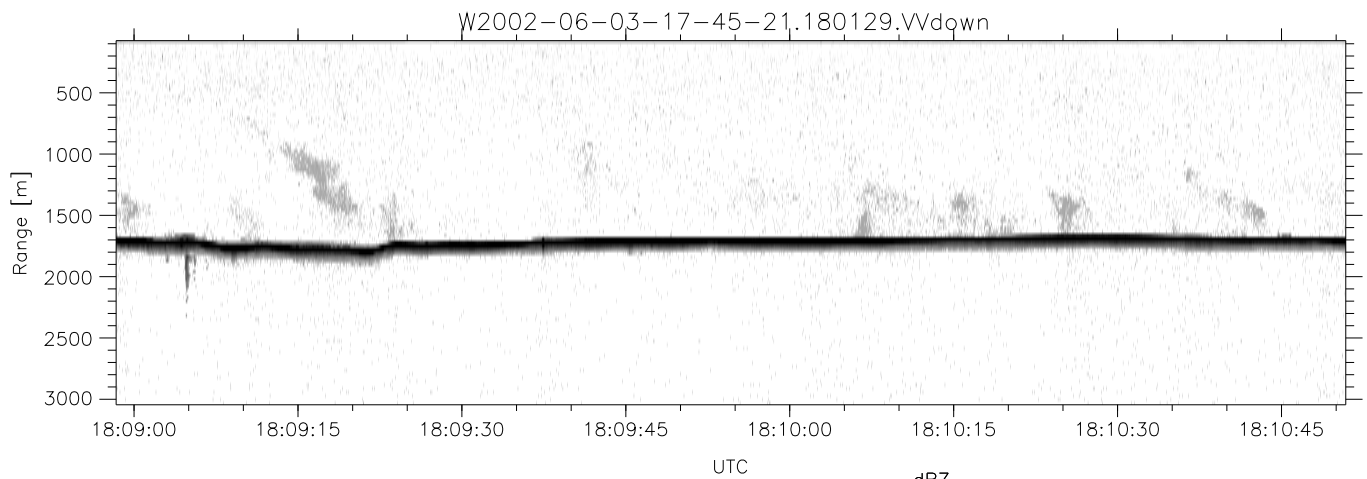
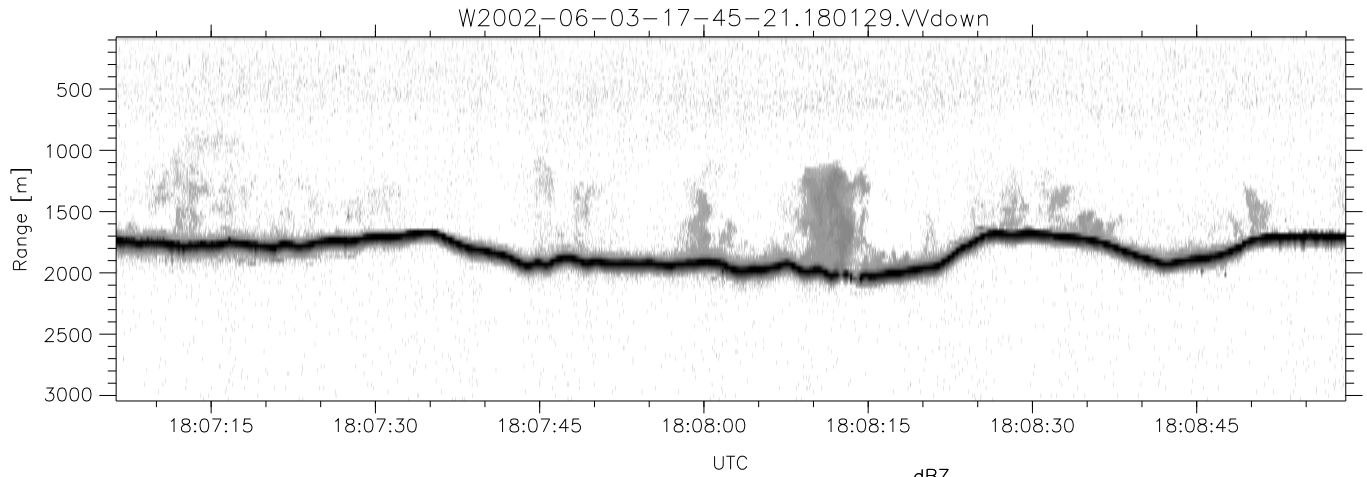


IHOP 2002 (dual-antenna config, modes 1,3,4,7) Data (cal: 55.0,50.0)

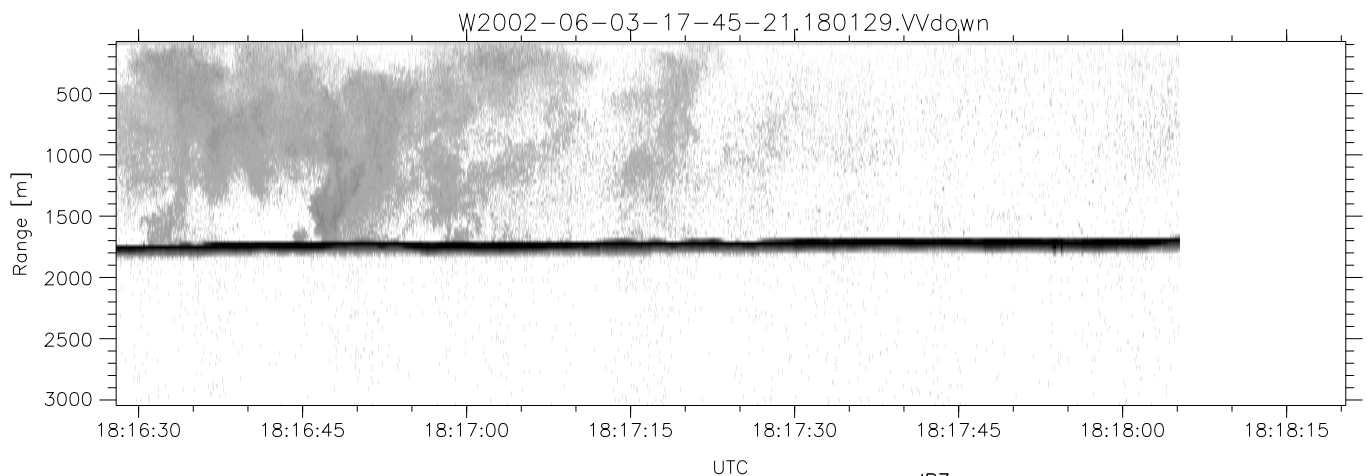
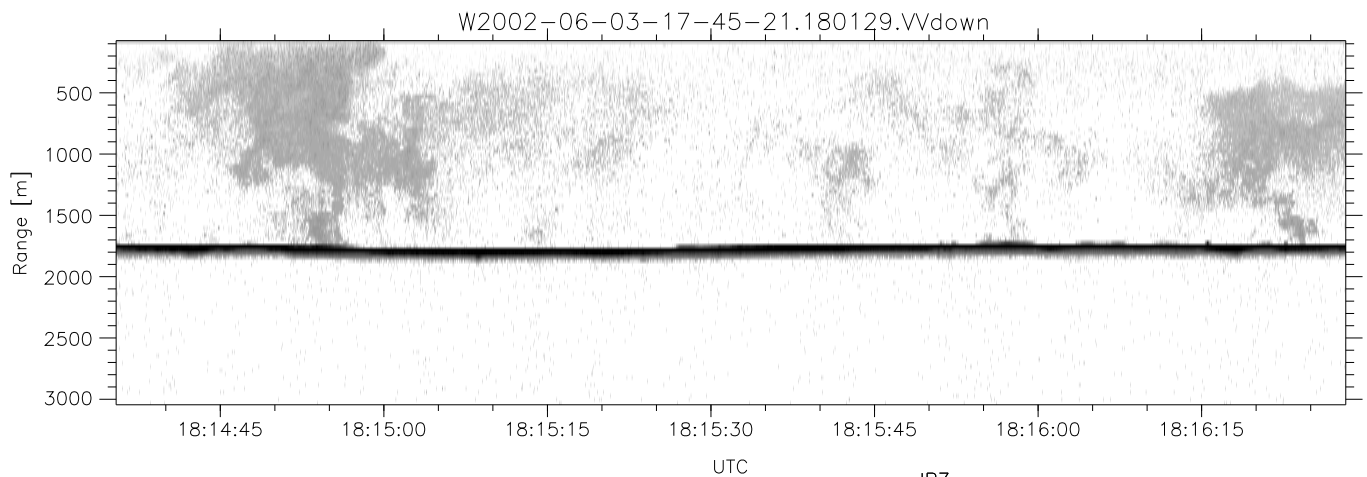
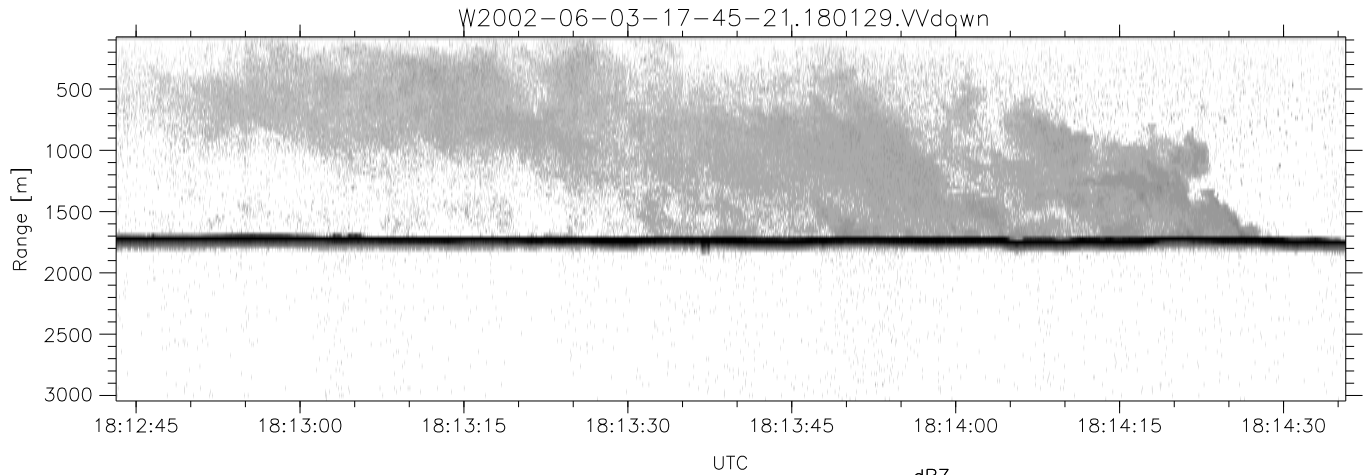
	Min	Max	Mean	Std	Varc%
W2002-06-03-17-45-21 - PPMAG4					
IRIG:1,UTC: 17:44:54.52 to 18:25:28.16, Dur: 2434s					
TimeLngth: 2433.65s, TimeInt: 29ms (34.3pps)					
TimeCor=-13.0s, DSPDif(mn,mx,min):29,-971,3028					
PPS(min,max,std): 0,140,10.78					
Prof: 2039 to 85490, NumProf(t/r): 83451/34138					
ProcTime/Recs: 18:01:29-18:18:05/34138-68275					
MxACQtime: 33ms; DRate: 191.9KB/s; Flags: 0, 0, 0					
Pulse: 275ns, IFfilt: 5.0MHz; ppPol: HH HV VV					
TxPol: HHVV, PRF: 20 10 20 10 kHz					
Range: Delay 75m, Spacing 30m, Gates 100					
Ave. Pulses: 84, Rng/Prof Aspect@90m/s: 11.4					
hhN(dB)	-66.80	-63.25	-64.88	-74.98	9.8
vvN(dB)	-67.33	-63.75	-65.46	-75.50	9.9
hhL(dB)	-29.43	-10.49	-13.65	-16.76	48.9
vvL(dB)	-18.27	-9.11	-11.85	-16.91	31.2
ppN(m/s)	-12.98	12.85	0.01	4.10	
ppT(m/s)	-102.5	101.51	0.05	32.37	
hh/vv(dB)	-NaN	98.77	-NaN	80.05	-523
vh/hh(dB)	-NaN	-29.46	-46.61	-41.31	338.
hv/vv(dB)	-NaN	-33.86	-52.75	-45.50	531.
hnjmp(dB)	-2.03	2.66	0.16	-8.45	13.8
vnjmp(dB)	-2.16	2.44	0.16	-8.44	13.8



IHOP 2002 (dual-antenna config, modes 1,3,4,7) Data (cal: 55.0,50.0)

W2002-06-03-17-45-21 - PPMAG4  
 IRIG:1,UTC: 17:44:54.52 to 18:25:28.16, Dur: 2434s  
 TimeLngth: 2433.65s, TimeInt: 29ms (34.3pps)  
 TimeCor=-13.0s, DSPDif(mn,mx,min):29,-971,3028  
 PPS(min,max,std): 0,140,10.78  
 Prof: 2039 to 85490, NumProf(t/r): 83451/34138  
 ProcTime/Recs: 18:01:29-18:18:05/34138-68275  
 MxACQtime: 33ms; DRate: 191.9KB/s; Flags: 0, 0, 0  
 Pulse: 275ns, IFfilt: 5.0MHz; ppPol: HH HV VV  
 TxPol: HHVV, PRF: 20 10 20 10 kHz  
 Range: Delay 75m, Spacing 30m, Gates 100  
 Ave. Pulses: 84, Rng/Prof Aspect@90m/s: 11.4

	Min	Max	Mean	Std	Varc%
hhN(dB)	-66.80	-63.25	-64.88	-74.98	9.8
vvN(dB)	-67.33	-63.75	-65.46	-75.50	9.9
hhL(dB)	-29.43	-10.49	-13.65	-16.76	48.9
vvL(dB)	-18.27	-9.11	-11.85	-16.91	31.2
ppN(m/s)	-12.98	12.85	0.01	4.10	
ppT(m/s)	-102.5	101.51	0.05	32.37	
hh/vv(dB)	-NaN	98.77	-NaN	80.05	-523
vh/hh(dB)	-NaN	-29.46	-46.61	-41.31	338.
hv/vv(dB)	-NaN	-33.86	-52.75	-45.50	531.
hnjmp(dB)	-2.03	2.66	0.16	-8.45	13.8
vnjmp(dB)	-2.16	2.44	0.16	-8.44	13.8



IHOP 2002 (dual-antenna config, modes 1,3,4,7) Data (cal: 55.0,50.0)

W2002-06-03-17-45-21 - PPMAG4  
 IRIG:1,UTC: 17:44:54.52 to 18:25:28.16, Dur: 2434s  
 TimeLngth: 2433.65s, TimeInt: 29ms (34.3pps)  
 TimeCor=-13.0s, DSPDif(mn,mx,min):29,-971,3028  
 PPS(min,max,std): 0,140,10.78  
 Prof: 2039 to 85490, NumProf(t/r): 83451/34138  
 ProcTime/Recs: 18:01:29-18:18:05/34138-68275  
 MxAcQtime: 33ms; DRate: 191.9KB/s; Flags: 0, 0, 0  
 Pulse: 275ns, IFfilt: 5.0MHz; ppPol: HH HV VV  
 TxPol: HHVV, PRF: 20 10 20 10 kHz  
 Range: Delay 75m, Spacing 30m, Gates 100  
 Ave. Pulses: 84, Rng/Prof Aspect@90m/s: 11.4

	Min	Max	Mean	Std	Varc%
hhN(dB)	-66.80	-63.25	-64.88	-74.98	9.8
vvN(dB)	-67.33	-63.75	-65.46	-75.50	9.9
hhL(dB)	-29.43	-10.49	-13.65	-16.76	48.9
vvL(dB)	-18.27	-9.11	-11.85	-16.91	31.2
ppN(m/s)	-12.98	12.85	0.01	4.10	
ppT(m/s)	-102.5	101.51	0.05	32.37	
hh/vv(dB)	-NaN	98.77	-NaN	80.05	-523
vh/hh(dB)	-NaN	-29.46	-46.61	-41.31	338.
hv/vv(dB)	-NaN	-33.86	-52.75	-45.50	531.
hnjmp(dB)	-2.03	2.66	0.16	-8.45	13.8
vnjmp(dB)	-2.16	2.44	0.16	-8.44	13.8