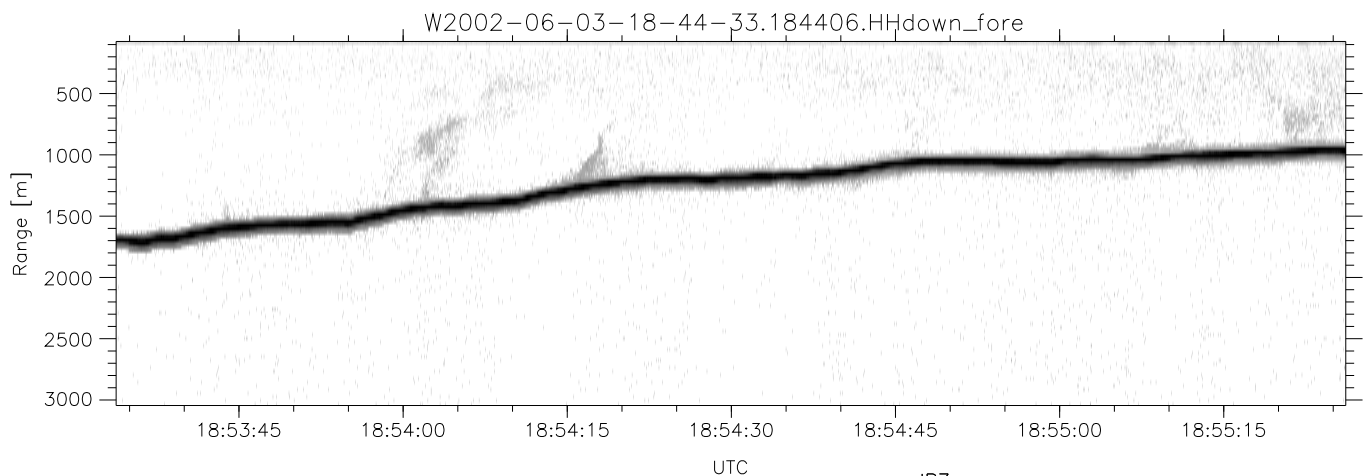
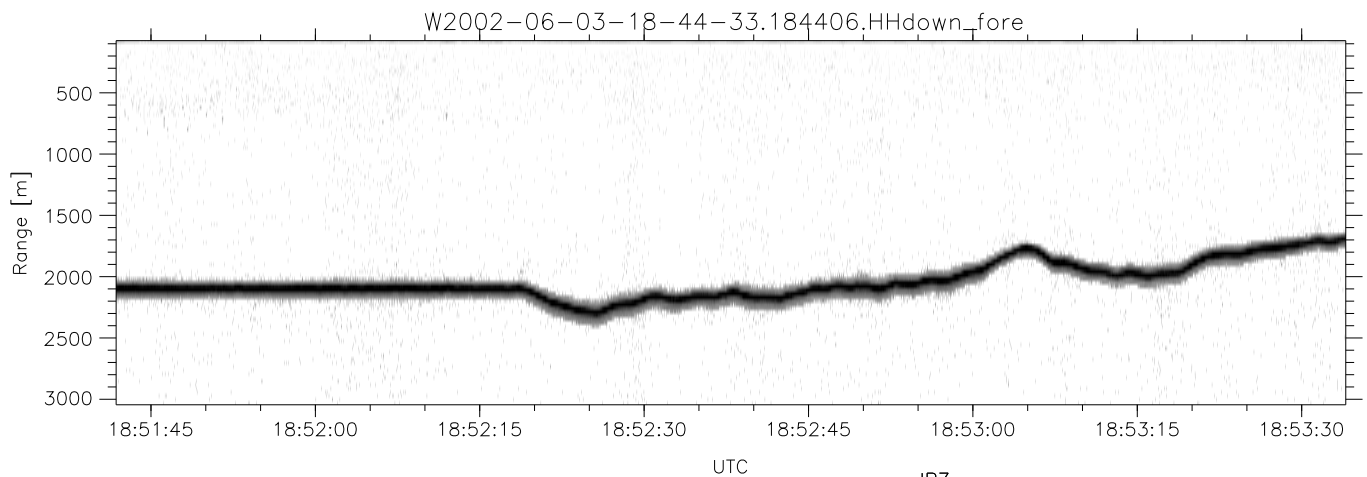
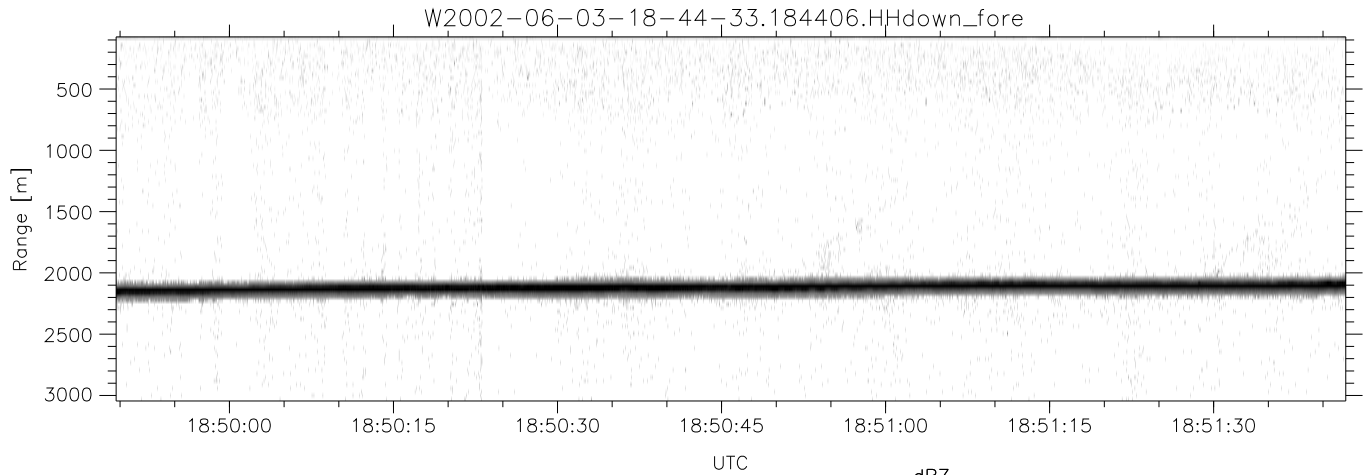


IHOP 2002 (dual-antenna config, modes 1,3,4,7) Data (cal: 55.0,50.0)

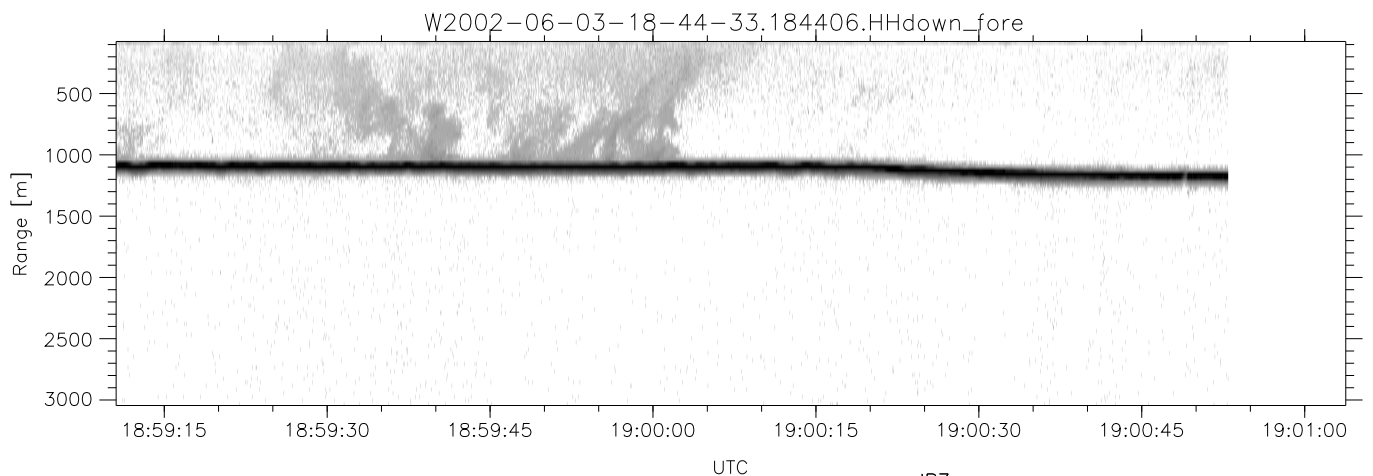
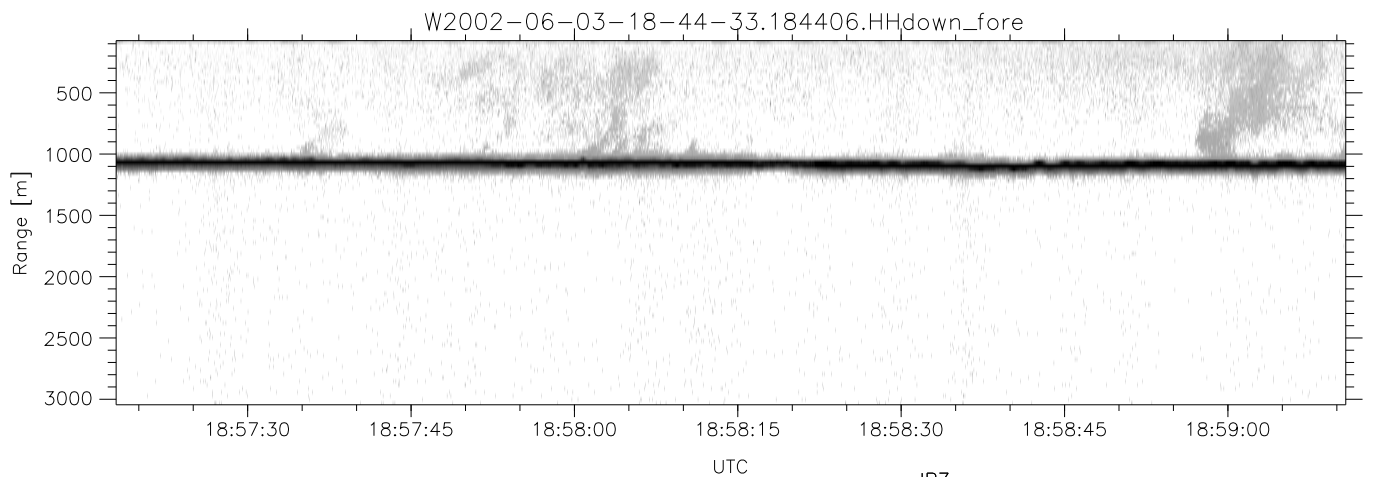
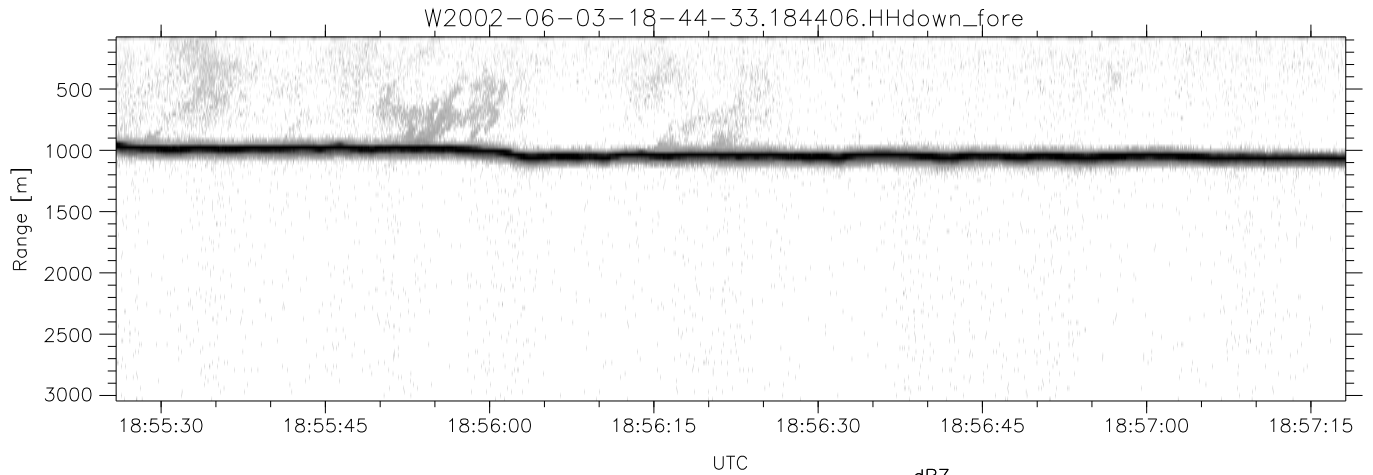
W2002-06-03-18-44-33 - PPMAG4	Min	Max	Mean	Std	Varc%	
IRIG:1,UTC: 18:44:06.73 to 20:57:30.98, Dur: 8004s	hhN(dB)	-67.08	-62.79	-65.07	-74.85	10.5
TimeLngth: 8004.24s, TimeInt: 29ms (34.1pps)	vvN(dB)	-67.98	-61.97	-65.73	-74.21	14.2
TimeCor=-13.0s, DSPDif(mn,mx,min):29,-971,3028	hhL(dB)	-31.84	-11.31	-18.74	-21.64	51.4
PPS(min,max,std): 0,140,8.09	vvL(dB)	-24.42	-13.49	-18.41	-22.15	42.3
Prof: 1252 to 274451, NumProf(t/r): 273199/34138	ppN(m/s)	-12.79	12.54	0.03	4.17	
ProcTime/Recs: 18:44:06-19:00:52/0-34137	ppT(m/s)	-101.0	99.03	0.22	32.98	
MxAcQtime: 33ms; DRate: 191.1KB/s; Flags: 0, 0, 0	hh/vv(dB)	-NaN	100.15	51.43	76.56	3258
Pulse: 275ns, IFilt: 5.0MHz; ppPol: HH HV VV	vh/hh(dB)	-NaN	-23.57	-46.57	-39.83	472.
TxPol: HHVV, PRF: 20 10 20 10 kHz	hv/vv(dB)	-NaN	-31.18	-49.59	-44.19	346.
Range: Delay 75m, Spacing 30m, Gates 100	hnjmp(dB)	-2.31	1.96	-0.07	-8.67	13.8
Ave. Pulses: 84, Rng/Prof Aspect@90m/s: 11.4	vnjmp(dB)	-2.40	2.93	-0.08	-8.66	13.9



IHOP 2002 (dual-antenna config, modes 1,3,4,7) Data (cal: 55.0,50.0)

W2002-06-03-18-44-33 - PPMAG4  
 IRIG:1,UTC: 18:44:06.73 to 20:57:30.98, Dur: 8004s  
 TimeLngth: 8004.24s, TimeInt: 29ms (34.1pps)  
 TimeCor=-13.0s, DSPDif(mn,mx,min):29,-971,3028  
 PPS(min,max,std): 0,140,8.09  
 Prof: 1252 to 274451, NumProf(t/r): 273199/34138  
 ProcTime/Recs: 18:44:06-19:00:52/0-34137  
 MxACQtime: 33ms; DRate: 191.1KB/s; Flags: 0, 0, 0  
 Pulse: 275ns, IFilt: 5.0MHz; ppPol: HH HV VV  
 TxPol: HHVV, PRF: 20 10 20 10 kHz  
 Range: Delay 75m, Spacing 30m, Gates 100  
 Ave. Pulses: 84, Rng/Prof Aspect@90m/s: 11.4

	Min	Max	Mean	Std	Varc%
hhN(dB)	-67.08	-62.79	-65.07	-74.85	10.5
vvN(dB)	-67.98	-61.97	-65.73	-74.21	14.2
hhL(dB)	-31.84	-11.31	-18.74	-21.64	51.4
vvL(dB)	-24.42	-13.49	-18.41	-22.15	42.3
ppN(m/s)	-12.79	12.54	0.03	4.17	
ppT(m/s)	-101.0	99.03	0.22	32.98	
hh/vv(dB)	-NaN	100.15	51.43	76.56	3258
vh/hh(dB)	-NaN	-23.57	-46.57	-39.83	472.
hv/vv(dB)	-NaN	-31.18	-49.59	-44.19	346.
hnjmp(dB)	-2.31	1.96	-0.07	-8.67	13.8
vnjmp(dB)	-2.40	2.93	-0.08	-8.66	13.9



IHOP 2002 (dual-antenna config, modes 1,3,4,7) Data (cal: 55.0,50.0)

W2002-06-03-18-44-33 - PPMAG4  
 IRIG:1,UTC: 18:44:06.73 to 20:57:30.98, Dur: 8004s  
 TimeLngth: 8004.24s, TimeInt: 29ms (34.1pps)  
 TimeCor=-13.0s, DSPDif(mn,mx,min):29,-971,3028  
 PPS(min,max,std): 0,140,8.09  
 Prof: 1252 to 274451, NumProf(t/r): 273199/34138  
 ProcTime/Recs: 18:44:06-19:00:52/0-34137  
 MxACQtime: 33ms; DRate: 191.1KB/s; Flags: 0, 0, 0  
 Pulse: 275ns, IFilt: 5.0MHz; ppPol: HH HV VV  
 TxPol: HHVV, PRF: 20 10 20 10 kHz  
 Range: Delay 75m, Spacing 30m, Gates 100  
 Ave. Pulses: 84, Rng/Prof Aspect@90m/s: 11.4

	Min	Max	Mean	Std	Varc%
hhN(dB)	-67.08	-62.79	-65.07	-74.85	10.5
vvN(dB)	-67.98	-61.97	-65.73	-74.21	14.2
hhL(dB)	-31.84	-11.31	-18.74	-21.64	51.4
vvL(dB)	-24.42	-13.49	-18.41	-22.15	42.3
ppN(m/s)	-12.79	12.54	0.03	4.17	
ppT(m/s)	-101.0	99.03	0.22	32.98	
hh/vv(dB)	-NaN	100.15	51.43	76.56	3258
vh/hh(dB)	-NaN	-23.57	-46.57	-39.83	472.
hv/vv(dB)	-NaN	-31.18	-49.59	-44.19	346.
hnjmp(dB)	-2.31	1.96	-0.07	-8.67	13.8
vnjmp(dB)	-2.40	2.93	-0.08	-8.66	13.9