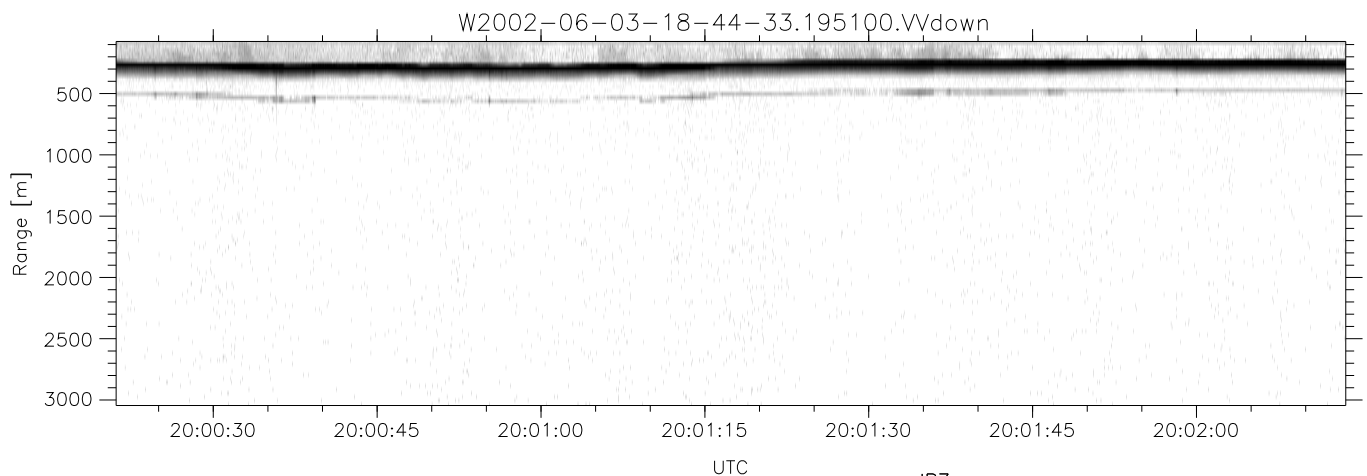
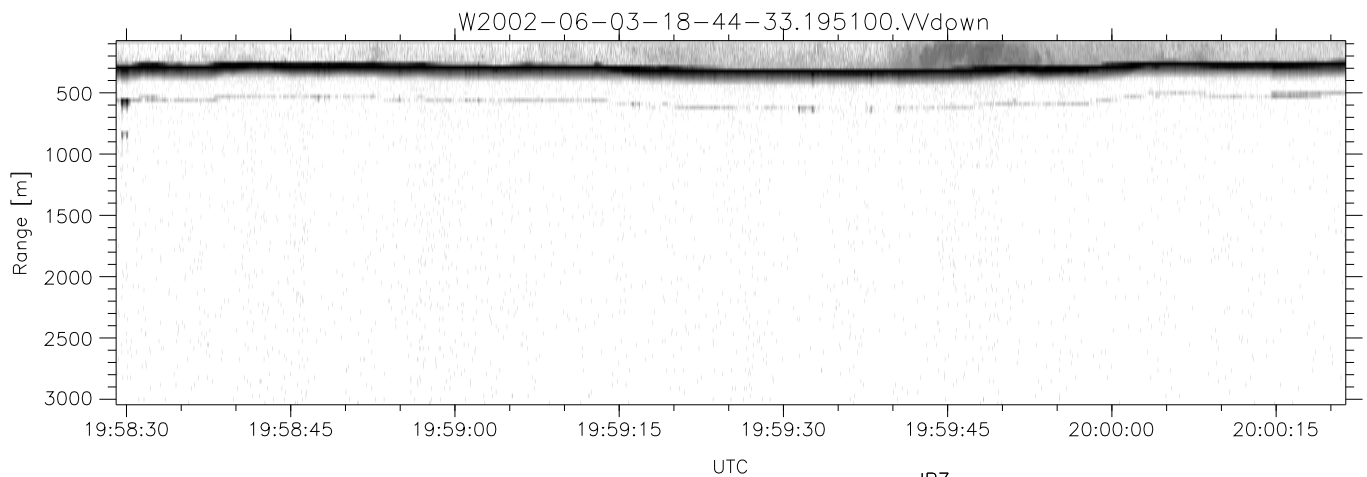
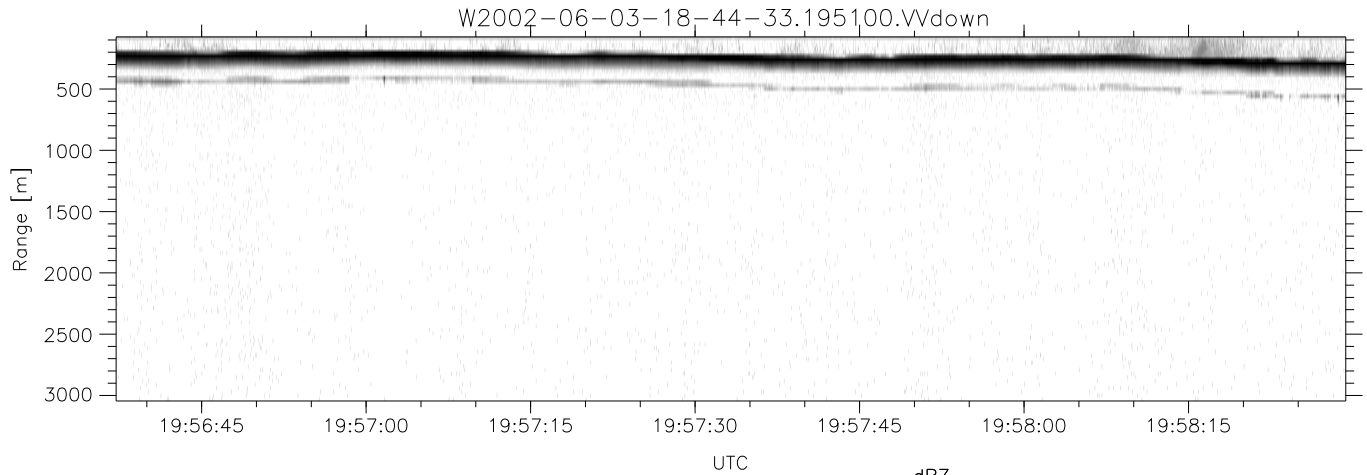


IHOP 2002 (dual-antenna config, modes 1,3,4,7) Data (cal: 55.0,50.0)

W2002-06-03-18-44-33 - PPMAG4
 IRIG:1,UTC: 18:44:06.73 to 20:57:30.98, Dur: 8004s
 TimeLngth: 8004.24s, TimeInt: 29ms (34.1pps)
 TimeCor=-13.0s, DSPDif(mn,mx,min):29,-971,3028
 PPS(min,max,std): 0,140,5.89
 Prof: 1252 to 274451, NumProf(t/r): 273199/34138
 ProcTime/Recs: 19:51:00-20:07:38/136552-170689
 MxACQtime: 33ms; DRate: 191.1KB/s; Flags: 0, 0, 0
 Pulse: 275ns, IFilt: 5.0MHz; ppPol: HH HV VV
 TxPol: HHVV, PRF: 20 10 20 10 kHz
 Range: Delay 75m, Spacing 30m, Gates 100
 Ave. Pulses: 84, Rng/Prof Aspect@90m/s: 11.4

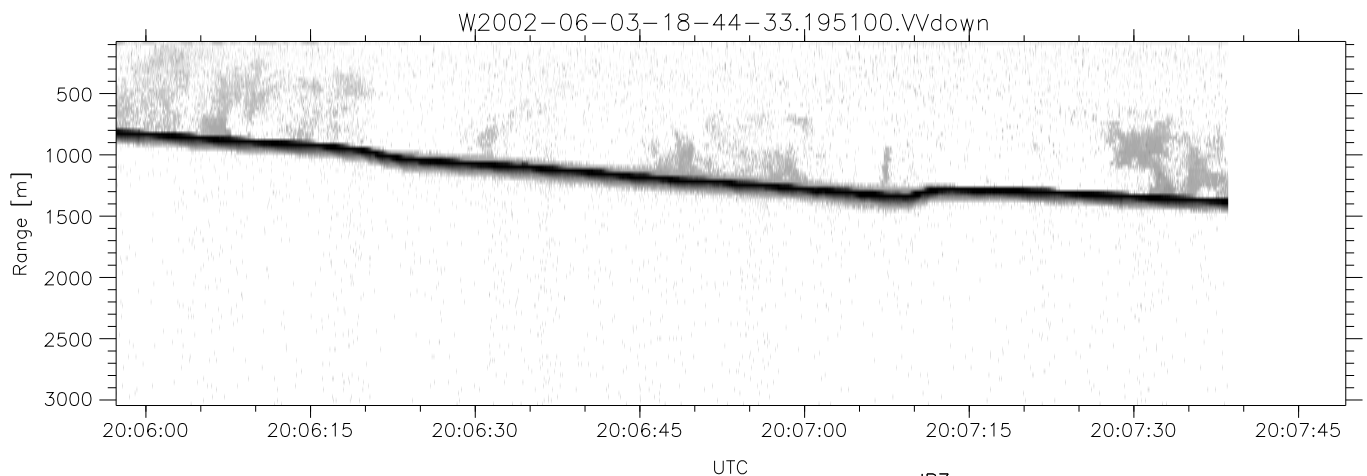
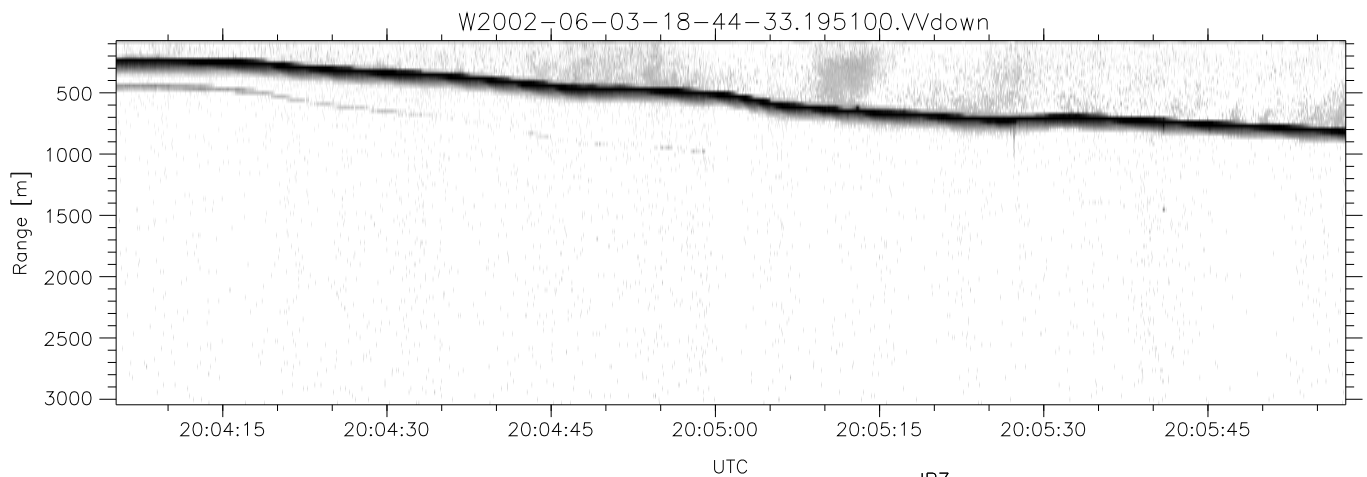
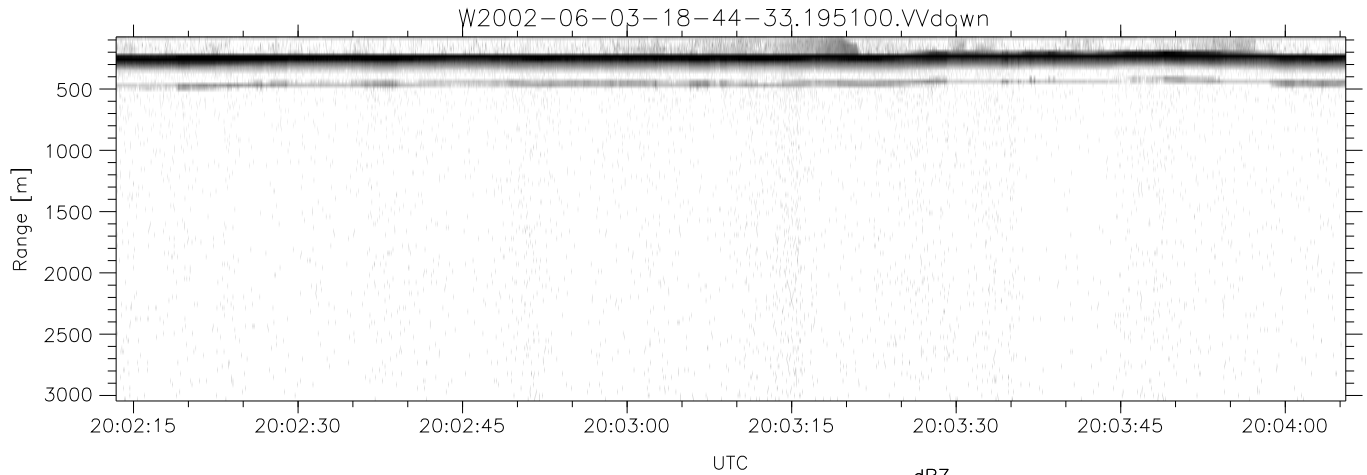
	Min	Max	Mean	Std	Varc%
hhN(dB)	-67.17	-62.92	-65.36	-74.68	11.7
vvN(dB)	-68.05	-64.56	-66.28	-76.27	10.0
hhL(dB)	-28.14	-8.58	-13.95	-16.70	53.0
vvL(dB)	-36.49	-12.44	-19.83	-21.69	65.1
ppN(m/s)	-12.74	12.61	-0.01	4.16	
ppT(m/s)	-100.6	99.63	-0.08	32.87	
hh/vv(dB)	-NaN	100.94	51.81	75.42	2293
vh/hh(dB)	-NaN	6.74	-23.19	-11.82	1373
hv/vv(dB)	-NaN	-16.67	-38.37	-33.15	332.
hnjmp(dB)	-2.55	2.17	-0.08	-8.66	13.9
vnjmp(dB)	-2.51	2.22	-0.08	-8.60	14.0



IHOP 2002 (dual-antenna config, modes 1,3,4,7) Data (cal: 55.0,50.0)

W2002-06-03-18-44-33 - PPMAG4
 IRIG:1,UTC: 18:44:06.73 to 20:57:30.98, Dur: 8004s
 TimeLngth: 8004.24s, TimeInt: 29ms (34.1pps)
 TimeCor=-13.0s, DSPDif(mn,mx,min):29,-971,3028
 PPS(min,max,std): 0,140,5.89
 Prof: 1252 to 274451, NumProf(t/r): 273199/34138
 ProcTime/Recs: 19:51:00-20:07:38/136552-170689
 MxACQtime: 33ms; DRate: 191.1KB/s; Flags: 0, 0, 0
 Pulse: 275ns, IFfilt: 5.0MHz; ppPol: HH HV VV
 TxPol: HHVV, PRF: 20 10 20 10 kHz
 Range: Delay 75m, Spacing 30m, Gates 100
 Ave. Pulses: 84, Rng/Prof Aspect@90m/s: 11.4

	Min	Max	Mean	Std	Varc%
hhN(dB)	-67.17	-62.92	-65.36	-74.68	11.7
vvN(dB)	-68.05	-64.56	-66.28	-76.27	10.0
hhL(dB)	-28.14	-8.58	-13.95	-16.70	53.0
vvL(dB)	-36.49	-12.44	-19.83	-21.69	65.1
ppN(m/s)	-12.74	12.61	-0.01	4.16	
ppT(m/s)	-100.6	99.63	-0.08	32.87	
hh/vv(dB)	-NaN	100.94	51.81	75.42	2293
vh/hh(dB)	-NaN	6.74	-23.19	-11.82	1373
hv/vv(dB)	-NaN	-16.67	-38.37	-33.15	332.
hnjmp(dB)	-2.55	2.17	-0.08	-8.66	13.9
vnjmp(dB)	-2.51	2.22	-0.08	-8.60	14.0



IHOP 2002 (dual-antenna config, modes 1,3,4,7) Data (cal: 55.0,50.0)

W2002-06-03-18-44-33 - PPMAG4
 IRIG:1,UTC: 18:44:06.73 to 20:57:30.98, Dur: 8004s
 TimeLngth: 8004.24s, TimeInt: 29ms (34.1pps)
 TimeCor=-13.0s, DSPDif(mn,mx,min):29,-971,3028
 PPS(min,max,std): 0,140,5.89
 Prof: 1252 to 274451, NumProf(t/r): 273199/34138
 ProcTime/Recs: 19:51:00-20:07:38/136552-170689
 MxACQtime: 33ms; DRate: 191.1KB/s; Flags: 0, 0, 0
 Pulse: 275ns, IFfilt: 5.0MHz; ppPol: HH HV VV
 TxPol: HHVV, PRF: 20 10 20 10 kHz
 Range: Delay 75m, Spacing 30m, Gates 100
 Ave. Pulses: 84, Rng/Prof Aspect@90m/s: 11.4

	Min	Max	Mean	Std	Varc%
hhN(dB)	-67.17	-62.92	-65.36	-74.68	11.7
vvN(dB)	-68.05	-64.56	-66.28	-76.27	10.0
hhL(dB)	-28.14	-8.58	-13.95	-16.70	53.0
vvL(dB)	-36.49	-12.44	-19.83	-21.69	65.1
ppN(m/s)	-12.74	12.61	-0.01	4.16	
ppT(m/s)	-100.6	99.63	-0.08	32.87	
hh/vv(dB)	-NaN	100.94	51.81	75.42	2293
vh/hh(dB)	-NaN	6.74	-23.19	-11.82	1373
hv/vv(dB)	-NaN	-16.67	-38.37	-33.15	332.
hnjmp(dB)	-2.55	2.17	-0.08	-8.66	13.9
vnjmp(dB)	-2.51	2.22	-0.08	-8.60	14.0