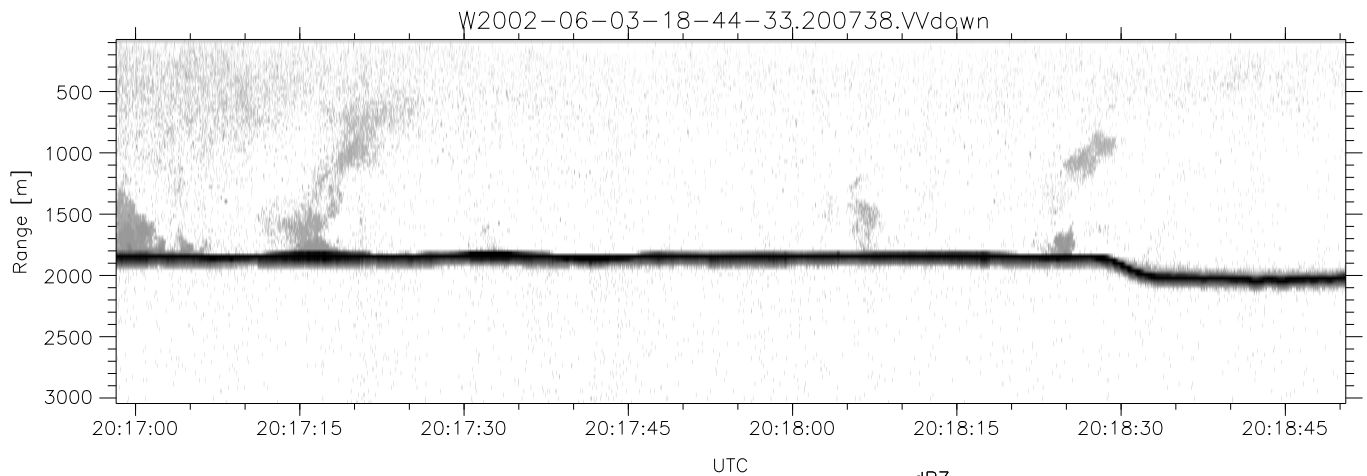
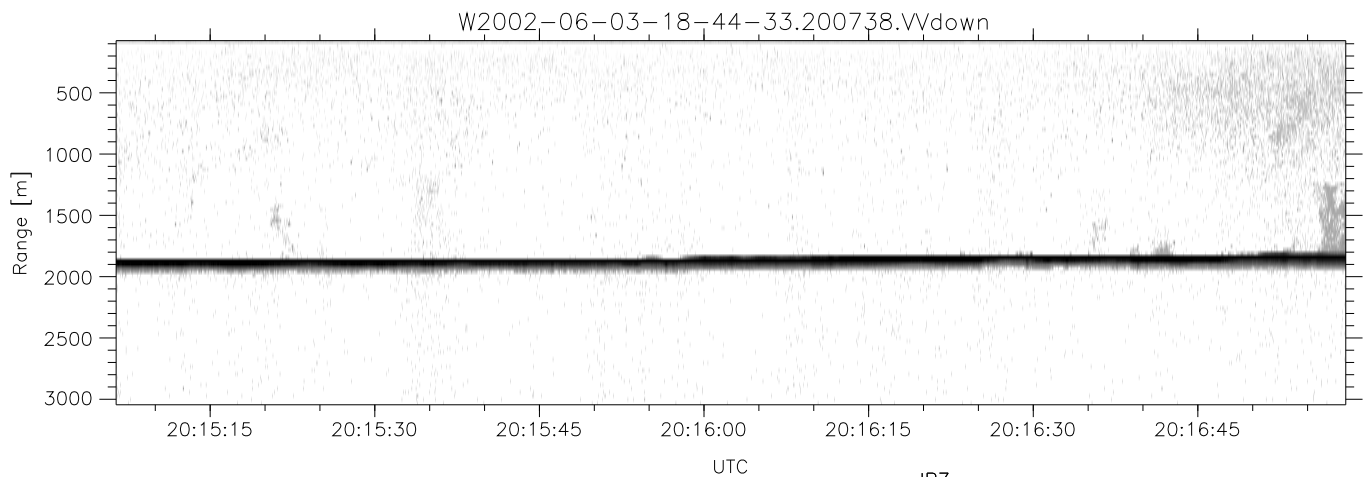
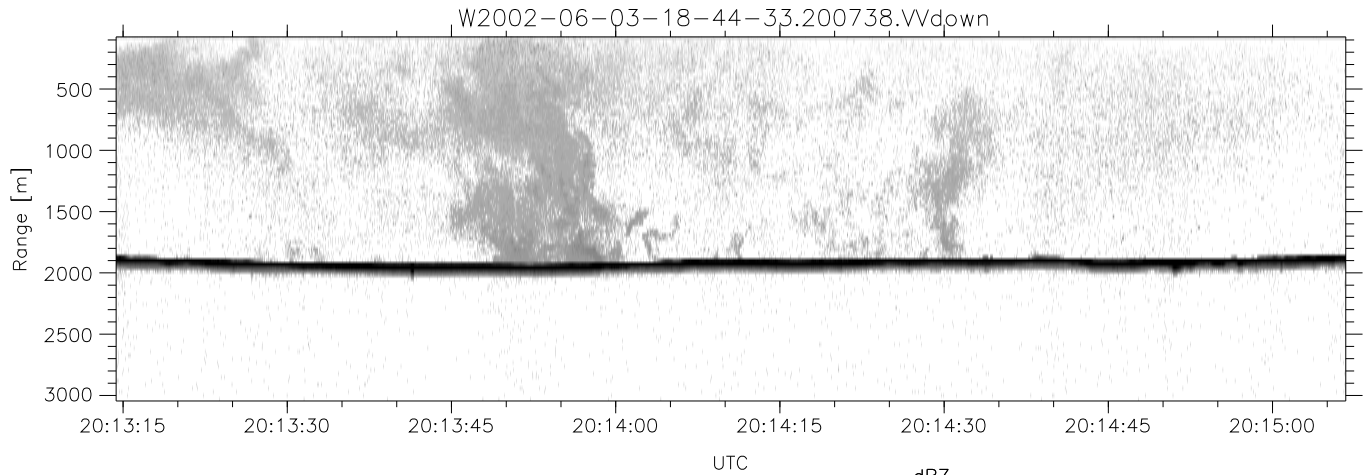


IHOP 2002 (dual-antenna config, modes 1,3,4,7) Data (cal: 55.0,50.0)

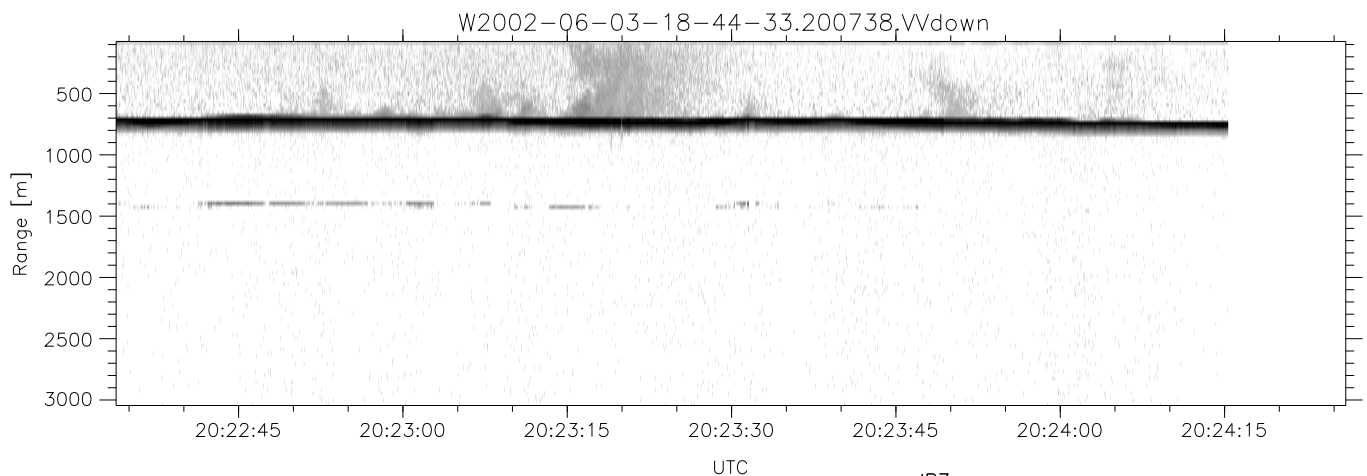
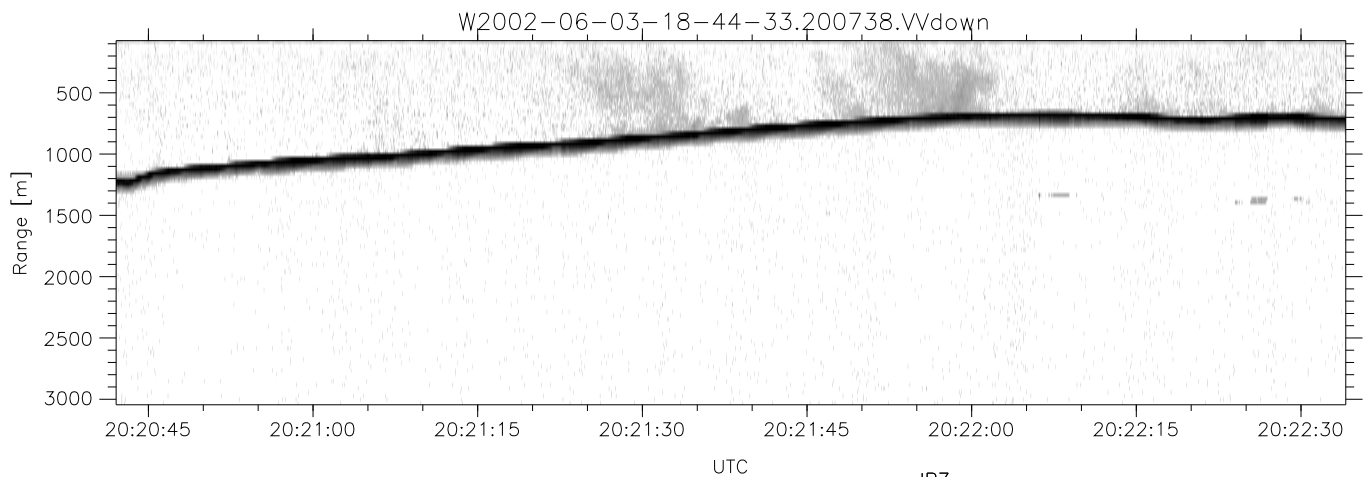
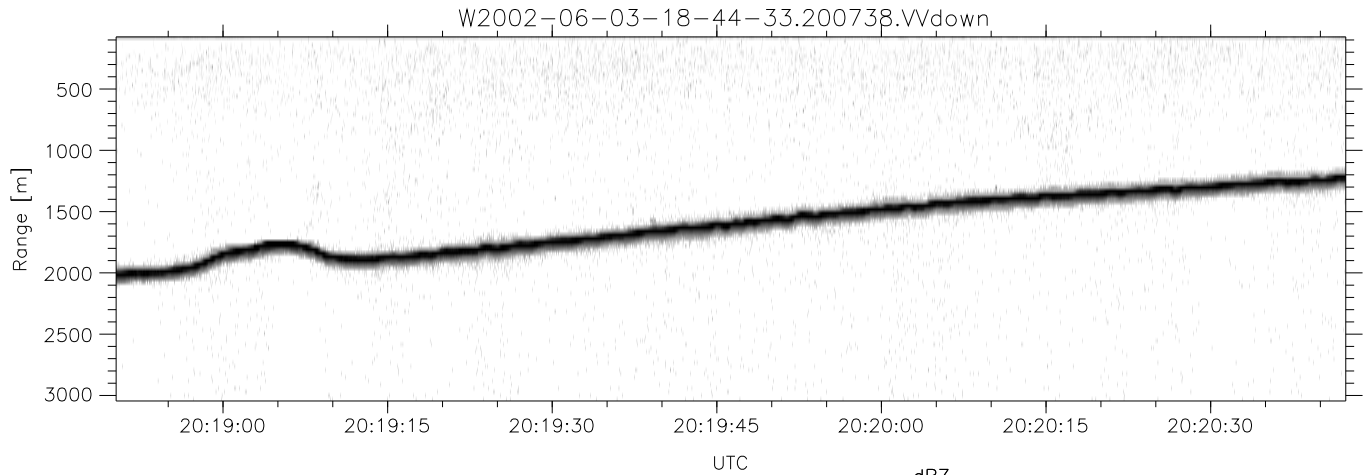
W2002-06-03-18-44-33 - PPMAG4	Min	Max	Mean	Std	Varc%	
IRIG:1,UTC: 18:44:06.73 to 20:57:30.98, Dur: 8004s	hhN (dB)	-67.53	-63.68	-65.54	-75.41	10.3
TimeLngth: 8004.24s, TimeInt: 29ms (34.1pps)	vvN (dB)	-68.29	-64.76	-66.35	-76.36	10.0
TimeCor=-13.0s, DSPDif(mn,mx,min):29,28,376	hhL (dB)	-34.17	-10.74	-19.26	-22.20	50.9
PPS(min,max,std): 23,36,2.32	vvL (dB)	-35.94	-12.76	-21.05	-20.72	107.
Prof: 1252 to 274451, NumProf(t/r): 273199/34138	ppN (m/s)	-12.60	12.72	-0.04	4.16	
ProcTime/Recs: 20:07:38-20:24:15/170690-204827	ppT (m/s)	-99.50	100.52	-0.29	32.86	
MxACQtime: 33ms; DRate: 191.1KB/s; Flags: 0, 0, 0	hh/vv (dB)	-NaN	91.43	-NaN	70.72	-149
Pulse: 275ns, IFfilt: 5.0MHz; ppPol: HH HV VV	vh/hh (dB)	-NaN	-30.62	-47.69	-41.86	382.
TxPol: HHVV, PRF: 20 10 20 10 kHz	hv/vv (dB)	-NaN	-29.84	-51.05	-44.79	422.
Range: Delay 75m, Spacing 30m, Gates 100	hn_jmp (dB)	-2.45	2.16	-0.08	-8.65	13.9
Ave. Pulses: 84, Rng/Prof Aspect@90m/s: 11.4	vn_jmp (dB)	-2.48	2.30	-0.09	-8.63	14.0



IHOP 2002 (dual-antenna config, modes 1,3,4,7) Data (cal: 55.0,50.0)

W2002-06-03-18-44-33 - PPMAG4  
 IRIG:1,UTC: 18:44:06.73 to 20:57:30.98, Dur: 8004s  
 TimeLngth: 8004.24s, TimeInt: 29ms (34.1pps)  
 TimeCor=-13.0s, DSPDif(mn,mx,min):29,28,376  
 PPS(min,max,std): 23,36,2.32  
 Prof: 1252 to 274451, NumProf(t/r): 273199/34138  
 ProcTime/Recs: 20:07:38-20:24:15/170690-204827  
 MxAcQtime: 33ms; DRate: 191.1KB/s; Flags: 0, 0, 0  
 Pulse: 275ns, IFfilt: 5.0MHz; ppPol: HH HV VV  
 TxPol: HHVV, PRF: 20 10 20 10 kHz  
 Range: Delay 75m, Spacing 30m, Gates 100  
 Ave. Pulses: 84, Rng/Prof Aspect@90m/s: 11.4

	Min	Max	Mean	Std	Varc%
hhN(dB)	-67.53	-63.68	-65.54	-75.41	10.3
vvN(dB)	-68.29	-64.76	-66.35	-76.36	10.0
hhL(dB)	-34.17	-10.74	-19.26	-22.20	50.9
vvL(dB)	-35.94	-12.76	-21.05	-20.72	107.
ppN(m/s)	-12.60	12.72	-0.04	4.16	
ppT(m/s)	-99.50	100.52	-0.29	32.86	
hh/vv(dB)	-NaN	91.43	-NaN	70.72	-149
vh/hh(dB)	-NaN	-30.62	-47.69	-41.86	382.
hv/vv(dB)	-NaN	-29.84	-51.05	-44.79	422.
hnjmp(dB)	-2.45	2.16	-0.08	-8.65	13.9
vnjmp(dB)	-2.48	2.30	-0.09	-8.63	14.0



IHOP 2002 (dual-antenna config, modes 1,3,4,7) Data (cal: 55.0,50.0)

W2002-06-03-18-44-33 - PPMAG4  
 IRIG:1,UTC: 18:44:06.73 to 20:57:30.98, Dur: 8004s  
 TimeLngth: 8004.24s, TimeInt: 29ms (34.1pps)  
 TimeCor=-13.0s, DSPDif(mn,mx,min):29,28,376  
 PPS(min,max,std): 23,36,2.32  
 Prof: 1252 to 274451, NumProf(t/r): 273199/34138  
 ProcTime/Recs: 20:07:38-20:24:15/170690-204827  
 MxACQtime: 33ms; DRate: 191.1KB/s; Flags: 0, 0, 0  
 Pulse: 275ns, IFilt: 5.0MHz; ppPol: HH HV VV  
 TxPol: HHVV, PRF: 20 10 20 10 kHz  
 Range: Delay 75m, Spacing 30m, Gates 100  
 Ave. Pulses: 84, Rng/Prof Aspect@90m/s: 11.4

	Min	Max	Mean	Std	Varc%
hhN(dB)	-67.53	-63.68	-65.54	-75.41	10.3
vvN(dB)	-68.29	-64.76	-66.35	-76.36	10.0
hhL(dB)	-34.17	-10.74	-19.26	-22.20	50.9
vvL(dB)	-35.94	-12.76	-21.05	-20.72	107.
ppN(m/s)	-12.60	12.72	-0.04	4.16	
ppT(m/s)	-99.50	100.52	-0.29	32.86	
hh/vv(dB)	-NaN	91.43	-NaN	70.72	-149
vh/hh(dB)	-NaN	-30.62	-47.69	-41.86	382.
hv/vv(dB)	-NaN	-29.84	-51.05	-44.79	422.
hnjmp(dB)	-2.45	2.16	-0.08	-8.65	13.9
vnjmp(dB)	-2.48	2.30	-0.09	-8.63	14.0