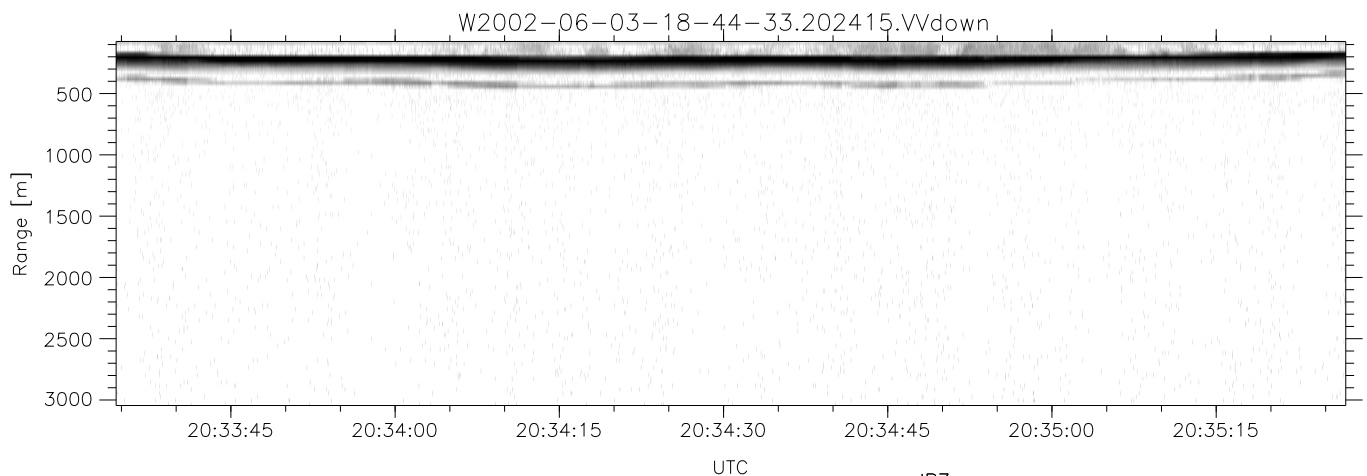
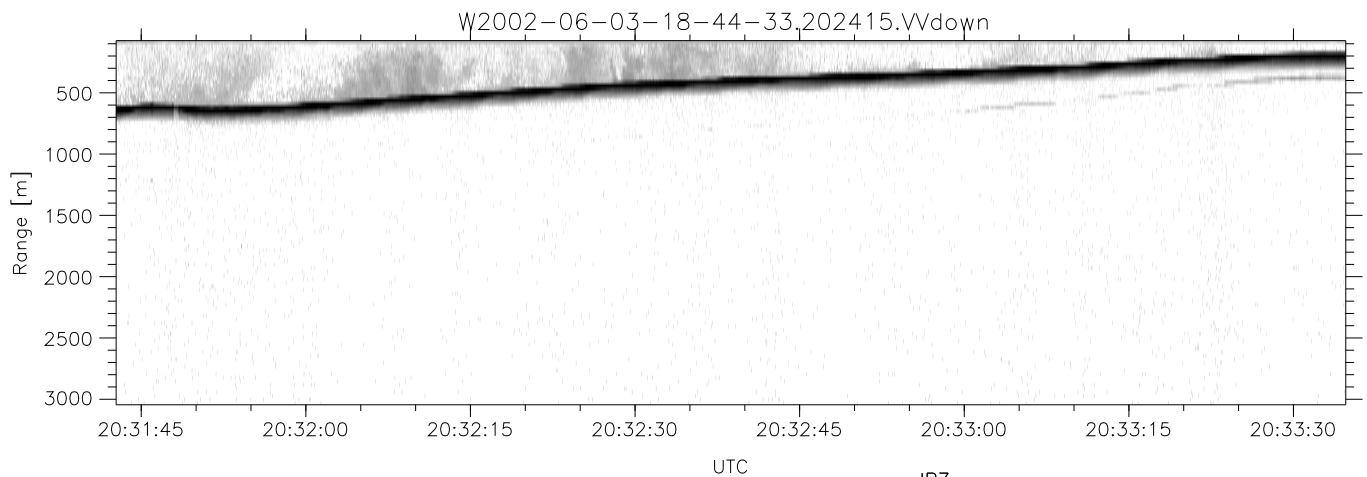
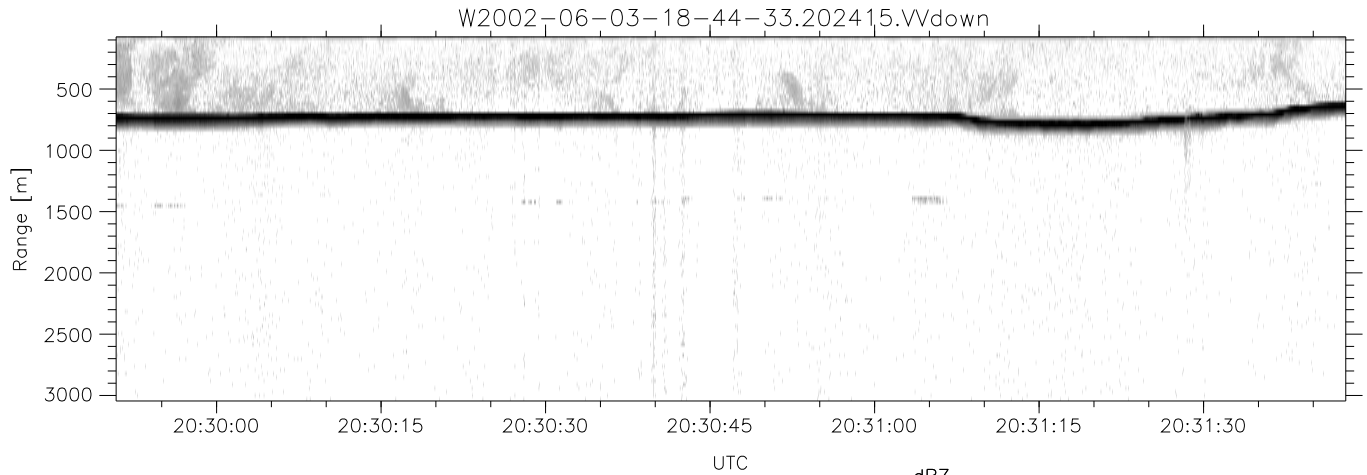


IHOP 2002 (dual-antenna config, modes 1,3,4,7) Data (cal: 55.0,50.0)

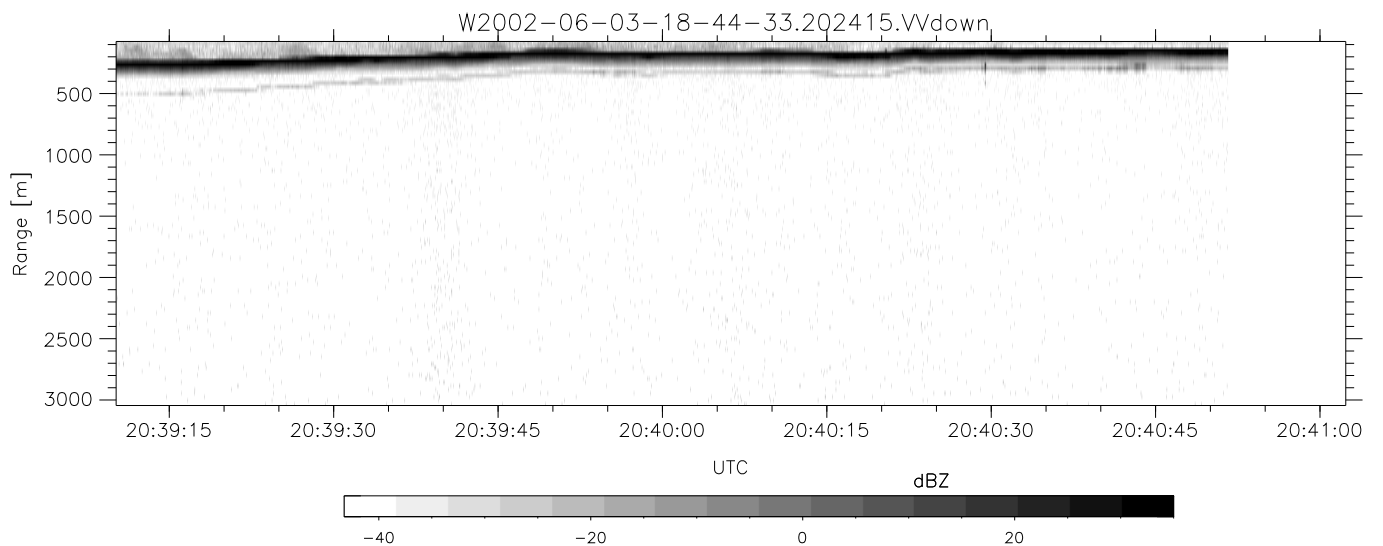
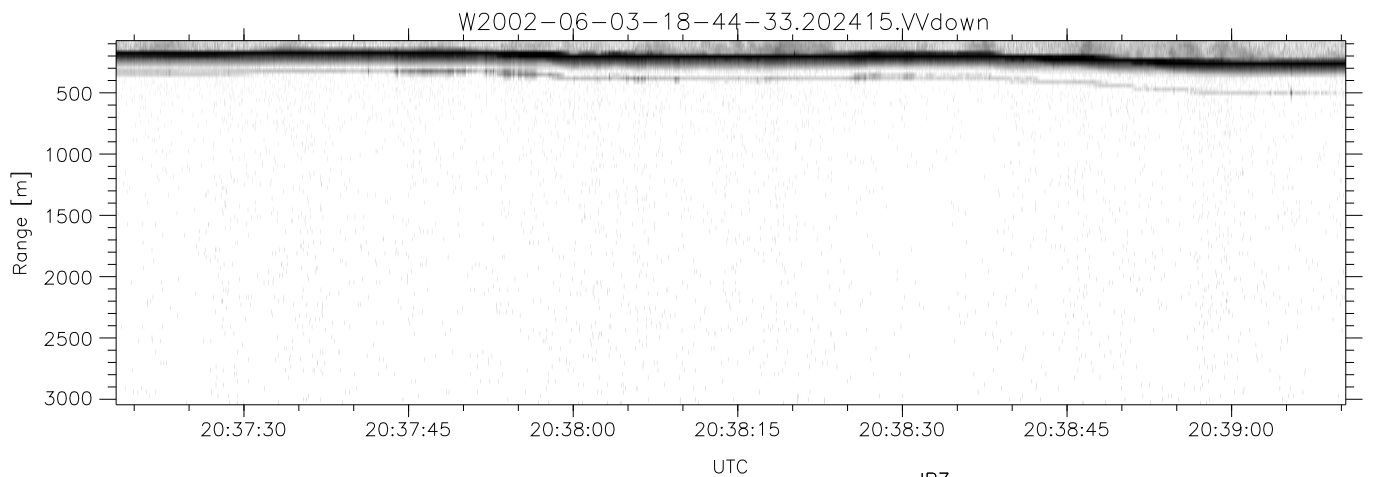
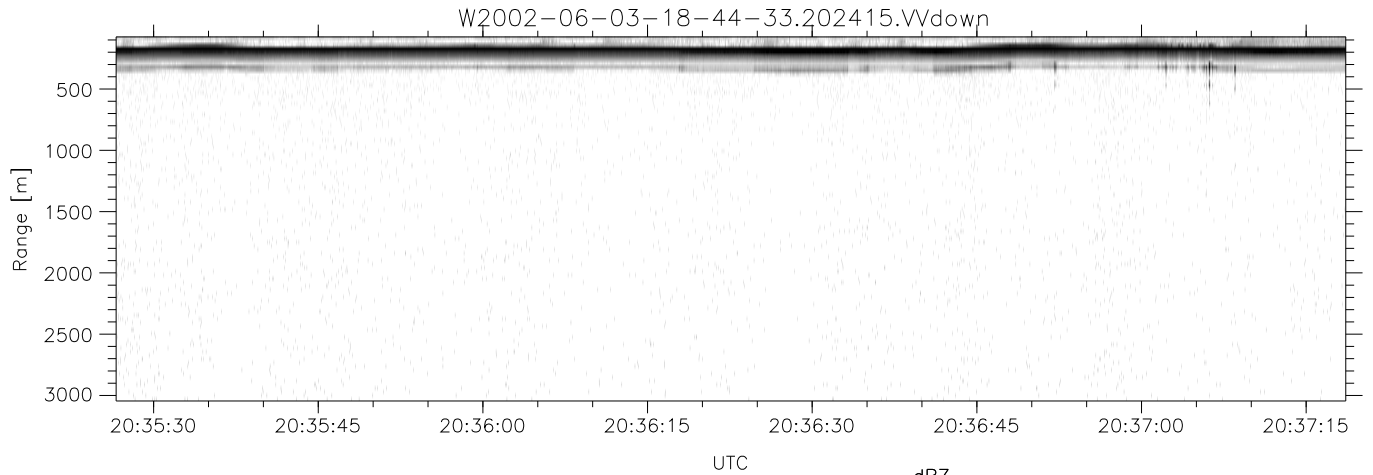
W2002-06-03-18-44-33 - PPMAG4	Min	Max	Mean	Std	Varc%	
IRIG:1,UTC: 18:44:06.73 to 20:57:30.98, Dur: 8004s	hhN (dB)	-67.53	-63.35	-65.40	-75.22	10.4
TimeLngth: 8004.24s, TimeInt: 29ms (34.1pps)	vvN (dB)	-68.47	-63.58	-66.34	-76.01	10.8
TimeCor=-13.0s, DSPDif(mn,mx,min):29,28,359	hhL (dB)	-26.98	-8.06	-12.49	-13.72	75.2
PPS(min,max,std): 23,36,2.27	vvL (dB)	-35.83	-12.59	-18.34	-18.99	86.1
Prof: 1252 to 274451, NumProf(t/r): 273199/34138	ppN (m/s)	-12.27	12.40	-0.00	4.17	
ProcTime/Recs: 20:24:15-20:40:51/204828-238965	ppT (m/s)	-96.95	97.92	-0.03	32.95	
MxAcQtime: 33ms; DRate: 191.1KB/s; Flags: 0, 0, 0	hh/vv (dB)	-NaN	88.98	41.50	71.84	1080
Pulse: 275ns, IFilt: 5.0MHz; ppPol: HH HV VV	vh/hh (dB)	-NaN	18.34	-20.23	-5.01	3321
TxPol: HHVV, PRF: 20 10 20 10 kHz	hv/vv (dB)	-NaN	-18.46	-40.83	-35.69	326.
Range: Delay 75m, Spacing 30m, Gates 100	hnjmp (dB)	-2.25	2.11	-0.08	-8.64	13.9
Ave. Pulses: 84, Rng/Prof Aspect@90m/s: 11.4	vnjmp (dB)	-2.27	2.00	-0.09	-8.62	14.0



IHOP 2002 (dual-antenna config, modes 1,3,4,7) Data (cal: 55.0,50.0)

W2002-06-03-18-44-33 - PPMAG4
 IRIG:1,UTC: 18:44:06.73 to 20:57:30.98, Dur: 8004s
 TimeLngth: 8004.24s, TimeInt: 29ms (34.1pps)
 TimeCor=-13.0s, DSPDif(mn,mx,min):29,28,359
 PPS(min,max,std): 23,36,2.27
 Prof: 1252 to 274451, NumProf(t/r): 273199/34138
 ProcTime/Recs: 20:24:15-20:40:51/204828-238965
 MxACQtime: 33ms; DRate: 191.1KB/s; Flags: 0, 0, 0
 Pulse: 275ns, IFilt: 5.0MHz; ppPol: HH HV VV
 TxPol: HHVV, PRF: 20 10 20 10 kHz
 Range: Delay 75m, Spacing 30m, Gates 100
 Ave. Pulses: 84, Rng/Prof Aspect@90m/s: 11.4

	Min	Max	Mean	Std	Varc%
hhN(dB)	-67.53	-63.35	-65.40	-75.22	10.4
vvN(dB)	-68.47	-63.58	-66.34	-76.01	10.8
hhL(dB)	-26.98	-8.06	-12.49	-13.72	75.2
vvL(dB)	-35.83	-12.59	-18.34	-18.99	86.1
ppN(m/s)	-12.27	12.40	-0.00	4.17	
ppT(m/s)	-96.95	97.92	-0.03	32.95	
hh/vv(dB)	-NaN	88.98	41.50	71.84	1080
vh/hh(dB)	-NaN	18.34	-20.23	-5.01	3321
hv/vv(dB)	-NaN	-18.46	-40.83	-35.69	326.
hnjmp(dB)	-2.25	2.11	-0.08	-8.64	13.9
vnjmp(dB)	-2.27	2.00	-0.09	-8.62	14.0



IHOP 2002 (dual-antenna config, modes 1,3,4,7) Data (cal: 55.0,50.0)

W2002-06-03-18-44-33 - PPMAG4	Min	Max	Mean	Std	Varc%
IRIG:1,UTC: 18:44:06.73 to 20:57:30.98, Dur: 8004s	-67.53	-63.35	-65.40	-75.22	10.4
TimeLngth: 8004.24s, TimeInt: 29ms (34.1pps)	-68.47	-63.58	-66.34	-76.01	10.8
TimeCor=-13.0s, DSPDif(mn,mx,min):29,28,359	-26.98	-8.06	-12.49	-13.72	75.2
PPS(min,max,std): 23,36,2.27	-35.83	-12.59	-18.34	-18.99	86.1
Prof: 1252 to 274451, NumProf(t/r): 273199/34138	ppN(m/s)	-12.27	12.40	-0.00	4.17
ProcTime/Recs: 20:24:15-20:40:51/204828-238965	ppT(m/s)	-96.95	97.92	-0.03	32.95
MxACQtime: 33ms; DRate: 191.1KB/s; Flags: 0, 0, 0	hh/vv(dB)	-NaN	88.98	41.50	71.84 1080
Pulse: 275ns, IFilt: 5.0MHz; ppPol: HH HV VV	vh/hh(dB)	-NaN	18.34	-20.23	-5.01 3321
TxPol: HHVV, PRF: 20 10 20 10 kHz	hv/vv(dB)	-NaN	-18.46	-40.83	-35.69 326.
Range: Delay 75m, Spacing 30m, Gates 100	hnjmp(dB)	-2.25	2.11	-0.08	-8.64 13.9
Ave. Pulses: 84, Rng/Prof Aspect@90m/s: 11.4	vnjmp(dB)	-2.27	2.00	-0.09	-8.62 14.0