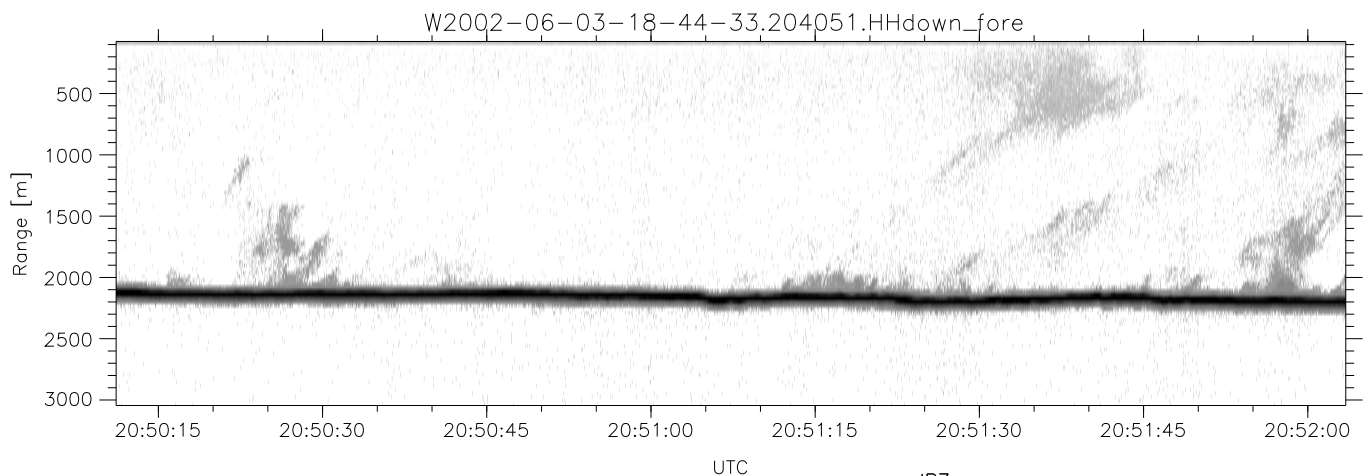
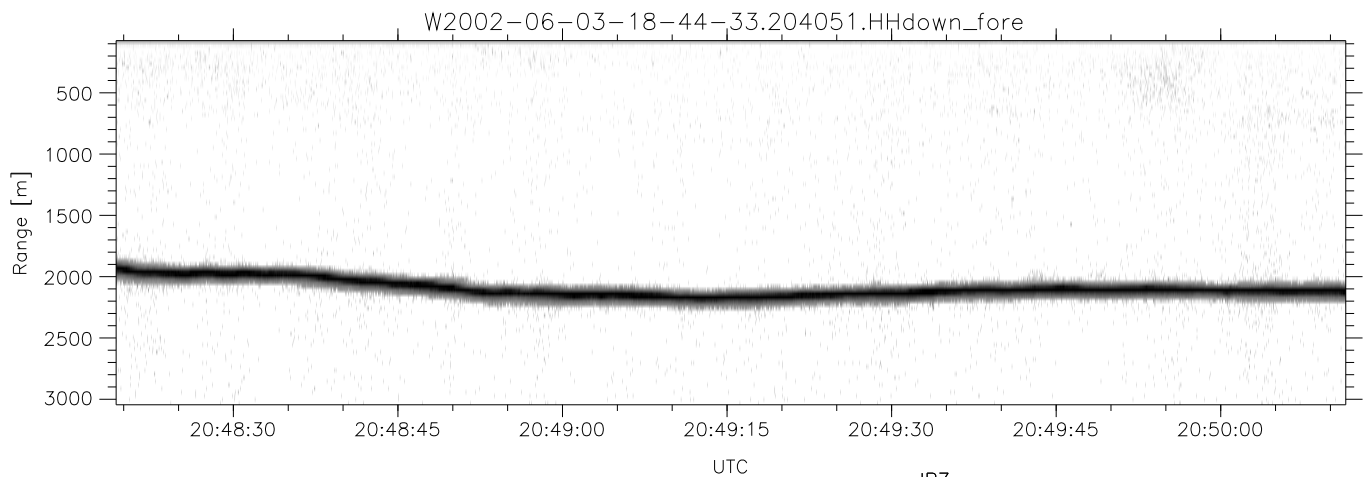
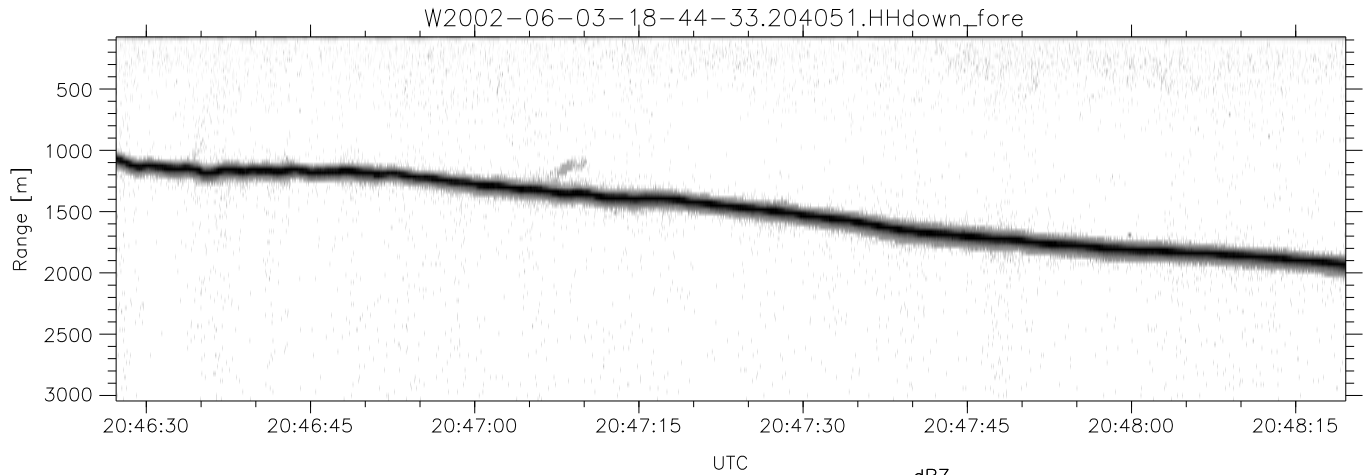


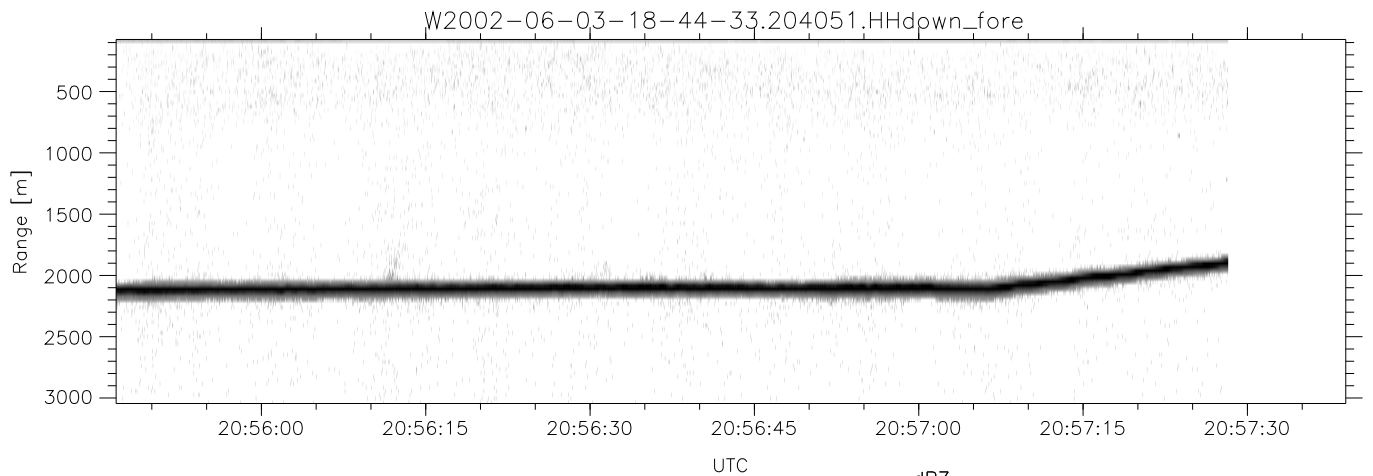
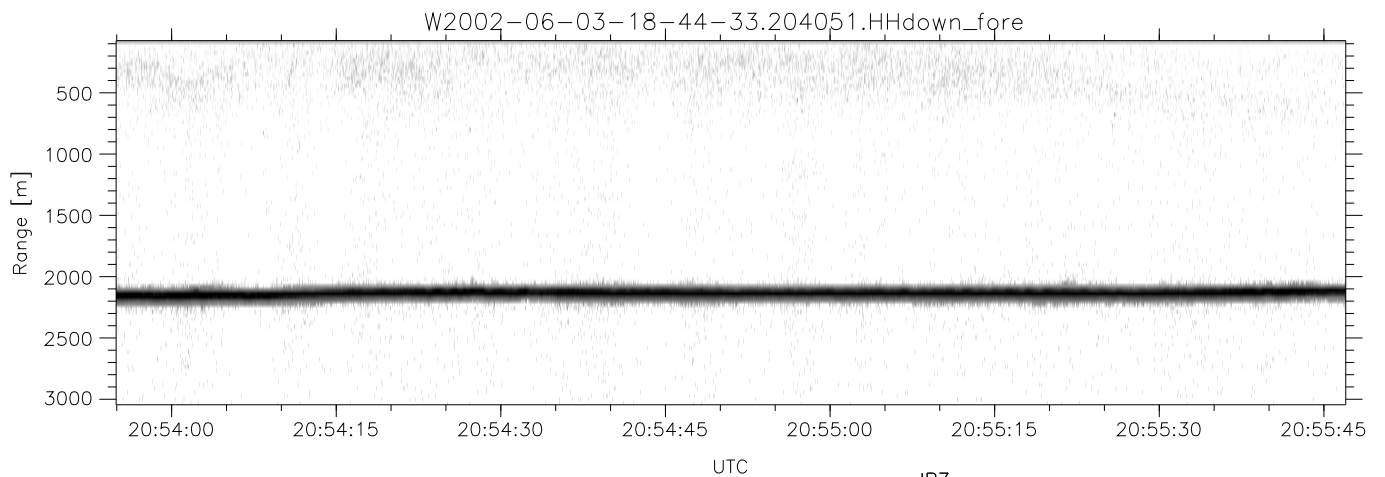
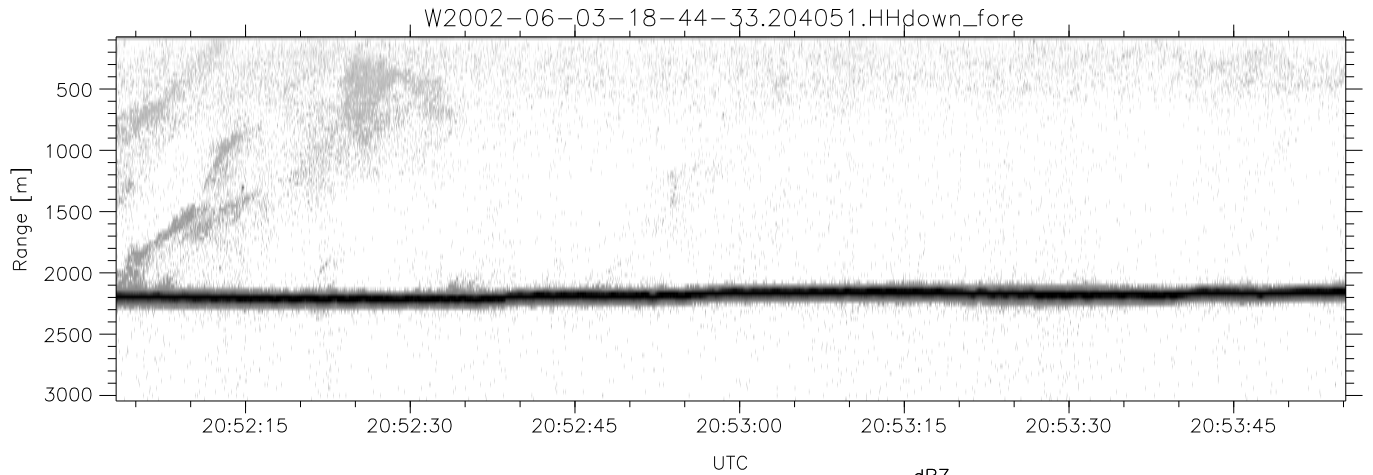
IHOP 2002 (dual-antenna config, modes 1,3,4,7) Data (cal: 55.0,50.0)

W2002-06-03-18-44-33 - PPMAG4	Min	Max	Mean	Std	Varc%	
IRIG:1,UTC: 18:44:06.73 to 20:57:30.98, Dur: 8004s	hhN (dB)	-67.52	-63.29	-65.65	-75.55	10.2
TimeLngth: 8004.24s, TimeInt: 29ms (34.1pps)	vvN (dB)	-68.18	-63.20	-66.40	-76.01	10.9
TimeCor=-13.0s, DSPDif(mn,mx,min):29,28,383	hhL (dB)	-25.03	-8.16	-12.77	-14.16	72.6
PPS(min,max,std): 23,36,2.27	vvL (dB)	-37.69	-13.90	-22.58	-22.95	91.8
Prof: 1252 to 274451, NumProf(t/r): 273199/34138	ppN (m/s)	-12.60	12.54	-0.00	4.14	
ProcTime/Recs: 20:40:51-20:57:28/238966-273103	ppT (m/s)	-99.57	99.04	-0.01	32.72	
MxAcQtime: 33ms; DRate: 191.1KB/s; Flags: 0, 0, 0	hh/vv (dB)	-NaN	101.22	-NaN	79.01	-169
Pulse: 275ns, IFilt: 5.0MHz; ppPol: HH HV VV	vh/hh (dB)	-NaN	12.09	-22.73	-9.90	1917
TxPol: HHVV, PRF: 20 10 20 10 kHz	hv/vv (dB)	-NaN	-16.09	-44.02	-36.33	586.
Range: Delay 75m, Spacing 30m, Gates 100	hnjmp (dB)	-2.23	2.50	-0.08	-8.62	14.0
Ave. Pulses: 84, Rng/Prof Aspect@90m/s: 11.4	vnjmp (dB)	-2.62	2.20	-0.09	-8.55	14.2



IHOP 2002 (dual-antenna config, modes 1,3,4,7) Data (cal: 55.0,50.0)

W2002-06-03-18-44-33 - PPMAG4	Min	Max	Mean	Std	Varc%	
IRIG:1,UTC: 18:44:06.73 to 20:57:30.98, Dur: 8004s	hhN (dB)	-67.52	-63.29	-65.65	-75.55	10.2
TimeLngth: 8004.24s, TimeInt: 29ms (34.1pps)	vvN (dB)	-68.18	-63.20	-66.40	-76.01	10.9
TimeCor=-13.0s, DSPDif(mn,mx,min):29,28,383	hhL (dB)	-25.03	-8.16	-12.77	-14.16	72.6
PPS(min,max,std): 23,36,2.27	vvL (dB)	-37.69	-13.90	-22.58	-22.95	91.8
Prof: 1252 to 274451, NumProf(t/r): 273199/34138	ppN (m/s)	-12.60	12.54	-0.00	4.14	
ProcTime/Recs: 20:40:51-20:57:28/238966-273103	ppT (m/s)	-99.57	99.04	-0.01	32.72	
MxAcQtime: 33ms; DRate: 191.1KB/s; Flags: 0, 0, 0	hh/vv (dB)	-NaN	101.22	-NaN	79.01	-169
Pulse: 275ns, IFfilt: 5.0MHz; ppPol: HH HV VV	vh/hh (dB)	-NaN	12.09	-22.73	-9.90	1917
TxPol: HHVV, PRF: 20 10 20 10 kHz	hv/vv (dB)	-NaN	-16.09	-44.02	-36.33	586.
Range: Delay 75m, Spacing 30m, Gates 100	hnjmp (dB)	-2.23	2.50	-0.08	-8.62	14.0
Ave. Pulses: 84, Rng/Prof Aspect@90m/s: 11.4	vnjmp (dB)	-2.62	2.20	-0.09	-8.55	14.2



IHOP 2002 (dual-antenna config, modes 1,3,4,7) Data (cal: 55.0,50.0)

W2002-06-03-18-44-33 - PPMAG4		Min	Max	Mean	Std	Varc%
IRIG:1,UTC: 18:44:06.73 to 20:57:30.98, Dur: 8004s	hhN (dB)	-67.52	-63.29	-65.65	-75.55	10.2
TimeLngth: 8004.24s, TimeInt: 29ms (34.1pps)	vvN (dB)	-68.18	-63.20	-66.40	-76.01	10.9
TimeCor=-13.0s, DSPDif(mn,mx,min):29,28,383	hhL (dB)	-25.03	-8.16	-12.77	-14.16	72.6
PPS(min,max,std): 23,36,2.27	vvL (dB)	-37.69	-13.90	-22.58	-22.95	91.8
Prof: 1252 to 274451, NumProf(t/r): 273199/34138	ppN (m/s)	-12.60	12.54	-0.00	4.14	
ProcTime/Recs: 20:40:51-20:57:28/238966-273103	ppT (m/s)	-99.57	99.04	-0.01	32.72	
MxAcQtime: 33ms; DRate: 191.1KB/s; Flags: 0, 0, 0	hh/vv (dB)	-NaN	101.22	-NaN	79.01	-169
Pulse: 275ns, IFilt: 5.0MHz; ppPol: HH HV VV	vh/hh (dB)	-NaN	12.09	-22.73	-9.90	1917
TxPol: HHVV, PRF: 20 10 20 10 kHz	hv/vv (dB)	-NaN	-16.09	-44.02	-36.33	586.
Range: Delay 75m, Spacing 30m, Gates 100	hnjmp (dB)	-2.23	2.50	-0.08	-8.62	14.0
Ave. Pulses: 84, Rng/Prof Aspect@90m/s: 11.4	vnjmp (dB)	-2.62	2.20	-0.09	-8.55	14.2