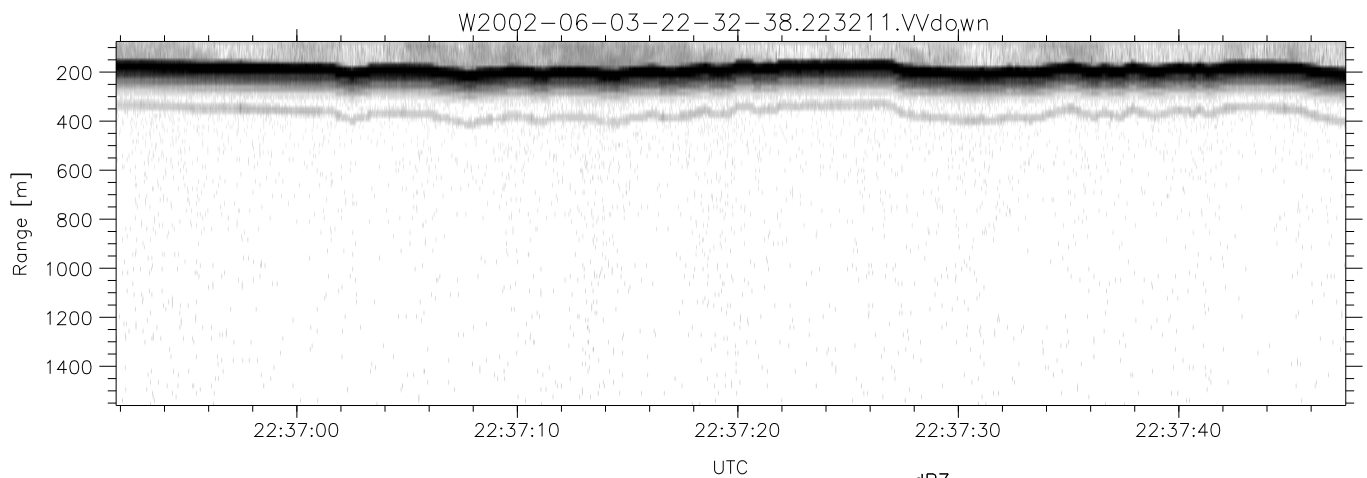
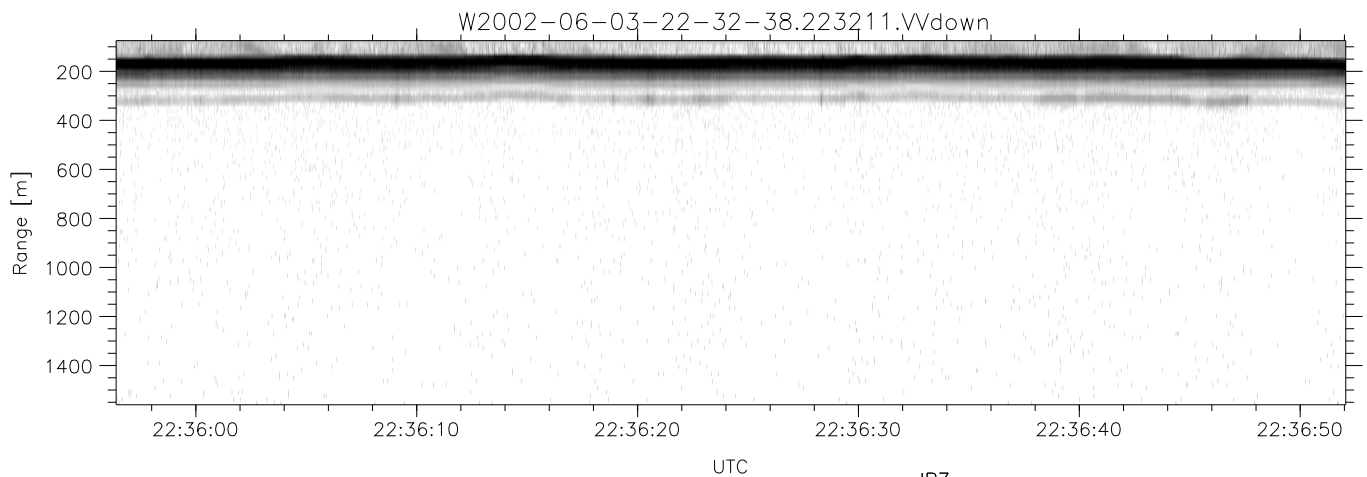
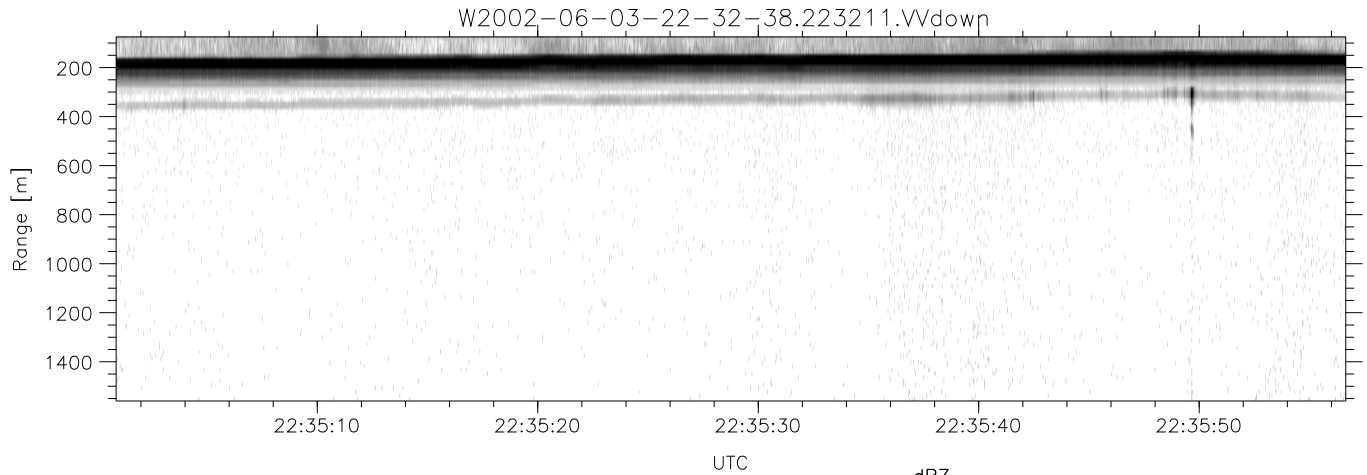


IHOP 2002 (dual-antenna config, modes 1,3,4,7) Data (cal: 49.0,50.0)

W2002-06-03-22-32-38 - PPMAG4
 IRIG:1,UTC: 22:32:11.35 to 23:07:17.43, Dur: 2106s
 TimeLngth: 2106.08s, TimeInt: 29ms (34.4pps)
 TimeCor=-13.0s, DSPDif(mn,mx,min):29,-971,2038
 PPS(min,max,std): 0,107,16.49
 Prof: 1600 to 73980, NumProf(t/r): 72380/17069
 ProcTime/Recs: 22:32:11-22:40:26/0-17068
 MxACQtime: 33ms; DRate: 192.4KB/s; Flags: 0, 0, 0
 Pulse: 275ns, IFilt: 5.0MHz; ppPol: HH HV VV
 TxPol: HHVV, PRF: 20 10 20 10 kHz
 Range: Delay 75m, Spacing 15m, Gates 100
 Ave. Pulses: 84, Rng/Prof Aspect@90m/s: 5.7

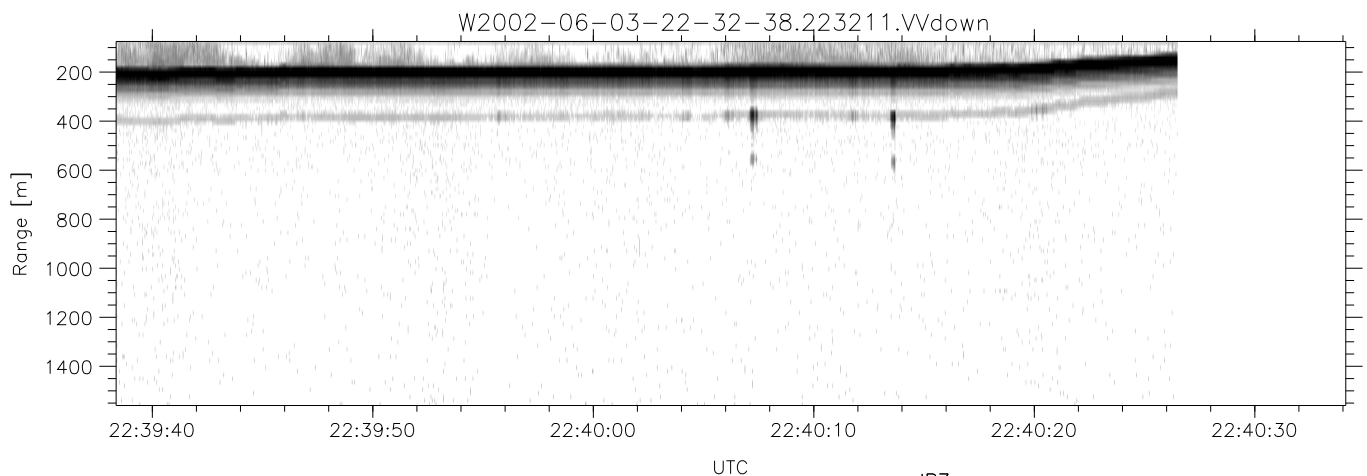
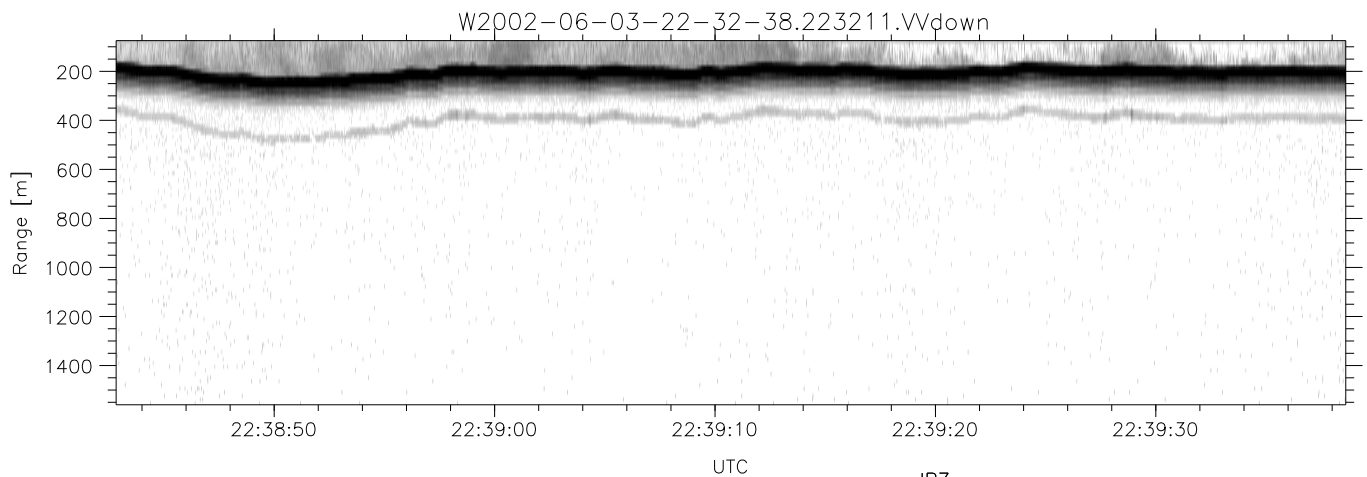
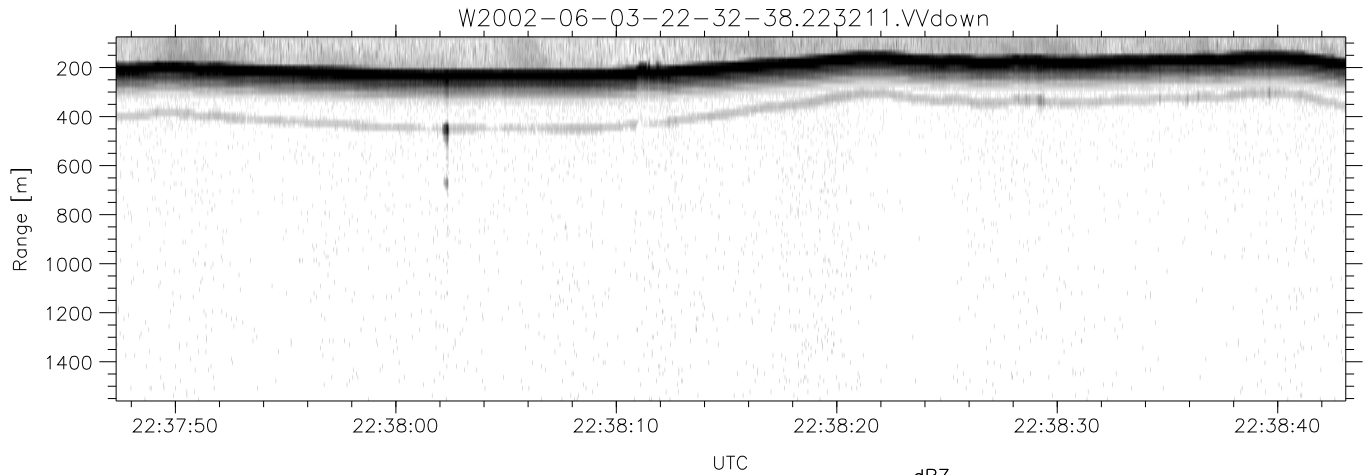
	Min	Max	Mean	Std	Varc%
hhN(dB)	-67.37	-64.02	-65.53	-75.61	9.8
vvN(dB)	-68.05	-64.58	-66.15	-76.14	10.0
hhL(dB)	-14.23	-6.56	-9.61	-16.49	20.5
vvL(dB)	-30.51	-13.81	-17.82	-21.56	42.2
ppN(m/s)	-12.61	12.71	0.00	4.18	
ppT(m/s)	-99.61	100.38	0.03	33.03	
hh/vv(dB)	-NaN	47.29	10.43	28.53	6445
vh/hh(dB)	-NaN	0.99	-14.83	-8.06	475.
hv/vv(dB)	-NaN	-30.87	-49.13	-45.06	255.
hnjmp(dB)	-2.26	2.28	-0.08	-8.69	13.8
vnjmp(dB)	-2.28	2.27	-0.09	-8.61	14.1



IHOP 2002 (dual-antenna config, modes 1,3,4,7) Data (cal: 49.0,50.0)

W2002-06-03-22-32-38 - PPMAG4
 IRIG:1,UTC: 22:32:11.35 to 23:07:17.43, Dur: 2106s
 TimeLngth: 2106.08s, TimeInt: 29ms (34.4pps)
 TimeCor=-13.0s, DSPDif(mn,mx,min):29,-971,2038
 PPS(min,max,std): 0,107,16.49
 Prof: 1600 to 73980, NumProf(t/r): 72380/17069
 ProcTime/Recs: 22:32:11-22:40:26/0-17068
 MxACQtime: 33ms; DRate: 192.4KB/s; Flags: 0, 0, 0
 Pulse: 275ns, IFfilt: 5.0MHz; ppPol: HH HV VV
 TxPol: HHVV, PRF: 20 10 20 10 kHz
 Range: Delay 75m, Spacing 15m, Gates 100
 Ave. Pulses: 84, Rng/Prof Aspect@90m/s: 5.7

	Min	Max	Mean	Std	Varc%
hhN(dB)	-67.37	-64.02	-65.53	-75.61	9.8
vvN(dB)	-68.05	-64.58	-66.15	-76.14	10.0
hhL(dB)	-14.23	-6.56	-9.61	-16.49	20.5
vvL(dB)	-30.51	-13.81	-17.82	-21.56	42.2
ppN(m/s)	-12.61	12.71	0.00	4.18	
ppT(m/s)	-99.61	100.38	0.03	33.03	
hh/vv(dB)	-NaN	47.29	10.43	28.53	6445
vh/hh(dB)	-NaN	0.99	-14.83	-8.06	475.
hv/vv(dB)	-NaN	-30.87	-49.13	-45.06	255.
hnjmp(dB)	-2.26	2.28	-0.08	-8.69	13.8
vnjmp(dB)	-2.28	2.27	-0.09	-8.61	14.1



IHOP 2002 (dual-antenna config, modes 1,3,4,7) Data (cal: 49.0,50.0)

W2002-06-03-22-32-38 - PPMAG4
 IRIG:1,UTC: 22:32:11.35 to 23:07:17.43, Dur: 2106s
 TimeLngth: 2106.08s, TimeInt: 29ms (34.4pps)
 TimeCor=-13.0s, DSPDif(mn,mx,min):29,-971,2038
 PPS(min,max,std): 0,107,16.49
 Prof: 1600 to 73980, NumProf(t/r): 72380/17069
 ProcTime/Recs: 22:32:11-22:40:26/0-17068
 MxACQtime: 33ms; DRate: 192.4KB/s; Flags: 0, 0, 0
 Pulse: 275ns, IFfilt: 5.0MHz; ppPol: HH HV VV
 TxPol: HHVV, PRF: 20 10 20 10 kHz
 Range: Delay 75m, Spacing 15m, Gates 100
 Ave. Pulses: 84, Rng/Prof Aspect@90m/s: 5.7

	Min	Max	Mean	Std	Varc%
hhN(dB)	-67.37	-64.02	-65.53	-75.61	9.8
vvN(dB)	-68.05	-64.58	-66.15	-76.14	10.0
hhL(dB)	-14.23	-6.56	-9.61	-16.49	20.5
vvL(dB)	-30.51	-13.81	-17.82	-21.56	42.2
ppN(m/s)	-12.61	12.71	0.00	4.18	
ppT(m/s)	-99.61	100.38	0.03	33.03	
hh/vv(dB)	-NaN	47.29	10.43	28.53	6445
vh/hh(dB)	-NaN	0.99	-14.83	-8.06	475.
hv/vv(dB)	-NaN	-30.87	-49.13	-45.06	255.
hn_jmp(dB)	-2.26	2.28	-0.08	-8.69	13.8
vn_jmp(dB)	-2.28	2.27	-0.09	-8.61	14.1