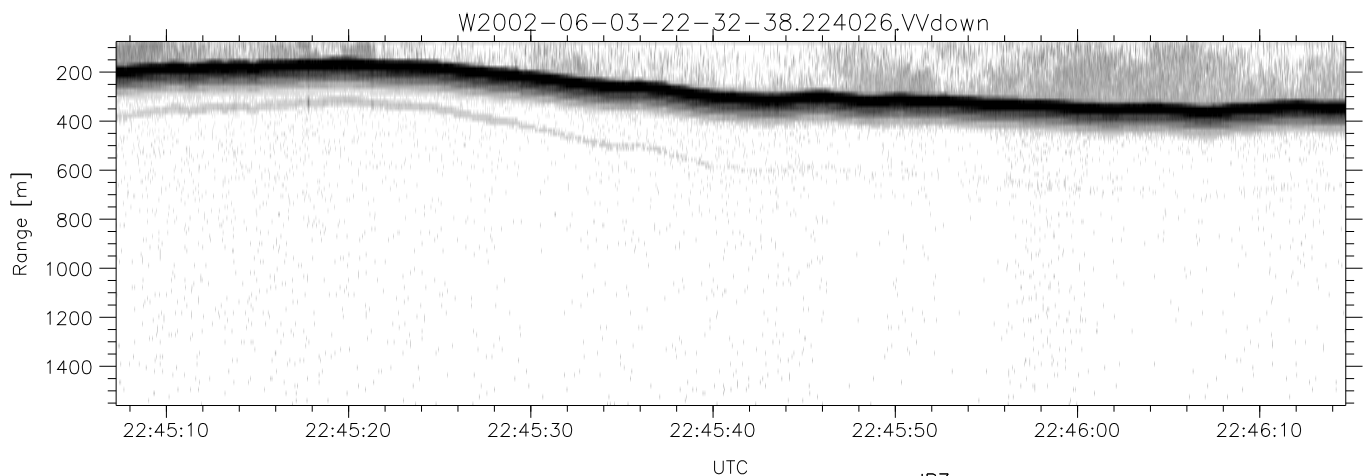
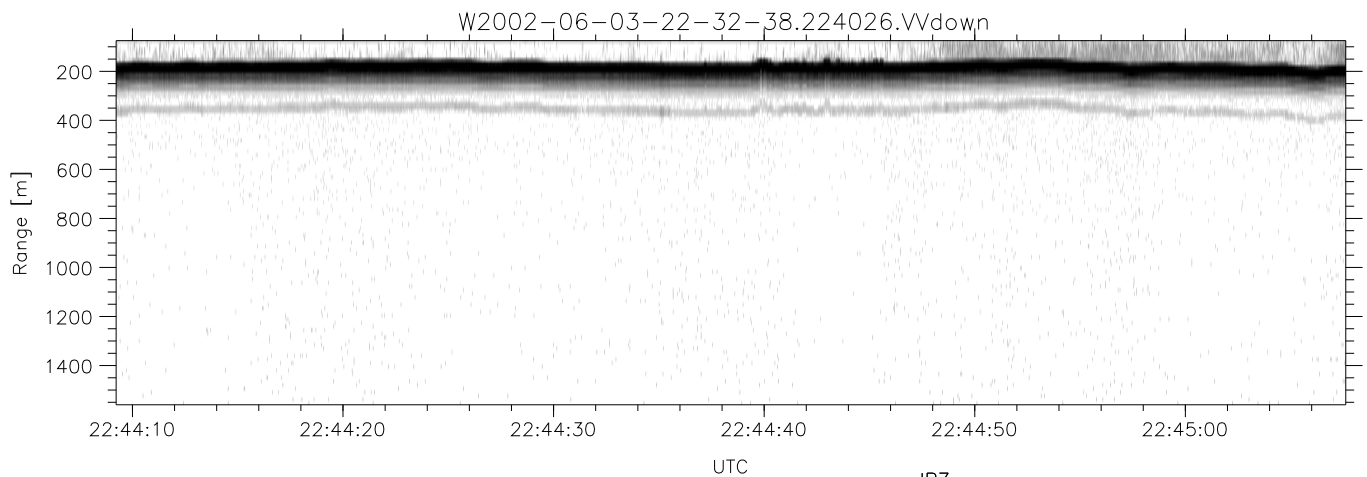
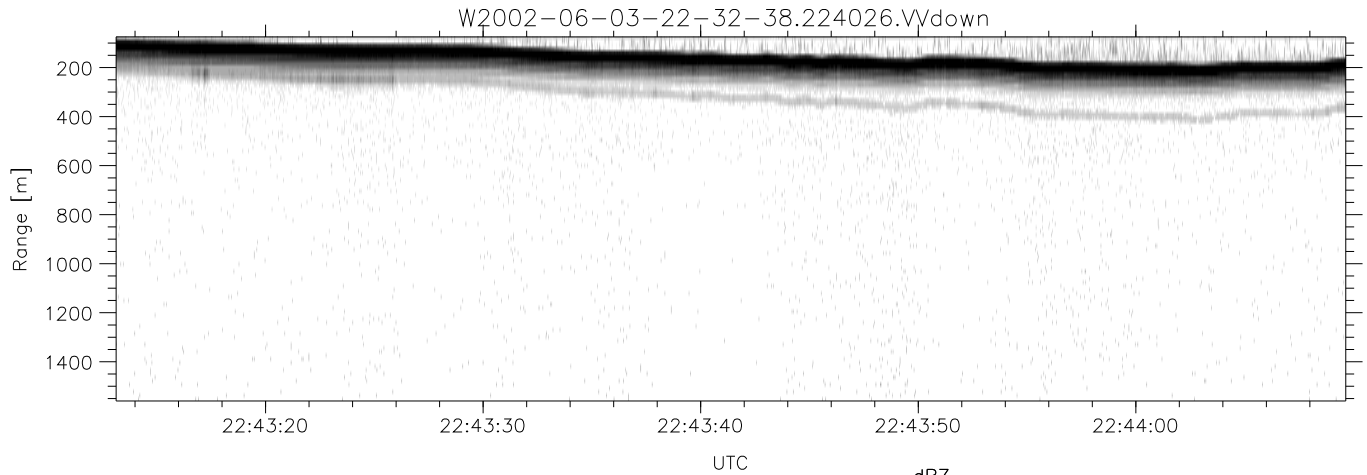


IHOP 2002 (dual-antenna config, modes 1,3,4,7) Data (cal: 49.0,50.0)

W2002-06-03-22-32-38 - PPMAG4
 IRIG:1,UTC: 22:32:11.35 to 23:07:17.43, Dur: 2106s
 TimeLngth: 2106.08s, TimeInt: 29ms (34.4pps)
 TimeCor=-13.0s, DSPDif(mn,mx,min):28,-971,2028
 PPS(min,max,std): 0,107,15.22
 Prof: 1600 to 73980, NumProf(t/r): 72380/17069
 ProcTime/Recs: 22:40:26-22:48:53/17069-34137
 MxACQtime: 33ms; DRate: 192.4KB/s; Flags: 0, 0, 0
 Pulse: 275ns, IFfilt: 5.0MHz; ppPol: HH HV VV
 TxPol: HHVV, PRF: 20 10 20 10 kHz
 Range: Delay 75m, Spacing 15m, Gates 100
 Ave. Pulses: 84, Rng/Prof Aspect@90m/s: 5.7

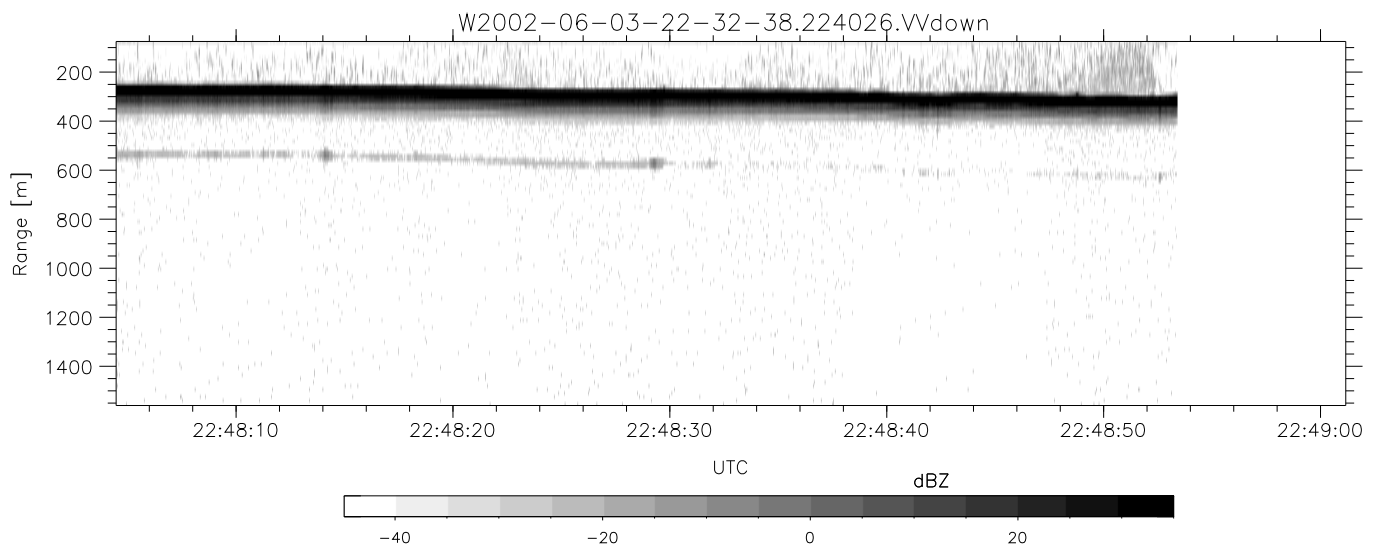
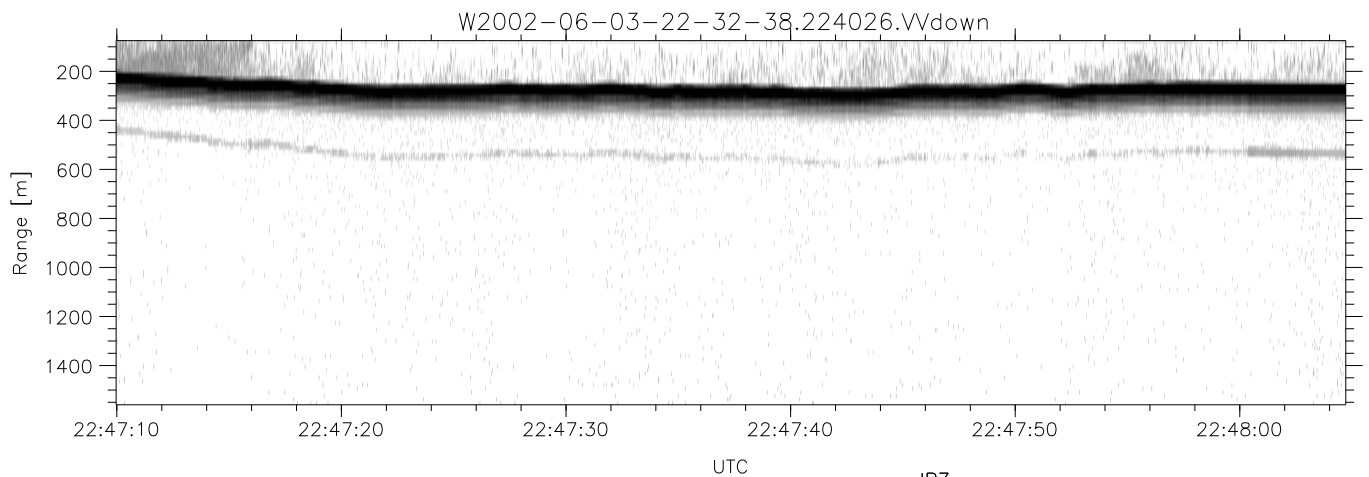
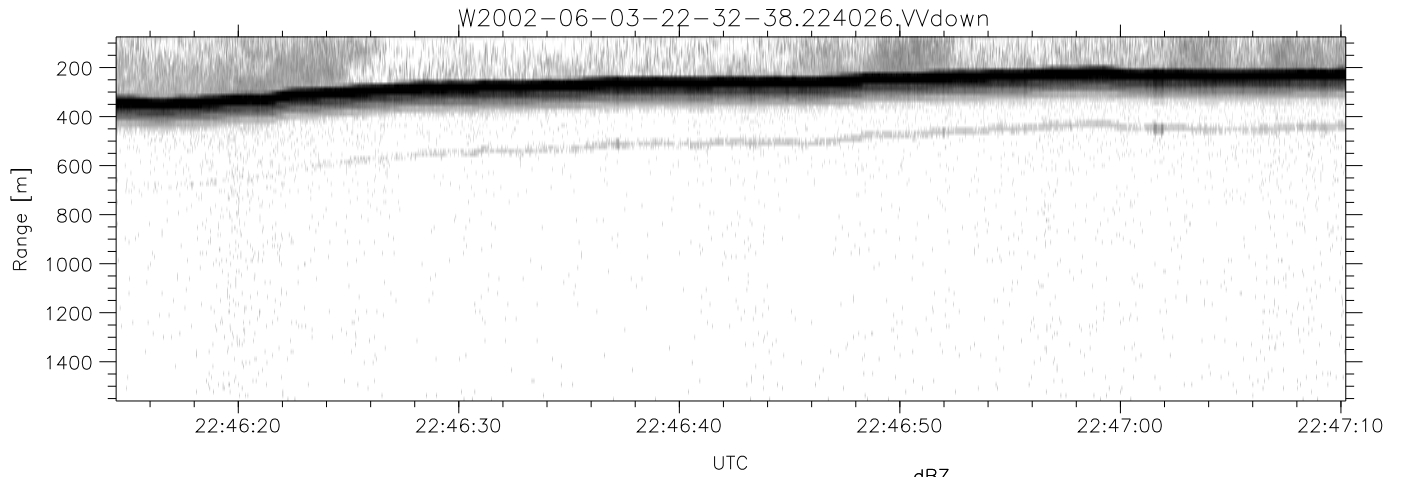
	Min	Max	Mean	Std	Varc%
hhN(dB)	-67.40	-63.86	-65.55	-75.63	9.8
vvN(dB)	-68.04	-64.16	-66.14	-76.18	9.9
hhL(dB)	-10.90	-5.75	-7.49	-15.81	14.7
vvL(dB)	-34.82	-17.21	-22.43	-24.50	62.1
ppN(m/s)	-12.02	12.53	-0.02	4.18	
ppT(m/s)	-94.99	99.01	-0.18	33.04	
hh/vv(dB)	-NaN	49.35	11.92	32.27	1084
vh/hh(dB)	-NaN	-0.83	-13.75	-8.53	333.
hv/vv(dB)	-NaN	-31.81	-48.18	-44.70	223.
hnjmp(dB)	-2.14	2.38	0.17	-8.48	13.7
vnjmp(dB)	-2.00	2.63	0.17	-8.36	14.0



IHOP 2002 (dual-antenna config, modes 1,3,4,7) Data (cal: 49.0,50.0)

W2002-06-03-22-32-38 - PPMAG4
 IRIG:1,UTC: 22:32:11.35 to 23:07:17.43, Dur: 2106s
 TimeLngth: 2106.08s, TimeInt: 29ms (34.4pps)
 TimeCor=-13.0s, DSPDif(mn,mx,min):28,-971,2028
 PPS(min,max,std): 0,107,15.22
 Prof: 1600 to 73980, NumProf(t/r): 72380/17069
 ProcTime/Recs: 22:40:26-22:48:53/17069-34137
 MxACQtime: 33ms; DRate: 192.4KB/s; Flags: 0, 0, 0
 Pulse: 275ns, IFfilt: 5.0MHz; ppPol: HH HV VV
 TxPol: HHVV, PRF: 20 10 20 10 kHz
 Range: Delay 75m, Spacing 15m, Gates 100
 Ave. Pulses: 84, Rng/Prof Aspect@90m/s: 5.7

	Min	Max	Mean	Std	Varc%
hhN(dB)	-67.40	-63.86	-65.55	-75.63	9.8
vvN(dB)	-68.04	-64.16	-66.14	-76.18	9.9
hhL(dB)	-10.90	-5.75	-7.49	-15.81	14.7
vvL(dB)	-34.82	-17.21	-22.43	-24.50	62.1
ppN(m/s)	-12.02	12.53	-0.02	4.18	
ppT(m/s)	-94.99	99.01	-0.18	33.04	
hh/vv(dB)	-NaN	49.35	11.92	32.27	1084
vh/hh(dB)	-NaN	-0.83	-13.75	-8.53	333.
hv/vv(dB)	-NaN	-31.81	-48.18	-44.70	223.
hnjmp(dB)	-2.14	2.38	0.17	-8.48	13.7
vnjmp(dB)	-2.00	2.63	0.17	-8.36	14.0



IHOP 2002 (dual-antenna config, modes 1,3,4,7) Data (cal: 49.0,50.0)

W2002-06-03-22-32-38 - PPMAG4
 IRIG:1,UTC: 22:32:11.35 to 23:07:17.43, Dur: 2106s
 TimeLngth: 2106.08s, TimeInt: 29ms (34.4pps)
 TimeCor=-13.0s, DSPDif(mn,mx,min):28,-971,2028
 PPS(min,max,std): 0,107,15.22
 Prof: 1600 to 73980, NumProf(t/r): 72380/17069
 ProcTime/Recs: 22:40:26-22:48:53/17069-34137
 MxACQtime: 33ms; DRate: 192.4KB/s; Flags: 0, 0, 0
 Pulse: 275ns, IFfilt: 5.0MHz; ppPol: HH HV VV
 TxPol: HHVV, PRF: 20 10 20 10 kHz
 Range: Delay 75m, Spacing 15m, Gates 100
 Ave. Pulses: 84, Rng/Prof Aspect@90m/s: 5.7

	Min	Max	Mean	Std	Varc%
hhN(dB)	-67.40	-63.86	-65.55	-75.63	9.8
vvN(dB)	-68.04	-64.16	-66.14	-76.18	9.9
hhL(dB)	-10.90	-5.75	-7.49	-15.81	14.7
vvL(dB)	-34.82	-17.21	-22.43	-24.50	62.1
ppN(m/s)	-12.02	12.53	-0.02	4.18	
ppT(m/s)	-94.99	99.01	-0.18	33.04	
hh/vv(dB)	-NaN	49.35	11.92	32.27	1084
vh/hh(dB)	-NaN	-0.83	-13.75	-8.53	333.
hv/vv(dB)	-NaN	-31.81	-48.18	-44.70	223.
hnjmp(dB)	-2.14	2.38	0.17	-8.48	13.7
vnjmp(dB)	-2.00	2.63	0.17	-8.36	14.0