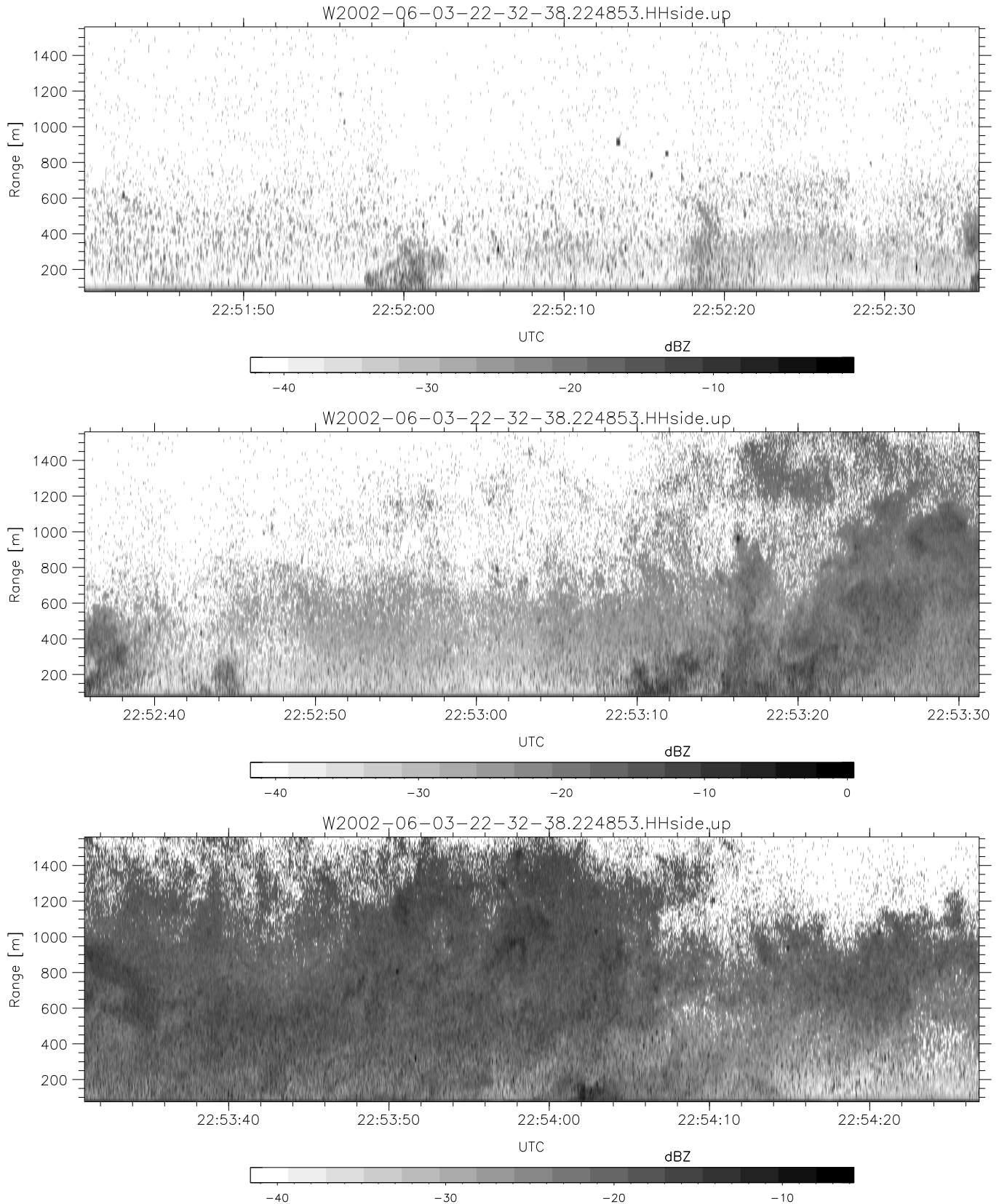


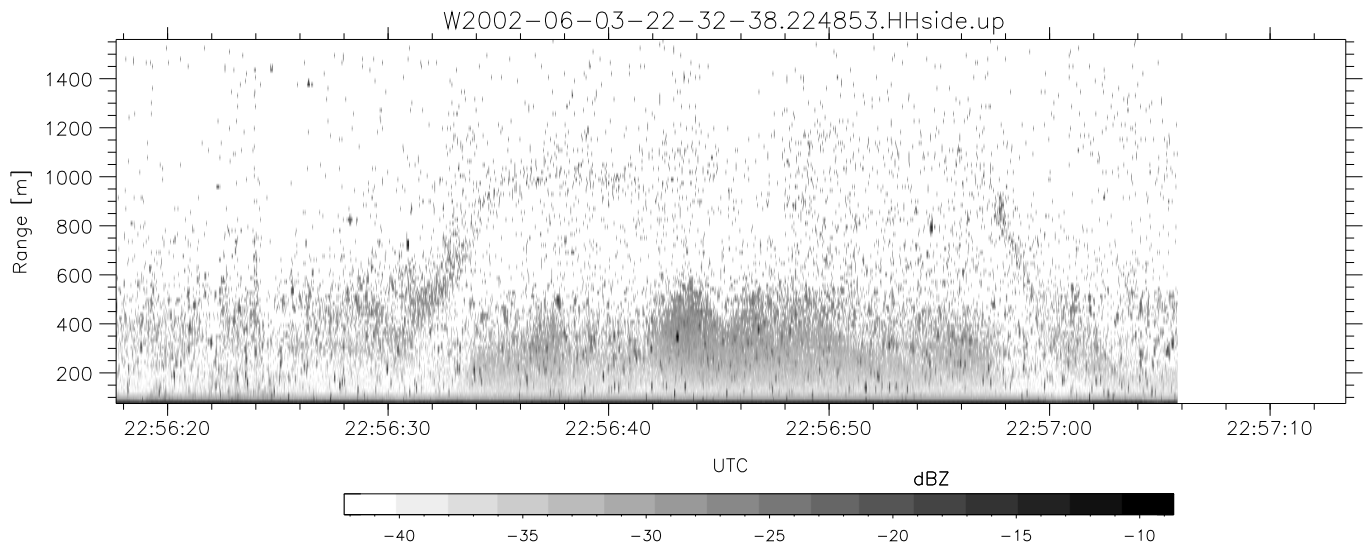
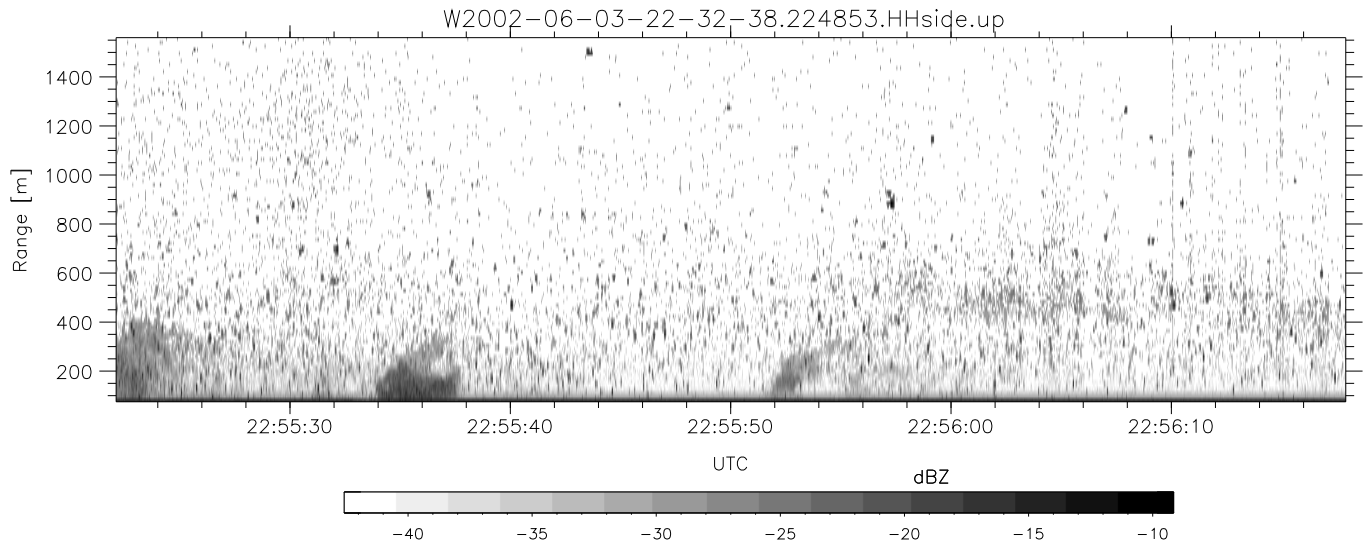
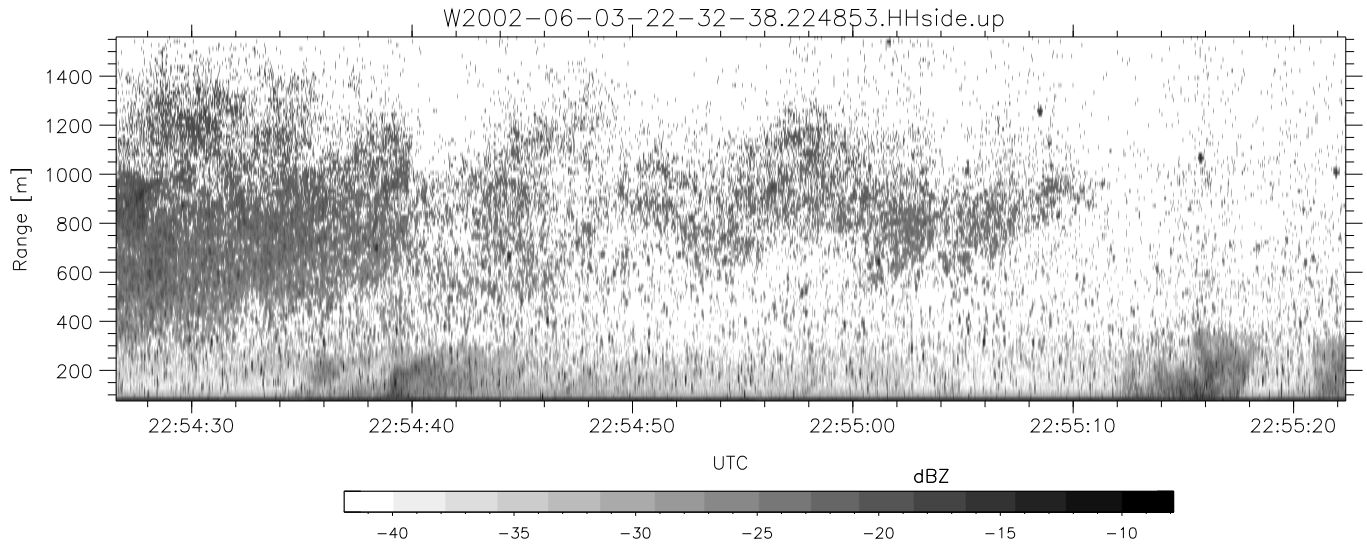
IHOP 2002 (dual-antenna config, modes 1,3,4,7) Data (cal: 49.0,50.0)

W2002-06-03-22-32-38 - PPMAG4	Min	Max	Mean	Std	Varc%
IRIG:1,UTC: 22:32:11.35 to 23:07:17.43, Dur: 2106s	-67.31	-63.74	-65.52	-75.55	9.9
TimeLngth: 2106.08s, TimeInt: 29ms (34.4pps)	-68.18	-63.18	-66.08	-75.58	11.2
TimeCor=-13.0s, DSPDif(mn,mx,min):28,28,293	-10.55	-6.14	-7.23	-15.83	13.8
PPS(min,max,std): 25,36,2.15	-33.68	-17.60	-26.62	-28.90	59.3
Prof: 1600 to 73980, NumProf(t/r): 72380/17069	ppN(m/s)	-12.90	12.75	0.02	4.21
ProcTime/Recs: 22:48:53-22:57:05/34138-51206	ppT(m/s)	-101.9	100.75	0.17	33.30
MxACQtime: 33ms; DRate: 192.4KB/s; Flags: 0, 0, 0	hh/vv(dB)	-NaN	49.52	11.53	29.62 6445
Pulse: 275ns, IFfilt: 5.0MHz; ppPol: HH HV VV	vh/hh(dB)	-NaN	-30.63	-34.93	-36.78 65.3
TxPol: HHVV, PRF: 20 10 20 10 kHz	hv/vv(dB)	-NaN	-31.83	-51.18	-46.77 276.
Range: Delay 75m, Spacing 15m, Gates 100	hn/jmp(dB)	-2.71	2.10	-0.07	-8.66 13.8
Ave. Pulses: 84, Rng/Prof Aspect@90m/s: 5.7	vn/jmp(dB)	-2.47	2.18	-0.09	-8.60 14.1



IHOP 2002 (dual-antenna config, modes 1,3,4,7) Data (cal: 49.0,50.0)

	Min	Max	Mean	Std	Varc%	
W2002-06-03-22-32-38 - PPMAG4						
IRIG:1,UTC: 22:32:11.35 to 23:07:17.43, Dur: 2106s	hhN (dB)	-67.31	-63.74	-65.52	-75.55	9.9
TimeLngth: 2106.08s, TimeInt: 29ms (34.4pps)	vvN (dB)	-68.18	-63.18	-66.08	-75.58	11.2
TimeCor=-13.0s, DSPDif(mn,mx,min):28,28,293	hhL (dB)	-10.55	-6.14	-7.23	-15.83	13.8
PPS(min,max,std): 25,36,2.15	vvL (dB)	-33.68	-17.60	-26.62	-28.90	59.3
Prof: 1600 to 73980, NumProf(t/r): 72380/17069	ppN (m/s)	-12.90	12.75	0.02	4.21	
ProcTime/Recs: 22:48:53-22:57:05/34138-51206	ppT (m/s)	-101.9	100.75	0.17	33.30	
MxACQtime: 33ms; DRate: 192.4KB/s; Flags: 0, 0, 0	hh/vv (dB)	-NaN	49.52	11.53	29.62	6445
Pulse: 275ns, IFilt: 5.0MHz; ppPol: HH HV VV	vh/hh (dB)	-NaN	-30.63	-34.93	-36.78	65.3
TxPol: HHVV, PRF: 20 10 20 10 kHz	hv/vv (dB)	-NaN	-31.83	-51.18	-46.77	276.
Range: Delay 75m, Spacing 15m, Gates 100	hn_jmp (dB)	-2.71	2.10	-0.07	-8.66	13.8
Ave. Pulses: 84, Rng/Prof Aspect@90m/s: 5.7	vn_jmp (dB)	-2.47	2.18	-0.09	-8.60	14.1



IHOP 2002 (dual-antenna config, modes 1,3,4,7) Data (cal: 49.0,50.0)

W2002-06-03-22-32-38 - PPMAG4	Min	Max	Mean	Std	Varc%
IRIG:1,UTC: 22:32:11.35 to 23:07:17.43, Dur: 2106s	-67.31	-63.74	-65.52	-75.55	9.9
TimeLngth: 2106.08s, TimeInt: 29ms (34.4pps)	-68.18	-63.18	-66.08	-75.58	11.2
TimeCor=-13.0s, DSPDif(mn,mx,min):28,28,293	-10.55	-6.14	-7.23	-15.83	13.8
PPS(min,max,std): 25,36,2.15	-33.68	-17.60	-26.62	-28.90	59.3
Prof: 1600 to 73980, NumProf(t/r): 72380/17069	ppN(m/s)	-12.90	12.75	0.02	4.21
ProcTime/Recs: 22:48:53-22:57:05/34138-51206	ppT(m/s)	-101.9	100.75	0.17	33.30
MxACQtime: 33ms; DRate: 192.4KB/s; Flags: 0, 0, 0	hh/vv(dB)	-NaN	49.52	11.53	29.62 6445
Pulse: 275ns, IFfilt: 5.0MHz; ppPol: HH HV VV	vh/hh(dB)	-NaN	-30.63	-34.93	-36.78 65.3
TxPol: HHVV, PRF: 20 10 20 10 kHz	hv/vv(dB)	-NaN	-31.83	-51.18	-46.77 276.
Range: Delay 75m, Spacing 15m, Gates 100	hnjmp(dB)	-2.71	2.10	-0.07	-8.66 13.8
Ave. Pulses: 84, Rng/Prof Aspect@90m/s: 5.7	vnjmp(dB)	-2.47	2.18	-0.09	-8.60 14.1