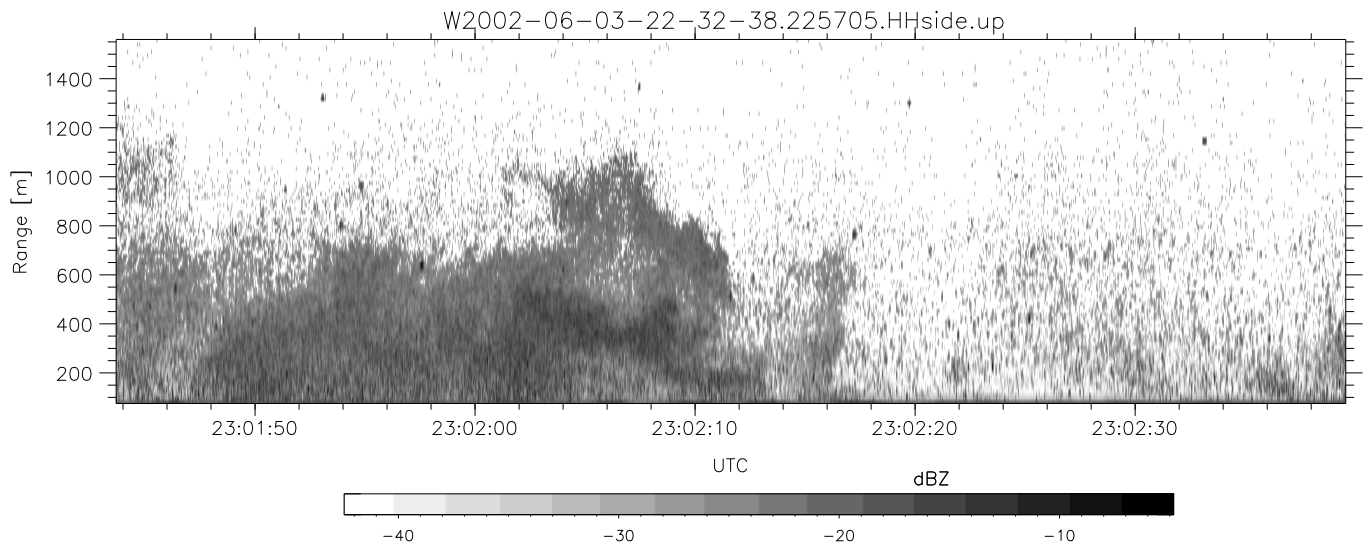
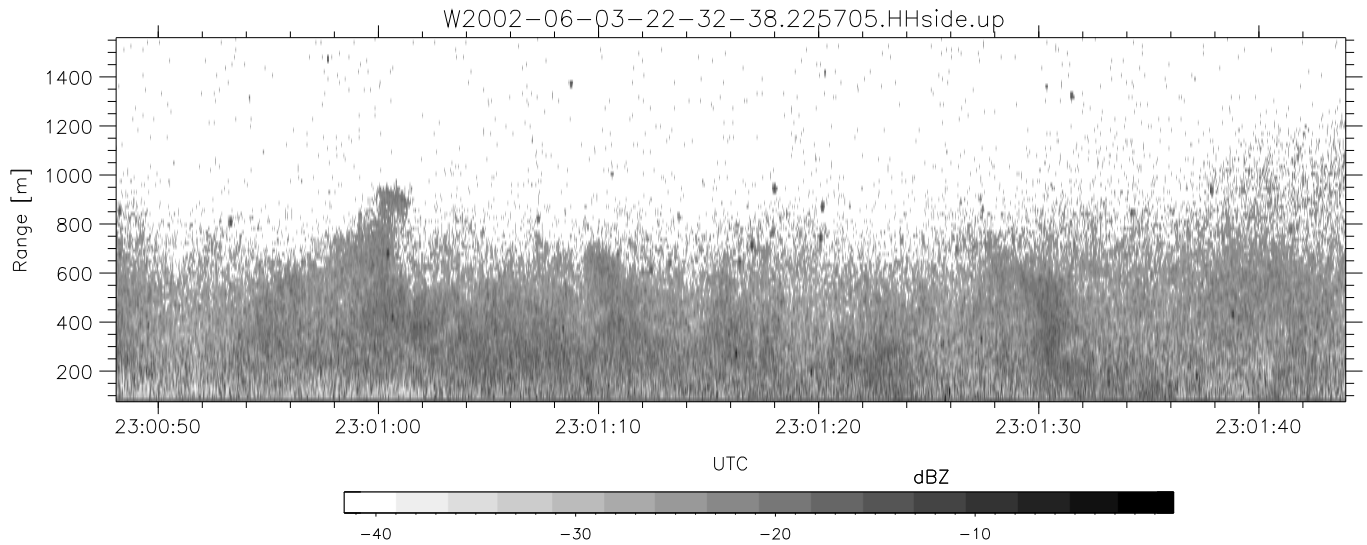
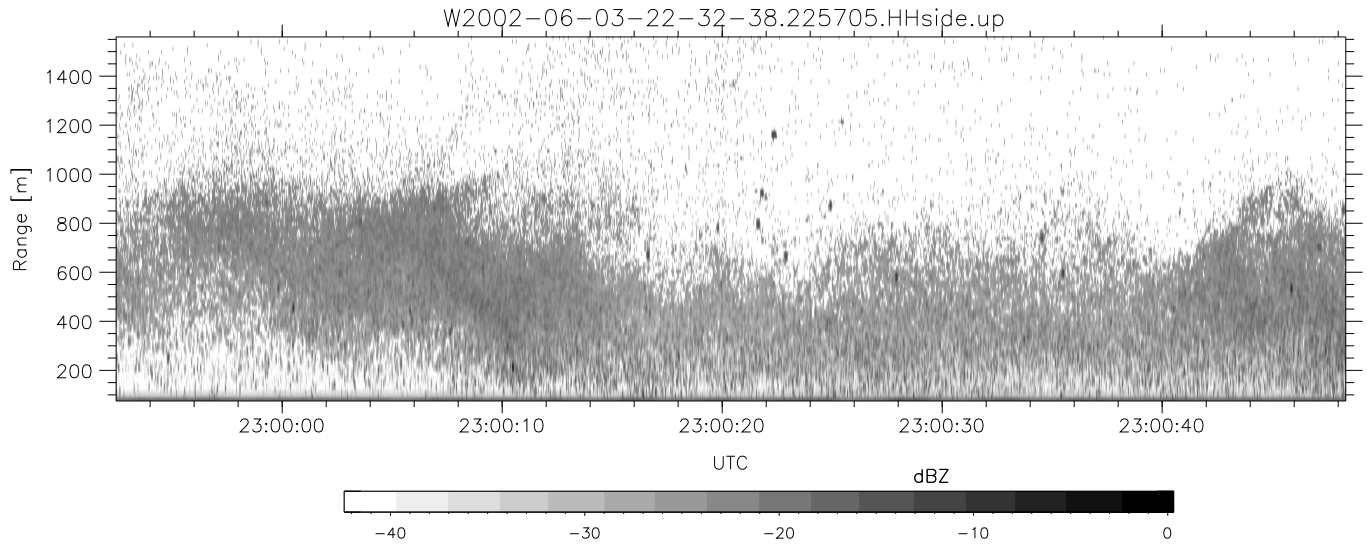


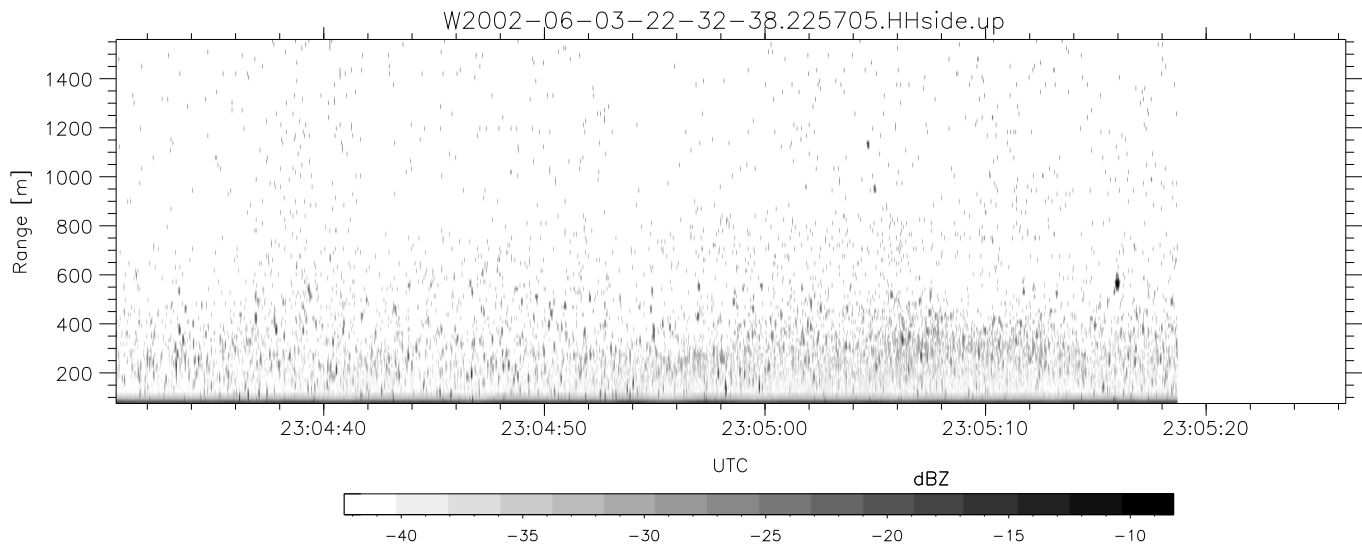
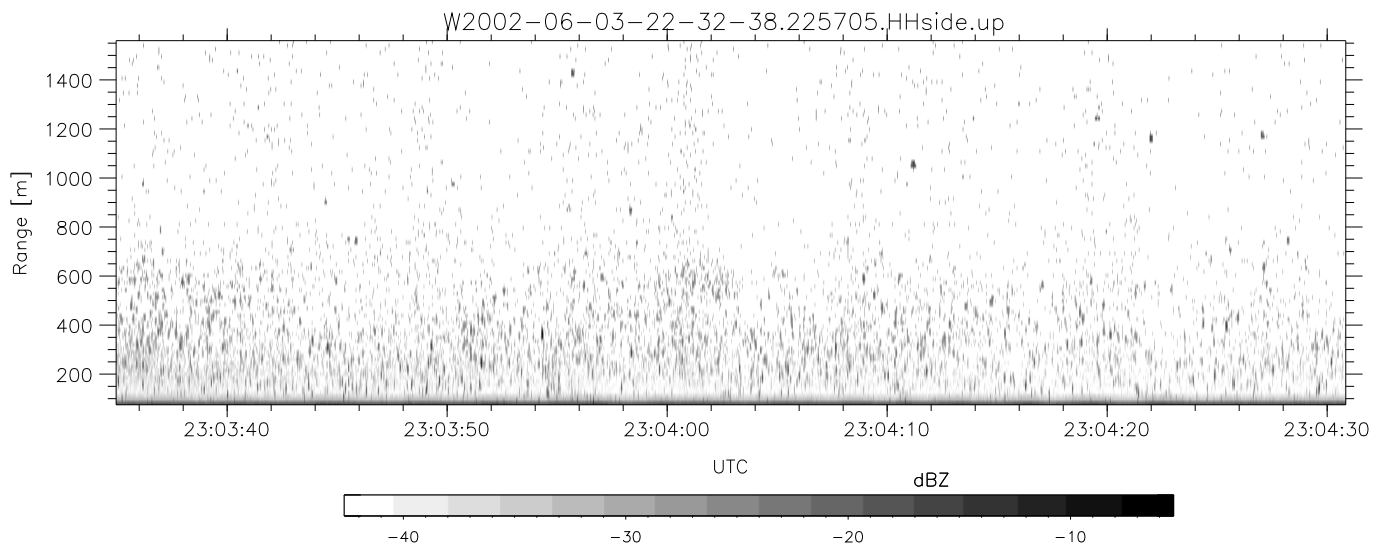
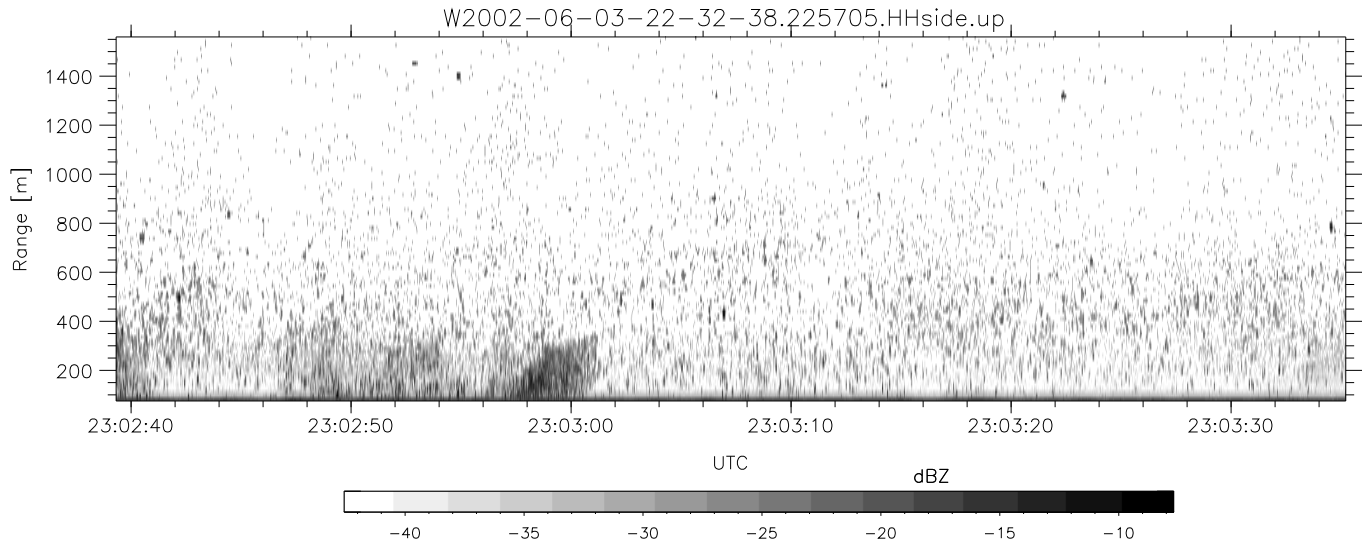
IHOP 2002 (dual-antenna config, modes 1,3,4,7) Data (cal: 49.0,50.0)

W2002-06-03-22-32-38 - PPMAG4	Min	Max	Mean	Std	Varc%
IRIG:1,UTC: 22:32:11.35 to 23:07:17.43, Dur: 2106s	-67.40	-64.04	-65.51	-75.56	9.9
TimeLngth: 2106.08s, TimeInt: 29ms (34.4pps)	-67.95	-64.44	-66.10	-76.12	10.0
TimeCor=-13.0s, DSPDif(mn,mx,min):28,28,310	-14.54	-5.02	-9.08	-14.88	26.3
PPS(min,max,std): 25,36,2.19	-25.38	-12.20	-14.92	-19.79	32.6
Prof: 1600 to 73980, NumProf(t/r): 72380/17069	ppN(m/s)	-12.49	12.83	-0.03	4.17
ProcTime/Recs: 22:57:05-23:05:18/51207-68275	ppT(m/s)	-98.64	101.33	-0.25	32.94
MxACQtime: 33ms; DRate: 192.4KB/s; Flags: 0, 0, 0	hh/vv(dB)	-NaN	51.14	14.76	31.13 4339
Pulse: 275ns, IFfilt: 5.0MHz; ppPol: HH HV VV	vh/hh(dB)	-NaN	-31.50	-36.49	-36.62 97.2
TxPol: HHV, PRF: 20 10 20 10 kHz	hv/vv(dB)	-NaN	-34.87	-52.15	-45.29 485.
Range: Delay 75m, Spacing 15m, Gates 100	hn_jmp(dB)	-1.94	2.50	0.17	-8.40 13.9
Ave. Pulses: 84, Rng/Prof Aspect@90m/s: 5.7	vn_jmp(dB)	-1.96	2.21	0.17	-8.33 14.1



IHOP 2002 (dual-antenna config, modes 1,3,4,7) Data (cal: 49.0,50.0)

W2002-06-03-22-32-38 - PPMAG4	Min	Max	Mean	Std	Varc%
IRIG:1,UTC: 22:32:11.35 to 23:07:17.43, Dur: 2106s	-67.40	-64.04	-65.51	-75.56	9.9
TimeLngth: 2106.08s, TimeInt: 29ms (34.4pps)	-67.95	-64.44	-66.10	-76.12	10.0
TimeCor=-13.0s, DSPDif(mn,mx,min):28,28,310	-14.54	-5.02	-9.08	-14.88	26.3
PPS(min,max,std): 25,36,2.19	-25.38	-12.20	-14.92	-19.79	32.6
Prof: 1600 to 73980, NumProf(t/r): 72380/17069	ppN(m/s)	-12.49	12.83	-0.03	4.17
ProcTime/Recs: 22:57:05-23:05:18/51207-68275	ppT(m/s)	-98.64	101.33	-0.25	32.94
MxACQtime: 33ms; DRate: 192.4KB/s; Flags: 0, 0, 0	hh/vv(dB)	-NaN	51.14	14.76	31.13 4339
Pulse: 275ns, IFfilt: 5.0MHz; ppPol: HH HV VV	vh/hh(dB)	-NaN	-31.50	-36.49	-36.62 97.2
TxPol: HHVV, PRF: 20 10 20 10 kHz	hv/vv(dB)	-NaN	-34.87	-52.15	-45.29 485.
Range: Delay 75m, Spacing 15m, Gates 100	hnjmp(dB)	-1.94	2.50	0.17	-8.40 13.9
Ave. Pulses: 84, Rng/Prof Aspect@90m/s: 5.7	vnjmp(dB)	-1.96	2.21	0.17	-8.33 14.1



IHOP 2002 (dual-antenna config, modes 1,3,4,7) Data (cal: 49.0,50.0)

	Min	Max	Mean	Std	Varc%	
W2002-06-03-22-32-38 - PPMAG4						
IRIG:1,UTC: 22:32:11.35 to 23:07:17.43, Dur: 2106s	hhN (dB)	-67.40	-64.04	-65.51	-75.56	9.9
TimeLngth: 2106.08s, TimeInt: 29ms (34.4pps)	vvN (dB)	-67.95	-64.44	-66.10	-76.12	10.0
TimeCor=-13.0s, DSPDif(mn,mx,min):28,28,310	hhL (dB)	-14.54	-5.02	-9.08	-14.88	26.3
PPS(min,max,std): 25,36,2.19	vvL (dB)	-25.38	-12.20	-14.92	-19.79	32.6
Prof: 1600 to 73980, NumProf(t/r): 72380/17069	ppN (m/s)	-12.49	12.83	-0.03	4.17	
ProcTime/Recs: 22:57:05-23:05:18/51207-68275	ppT (m/s)	-98.64	101.33	-0.25	32.94	
MxACQtime: 33ms; DRate: 192.4KB/s; Flags: 0, 0, 0	hh/vv (dB)	-NaN	51.14	14.76	31.13	4339
Pulse: 275ns, IFilt: 5.0MHz; ppPol: HH HV VV	vh/hh (dB)	-NaN	-31.50	-36.49	-36.62	97.2
TxPol: HHVV, PRF: 20 10 20 10 kHz	hv/vv (dB)	-NaN	-34.87	-52.15	-45.29	485.5
Range: Delay 75m, Spacing 15m, Gates 100	hn_jmp (dB)	-1.94	2.50	0.17	-8.40	13.9
Ave. Pulses: 84, Rng/Prof Aspect@90m/s: 5.7	vn_jmp (dB)	-1.96	2.21	0.17	-8.33	14.1