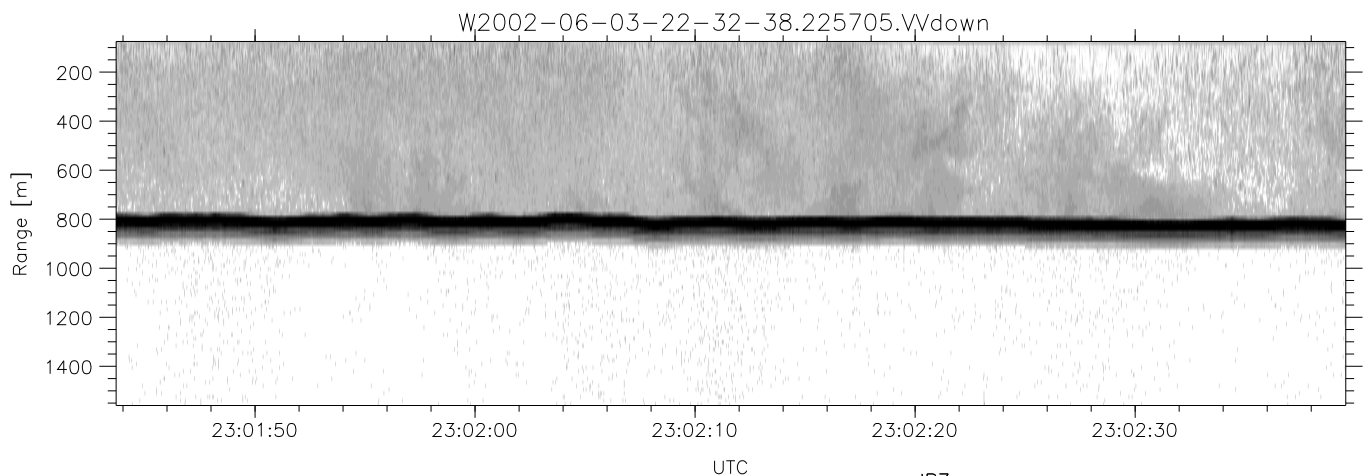
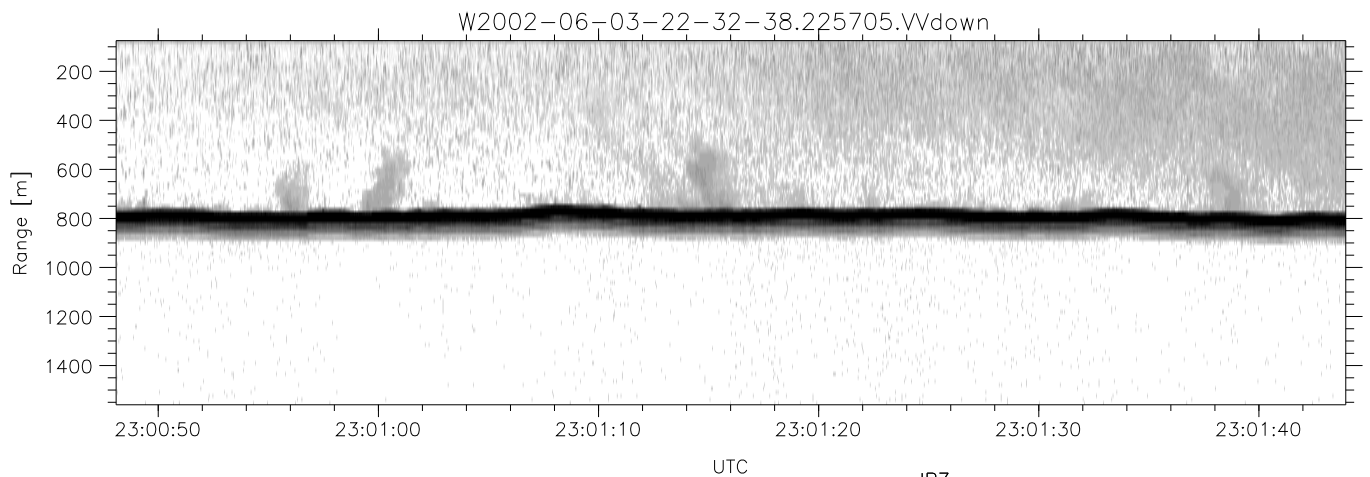
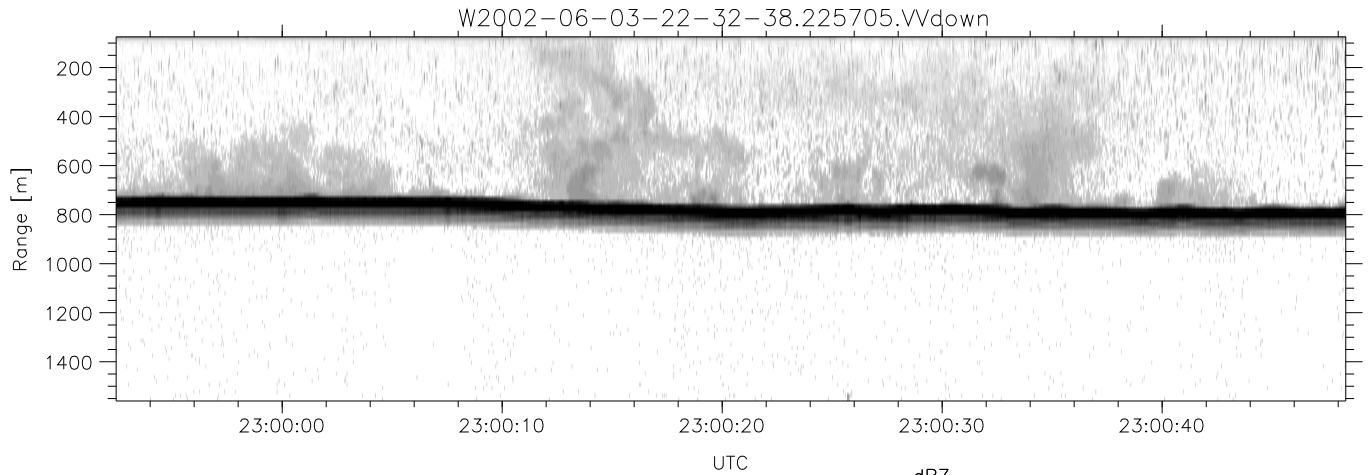


IHOP 2002 (dual-antenna config, modes 1,3,4,7) Data (cal: 49.0,50.0)

W2002-06-03-22-32-38 - PPMAG4  
 IRIG:1,UTC: 22:32:11.35 to 23:07:17.43, Dur: 2106s  
 TimeLngth: 2106.08s, TimeInt: 29ms (34.4pps)  
 TimeCor=-13.0s, DSPDif(mn,mx,min):28,28,310  
 PPS(min,max,std): 25,36,2.19  
 Prof: 1600 to 73980, NumProf(t/r): 72380/17069  
 ProcTime/Recs: 22:57:05-23:05:18/51207-68275  
 MxACQtime: 33ms; DRate: 192.4KB/s; Flags: 0, 0, 0  
 Pulse: 275ns, IFfilt: 5.0MHz; ppPol: HH HV VV  
 TxPol: HHVV, PRF: 20 10 20 10 kHz  
 Range: Delay 75m, Spacing 15m, Gates 100  
 Ave. Pulses: 84, Rng/Prof Aspect@90m/s: 5.7

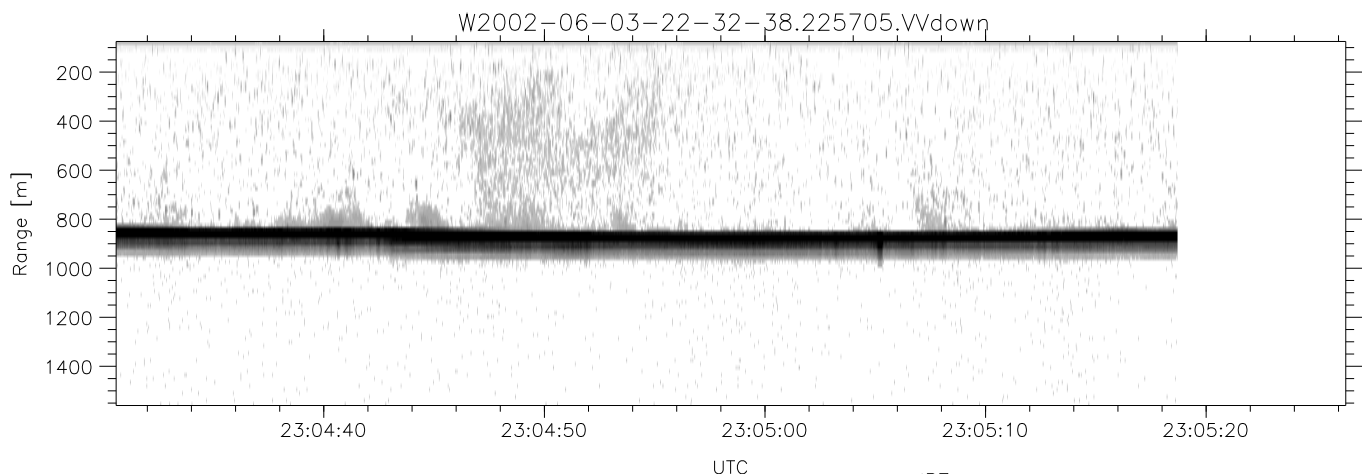
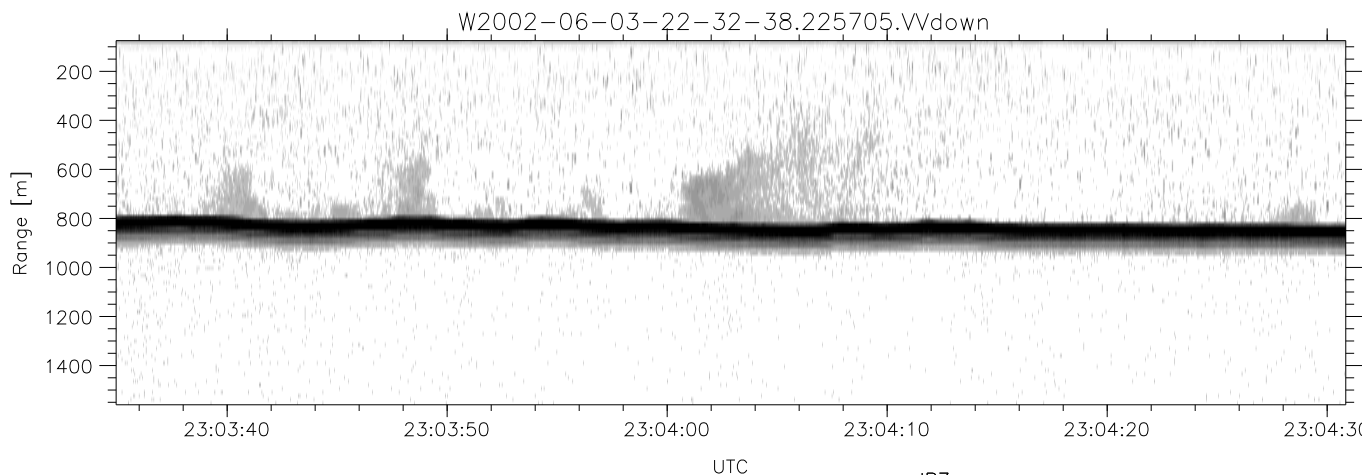
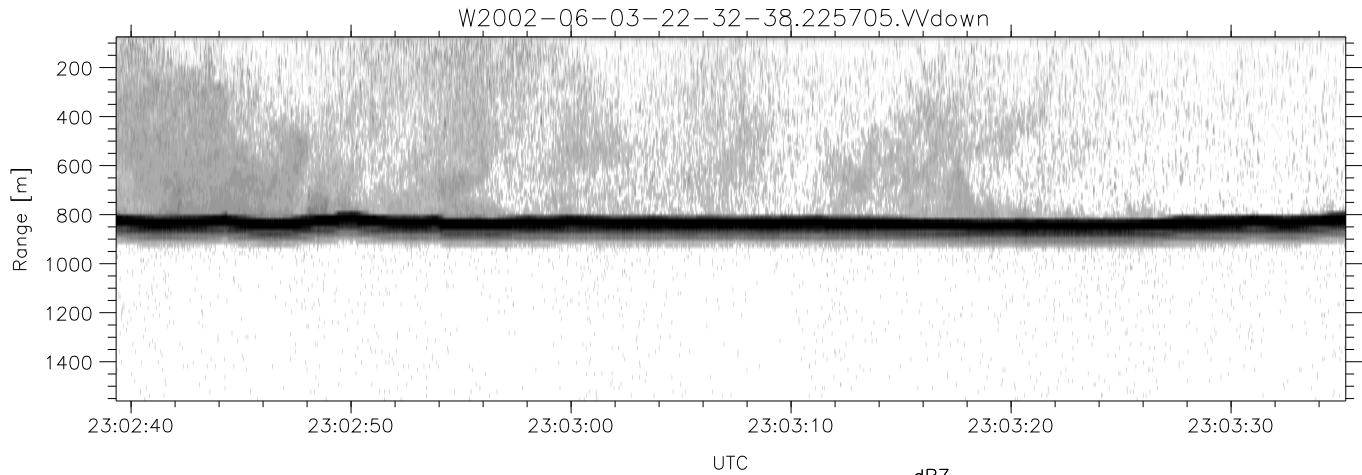
	Min	Max	Mean	Std	Varc%
hhN(dB)	-67.40	-64.04	-65.51	-75.56	9.9
vvN(dB)	-67.95	-64.44	-66.10	-76.12	10.0
hhL(dB)	-14.54	-5.02	-9.08	-14.88	26.3
vvL(dB)	-25.38	-12.20	-14.92	-19.79	32.6
ppN(m/s)	-12.49	12.83	-0.03	4.17	
ppT(m/s)	-98.64	101.33	-0.25	32.94	
hh/vv(dB)	-NaN	51.14	14.76	31.13	4339
vh/hh(dB)	-NaN	-31.50	-36.49	-36.62	97.2
hv/vv(dB)	-NaN	-34.87	-52.15	-45.29	485.
hnjmp(dB)	-1.94	2.50	0.17	-8.40	13.9
vnjmp(dB)	-1.96	2.21	0.17	-8.33	14.1



IHOP 2002 (dual-antenna config, modes 1,3,4,7) Data (cal: 49.0,50.0)

W2002-06-03-22-32-38 - PPMAG4  
 IRIG:1,UTC: 22:32:11.35 to 23:07:17.43, Dur: 2106s  
 TimeLngth: 2106.08s, TimeInt: 29ms (34.4pps)  
 TimeCor=-13.0s, DSPDif(mn,mx,min):28,28,310  
 PPS(min,max,std): 25,36,2.19  
 Prof: 1600 to 73980, NumProf(t/r): 72380/17069  
 ProcTime/Recs: 22:57:05-23:05:18/51207-68275  
 MxACQtime: 33ms; DRate: 192.4KB/s; Flags: 0, 0, 0  
 Pulse: 275ns, IFilt: 5.0MHz; ppPol: HH HV VV  
 TxPol: HHVV, PRF: 20 10 20 10 kHz  
 Range: Delay 75m, Spacing 15m, Gates 100  
 Ave. Pulses: 84, Rng/Prof Aspect@90m/s: 5.7

	Min	Max	Mean	Std	Varc%
hhN(dB)	-67.40	-64.04	-65.51	-75.56	9.9
vvN(dB)	-67.95	-64.44	-66.10	-76.12	10.0
hhL(dB)	-14.54	-5.02	-9.08	-14.88	26.3
vvL(dB)	-25.38	-12.20	-14.92	-19.79	32.6
ppN(m/s)	-12.49	12.83	-0.03	4.17	
ppT(m/s)	-98.64	101.33	-0.25	32.94	
hh/vv(dB)	-NaN	51.14	14.76	31.13	4339
vh/hh(dB)	-NaN	-31.50	-36.49	-36.62	97.2
hv/vv(dB)	-NaN	-34.87	-52.15	-45.29	485.5
hn_jmp(dB)	-1.94	2.50	0.17	-8.40	13.9
vn_jmp(dB)	-1.96	2.21	0.17	-8.33	14.1



IHOP 2002 (dual-antenna config, modes 1,3,4,7) Data (cal: 49.0,50.0)

W2002-06-03-22-32-38 - PPMAG4  
 IRIG:1,UTC: 22:32:11.35 to 23:07:17.43, Dur: 2106s  
 TimeLngth: 2106.08s, TimeInt: 29ms (34.4pps)  
 TimeCor=-13.0s, DSPDif(mn,mx,min):28,28,310  
 PPS(min,max,std): 25,36,2.19  
 Prof: 1600 to 73980, NumProf(t/r): 72380/17069  
 ProcTime/Recs: 22:57:05-23:05:18/51207-68275  
 MxACQtime: 33ms; DRate: 192.4KB/s; Flags: 0, 0, 0  
 Pulse: 275ns, IFfilt: 5.0MHz; ppPol: HH HV VV  
 TxPol: HHVV, PRF: 20 10 20 10 kHz  
 Range: Delay 75m, Spacing 15m, Gates 100  
 Ave. Pulses: 84, Rng/Prof Aspect@90m/s: 5.7

	Min	Max	Mean	Std	Varc%
hhN(dB)	-67.40	-64.04	-65.51	-75.56	9.9
vvN(dB)	-67.95	-64.44	-66.10	-76.12	10.0
hhL(dB)	-14.54	-5.02	-9.08	-14.88	26.3
vvL(dB)	-25.38	-12.20	-14.92	-19.79	32.6
ppN(m/s)	-12.49	12.83	-0.03	4.17	
ppT(m/s)	-98.64	101.33	-0.25	32.94	
hh/vv(dB)	-NaN	51.14	14.76	31.13	4339
vh/hh(dB)	-NaN	-31.50	-36.49	-36.62	97.2
hv/vv(dB)	-NaN	-34.87	-52.15	-45.29	485.
hnjmp(dB)	-1.94	2.50	0.17	-8.40	13.9
vnjmp(dB)	-1.96	2.21	0.17	-8.33	14.1